

Kathy Flynn Thurlow

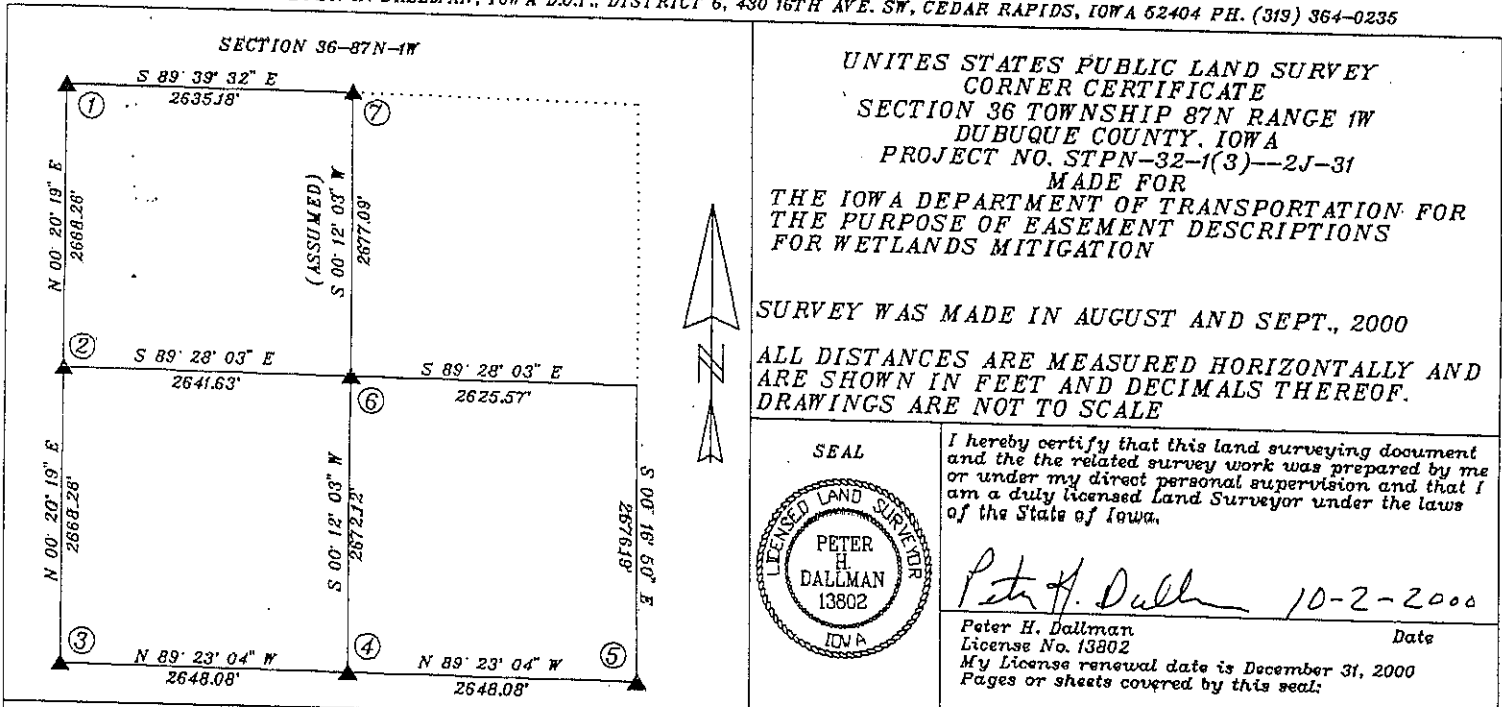
11521-00

2000 OCT -4 AM 8:53

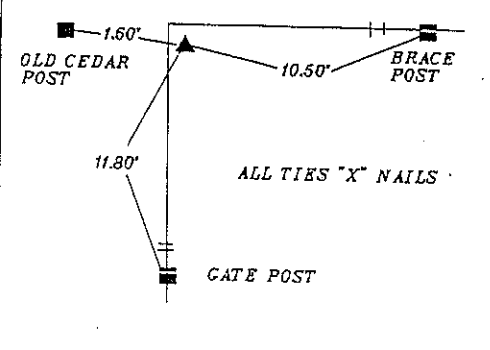
KATHY FLYNN THURLOW  
COUNTY RECORDER  
DUBUQUE CO., IOWA FEES

6.00

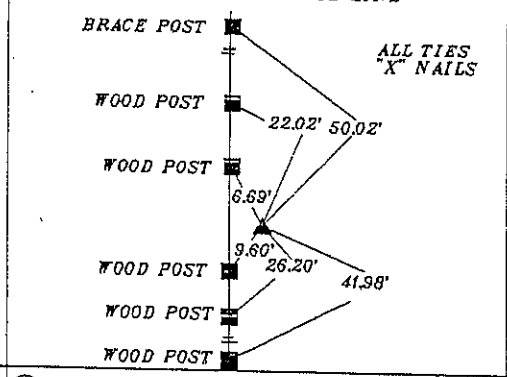
PREPARED BY: PETER H. DALLMAN, IOWA D.O.T., DISTRICT 6, 430 16TH AVE. SW, CEDAR RAPIDS, IOWA 52404 PH. (319) 364-0235



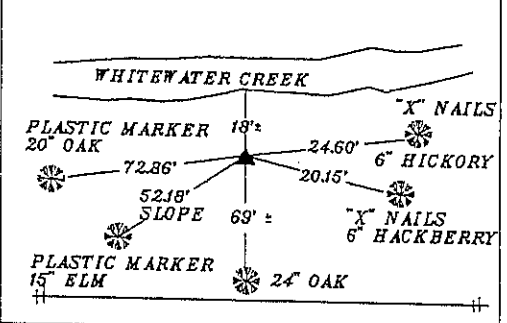
① NW CORNER SEC 36-87N-1W FOUND SCM 0.5' DEEP PREVIOUSLY CERTIFIED IN DOCUMENT #2039-94 (SECTION 25)



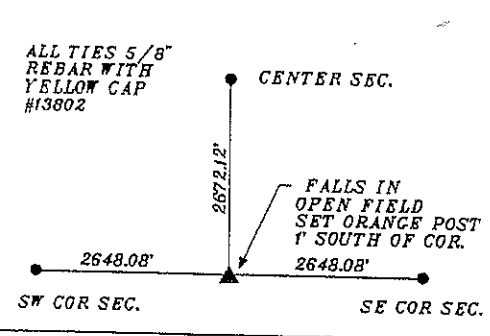
② N 1/4 CORNER OF SEC 36-87N-1W DUG 6' x 6' x 2' HOLE, FOUND NOTHING SET 5/8" REBAR WITH YELLOW CAP #13802 FLUSH BETWEEN NW CORNER AND SW CORNER AND FALLS APPROXIMATE N-S FENCE LINE



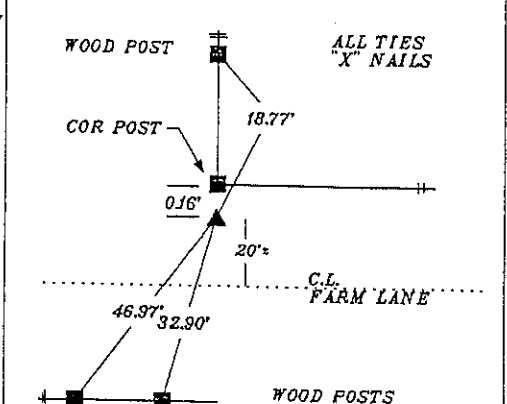
③ SW CORNER OF SEC 36-87N-1W DUG 3' x 3' x 2.5' HOLE FOUND NOTHING SET 5/8" REBAR WITH YELLOW CAP #13802 FLUSH AT DOUBLE THE DISTANCE BETWEEN THE SW 1/4 CORNER AND SE CORNER AND 16 CHAINS SOUTH OF NORTH BANK OF CREEK (ORIGINAL GOVERNMENT NOTES)



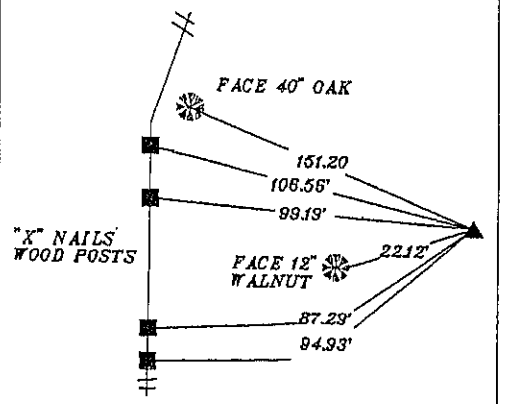
④ SW 1/4 CORNER SECTION 36-87N-1W DUG 6' x 6' x 2.5' HOLE, FOUND NOTHING SET 5/8" REBAR 3' DEEP WITH ANOTHER 5/8" REBAR OVER WITH YELLOW CAP #13802 3' DEEP, FOUND EVIDENCE OF BURIED N-S FENCE (METAL) FOR EAST WEST DIRECTION AND LINE BETWEEN SW AND SE CORNERS FOR N-S DIRECTION



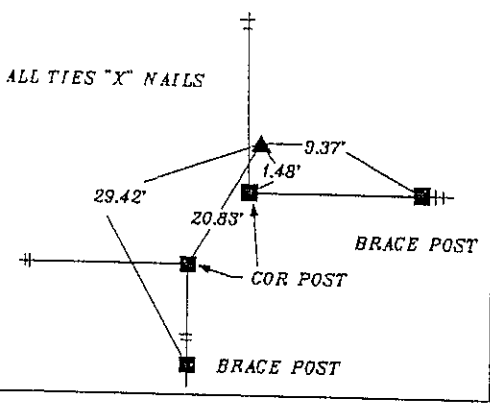
⑤ SE CORNER SECTION 36-87N-1W DUG 6' x 6' x 3' HOLE BY CORNER POST, SET 5/8" REBAR WITH YELLOW CAP #13802 AT CORNER POST, EXPOSED 1'



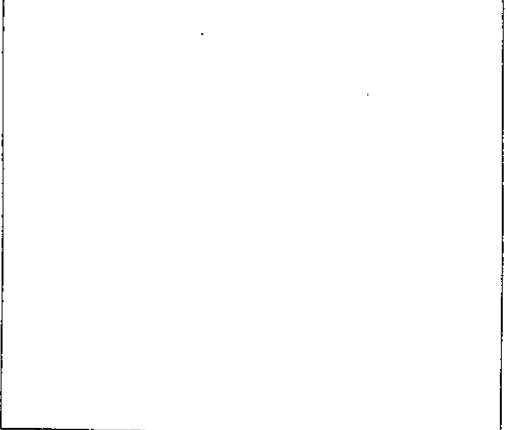
⑥ CENTER OF SECTION 36-87N-1W SET 5/8" REBAR WITH YELLOW CAP #13802 AT INTERSECTION OF 1/4 CORNERS



⑦ N 1/4 CORNER SEC 36-87N-1W FOUND SCM EXPOSED 1' PREVIOUSLY CERTIFIED IN DOCUMENT #2039-94 (SECTION 25)



⑧



⑨

