

2005 0055

FILED
RECORDERS OFFICE
JONES COUNTY IOWA

I

05 JAN -5 AM 9:53

MARIE KRUTZFIELD 7.00 pd

PREPARED BY: MICHAEL J. WEBER, WEBER SURVEYNG, 2829 15TH AVE, BERNARD, IA 52032, PH: (563) 879-3586

UNITED STATES PUBLIC LAND SURVEY CORNER CERTIFICATE OF

LAND SURVEY MONUMENTS SITUATED IN SECTION 20, TOWNSHIP 86 NORTH, RANGE 1 WEST
OF THE FIFTH PRINCIPAL MERIDIAN, JONES COUNTY, IOWA.
PREVIOUSLY RECORDED BOOK 331 PAGE 167 & 168
(book, page, document number, etc.)

(Show reason for preparing this certificate, the evidence and detailed procedures used in establishing the corner positions and monumentation found or placed.)

Monument Description and Remarks:

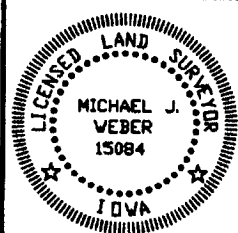
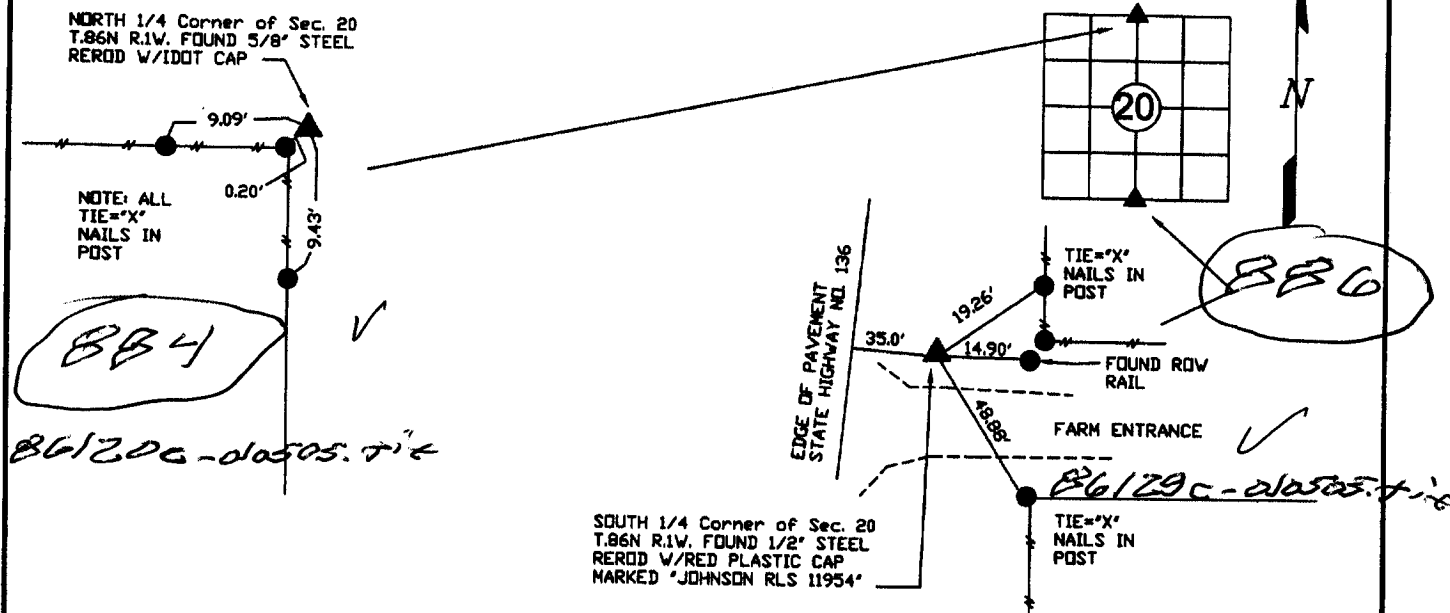
Reason: Plat of Survey of Parcel 2005-05 in Section 20 was prepared showing the corners identified below.

North 1/4 Corner of Sec. 20 found 5/8" steel rerod w/IDOT cap previously recorded in Book 331 Page 167. Old ties missing set, set new ties.

South 1/4 Corner of Sec. 20 found 1/2" steel rerod w/Red Plastic marked 'JOHNSON RLS 11954' previously recorded in Book 331 Page 168. Old ties found and tie dimensions updated.

PLAN - VIEW

(Show a minimum of three reference ties to durable physical objects, relevant monuments and physical conditions that will enable recovery of the corner.)



I HEREBY CERTIFY THAT THIS LAND SURVEYING DOCUMENT WAS PREPARED AND THE RELATED SURVEY WORK WAS PERFORMED BY ME OR UNDER MY DIRECT PERSONAL SUPERVISION AND THAT I AM A DULY LICENSED LAND SURVEYOR UNDER THE LAWS OF THE STATE OF IOWA.

Michael J. Weber
MICHAEL J. WEBER (DATE) 5 January 2005
LICENSE NUMBER 15084
MY LICENSE RENEWAL DATE IS DECEMBER 31, 2005

SHEETS COVERED BY THIS SEAL: 1

List Corners to be Indexed		
Corner	Sec	Twp Range
NORTH 1/4 CORNER	20	86N 1W
SOUTH 1/4 CORNER	20	86N 1W

SECTION CORNER CERTIFICATE

OF
 LAND SURVEY MONUMENTS SITUATED IN SECTION 20, TOWNSHIP 86 NORTH,
 RANGE 1 WEST, OF THE FIFTH PRINCIPAL MERIDIAN, JONES, COUNTY, IOWA.

PREVIOUSLY RECORDED IN BOOK _____ AT PAGE _____.

FOR RECORDER'S USE

REASON FOR PREPARING CERTIFICATE:

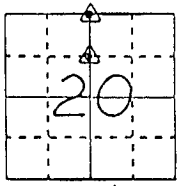
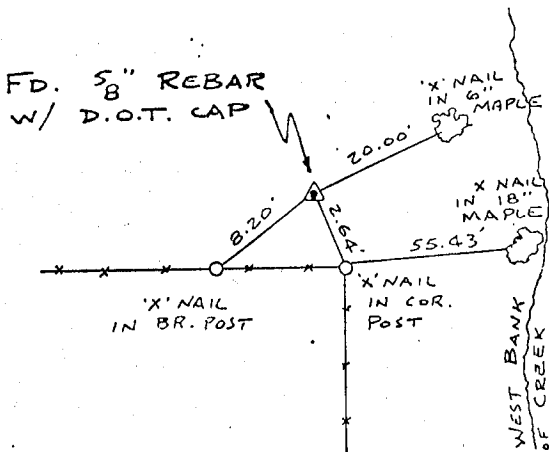
- A) THERE IS NO CERTIFICATE FOR THE CORNER ON FILE WITH THE RECORDER OF THE COUNTY IN WHICH THE CORNER IS LOCATED.
- B) CORNER POSITION DIFFERS FROM THAT SHOWN IN THE PUBLIC RECORDS OF THE COUNTY IN WHICH THE CORNER IS LOCATED.
- C) THE CORNER MONUMENT HAS BEEN REPLACED OR MODIFIED.
- D) THE REFERENCE TIES REFERRED TO IN AN EXISTING PUBLIC RECORD ARE INCORRECT.

MONUMENT DESCRIPTION AND REMARKS:

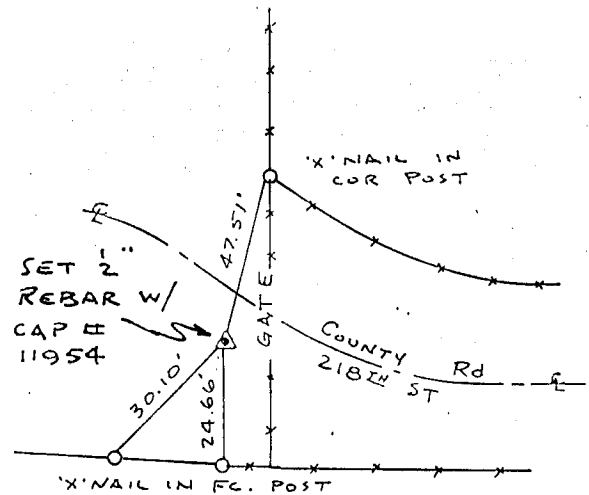
N 1/4 CORNER SECTION 20-T86N-R1W FOUND 5/8" REBAR W/ D.O.T
 CAP 2" ABOVE GROUND 68 1/2' WEST OF WEST CREEK BANK
 S.E. CORNER - N.E. 1/4 - N.W. 1/4 SECTION 20-T86N-R1W SET 1/2" REBAR
 W/ L.S. CAP # 11954 2" DEEP 3' SOUTH OF E OF COUNTY RD.

RECOVERY TIE DRAWING

N 1/4 COR. 20-86-1



S.E. COR. - N.E. 1/4 - N.W. 1/4 20-86-1



NOT TO SCALE

Z-25-93

Z-25-93 ON CARD M.S.

I, DANIEL J. JOHNSON, CERTIFY THAT THE CORNER LOCATION(S) SHOWN ON THIS RECORD WERE DETERMINED BY ME OR UNDER MY DIRECTION AND CONTROL AND THAT THIS U.S. PUBLIC LAND SURVEY MONUMENT RECORD IS CORRECT AND COMPLETE TO THE BEST OF MY KNOWLEDGE AND BELIEF.



Daniel J. Johnson 12-30-92
 DANIEL J. JOHNSON L.S. NO 11954 DATE

<p>LEGEND</p> <ul style="list-style-type: none"> ▲ GOVERNMENT CORNER ○ 5/8" THE PIN SET — CENTERLINE - - - EXISTING FORCE LINE - - - R.O.W. LINE 	<p>SHEET _____</p> <p>U.S. PUBLIC LAND SURVEY RECORD</p> <p>PROJECT _____</p> <p>TITLE JOSEPH STRANG JR. SURVEY</p>	<p>HALL AND HALL ENGINEERS, INC.</p> <p>226 29TH STREET DRIVE S.E. CEDAR RAPIDS, IOWA 52403 319-362-9548</p>
<p>D W N R.W.B.</p> <p>C H K D.T.J.</p> <p>A P P</p>	<p>D A T E 4-20-92</p> <p>S C A L E NONE</p>	<p>P N O B OT 25</p> <p>P N O P R O J 4671</p>