

SECTION CORNER CERTIFICATE

OF
 LAND SURVEY MONUMENTS SITUATED IN SECTION 20, TOWNSHIP 86 NORTH,
 RANGE 1 WEST, OF THE FIFTH PRINCIPAL MERIDIAN, JONES, COUNTY, IOWA.

PREVIOUSLY RECORDED IN BOOK _____ AT PAGE _____.

FOR RECORDER'S USE

REASON FOR PREPARING CERTIFICATE:

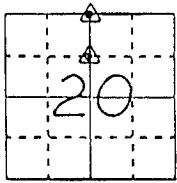
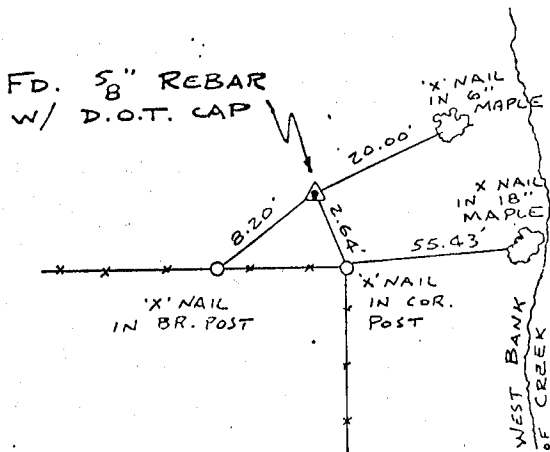
- A) THERE IS NO CERTIFICATE FOR THE CORNER ON FILE WITH THE RECORDER OF THE COUNTY IN WHICH THE CORNER IS LOCATED.
- B) CORNER POSITION DIFFERS FROM THAT SHOWN IN THE PUBLIC RECORDS OF THE COUNTY IN WHICH THE CORNER IS LOCATED.
- C) THE CORNER MONUMENT HAS BEEN REPLACED OR MODIFIED.
- D) THE REFERENCE TIES REFERRED TO IN AN EXISTING PUBLIC RECORD ARE INCORRECT.

MONUMENT DESCRIPTION AND REMARKS:

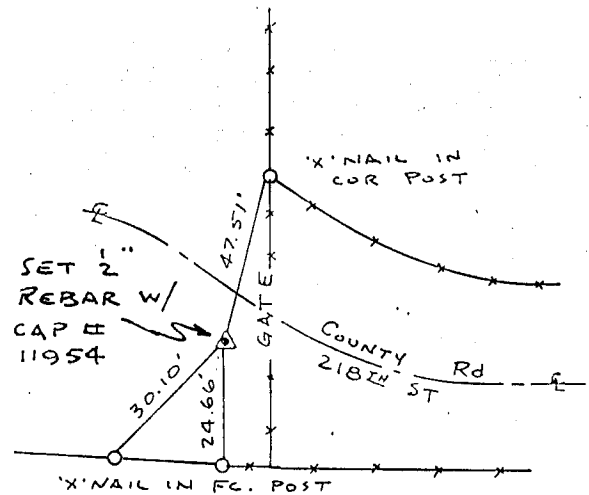
N 1/4 CORNER SECTION 20-T86N-R1W FOUND 5/8" REBAR W/ D.O.T
 CAP 2" ABOVE GROUND 68 1/2' WEST OF WEST CREEK BANK
 S.E. CORNER - N.E. 1/4 - N.W. 1/4 SECTION 20-T86N-R1W SET 1/2" REBAR
 W/ L.S. CAP # 11954 2" DEEP 3' SOUTH OF E OF COUNTY RD.

RECOVERY TIE DRAWING

N 1/4 COR. 20-86-1



S.E. COR. - N.E. 1/4 - N.W. 1/4 20-86-1



Z-25-93

ON CARD M.S.

Z-25-93 ON CARD M.S.

I, DANIEL J. JOHNSON, CERTIFY THAT THE CORNER LOCATION(S) SHOWN ON THIS RECORD WERE DETERMINED BY ME OR UNDER MY DIRECTION AND CONTROL AND THAT THIS U.S. PUBLIC LAND SURVEY MONUMENT RECORD IS CORRECT AND COMPLETE TO THE BEST OF MY KNOWLEDGE AND BELIEF.



Daniel J. Johnson 12-30-92
 DANIEL J. JOHNSON L.S. NO 11954 DATE

<p>LEGEND</p> <ul style="list-style-type: none"> ▲ GOVERNMENT CORNER ○ 5/8" THE PIN SET — CENTERLINE - - - EXISTING FORCE LINE - - - R.O.W. LINE 	<p>SHEET _____</p> <p>U.S. PUBLIC LAND SURVEY RECORD</p> <p>PROJECT _____</p> <p>TITLE: JOSEPH STRANG JR. SURVEY</p>	<p>HALL AND HALL ENGINEERS, INC.</p> <p>226 29TH STREET DRIVE S.E. CEDAR RAPIDS, IOWA 52403 319-362-9548</p>
<p>D W N R.W.B.</p>	<p>C H K D.T.J.</p>	<p>A P P</p>
<p>D A T E 4-20-92</p>	<p>S C A L E NONE</p>	<p>P N O B OT 25</p> <p>P N O P R O J 4671</p>