

2003 5543

FILED
RECORDERS OFFICE
JONES COUNTY IOWA

03 NOV 18 AM 10:38

MARIE KRUTZFIELD
RECORDER 11.00 pd

IIW ENGINEERS & SURVEYORS, P.C., 4155 PENNSYLVANIA AVE., DUBUQUE, IOWA, 563.556.2464

UNITED STATES PUBLIC LAND SURVEY CORNER CERTIFICATE OF

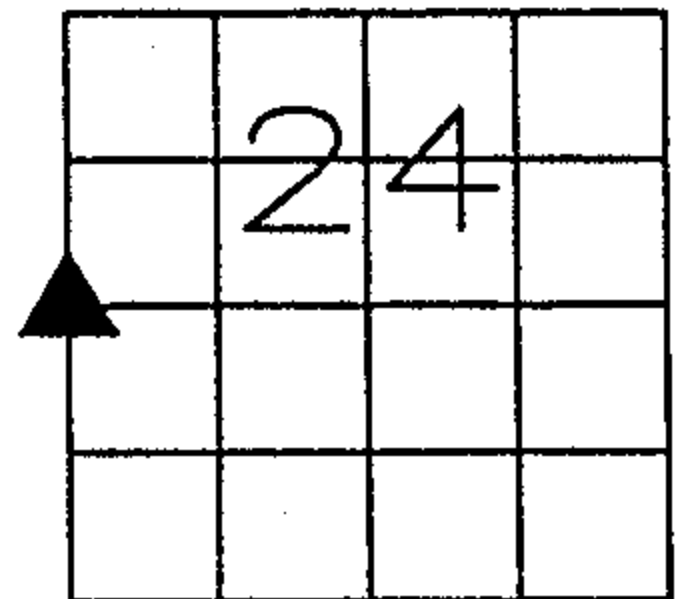
LAND SURVEY MONUMENTS SITUATED IN SECTION 24, TOWNSHIP 86 NORTH, RANGE 1 WEST
OF THE FIFTH PRINCIPAL MERIDIAN, JONES COUNTY, IOWA.
PREVIOUSLY RECORDED IN N/A IN COUNTY RECORDER'S OFFICE.

MONUMENT DESCRIPTION AND REMARKS:

W 1/4 CORNER, SECTION 24, T86N, R1W - FOUND "X" CUT IN LIMESTONE ALONGSIDE IRON ROD

PLAN - VIEW

E 1/4 - 23-86-1



WOODS



NO SCALE

LOGGING ROAD



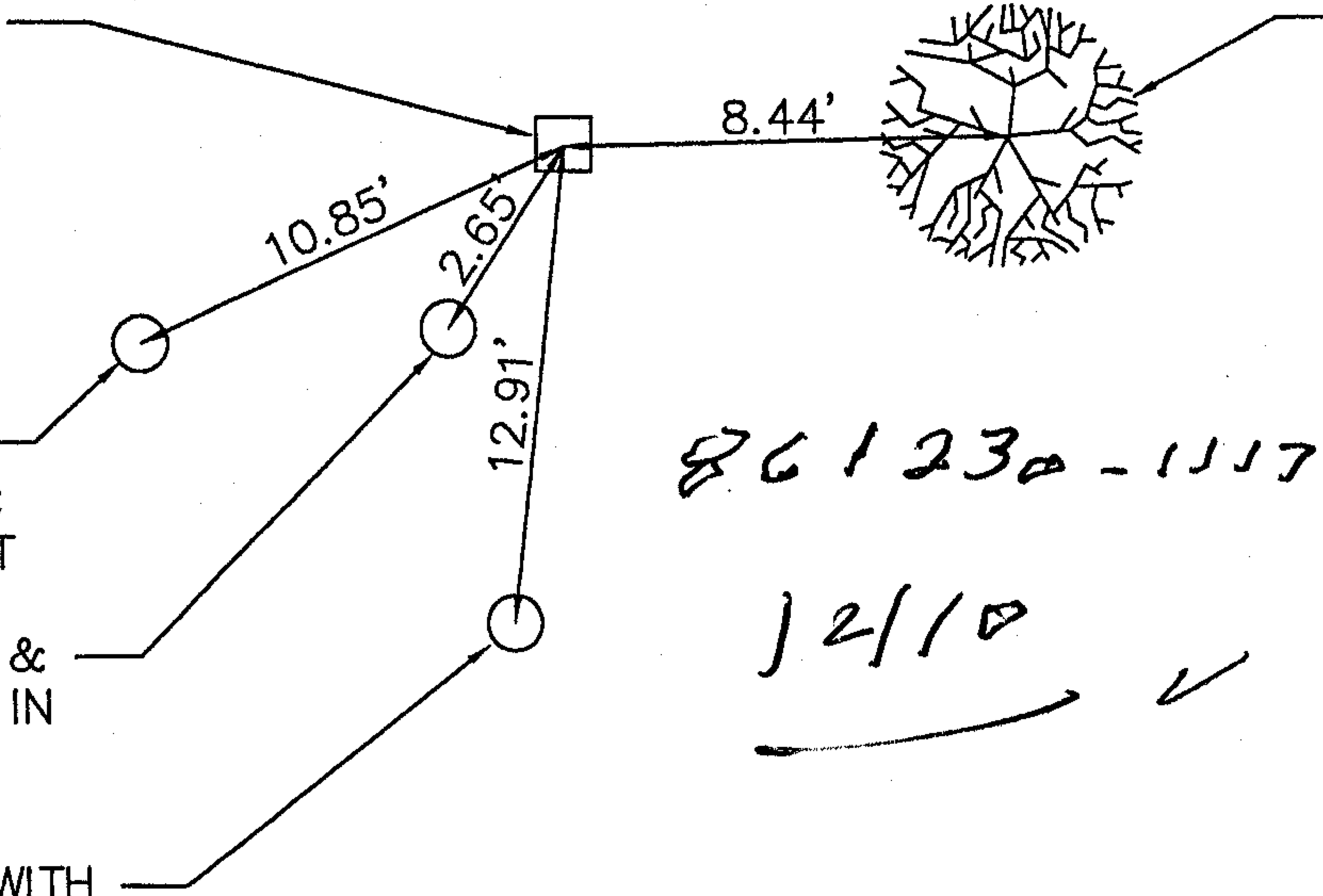
FOUND "X" CUT
IN LIMESTONE
ALONGSIDE IRON
ROD

SET MAG NAIL &
PLASTIC DISC IN
SIDE OF 10" TREE

SET MAG NAIL
W/PLASTIC DISC
IN TOP OF POST

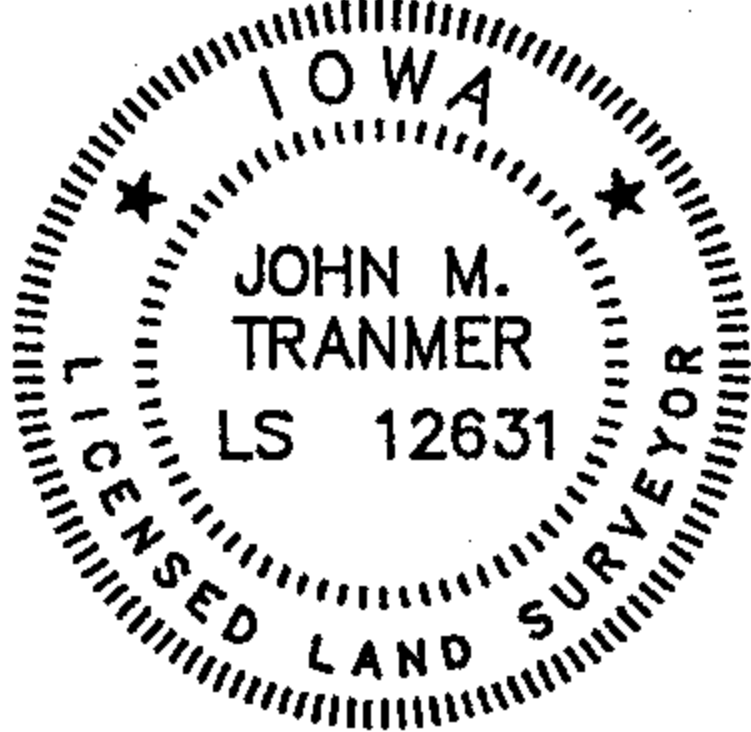
FND. MAG NAIL &
METAL WASHER IN
SIDE OF POST

SET MAG NAIL WITH
PLASTIC DISC IN
SIDE OF POST



861230-111703

12/10



I HEREBY CERTIFY THAT THIS LAND SURVEYING DOCUMENT WAS PREPARED AND THE RELATED SURVEY WORK WAS PERFORMED BY ME OR UNDER MY DIRECT PERSONAL SUPERVISION AND THAT I AM A DULY LICENSED LAND SURVEYOR UNDER THE LAWS OF THE STATE OF IOWA.

FOR IIW ENGINEERS AND SURVEYORS, P.C.

John M. Tranmer 11-17-03
JOHN M. TRANMER DATE

LICENSE NO. 12631 MY LICENSE RENEWAL DATE IS 12/31/2004

LIST CORNERS TO BE INDEXED

CORNERS	SECTION	TWP	RANGE
W 1/4	24	T86N	R1W



IIW ENGINEERS &
SURVEYORS, P.C.

DUBUQUE, IOWA

HAZEL GREEN, WISCONSIN

4155 PENNSYLVANIA AVE. DUBUQUE, IA 52002 (563) 556-2464

MONUMENT RECORD

COUNTY: JONES
TOWNSHIP: WASHINGTON

DATE: 11-17-03
REVISED:

FIELD BOOK NO. 362

PROJ. NO. 03757

INDEX NO.