

2005 4156

FILED
RECORDERS OFFICE
JONES COUNTY IOWA

05 NOV 17 AM 9:05

MARIE KRUTZFIELD
RECORDER No Fee

WASHINGTON

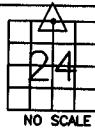
J.D. TJEPKES, LS. JONES COUNTY ENGINEER'S OFFICE, 19501 HWY. 64, ANAMOSA, IOWA, 52205 (319)462-3785

UNITED STATES PUBLIC LAND SURVEY CORNER CERTIFICATE

LAND SURVEY MONUMENTS SITUATED IN SECTION 24, TOWNSHIP 86
NORTH, RANGE 1 WEST OF THE 5TH P.M., JONES COUNTY, IOWA

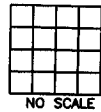
CORNERS TO BE INDEXED

CORNER SECTION TOWNSHIP RANGE
N1/4 24 86N 1W
OFFICE FILE NO.
86124c_111605.tif

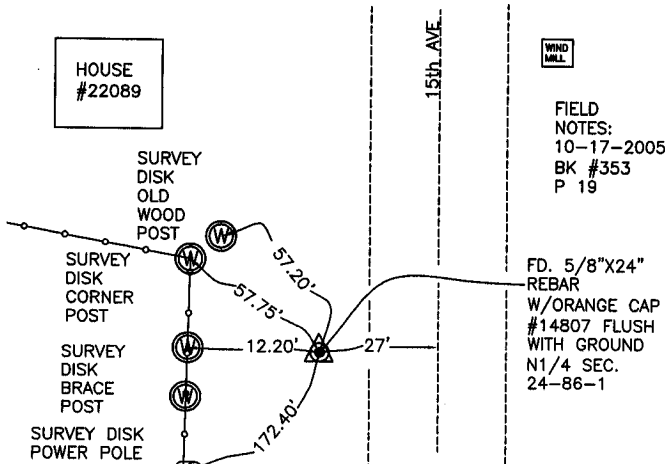


CORNERS TO BE INDEXED

CORNER SECTION TOWNSHIP RANGE
OFFICE FILE NO.



HOUSE
#22089



WIND
MILE

FIELD
NOTES:
10-17-2005
BK #353
P 19

FD. 5/8"X24"
REBAR
W/ORANGE CAP
#14807 FLUSH
WITH GROUND
N1/4 SEC.
24-86-1

PREVIOUSLY RECORDED IN BOOK 2001, PAGE 2741
MONUMENT DESCRIPTION AND HOW ESTABLISHED _____

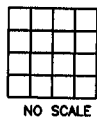
PREVIOUSLY RECORDED IN BOOK _____, PAGE _____
MONUMENT DESCRIPTION AND HOW ESTABLISHED _____

REPLACED TIES AFTER GRADING. TIES AS INDICATED FOR N1/4
CORNER SECTION 24 T86N R1W.

vv 967

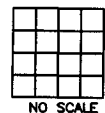
CORNERS TO BE INDEXED

CORNER SECTION TOWNSHIP RANGE
OFFICE FILE NO.



CORNERS TO BE INDEXED

CORNER SECTION TOWNSHIP RANGE
OFFICE FILE NO.



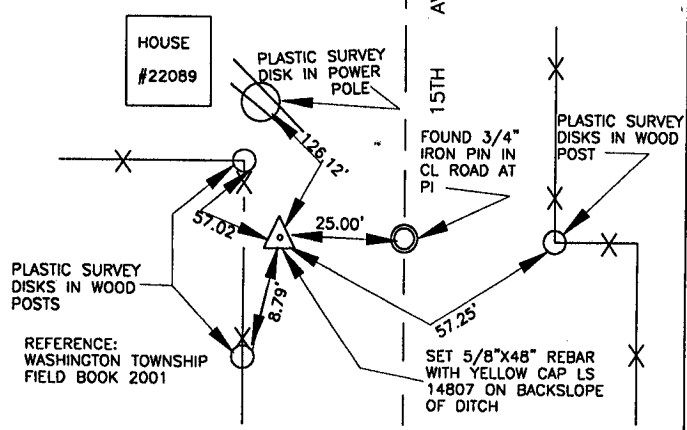
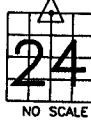
J.D. TJEPKES, LS. JONES COUNTY ENGINEER'S OFFICE, 19501 HWY. 64, ANAMOSA, IOWA, 52205 (319)462-3785

UNITED STATES PUBLIC LAND SURVEY CORNER CERTIFICATE

LAND SURVEY MONUMENTS SITUATED IN SECTION 24, TOWNSHIP 86
 NORTH, RANGE 1 WEST OF THE 5TH P.M., JONES COUNTY, IOWA

967 CORNERS TO BE INDEXED

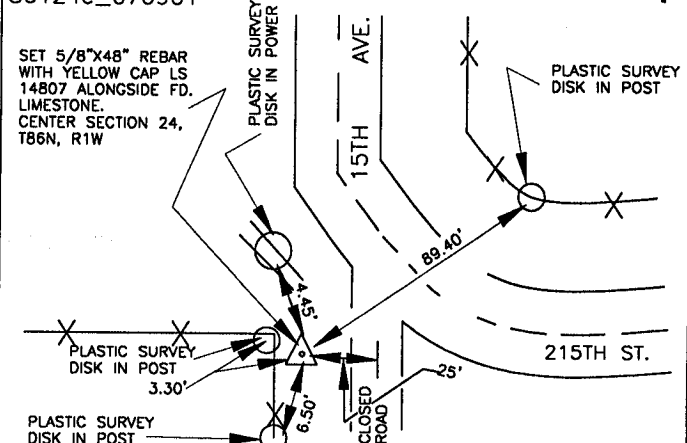
CORNER N-1/4 SECTION 24 TOWNSHIP 86N RANGE 1W
 OFFICE FILE NO. 86124c_070901



PREVIOUSLY RECORDED IN BOOK N/A, PAGE N/A
 MONUMENT DESCRIPTION AND HOW ESTABLISHED SET 5/8"x48" REBAR WITH YELLOW CAP LS 14807-25' WEST OF FOUND 3/4" REBAR AT A PI IN CENTER OF COUNTY ROAD (15TH AVE.)-AND ON NORTH LINE SECTION EXTENDED WEST. ORIGINAL ROAD RECORD CALLED FOR ROAD TO BE 25' EAST OF CENTERLINE SECTION. A FOUND STONE AT CENTER OF SECTION 24 BEARS THIS OUT. SET REFERENCE POINTS AND TIED OUT AS INDICATED. NORTH QUARTER CORNER SECTION 24, T86N, R1W, 5TH PRINCIPAL MERIDIAN, JONES COUNTY, IOWA

968 CORNERS TO BE INDEXED

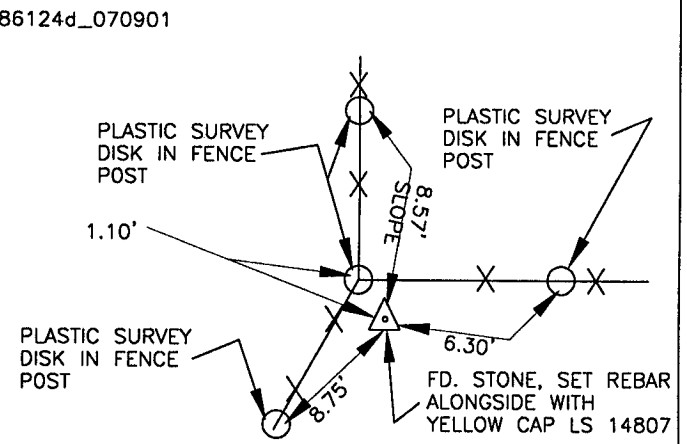
CORNER CENTER SECTION 24 TOWNSHIP 86N RANGE 1W
 OFFICE FILE NO. 86124c_070901



PREVIOUSLY RECORDED IN BOOK N/A, PAGE N/A
 MONUMENT DESCRIPTION AND HOW ESTABLISHED FOUND 8"x12"x5" LIMESTONE AT COR. FENCES WEST-SOUTH. SET 5/8"x48" REBAR WITH YELLOW CAP LS 14807 ALONGSIDE. SET REFERENCE POINTS AND TIED OUT AS INDICATED. STONE WAS FOUND TO BE 25' WEST OF THE CENTERLINE OF COUNTY ROAD (15TH AVE.) AS INDICATED BY THE ORIGINAL ROAD RECORD. CENTER SECTION 24, T86N, R1W, 5TH PRINCIPAL MERIDIAN, JONES COUNTY, IOWA.

969 CORNERS TO BE INDEXED

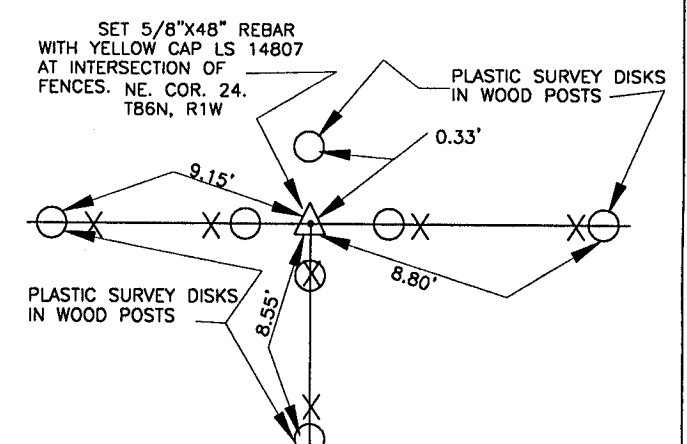
CORNER NE. COR. SECTION 24 TOWNSHIP 86N RANGE 1W
 NW1/4 NE1/4
 OFFICE FILE NO. 86124d_070901



PREVIOUSLY RECORDED IN BOOK N/A, PAGE N/A
 MONUMENT DESCRIPTION AND HOW ESTABLISHED FOUND 8"x12"x4" LIMESTONE NEAR COR. POST. SET 5/8"x48" REBAR WITH YELLOW CAP LS 14807 ALONGSIDE. SET REFERENCE POINTS AND TIED OUT AS INDICATED. NE. COR., NW. QUARTER, NE. QUARTER, SECTION 24, T86N, R1W, 5TH PRINCIPAL MERIDIAN, JONES COUNTY, IOWA.

970 CORNERS TO BE INDEXED

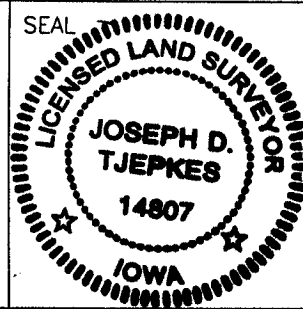
CORNER NORTHEAST SECTION 24 TOWNSHIP 86N RANGE 1W
 OFFICE FILE NO. 86124e_070901



PREVIOUSLY RECORDED IN BOOK N/A, PAGE N/A
 MONUMENT DESCRIPTION AND HOW ESTABLISHED SET 5/8"x48" REBAR WITH YELLOW CAP LS 14807 AT INTERSECTION OF FENCES NORTH-SOUTH-EAST-WEST (GOOD DEFINITION OF TOWNSHIP LINE) NORTHEAST CORNER SECTION 24, T86N, R1W, 5TH PRINCIPAL MERIDIAN, JONES COUNTY, IOWA

I hereby declare that this plat, survey or report was made by me or under my direct personal supervision and that I am a duly registered Land Surveyor under the laws of the State of Iowa.

Signed: *Joseph D. Tjepkes*
 Joseph D. Tjepkes L.S. Iowa Reg. No. 14807
 My Registration Renewal Date is December 31, 2002



J.D. TJEPKES LS 14807
 JONES COUNTY ENGINEER'S OFFICE
 19501 HWY. 64,
 ANAMOSA, IOWA,
 52205 (319)462-3785