

2005 0263

FILED
RECORDERS OFFICE
JONES COUNTY IOWA

05 JAN 21 AM 10:08

MARKIE KRUTZFIELD
RECORDER 7.00 pd

Prepared by Wm. Burger Land Surveyors 510 3rd Street West Court, Worthington, Iowa Phone 563 - 855 2028

UNITED STATES PUBLIC LAND SURVEY CORNER CERTIFICATE

Land Survey Monuments situated in Section 33, Township 86N, Range 1W, of the Fifth Principal Meridian, Jones County, Iowa. Previously recorded in N/A in the Office of the County Recorder

Monument Description and Remarks: (No Corner Certificates Found at the County Recorders Office)

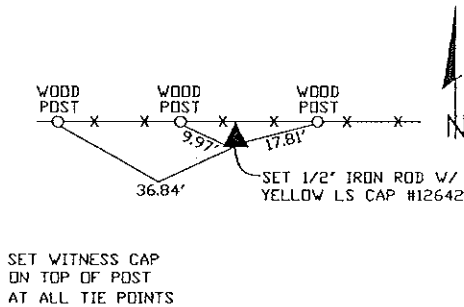
NW CORNER - SET 1/2" IRON ROD W/ YELLOW LS CAP # 12642 - SET ON LINE WITH THE N1/4 CORNER AND THE NE CORNER AND SET 653.40' WEST OF THE CENTERLINE OF TEMPLE HILL ROAD AS ACCORDING TO OLD DEED RECORD

SW CORNER NW1/4 NW1/4 - SET 1/2" IRON ROD W/ YELLOW LS CAP # 12642 - SET ON LINE AND MIDWAY BETWEEN THE NW CORNER AND THE W1/4 CORNER

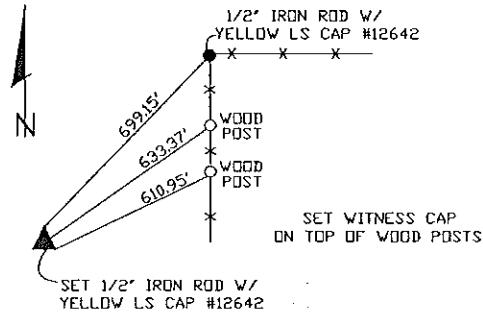
SW CORNER - FOUND STONE

PLAN VIEW

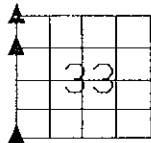
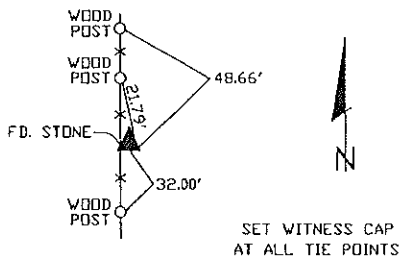
NW CORNER



SW CORNER NW1/4 NW1/4



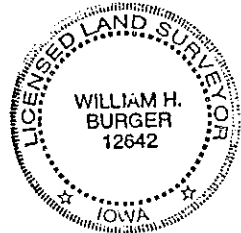
SW CORNER



SEC. 33 TWP. 86N RANGE 1W

CORNERS TO BE INDEXED

NW CORNER	33	86N	1W
SW CORNER NW1/4 NW1/4	33	86N	1W
SW CORNER	33	86N	1W



I hereby certify that this land surveying document was prepared and related survey work was performed by me or under my direct personal supervision and that I am a duly licensed Land Surveyor under the laws of the State of Iowa.

William H. Burger 1/17/05
William H. Burger Date

License number 12642

My license renewal date is December 31, 2006

Pages or Sheets covered by this seal Sheet 1 of 1