

UNITED STATES PUBLIC LAND SURVEY CORNER CERTIFICATE

OF

Land Survey Monuments situated in Section 36, Township 86 N, Range 1 W, of the Fifth Principal Meridian, Jones County, Iowa. Previously recorded in _____ in County Recorder's Office.

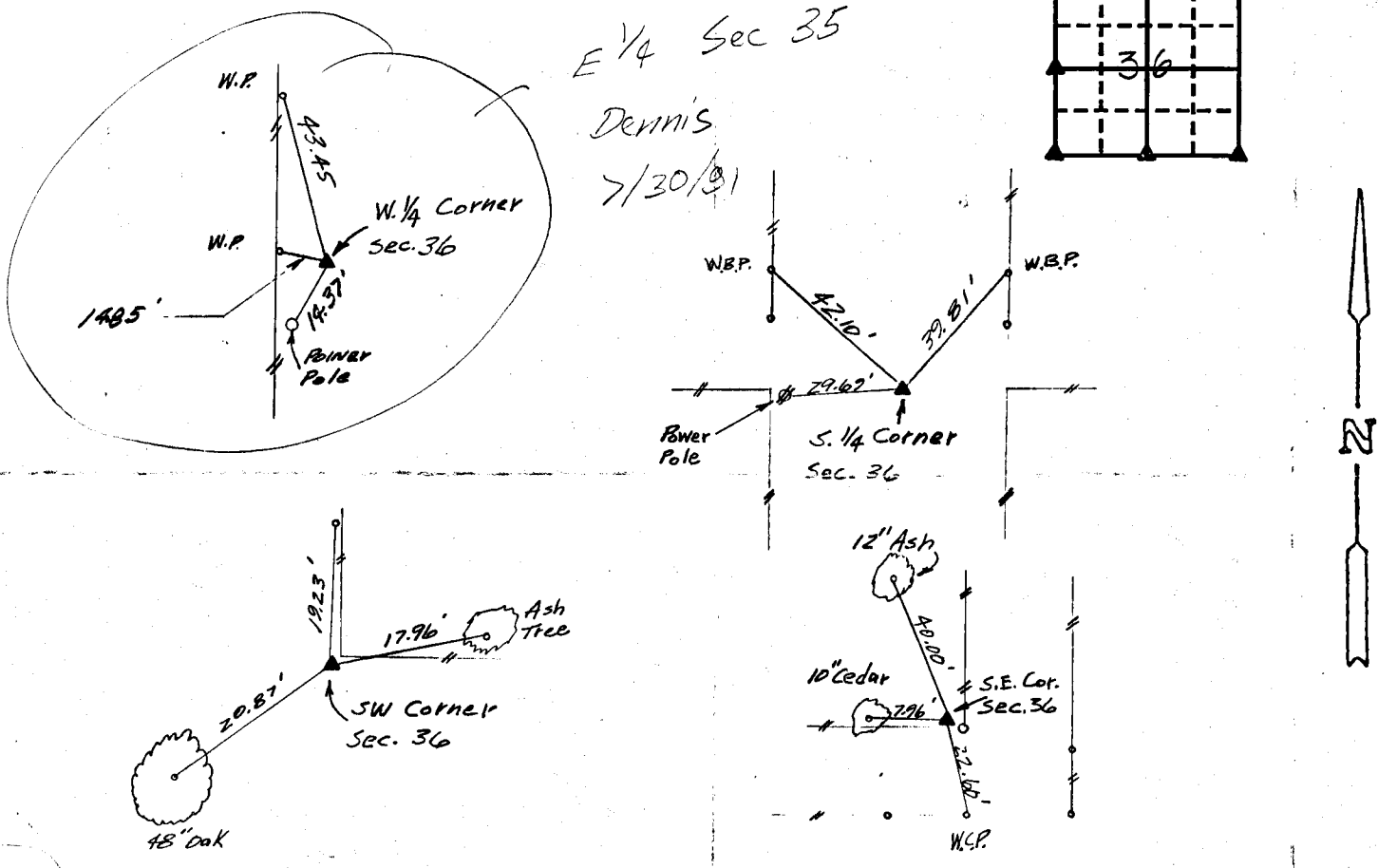
(book, page, document number, etc.)

(Show reason for preparing this certificate, the evidence and detailed procedures used in establishing the corner positions and monumentation found or placed.)

Monument Description and Remarks: NW Corner SW 1/4 - Set 1/2" Rebar
SW Corner - Fd. Stone set 1/2" Rebar
SE Corner SW 1/4 - Set 1/2" Rebar
SE Corner - Fd. Stone set 1/2" Rebar.

PLAN - VIEW

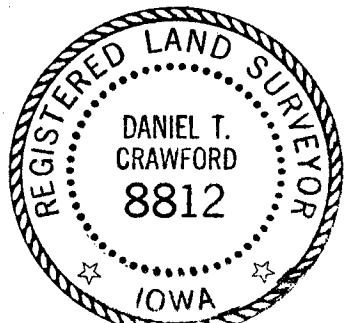
(Show a minimum of three reference ties to durable physical objects, relevant monuments and physical conditions that will enable recovery of the corner.)



I hereby certify that the survey work was completed and this certificate was prepared by me or under my direct personal supervision and that I am a duly registered land surveyor under the laws of the state of Iowa.

Signature: Daniel T. Crawford
 Name typed or printed: Daniel T. Crawford, R.L.S.
 Date: April 9, 1991 Reg. No. 8812

Corners	List Corners to be Indexed		
	Section	Twp	Range
NW Corner SW 1/4	36	86 N	R1W
SW Corner	36	86 N	R1W
SE Corner SW 1/4	36	86 N	R1W
SE Corner	36	86 N	R1W



SEAL