

FEEBOOK: 2009 3967 12/1/2009 11:56 AM  
 REC FEES: \$9.00  
 PAGES: 1

COPY

Marie Krutzfield, Recorder  
 Jones County, Iowa

PREPARED BY: MICHAEL J. WEBER, WEBER SURVEYING, LLC, 26789 46TH AVE, BERNARD, IA 52032 (563) 879-4173

UNITED STATES PUBLIC LAND SURVEY CORNER CERTIFICATE  
 OF

LAND SURVEY MONUMENTS SITUATED IN SECTION 3, TOWNSHIP 86 NORTH, RANGE 1 WEST  
 OF THE FIFTH PRINCIPAL MERIDIAN, JONES COUNTY, IOWA.  
 PREVIOUSLY RECORDED NONE UNLESS OTHERWISE NOTED  
(book, page, document number, etc.)

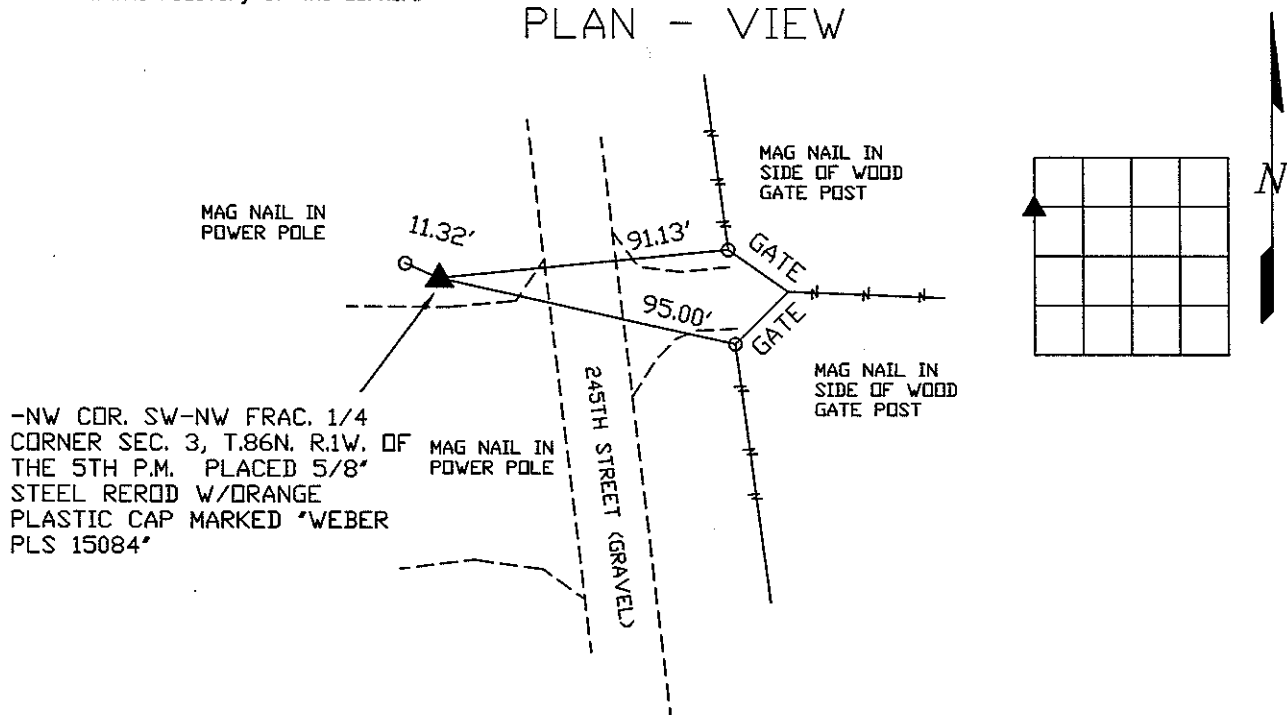
(Show reason for preparing this certificate, the evidence and detailed procedures used in establishing the corner positions and monumentation found or placed.)

Monument Description and Remarks:

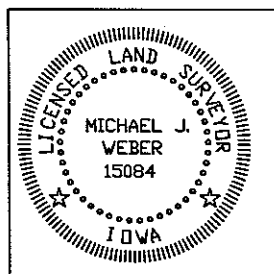
-NW COR. SW-NW FRAC. 1/4 CORNER SEC. 3, T.86N. R.1W. OF THE 5TH P.M. PLACED 5/8" STEEL ROD W/ORANGE PLASTIC CAP MARKED "WEBER PLS 15084" ESTABLISHED CORNER ONLINE AND A PROPORTIONATE DISTANCE BETWEEN THE W 1/4 AND THE NW CORNER OF SAID SECTION 3

(Show a minimum of three reference ties to durable physical objects, relevant monuments and physical conditions that will enable recovery of the corner.)

PLAN - VIEW



DWG. NO. TAKES PARCEL  
 2009-102



I HEREBY CERTIFY THAT THIS LAND SURVEYING DOCUMENT WAS PREPARED AND THE RELATED SURVEY WORK WAS PERFORMED BY ME OR UNDER MY DIRECT PERSONAL SUPERVISION AND THAT I AM A DULY LICENSED LAND SURVEYOR UNDER THE LAWS OF THE STATE OF IOWA.

*Michael Weber* November 25, 2009  
 MICHAEL J. WEBER (DATE)  
 LICENSE NUMBER 15084

MY LICENSE RENEWAL DATE IS DECEMBER 31, 2009

SHEETS COVERED BY THIS SEAL: This Sheet

List Corners to be Indexed  
 Corner Sec Twp Range  
 NW COR. SW-NW 3 86N 1W