

2005 2596

FILED
RECORDERS OFFICE
JONES COUNTY IOWA

05 JUL 27 AM 10:04

MARIE KRUTZFIELD
RECORDER 7.00 pd

PREPARED BY: MICHAEL J. WEBER, WEBER SURVEYING, LLC, 26789 46TH AVE, BERNARD, IA 52032 (563) 879-4173

UNITED STATES PUBLIC LAND SURVEY CORNER CERTIFICATE OF

LAND SURVEY MONUMENTS SITUATED IN SECTION 7, TOWNSHIP 86 NORTH, RANGE 1 WEST
OF THE FIFTH PRINCIPAL MERIDIAN, JONES COUNTY, IOWA.
PREVIOUSLY RECORDED NONE UNLESS OTHERWISE NOTED

(book, page, document number, etc.)

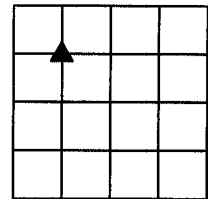
(Show reason for preparing this certificate, the evidence and detailed procedures used in establishing the corner positions and monumentation found or placed.)

Monument Description and Remarks:

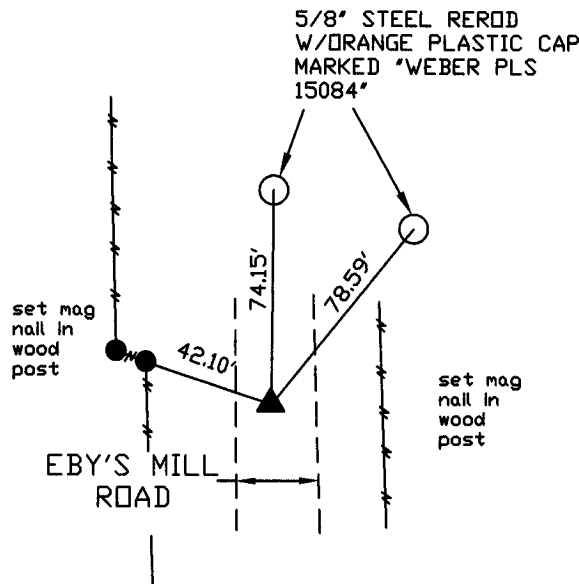
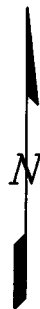
SW COR. NE 1/4 NW FRAC. 1/4 SEC. 7, T.86N. R.1W. OF THE 5TH P.M. PLACED 5/8" STEEL REROD W/ORANGE PLASTIC CAP MARKED "WEBER PLS 15084", established corner by dividing the NW fractional corner as shown on Plat of Survey of Parcel 2005-147.

PLAN - VIEW

(Show a minimum of three reference ties to durable physical objects, relevant monuments and physical conditions that will enable recovery of the corner.)



SEC. 7, T.86N. R.1W.



861079-071405, tie

1754 ✓
✓