

UNITED STATES PUBLIC LAND SURVEY CORNER CERTIFICATE

OF

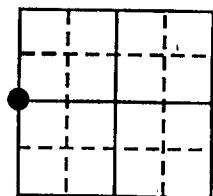
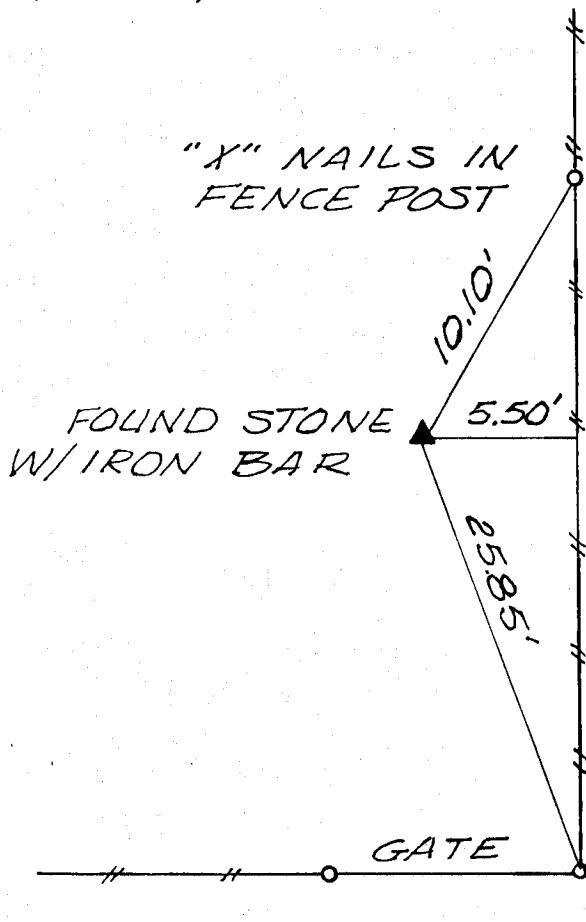
Land Survey Monuments situated in Section 8, Township 86 North, Range 1 West, of the Fifth Principal Meridian, Jones County, Iowa.
Previously recorded in Book ---, Page ---.

(Show reason for preparing this certificate, the evidence and detailed procedures used in establishing the corner positions and monumentation found or placed.)

Monument Description and Remarks: Found stone with rod underneath, approximately 1 foot deep. No certificate previously recorded in Recorder's Office.
Old corner ties accessories non-existent.

PLAN - VIEW

(Show a minimum of three reference ties to durable physical objects, relevant monuments and physical conditions that will enable recovery of the corner.)



Sec. 8, T86N
R1W



WASH.
E 1/4 COR SEC 7
ON CARD
12-21-90
M.S.

Date of Field Work: March 6, 1990

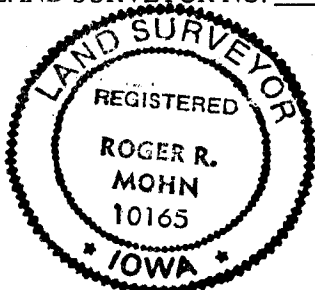
TSE No. 90-02

I hereby certify that the survey work was completed and this certificate was prepared by me or under my direct personal supervision and that I am a duly registered land surveyor under the laws of the state of Iowa.

Roger R. Mohn September 25, 1990
DATE

REGISTERED LAND SURVEYOR NO. 10165

SEAL



List Corners to be Indexed

Corners	Section	Twp	Range
W 1/4	8	86N	1W
E 1/4	7	86N	1W

THIS IS NOT A CERTIFICATION

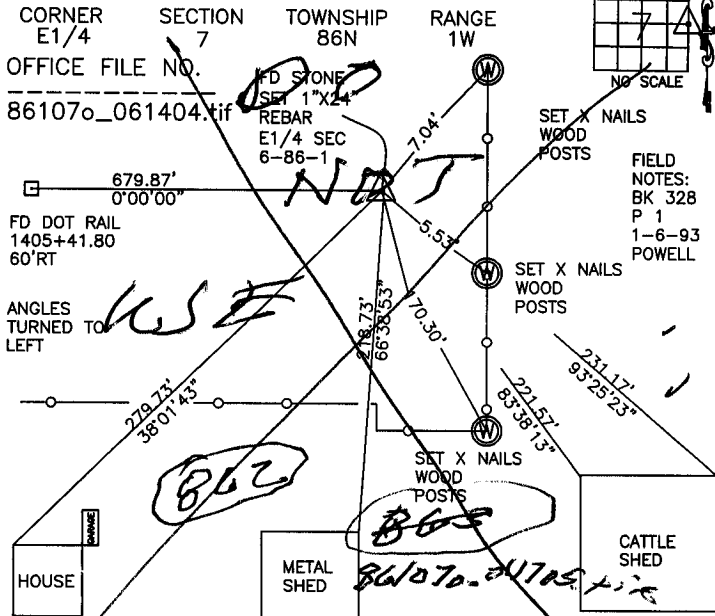
F

JONES COUNTY ENGINEER'S OFFICE, 19501 HWY. 64, ANAMOSA, IOWA, 52205 (319)462-3785

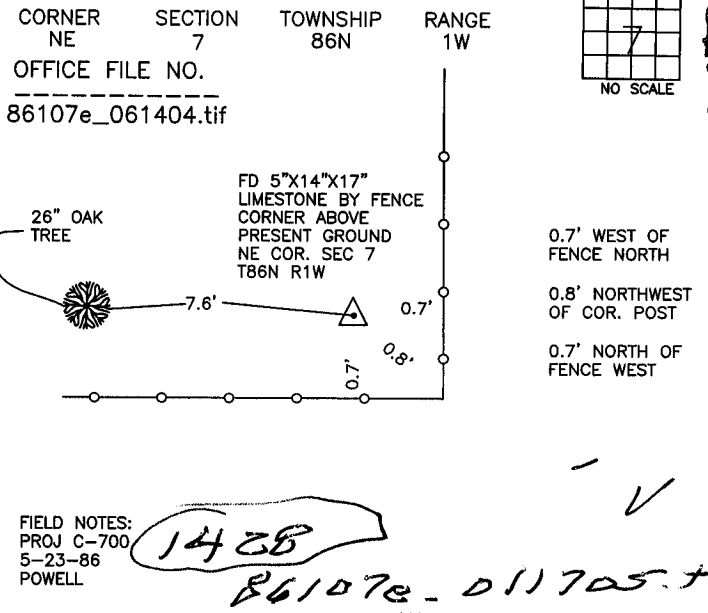
UNITED STATES PUBLIC LAND SURVEY CORNER CERTIFICATE

LAND SURVEY MONUMENTS SITUATED IN SECTION 7, TOWNSHIP 86 NORTH, RANGE 1 WEST OF THE 5TH P.M., JONES COUNTY, IOWA

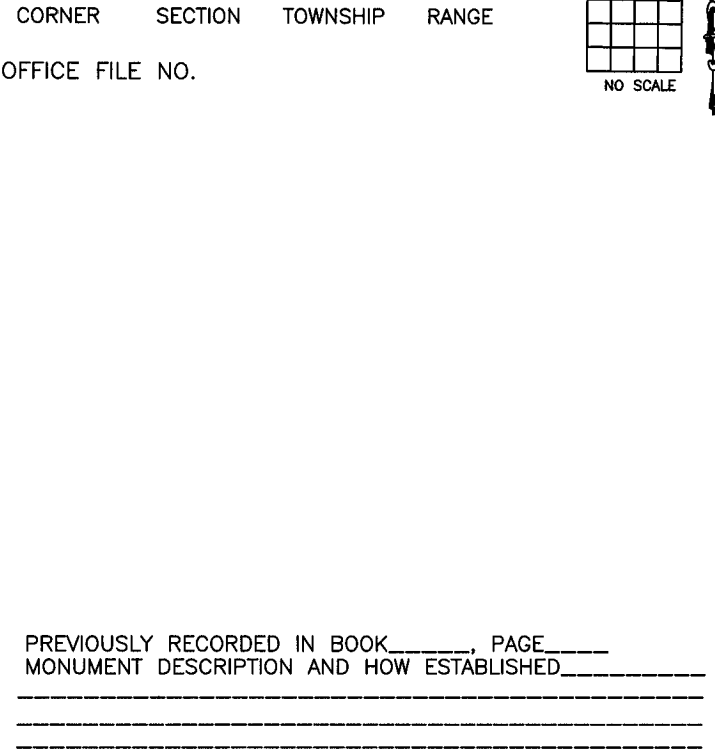
CORNERS TO BE INDEXED



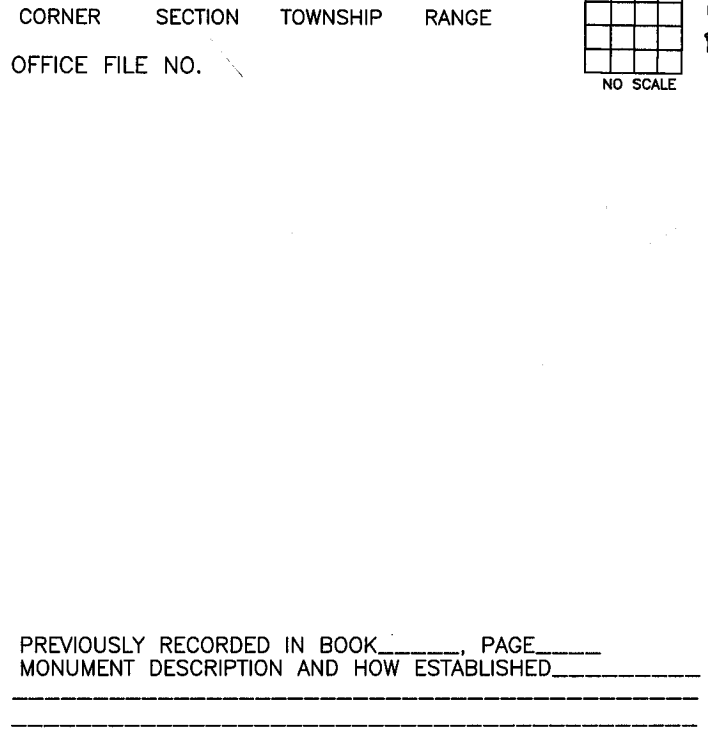
CORNERS TO BE INDEXED



CORNERS TO BE INDEXED



CORNERS TO BE INDEXED



~~I hereby declare that this plat, survey or report was made by me or under my direct personal supervision and that I am a duly registered Land Surveyor under the laws of the State of Iowa.~~

Signed: _____

SEAL

JONES COUNTY ENGINEER'S OFFICE

19501 HWY. 64,
ANAMOSA, IOWA,
52205 (319)462-3785