

1999 3198

FILED
RECORDERS OFFICE
JONES COUNTY IOWA

99 SEP -8 AM 10: 30

MARIE KRUTZFIELD
RECORDER 6.00 pd

PREPARED BY HALL & HALL ENGINEERS, INC. 209 28TH STREET N.E. CEDAR RAPIDS, IOWA 52402 (319) 362-9548

SECTION CORNER CERTIFICATE

OF
LAND SURVEY MONUMENTS SITUATED IN SECTION 8, TOWNSHIP 86 NORTH,
RANGE 1 WEST, OF THE FIFTH PRINCIPAL MERIDIAN, JONES COUNTY, IOWA.

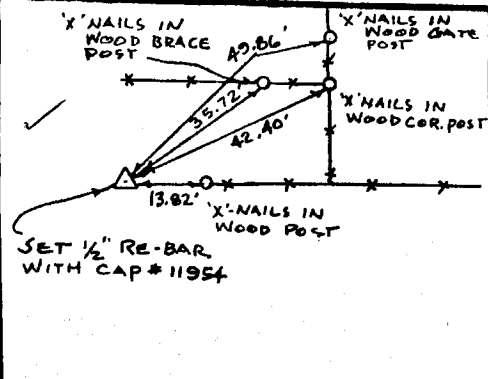
PREVIOUSLY RECORDED IN BOOK _____ AT PAGE _____

MONUMENT DESCRIPTION AND REMARKS:

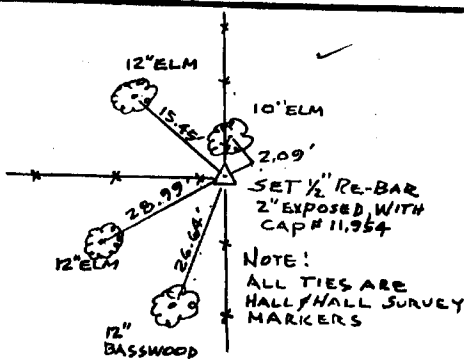
- N $\frac{1}{4}$ COR. SET $\frac{1}{2}$ " RE-BAR, WITH CAP #11954 FLUSH
- NE COR. SET $\frac{1}{2}$ " RE-BAR, 2" EXPOSED, WITH CAP #11954
- E $\frac{1}{4}$ COR. SET $\frac{1}{2}$ " RE-BAR FLUSH, WITH CAP #11954

RECOVERY TIE DRAWING

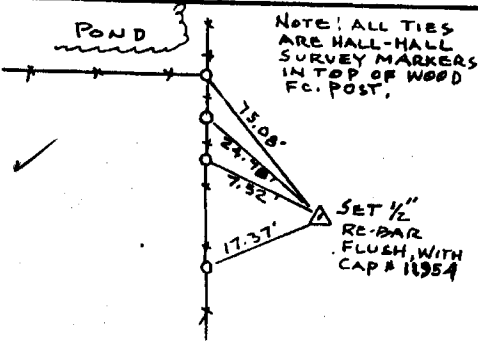
N $\frac{1}{4}$ COR. 8-86-1



NE COR. 8-86-1



E $\frac{1}{4}$ COR. 8-86-1



I hereby certify that this land surveying document was prepared and the related survey work was performed by me or under my direct personal supervision and that I am a duly Licensed Land Surveyor under the laws of the State of Iowa.

By: *Donald J. Johnson* Date: 9-8-99
 Donald J. Johnson, L.S. #11954
 My license expires on December 31, 2000

Pages or sheets covered by this book:
 (Entire submission unless specified here)

- REASON FOR PREPARING CERTIFICATE
- A) THERE IS NO CERTIFICATE FOR THE CORNER ON FILE WITH THE RECORDER OF THE COUNTY IN WHICH THE CORNER IS LOCATED
 - B) CORNER POSITION DIFFERS FROM THAT SHOWN IN THE PUBLIC RECORDS OF THE COUNTY IN WHICH THE CORNER IS LOCATED
 - C) THE CORNER MONUMENT HAS BEEN REPLACED OR MODIFIED
 - D) THE REFERENCE TIES REFERRED TO IN AN EXISTING PUBLIC RECORD ARE INCORRECT

GOVERNMENT CORNER PROPERTY CORNER FOUND 1/2" x 3/4" U.S. CAP SET --- (EXISTING FENCE LINE) --- PROPERTY LINE	SHEET FILE NO. <u>US PUBLIC LAND SURVEY RECORD</u> PROJECT FILE NO. <u>JONES COUNTY ENGINEER</u>	HALL AND HALL ENGINEERS, INC. 209 28TH STREET N.E. CEDAR RAPIDS, IOWA 52402 (319) 362-9548
	DWS 11/17 1-7-98 NONE COUNTY 6226	

PREPARED BY HALL & HALL ENGINEERS, INC. 209 29TH STREET N.E. CEDAR RAPIDS, IOWA 52402 (319) 362-9548
SECTION CORNER CERTIFICATE

OF
 LAND SURVEY MONUMENTS SITUATED IN SECTION 8, TOWNSHIP 86 NORTH,
 RANGE 1 WEST, OF THE FIFTH PRINCIPAL MERIDIAN, JONES COUNTY, IOWA.

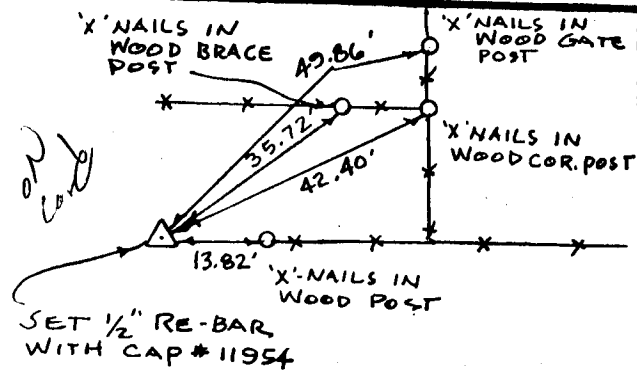
PREVIOUSLY RECORDED IN BOOK _____ AT PAGE _____

MONUMENT DESCRIPTION AND REMARKS:

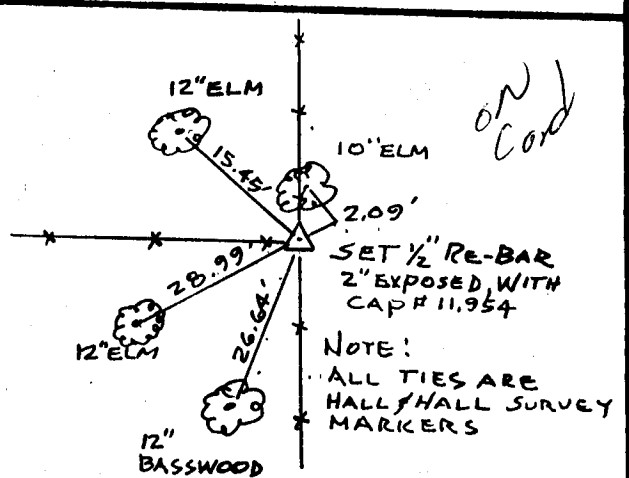
N¹/₄ COR. SET 1/2" RE-BAR, WITH CAP #11954 FLUSH
 NE COR. SET 1/2" RE-BAR, 2" EXPOSED, WITH CAP #11954
 E¹/₄ COR. SET 1/2" RE-BAR FLUSH, WITH CAP #11954

RECOVERY TIE DRAWING

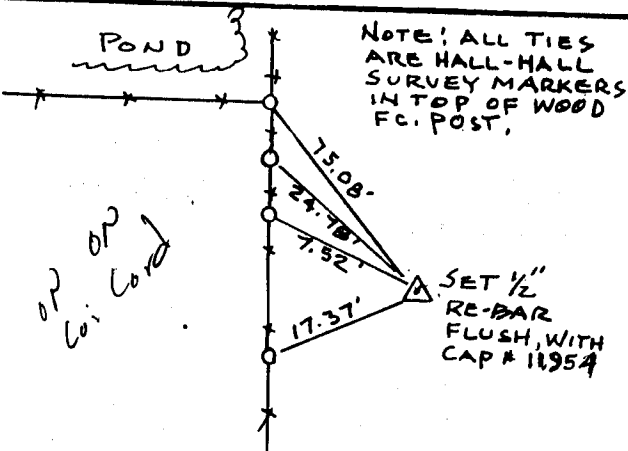
N¹/₄ COR. 8-86-1



NE COR. 8-86-1



E¹/₄ COR. 8-86-1



I hereby certify that this land surveying document was prepared and the related survey work was performed by me or under my direct personal supervision and that I am a duly licensed Land Surveyor under the laws of the State of Iowa.
 Signed: Daniel J. Johnson Date: 11-4-98
 Daniel J. Johnson, L.S. 11954
 My license renewal date is December 31, 1998
 Pages or sheets covered by this cost:
 (Enter submission unless specified here)

- REASON FOR PREPARING CERTIFICATE:
- A) THERE IS NO CERTIFICATE FOR THE CORNER ON FILE WITH THE RECORDER OF THE COUNTY IN WHICH THE CORNER IS LOCATED
 - B) CORNER POSITION DIFFERS FROM THAT SHOWN IN THE PUBLIC RECORDS OF THE COUNTY IN WHICH THE CORNER IS LOCATED
 - C) THE CORNER MONUMENT HAS BEEN REPLACED OR MODIFIED
 - D) THE REFERENCE TIES REFERRED TO IN AN EXISTING PUBLIC RECORD ARE INCORRECT

LEGEND Δ GOVERNMENT CORNER ○ PROPERTY CORNER (LOAD) ○ 1/2" 1/2" w/ LS CAP SET - - - EXISTING FENCE LINE ——— PROPERTY LINE	SHEET NO. <u>US PUBLIC LAND SURVEY RECORD</u>	HALL AND HALL ENGINEERS, INC. 209 29TH STREET N.E. CEDAR RAPIDS, IOWA 52402 (319) 362-9548
	PROJECT NO. <u>JONES COUNTY ENGINEER</u>	
DRAWN BY <u>DWS</u>	CHECKED BY <u>LRM</u>	DATE <u>11-7-98</u>
SCALE <u>NONE</u>	COUNTY <u>JONES</u>	SHEET NO. <u>1201</u>