

COPY

Jones County Iowa
Marie Krutzfield, Recorder
Fee Book 2010 3411

12/09/2010 @1159AM
ZSC SEC COR CERT
Book: Page: # Pages: 1
Total Fees: \$0.00

PREPARED BY
CLARENCE J. WALTON, JONES COUNTY ENGINEER'S OFFICE, 19501 HWY. 64, ANAMOSA, IOWA, 52205 (319) 462-3785

UNITED STATES PUBLIC LAND SURVEY CORNER CERTIFICATE

LAND SURVEY MONUMENTS SITUATED IN SECTION 10, TOWNSHIP 85 NORTH,
RANGE 3 WEST OF THE 5TH PRINCIPAL MERIDIAN, JONES COUNTY, IOWA.

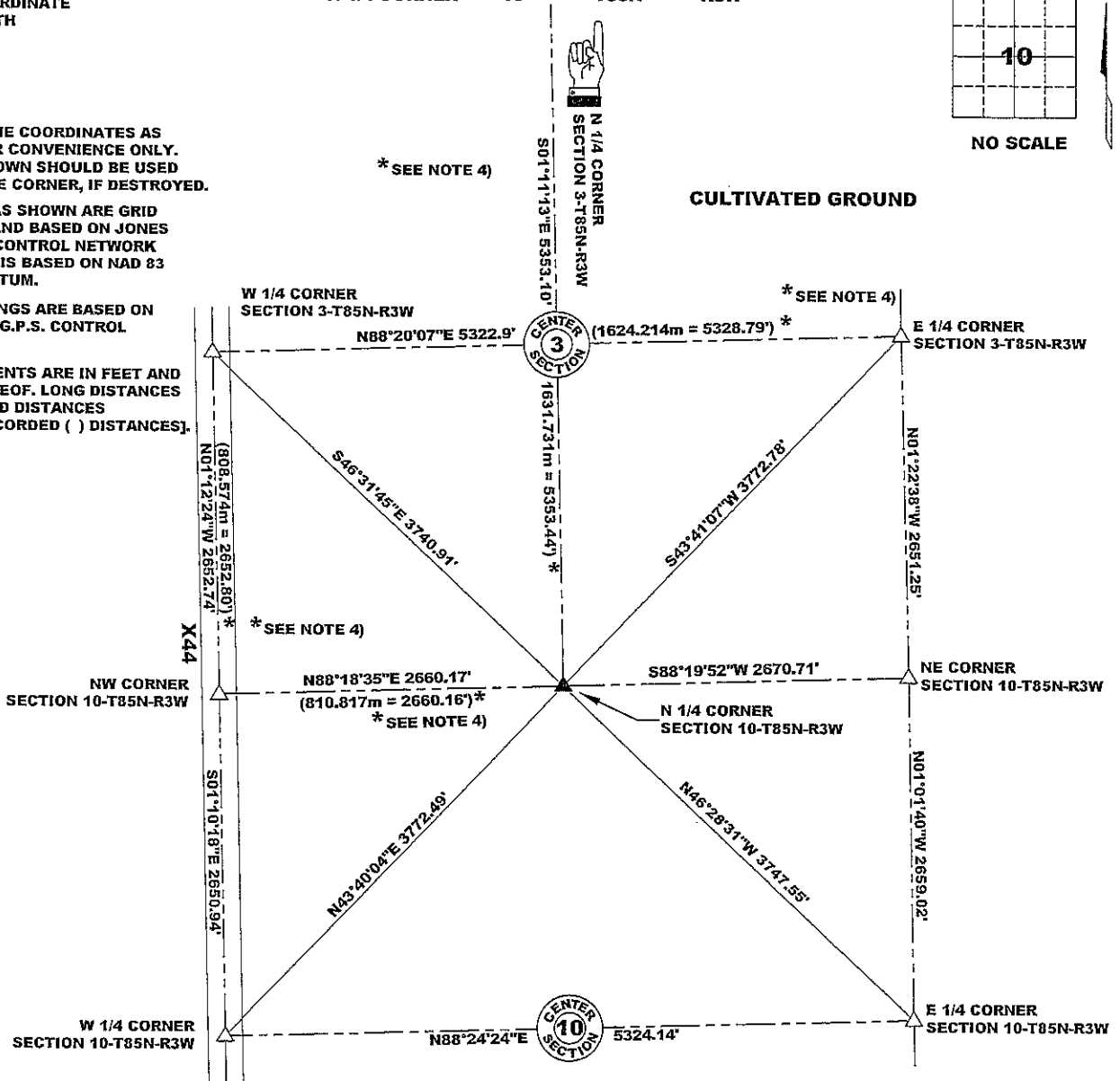
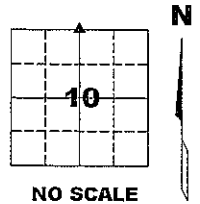
PROJECT: 1311

STATE PLANE COORDINATE
NAD 83 IOWA NORTH
N 3542395.29
E 5549888.38

NOTES:

- 1) THE STATE PLANE COORDINATES AS SHOWN ARE FOR CONVENIENCE ONLY. THE TIES AS SHOWN SHOULD BE USED TO REPLACE THE CORNER, IF DESTROYED.
- 2) COORDINATES AS SHOWN ARE GRID COORDINATES AND BASED ON JONES COUNTY G.P.S. CONTROL NETWORK WHICH IN TURN IS BASED ON NAD 83 IOWA NORTH DATUM.
- 3) BASIS OF BEARINGS ARE BASED ON JONES COUNTY G.P.S. CONTROL NETWORK.
- 4) ALL MEASUREMENTS ARE IN FEET AND DECIMALS THEREOF. LONG DISTANCES SHOWN ARE GRID DISTANCES [EXCEPTING RECORDED () DISTANCES].

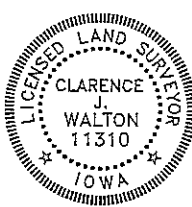
CORNER SECTION TOWNSHIP RANGE
N 1/4 CORNER 10 T85N R3W



PREVIOUSLY RECORDED IN RECORDER'S DOCUMENT 1999 0327

MONUMENT DESCRIPTION AND HOW ESTABLISHED FOUND 1" BORE PIPE WITH 5/8" REBAR WITH MANGLED PLASTIC CAP LYING AT A ±20° ANGLE OFF OF PLUMB, 6" BELOW SURFACE OF GROUND USING EARTH TECH TIES MADE FOR I.D.O.T. LOWERED PIPE USING ITS BASE AS ITS TRUE POSITION. SET A PERMANENT MAGNET ON TOP OF PIPE FOR DETECTION PURPOSES. TOP OF PIPE IS ±30" BELOW PRESENT GROUND SURFACE. THERE ARE NO DISTINCTIVE FEATURES WITHIN A HALF MILE TO TIE TO. BECAUSE OF SUBSOIL TILLAGE, WE DID NOT SET ANY OTHER MONUMENT ABOVE THE PIPE AND MAGNET.

FIELD BOOK 437, PAGE 78. DATE OF SURVEY: 10/20/10



I hereby certify that this land surveying document and the related survey work was performed by me or under my direct personal supervision and that I am a duly registered Land Surveyor under the laws of the State of Iowa.

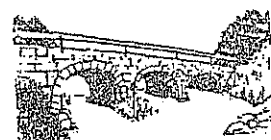
Signed: *Clarence J. Walton* 12/9/10
Clarence J. Walton, L.S.
My Registration Renewal Date is December 31, 2011
Iowa License Number 11310
Pages or sheets covered by this seal: 1 of 1.

- A. THERE IS NO CERTIFICATE FOR THE CORNER ON FILE WITH THE RECORDER OF THE COUNTY IN WHICH THE CORNER IS LOCATED.
- B. THE CORNER MONUMENT HAS BEEN REPLACED OR MODIFIED.
- C. THE SURVEYOR IN RESPONSIBLE CHARGE OF THE LAND SURVEYING ACCEPTS A CORNER POSITION THAT DIFFERS FROM THAT SHOWN IN THE PUBLIC RECORDS OF THE COUNTY IN WHICH THE CORNER IS LOCATED.
- D. THE REFERENCE TIES REFERRED TO IN AN EXISTING PUBLIC RECORD NO LONGER EXIST.

CORNERS TO BE INDEXED

CORNER	SECTION	TOWNSHIP	RANGE
N 1/4 CORNER	10	85N	3W
S 1/4 CORNER	3	85N	3W

JONES COUNTY ENGINEER'S OFFICE



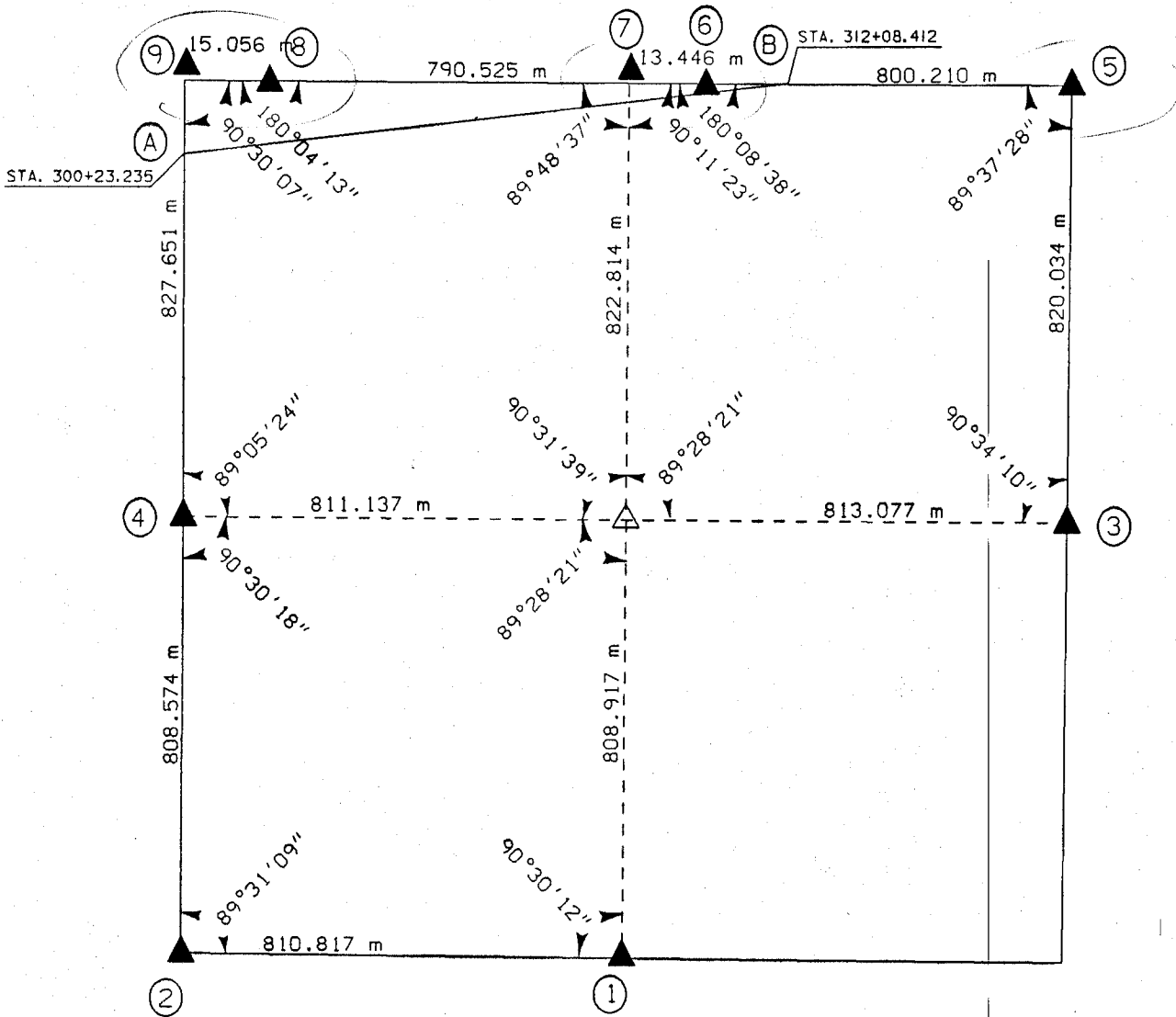
19501 HWY. 64, ANAMOSA, IOWA 52205
(319) 462-3785

UNITED STATES PUBLIC SECTION CORNER CERTIFICATION
AND LAND CORNER SURVEY
SECTION 3 T-85N R-3W

MADE FOR
IOWA DEPARTMENT OF TRANSPORTATION FOR THE PURPOSE OF
RIGHT OF WAY DESCRIPTIONS ON PRIMARY ROAD No. U.S. 151

MADE BY
MICHAEL R. FAGLE R.L.S. No. 8505
JONES COUNTY, IOWA NHS-151-3(84)--19-57
APRIL 1998 THRU OCTOBER 1998

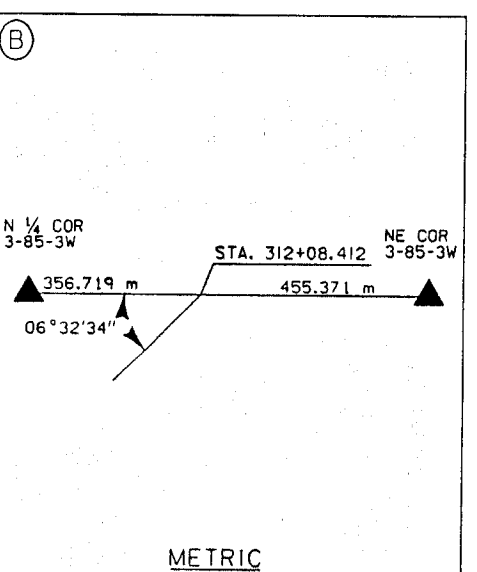
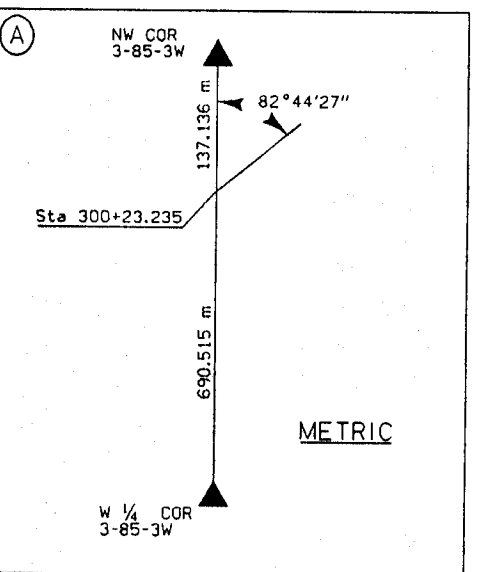
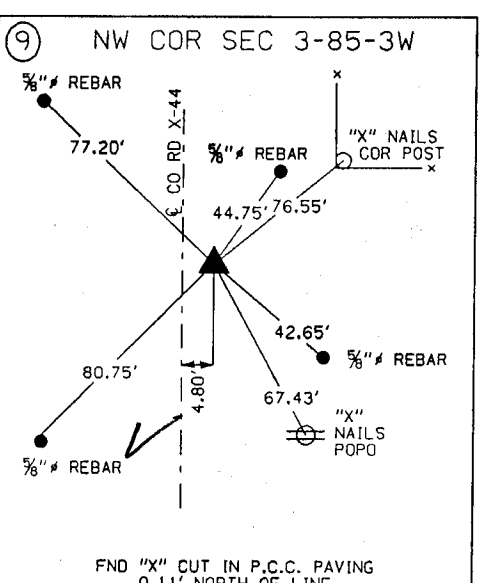
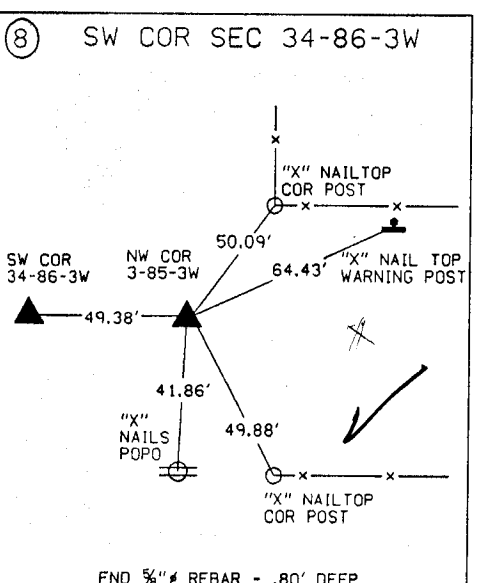
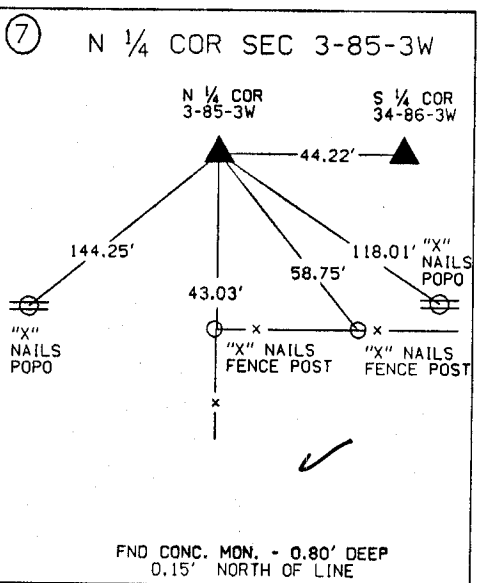
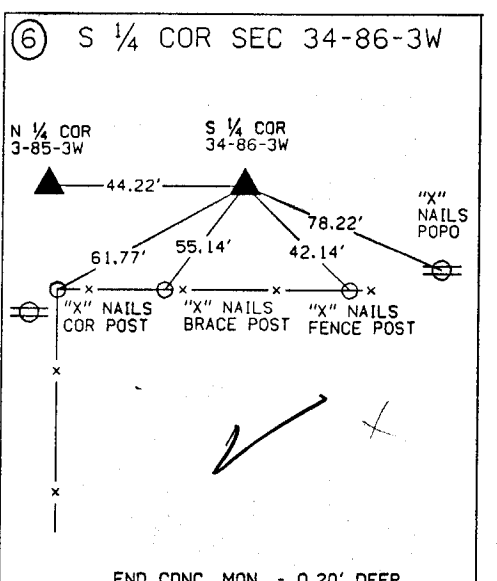
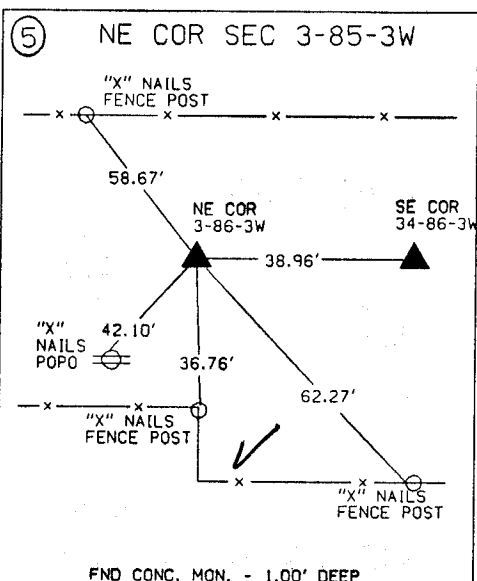
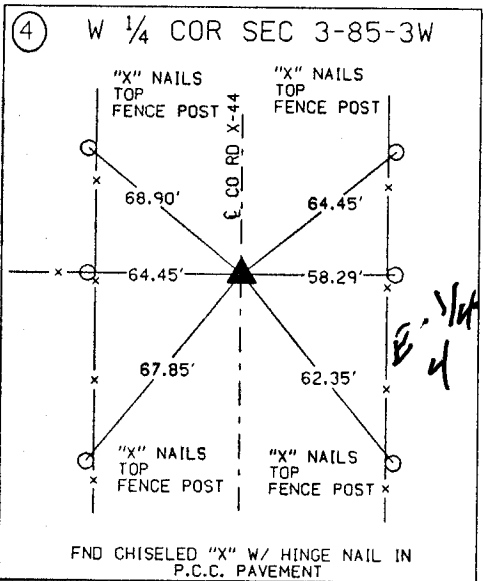
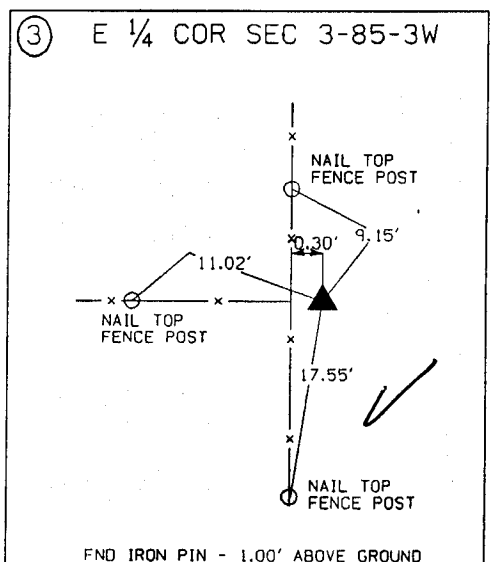
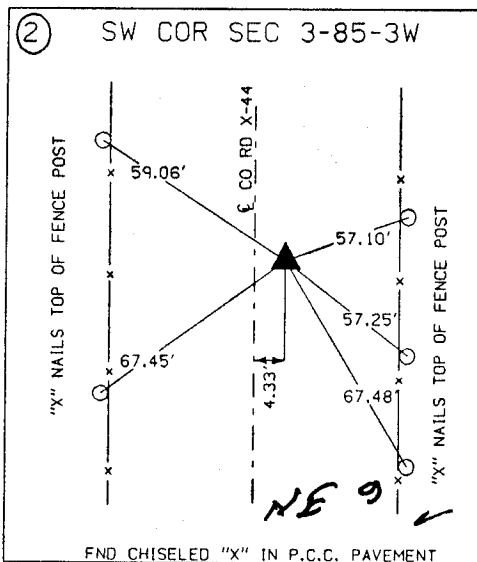
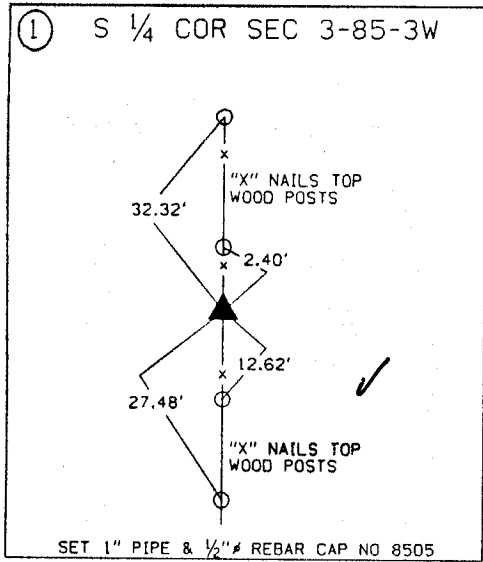
ALL DISTANCES WERE CAREFULLY MEASURED AND MAY NOT AGREE WITH ROAD SURVEY STATIONING



	I hereby certify that this Land Surveying document was prepared by me or under my direct personal supervision and that I am a duly Licensed Land Surveyor under the laws of the State of Iowa.	
	<i>Michael R. Fagle</i>	1-21-99
	MICHAEL R. FAGLE	Date
	License number 8505	
	My license renewal date is December 31, 2000	
Pages or sheets covered by this seal:		
Two (2)		

UNITED STATES PUBLIC SECTION CORNER CERTIFICATION
AND LAND CORNER SURVEY

SECTION 3 T-85N R-3W



ALL TIES ARE ENGLISH UNLESS OTHERWISE NOTED