

COPY

Jones County Iowa  
 Marie Krutzfield, Recorder  
 Fee Book 2010 3422  
 12/09/2010 @0143PM  
 ZSC SEC COR CERT  
 Book: Page: # Pages: 1  
 Total Fees: \$0.00

PREPARED BY  
 CLARENCE J. WALTON, JONES COUNTY ENGINEER'S OFFICE, 19501 HWY. 64, ANAMOSA, IOWA, 52205 (319) 462-3785

UNITED STATES PUBLIC LAND  
 SURVEY CORNER CERTIFICATE

LAND SURVEY MONUMENTS SITUATED IN SECTION 12, TOWNSHIP 85 NORTH,  
 RANGE 3 WEST OF THE 5TH PRINCIPAL MERIDIAN, JONES COUNTY, IOWA.

PROJECT: M-1311

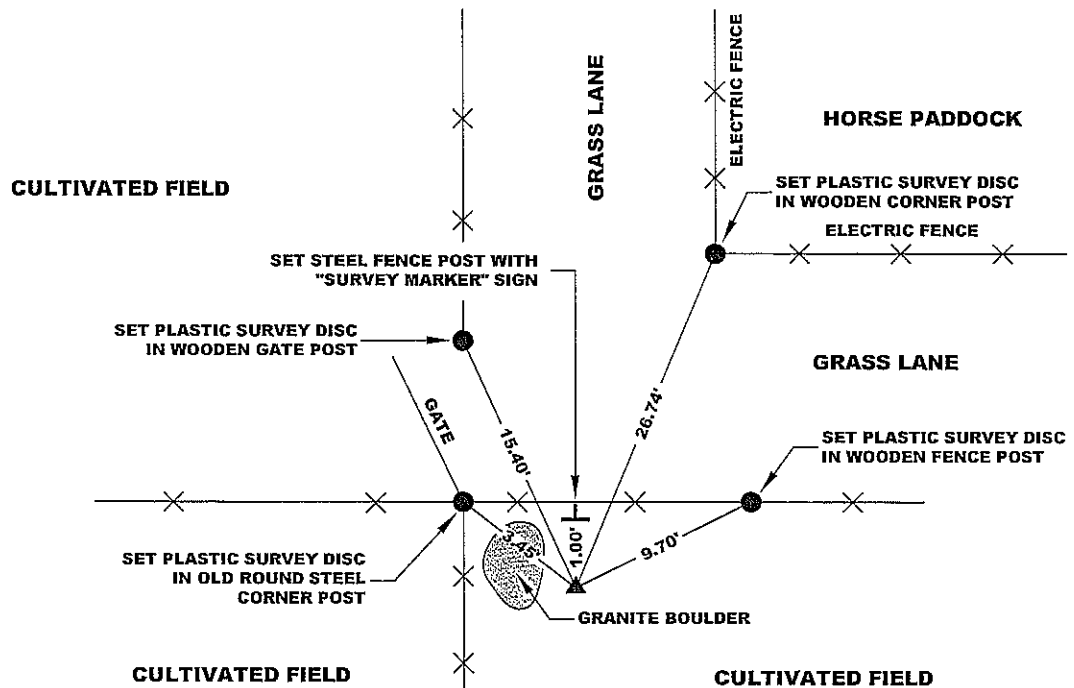
STATE PLANE COORDINATE  
 NAD 83 IOWA NORTH  
 N 3539983.62  
 E 5560599.06

CORNER SECTION TOWNSHIP RANGE  
 CENTER 12 T85N R3W



NO SCALE

NOTE:  
 THE STATE PLANE COORDINATE AS INDICATED IS FOR CONVENIENCE ONLY.  
 THE TIES AS SHOWN SHOULD BE USED TO REPLACE THE CORNER, IF  
 DESTROYED



"SURVEY MARKER"  
 SIGN

PLEASE  
 PROTECT  
 NEARBY  
**SURVEY  
 MARKER**  
 IF LOCATION OF THIS MARK  
 IS ENDANGERED  
 PLEASE CONTACT  
 JONES COUNTY  
 ENGINEER'S OFFICE  
 319-462-3785

SURVEY DISC

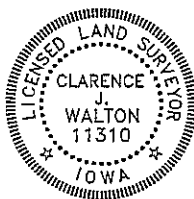


OPC ORANGE PLASTIC CAP  
 ( ) RECORDED AS

PREVIOUSLY RECORDED IN RECORDER'S DOCUMENT N/A

MONUMENT DESCRIPTION AND HOW ESTABLISHED FOUND 15" X 12-1/2" X 7" SPLIT GREY GRANITE STONE FOLLOWING SURVEY FOR JOHN H. HERRON BY HENRY D. SMITH, COUNTY SURVEYOR, DECEMBER 10, 1863; RECORDED IN THE RED SURVEYOR'S RECORD BOOK IN THE JONES COUNTY RECORDER'S OFFICE ON PAGE 372. STONE IS 1.00' SOUTH STEEL FENCE POST WITH "SURVEY MARKER" SIGN WHICH WAS SET AS A WITNESS TO THE STONE. TWO 5/8" X 24" REBAR ON SIDES OF STONE TO STABILIZE STONE AND AID IN IDENTIFICATION OF STONE AS THERE ARE OTHER STONES IN VICINITY.

FIELD BOOK 437, PAGE 77. DATE OF SURVEY: 10/22/10



I hereby certify that this land surveying document and the related survey work was performed by me or under my direct personal supervision and that I am a duly registered Land Surveyor under the laws of the State of Iowa.

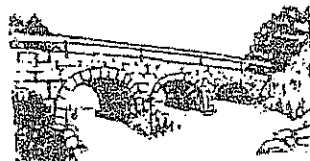
Signed: *Clarence J. Walton* 12/9/10  
 Clarence J. Walton, L.S.  
 My Registration Renewal Date is December 31, 2011  
 Iowa License Number 11310  
 Pages or sheets covered by this seal: 1 of 1.

- A. THERE IS NO CERTIFICATE FOR THE CORNER ON FILE WITH THE RECORDER OF THE COUNTY IN WHICH THE CORNER IS LOCATED.
- B. THE CORNER MONUMENT HAS BEEN REPLACED OR MODIFIED.
- C. THE SURVEYOR IN RESPONSIBLE CHARGE OF THE LAND SURVEYING ACCEPTS A CORNER POSITION THAT DIFFERS FROM THAT SHOWN IN THE PUBLIC RECORDS OF THE COUNTY IN WHICH THE CORNER IS LOCATED.
- D. THE REFERENCE TIES REFERRED TO IN AN EXISTING PUBLIC RECORD NO LONGER EXIST.

CORNERS TO BE INDEXED

CORNER	SECTION	TOWNSHIP	RANGE
CENTER	12	85N	3W

JONES COUNTY ENGINEER'S OFFICE



19501 HWY. 64, ANAMOSA, IOWA 52205  
 (319) 462-3785