

2005 1176

FILED
RECORDERS OFFICE
JONES COUNTY IOWA

05 APR -6 PM 4:14

MARIE KRUTZFIELD
RECORDER 7.00Pd

J.D. TJEKES, LS. 14807, 23428 RIDGE ROAD, ANAMOSA, IOWA, 52205 (319-462-6067)

UNITED STATES PUBLIC LAND SURVEY CORNER CERTIFICATE

LAND SURVEY MONUMENTS SITUATED IN SECTION 15, TOWNSHIP 85
NORTH, RANGE 3 WEST OF THE 5TH P.M., JONES COUNTY, IOWA

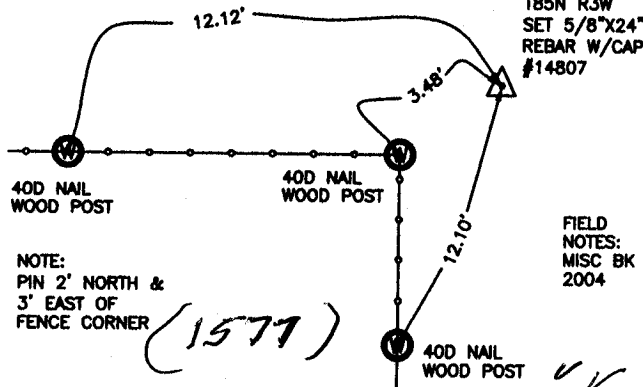
CORNERS TO BE INDEXED

CORNER SECTION TOWNSHIP RANGE
NE-SW 15 85N 3W
OFFICE FILE NO. _____



NO SCALE

R5315m - 040505, T16



NE COR. SW
QT.
SECTION 15
T85N R3W
SET 5/8"x24"
REBAR W/CAP
#14807

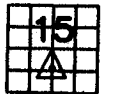
FIELD
NOTES:
MISC BK
2004

NOTE:
PIN 2' NORTH &
3' EAST OF
FENCE CORNER
(1577)

PREVIOUSLY RECORDED IN BOOK NA, PAGE NA
MONUMENT DESCRIPTION AND HOW ESTABLISHED _____
PER BREAK DOWN OF SECTION 15 T85N R3W, SET 5/8"x24"
REBAR W/YELLOW CAP #14807. TIED AS INDICATED.

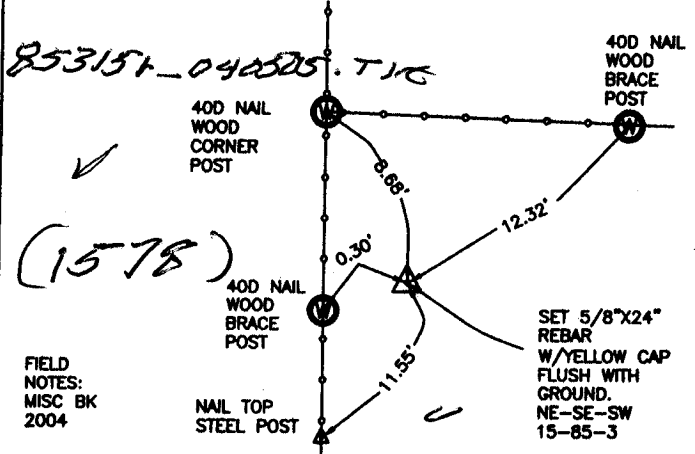
CORNERS TO BE INDEXED

CORNER SECTION TOWNSHIP RANGE
NE-SE-SW 15 85N 3W
OFFICE FILE NO. _____



NO SCALE

R5315m - 040505, T16



FIELD
NOTES:
MISC BK
2004

SET 5/8"x24"
REBAR
W/YELLOW CAP
FLUSH WITH
GROUND.
NE-SE-SW
15-85-3

PREVIOUSLY RECORDED IN BOOK NA, PAGE NA
MONUMENT DESCRIPTION AND HOW ESTABLISHED _____
SET 5/8"x24" REBAR W/YELLOW CAP #14807, ON LINE AND AT
MIDPOINT BETWEEN S1/4 SEC. 15 & CENTER SEC. 15-85-3.
NE-SE-SW SECTION 15-85-3 TIES AS INDICATED.

CORNERS TO BE INDEXED

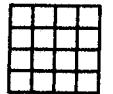
CORNER SECTION TOWNSHIP RANGE
OFFICE FILE NO. _____



NO SCALE

CORNERS TO BE INDEXED

CORNER SECTION TOWNSHIP RANGE
OFFICE FILE NO. _____



NO SCALE

PREVIOUSLY RECORDED IN BOOK _____, PAGE _____
MONUMENT DESCRIPTION AND HOW ESTABLISHED _____

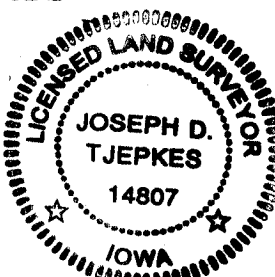
PREVIOUSLY RECORDED IN BOOK _____, PAGE _____
MONUMENT DESCRIPTION AND HOW ESTABLISHED _____

I hereby declare that this plat, survey or report was made by me or under my direct personal supervision and that I am a duly registered Land Surveyor under the laws of the State of Iowa.

Signed: *J.D. Tjepkes 4.05.06*

Joseph D. Tjepkes L.S. Iowa Reg. No. 14807
My Registration Renewal Date is December 31, 2006

SEAL



J.D. TJEKES LS 14807
23428 RIDGE ROAD
ANAMOSA, IOWA, 52205
(319-462-3785)