

Instrument #: 2015-3127
 10/30/2015 10:21:15 AM Total Pages: 1
 ZSC SECTION CORNER CERTIFICATE
 Recording Fee: \$7.00 Transfer Tax: \$0
 Sheri L. Jones, Recorder, Jones County Iowa



Prepared by/Return to: FEHR GRAHAM, 1919 210th Street, Manchester IA 52057 - Ph: (563)927-2060

UNITED STATES PUBLIC LAND SURVEY CORNER CERTIFICATE

OF

Land Survey Monuments situated in Section 16, Township 85 North, Range 3 West of the Fifth Principal Meridian, Jones County, Iowa.

Previously recorded in (1) Bk. 1999, Pg. 3194 (2) Bk. 1999, Pg. 3193 in County Recorder's Office.
 (book, page, document number, etc.)

(Show reason for preparing this certificate, the evidence and detailed procedures used in establishing the corner positions and monumentation found or placed.)

Monument Description and Remarks: (1) E1/4 Corner of Section 16-T85N-R3W:

Section corner information was obtained before and set after concrete overlay project. Found cut "x" and concrete nail in pavement before P.C.C. overlay. Set mag nail in cut "x" in P.C.C. pavement and three new ties.

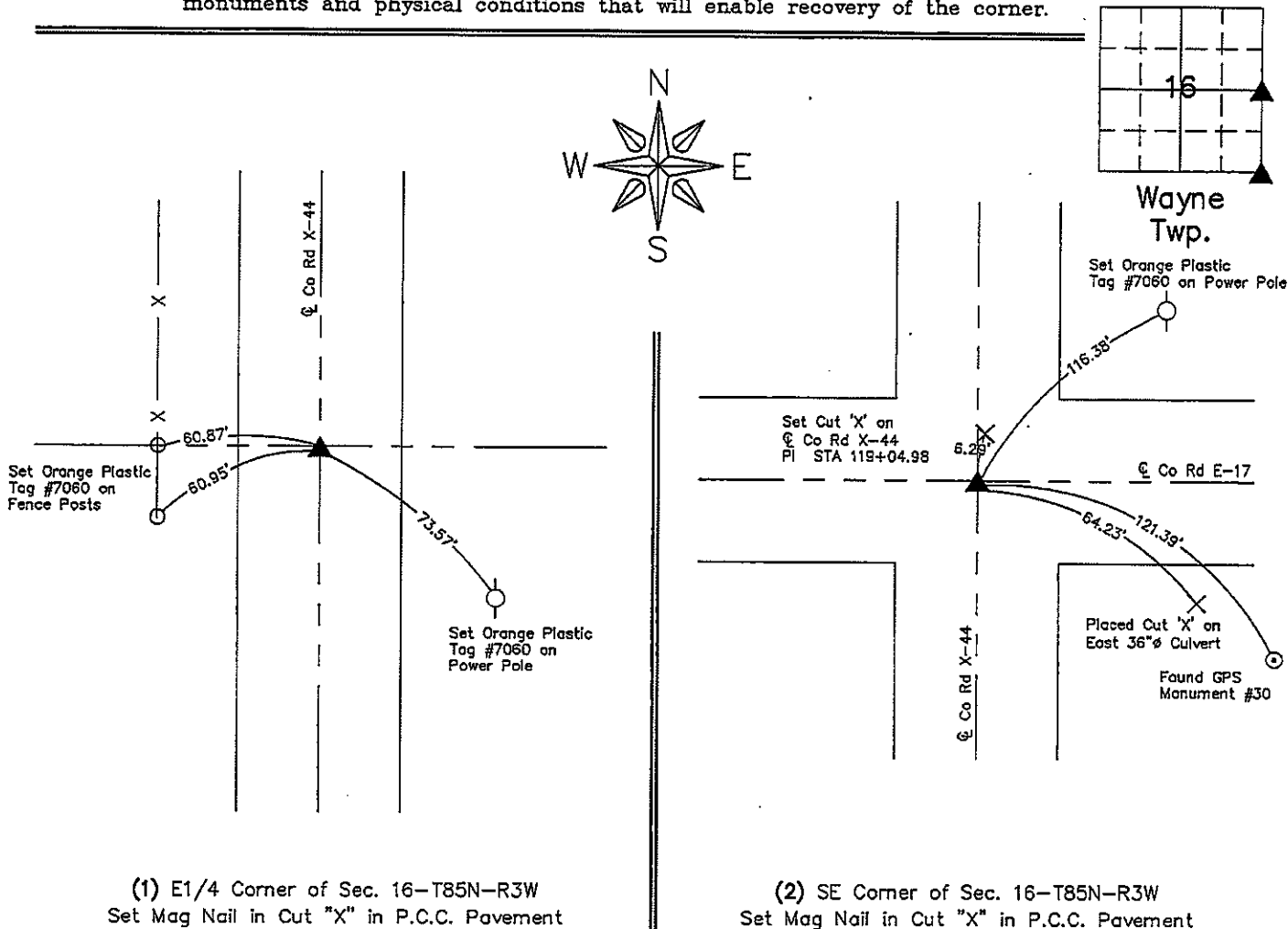
(2) SE Corner of Section 16-T85N-R3W:

Section corner information was obtained before and set after concrete overlay project. Found PK nail before P.C.C. overlay. Set mag nail in cut "x" in P.C.C. pavement and three new ties.

PLAN VIEW

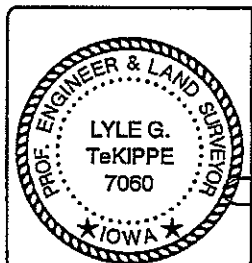
Project Number 15-321

Show a minimum of three reference ties to durable physical objects, relevant monuments and physical conditions that will enable recovery of the corner.



(1) E1/4 Corner of Sec. 16-T85N-R3W
 Set Mag Nail in Cut "X" in P.C.C. Pavement

(2) SE Corner of Sec. 16-T85N-R3W
 Set Mag Nail in Cut "X" in P.C.C. Pavement



I hereby certify that this land surveying document was prepared and the related survey work was performed by me or under my direct personal supervision and that I am a duly licensed Land Surveyor under the laws of the State of Iowa.

Lyle G. TeKippe 10-28-15
 Lyle G. TeKippe, P.E. & L.S. Date
 License Number: 7060
 My license renewal date is December 31, 2016.
 Sheets covered by this seal: This Sheet Only

List Corners to be Indexed			
Corners	Section	Twp.	Range
E1/4	16	85N	3W
SE	16	85N	3W

G:\C30\15\15-321\15-321-LEGAL.dwg

SECTION CORNER CERTIFICATE

OF
 LAND SURVEY MONUMENTS SITUATED IN SECTION 16, TOWNSHIP 85 NORTH,
 RANGE 3 WEST, OF THE FIFTH PRINCIPAL MERIDIAN, JONES, COUNTY, IOWA.

PREVIOUSLY RECORDED IN BOOK _____ AT PAGE _____

FOR RECORDER'S USE

REASON FOR PREPARING CERTIFICATE:

- A) THERE IS NO CERTIFICATE FOR THE CORNER ON FILE WITH THE RECORDER OF THE COUNTY IN WHICH THE CORNER IS LOCATED.
- B) CORNER POSITION DIFFERS FROM THAT SHOWN IN THE PUBLIC RECORDS OF THE COUNTY IN WHICH THE CORNER IS LOCATED.
- C) THE CORNER MONUMENT HAS BEEN REPLACED OR MODIFIED.
- D) THE REFERENCE TIES REFERRED TO IN AN EXISTING PUBLIC RECORD ARE INCORRECT.

1999 3194
 FILED
 RECORDERS OFFICE
 JONES COUNTY IOWA

99 SEP -8 AM 10: 26

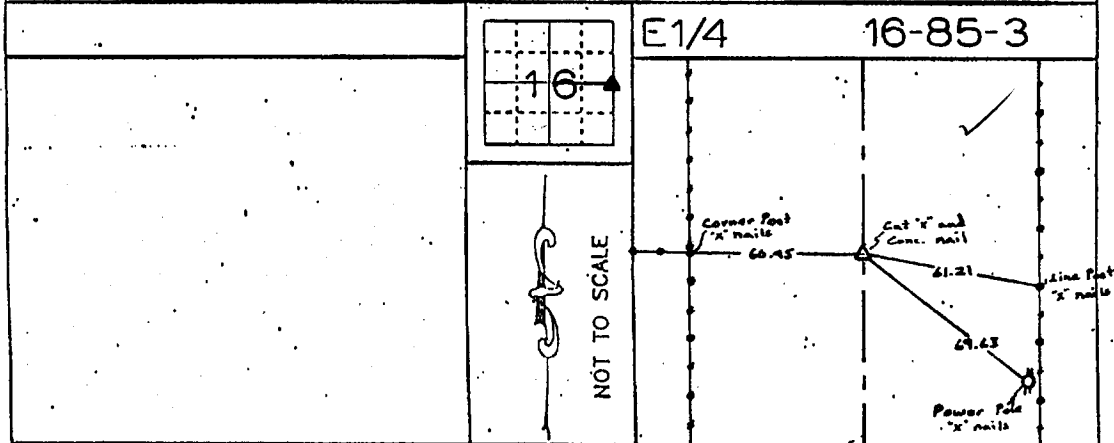
MARIE KRUTZFIELD

RECORDER *6.00 pd*

MONUMENT DESCRIPTION AND REMARKS :

East 1/4 Section 16 - Township 85 North - Range 3 West Cut 'x' and Conc. Nail in Pavement

RECOVERY TIE DRAWING



I, DANIEL J. JOHNSON, CERTIFY THAT THE CORNER LOCATION(S) SHOWN ON THIS RECORD WERE DETERMINED BY ME OR UNDER MY DIRECTION AND CONTROL AND THAT THIS U.S. PUBLIC LAND SURVEY MONUMENT RECORD IS CORRECT AND COMPLETE TO THE BEST OF MY KNOWLEDGE AND BELIEF.

Daniel J. Johnson 9-8-99
 DANIEL J. JOHNSON L.S. NO 11954 DATE



02430101 1-1-00	△ GOVERNMENT CORNER ● PROPERTY CORNER FOUND ○ 1/2" x 3/4" U.S. CAP SET ——— EXISTING FENCE LINE - - - - - PROPERTY LINE	U.S. PUBLIC LAND SURVEY RECORD	HALL AND HALL ENGINEERS, INC. 209 28TH STREET N.E. CEDAR RAPIDS, IOWA 52402 (319) 362-9348
	SHEET FILE PROJECT FILE Jones County C-544	DATE 8/18/99 SCALE None	
JOB NO JSR	REC DJJ	FILE NO 5274	FILE NO 5274

853160-090899