

COPY

Jones County Iowa
 Marie Krutzfield, Recorder
Fee Book 2010 3528

12/16/2010 @1018AM
 ZSC SEC COR CERT
 Book: Page: # Pages: 1
 Total Fees: \$0.00

PREPARED BY

CLARENCE J. WALTON, JONES COUNTY ENGINEER'S OFFICE, 19501 HWY. 64, ANAMOSA, IOWA, 52205 (319) 462-3785

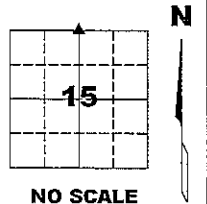
UNITED STATES PUBLIC LAND SURVEY CORNER CERTIFICATE

LAND SURVEY MONUMENTS SITUATED IN SECTION 15, TOWNSHIP 85 NORTH,
 RANGE 3 WEST OF THE 5TH PRINCIPAL MERIDIAN, JONES COUNTY, IOWA.

PROJECT: M-1311

STATE PLANE COORDINATE
 NAD 83 IOWA NORTH
 N 3537094.22
 E 5549991.01

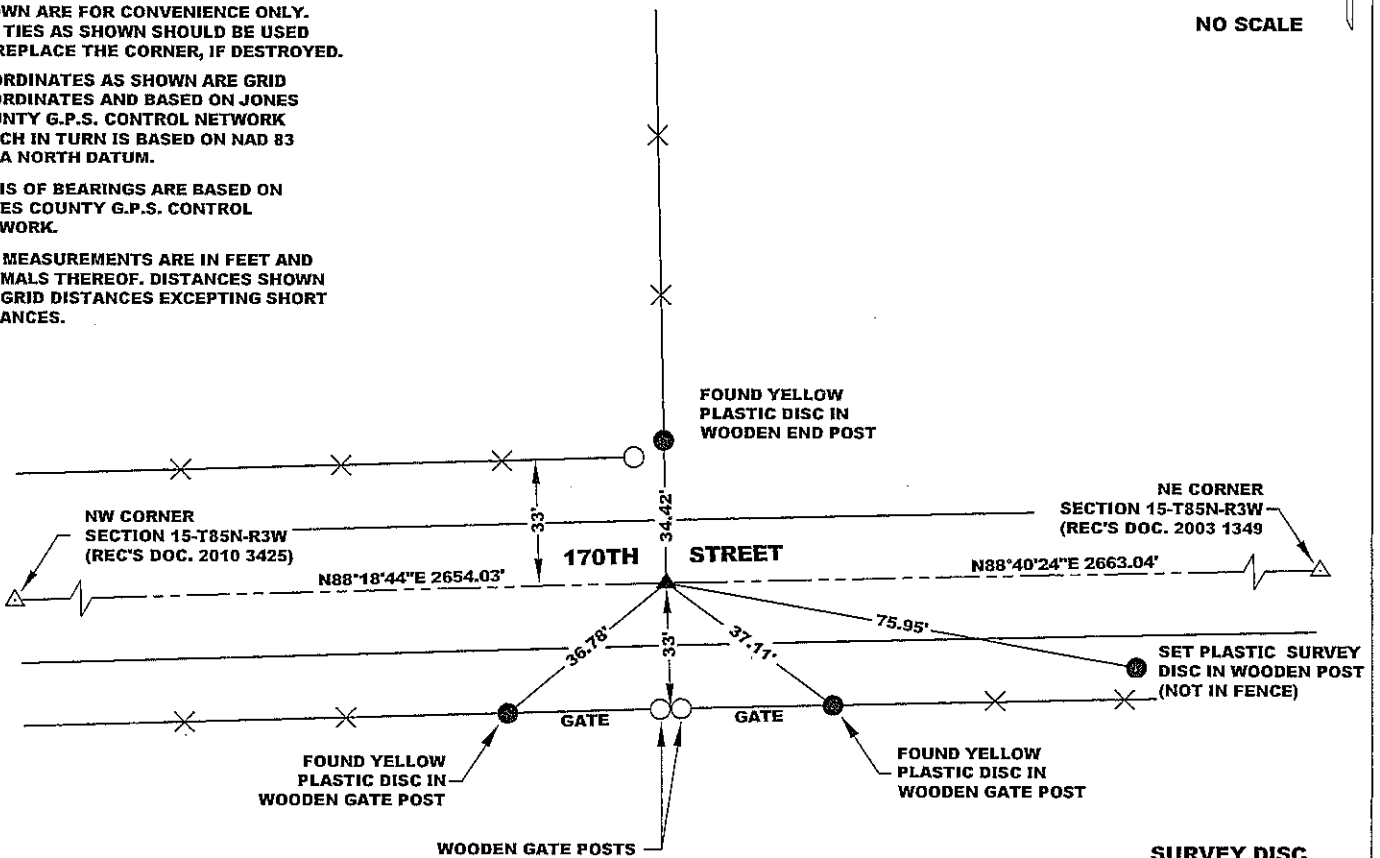
CORNER SECTION TOWNSHIP RANGE
 N 1/4 CORNER 15 T85N R3W



NO SCALE

NOTES:

- 1) THE STATE PLANE COORDINATES AS SHOWN ARE FOR CONVENIENCE ONLY. THE TIES AS SHOWN SHOULD BE USED TO REPLACE THE CORNER, IF DESTROYED.
- 2) COORDINATES AS SHOWN ARE GRID COORDINATES AND BASED ON JONES COUNTY G.P.S. CONTROL NETWORK WHICH IN TURN IS BASED ON NAD 83 IOWA NORTH DATUM.
- 3) BASIS OF BEARINGS ARE BASED ON JONES COUNTY G.P.S. CONTROL NETWORK.
- 4) ALL MEASUREMENTS ARE IN FEET AND DECIMALS THEREOF. DISTANCES SHOWN ARE GRID DISTANCES EXCEPTING SHORT DISTANCES.



SURVEY DISC



PREVIOUSLY RECORDED N/A

MONUMENT DESCRIPTION AND HOW ESTABLISHED NO TIES OF RECORD, FOUND 5/8" REBAR 12" BELOW PRESENT ROAD SURFACE.

FIELD BOOK 437, PAGE 74. DATE OF SURVEY: 12/15/10



I hereby certify that this land surveying document and the related survey work was performed by me or under my direct personal supervision and that I am a duly registered Land Surveyor under the laws of the State of Iowa.

Signed: *Clarence J. Walton* 12/15/10
 Clarence J. Walton, L.S.
 My Registration Renewal Date is December 31, 2011
 Iowa License Number 11310
 Pages or sheets covered by this seal: 1 of 1.

- A. THERE IS NO CERTIFICATE FOR THE CORNER ON FILE WITH THE RECORDER OF THE COUNTY IN WHICH THE CORNER IS LOCATED.
- B. THE CORNER MONUMENT HAS BEEN REPLACED OR MODIFIED.
- C. THE SURVEYOR IN RESPONSIBLE CHARGE OF THE LAND SURVEYING ACCEPTS A CORNER POSITION THAT DIFFERS FROM THAT SHOWN IN THE PUBLIC RECORDS OF THE COUNTY IN WHICH THE CORNER IS LOCATED.
- D. THE REFERENCE TIES REFERRED TO IN AN EXISTING PUBLIC RECORD NO LONGER EXIST.

CORNERS TO BE INDEXED

CORNER	SECTION	TOWNSHIP	RANGE
N 1/4 CORNER	15	85N	3W
S 1/4 CORNER	10	85N	3W

JONES COUNTY ENGINEER'S OFFICE



19501 HWY. 64, ANAMOSA, IOWA 52205
 (319) 462-3785