

Instrument #: 2015-3126  
 10/30/2015 10:21:15 AM Total Pages: 1  
 ZSC SECTION CORNER CERTIFICATE  
 Recording Fee: \$7.00 Transfer Tax: \$0  
 Sheri L. Jones, Recorder, Jones County Iowa



Prepared by/Return to: FEHR GRAHAM, 1919 210th Street, Manchester IA 52057 - Ph: (563)927-2060

UNITED STATES PUBLIC LAND SURVEY CORNER CERTIFICATE

OF

Land Survey Monuments situated in Section 9, Township 85 North, Range 3 West of the Fifth Principal Meridian, Jones County, Iowa.

Previously recorded in (1) Bk. 2010, Pg. 3410 (2) Bk. 2010, Pg. 3425 in County Recorder's Office.  
 (book, page, document number, etc.)

(Show reason for preparing this certificate, the evidence and detailed procedures used in establishing the corner positions and monumentation found or placed.)

Monument Description and Remarks: (1) E1/4 Corner of Section 9-T85N-R3W:

Section corner information was obtained before and set after concrete overlay project. Found "x" cut in P.C.C. pavement before P.C.C. overlay. Set mag nail in cut "x" in P.C.C. pavement and three new ties.

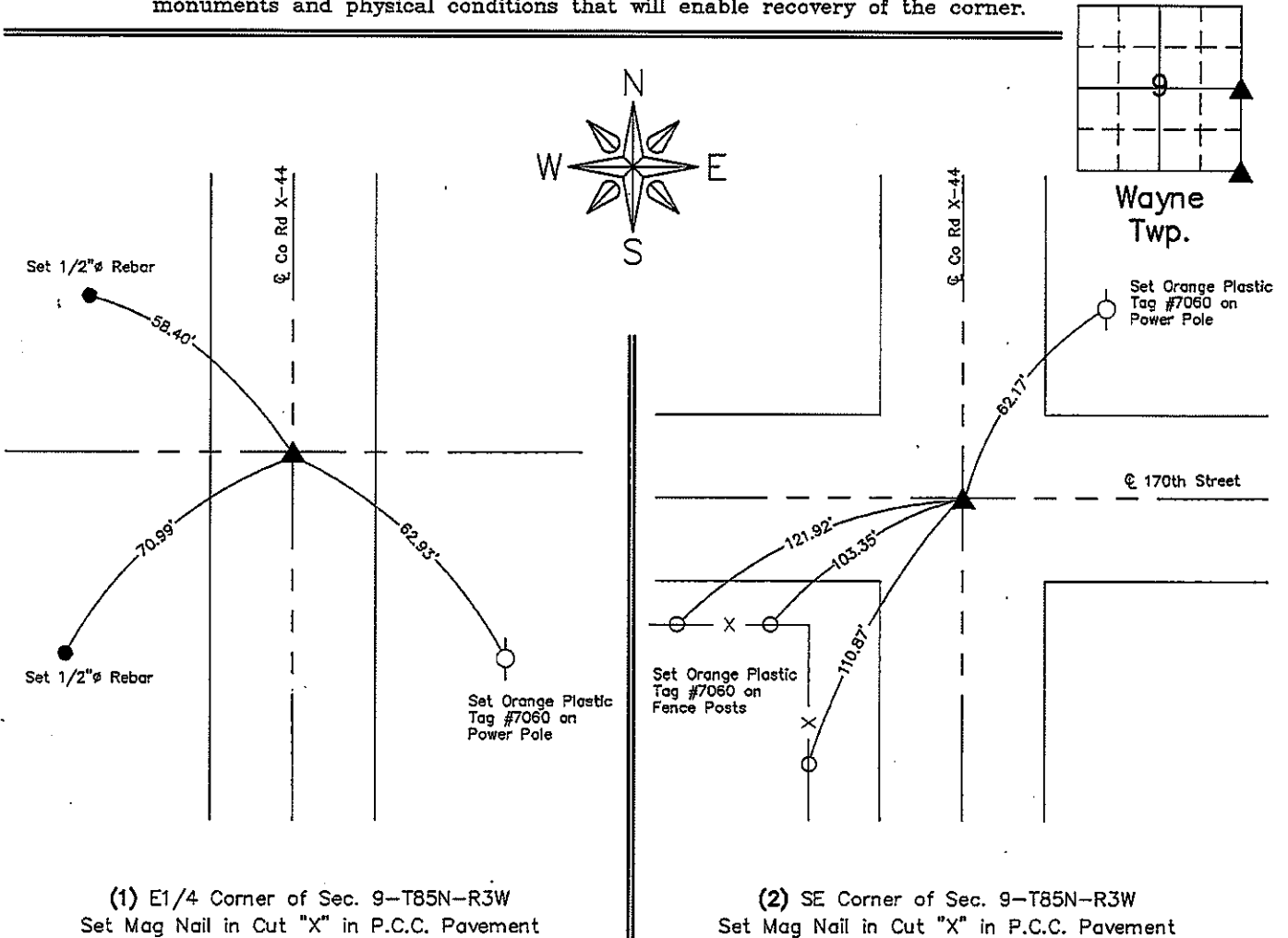
(2) SE Corner of Section 9-T85N-R3W:

Section corner information was obtained before and set after concrete overlay project. Found 5/8" x 24" rebar with orange plastic cap #11310 before P.C.C. overlay. Set mag nail in cut "x" in P.C.C. pavement and four new ties.

PLAN VIEW

Project Number 15-321

Show a minimum of three reference ties to durable physical objects, relevant monuments and physical conditions that will enable recovery of the corner.



PROF. ENGINEER & LAND SURVEYOR

LYLE G.  
TeKIPPE  
7060

★ IOWA ★

I hereby certify that this land surveying document was prepared and the related survey work was performed by me or under my direct personal supervision and that I am a duly licensed Land Surveyor under the laws of the State of Iowa.

*Lyle G. TeKippe* 10-28-15  
 Lyle G. TeKippe, P.E. & P.L.S. Date  
 License Number: 7060  
 My license renewal date is December 31, 2016.  
 Sheets covered by this seal: This Sheet Only

List Corners to be Indexed			
Corners	Section	Twp.	Range
E1/4	9	85N	3W.
SE	9	85N	3W

G:\C3D\15\15-321\15-321-LEGAL.dwg

COPY

Jones County, Iowa  
 Marie Krutzfield, Recorder  
 Fee Book 2010 3425

12/09/2010 @0147PM  
 ZSC SEC COR CERT  
 Book: Page: # Pages: 1  
 Total Fees: \$0.00

PREPARED BY  
 CLARENCE J. WALTON, JONES COUNTY ENGINEER'S OFFICE, 19501 HWY. 64, ANAMOSA, IOWA, 52205 (319) 462-3785

# UNITED STATES PUBLIC LAND SURVEY CORNER CERTIFICATE

LAND SURVEY MONUMENTS SITUATED IN SECTION 16, TOWNSHIP 85 NORTH,  
 RANGE 3 WEST OF THE 5TH PRINCIPAL MERIDIAN, JONES COUNTY, IOWA.

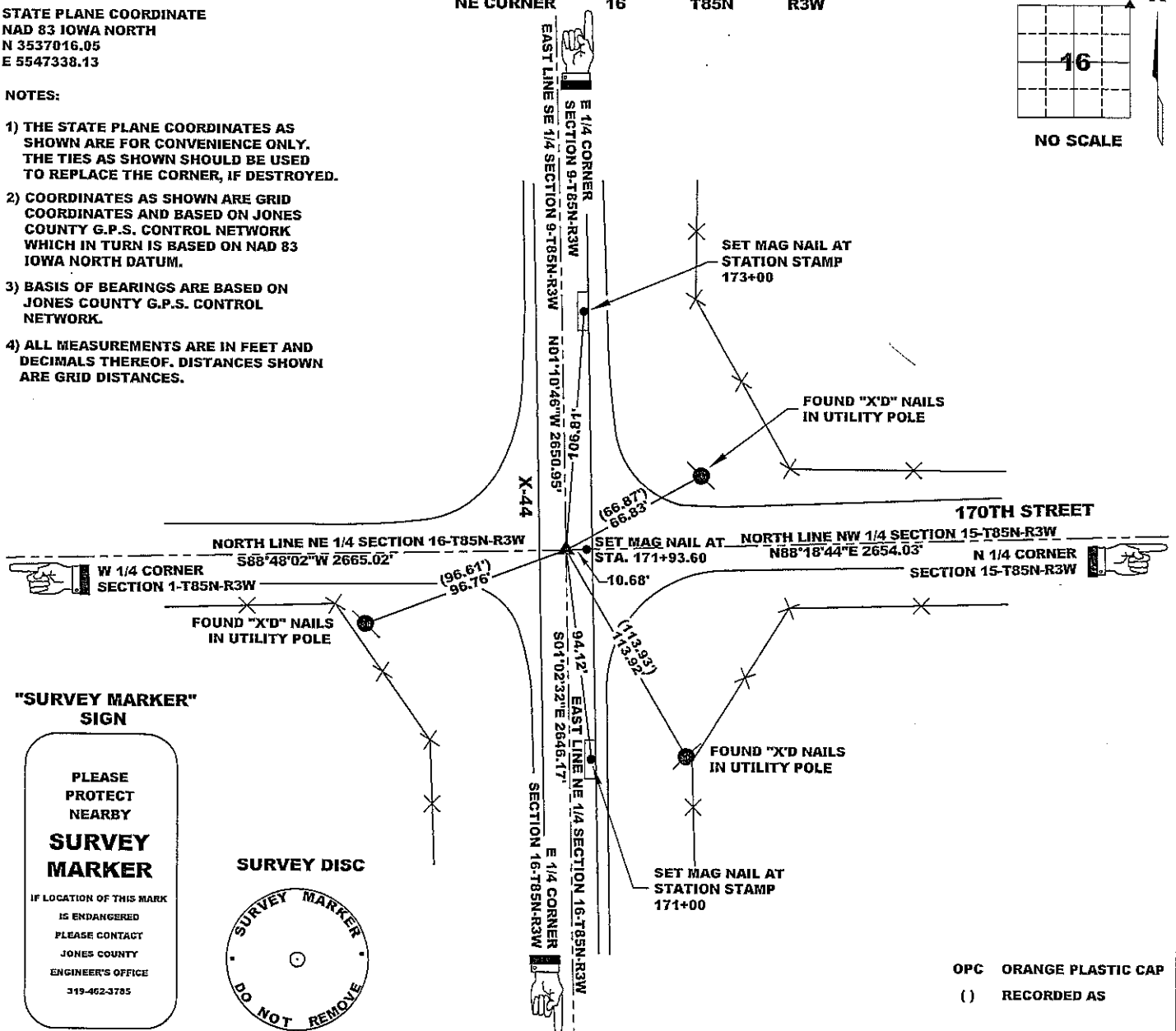
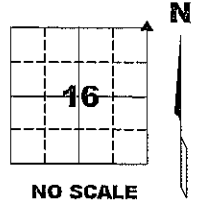
PROJECT: M-1311

STATE PLANE COORDINATE  
 NAD 83 IOWA NORTH  
 N 3537016.05  
 E 5547338.13

NOTES:

- 1) THE STATE PLANE COORDINATES AS SHOWN ARE FOR CONVENIENCE ONLY. THE TIES AS SHOWN SHOULD BE USED TO REPLACE THE CORNER, IF DESTROYED.
- 2) COORDINATES AS SHOWN ARE GRID COORDINATES AND BASED ON JONES COUNTY G.P.S. CONTROL NETWORK WHICH IN TURN IS BASED ON NAD 83 IOWA NORTH DATUM.
- 3) BASIS OF BEARINGS ARE BASED ON JONES COUNTY G.P.S. CONTROL NETWORK.
- 4) ALL MEASUREMENTS ARE IN FEET AND DECIMALS THEREOF. DISTANCES SHOWN ARE GRID DISTANCES.

CORNER SECTION TOWNSHIP RANGE  
 NE CORNER 16 T85N R3W



PREVIOUSLY RECORDED IN RECORDER'S DOCUMENT 2005 0258  
 MONUMENT DESCRIPTION AND HOW ESTABLISHED PAVEMENT PATCHING REMOVED CORNER MARKER. SET 5/8"X24" REBAR WITH ORANGE PLASTIC PLASTIC CAP #11310 IN A PAVING BLOWOUT USING BEST FIT OF RECORDED TIES. SET MAG NAILS IN PAVEMENT AS SHOWN FOR HANDINESS PURPOSES.  
 FIELD BOOK 437, PAGE 72. DATE OF SURVEY: 11/9/10



I hereby certify that this land surveying document and the related survey work was performed by me or under my direct personal supervision and that I am a duly registered Land Surveyor under the laws of the State of Iowa.  
 Signed: *Clarence J. Walton* 11/9/10  
 Clarence J. Walton, L.S.  
 My Registration Renewal Date is December 31, 2011  
 Iowa License Number 11310  
 Pages or sheets covered by this seal: 1 of 1.

- A. THERE IS NO CERTIFICATE FOR THE CORNER ON FILE WITH THE RECORDER OF THE COUNTY IN WHICH THE CORNER IS LOCATED.
- B. THE CORNER MONUMENT HAS BEEN REPLACED OR MODIFIED.
- C. THE SURVEYOR IN RESPONSIBLE CHARGE OF THE LAND SURVEYING ACCEPTS A CORNER POSITION THAT DIFFERS FROM THAT SHOWN IN THE PUBLIC RECORDS OF THE COUNTY IN WHICH THE CORNER IS LOCATED.
- D. THE REFERENCE TIES REFERRED TO IN AN EXISTING PUBLIC RECORD NO LONGER EXIST.

CORNERS TO BE INDEXED			
CORNER	SECTION	TOWNSHIP	RANGE
NE CORNER	16	85N	3W
SE CORNER	9	85N	3W
SW CORNER	10	85N	3W
NW CORNER	15	85N	3W

**JONES COUNTY ENGINEER'S OFFICE**

19501 HWY. 64, ANAMOSA, IOWA 52205  
 (319) 462-3785

2005 0258

FILED  
RECORDERS OFFICE  
JONES COUNTY IOWA

05 JAN 21 AM 10:02

MARIE KRUTZFIELD  
RECORDER 7.00 pd

PREPARED BY HALL & HALL ENGINEERS, INC. 209 29TH STREET N.E. CEDAR RAPIDS, IOWA 52402 (319) 362-9548

SECTION CORNER CERTIFICATE

OF

LAND SURVEY MONUMENTS SITUATED IN SECTION 16, TOWNSHIP 85 NORTH,  
RANGE 3 WEST, OF THE FIFTH PRINCIPAL MERIDIAN, JONES COUNTY, IOWA.

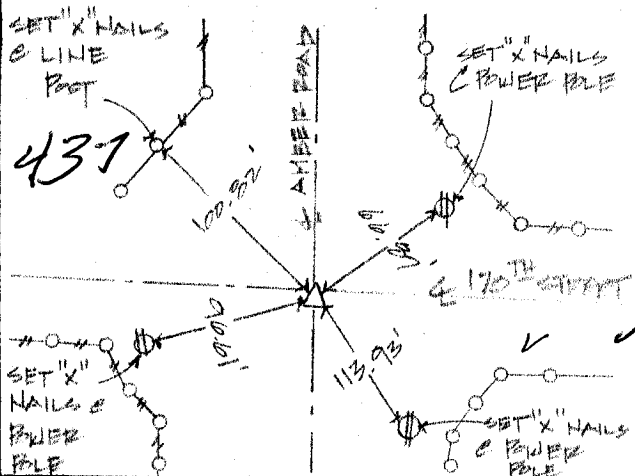
PREVIOUSLY RECORDED IN BOOK \_\_\_\_\_ AT PAGE \_\_\_\_\_

MONUMENT DESCRIPTION AND REMARKS:

NE CORNER OF SECTION 16  
N 1/4 CORNER OF SECTION 16, FOUND 1/2" IRON PIN.

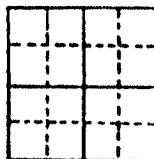
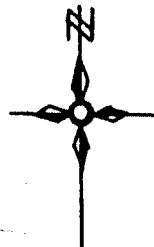
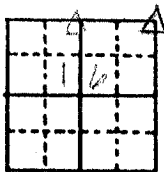
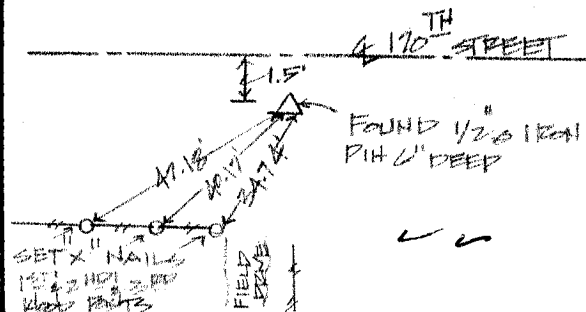
RECOVERY TIE DRAWING

NE CORNER OF SECTION 16



N 1/4 CORNER OF SECTION 16

436  
85316e-012005.tif



85316e-012005.tif

I hereby certify that this land surveying document was prepared and the related survey work was performed by me or under my direct personal supervision and that I am a duly licensed Land Surveyor under the laws of the State of Iowa.

Signed: Daniel J. Johnson Date: 1-20-05

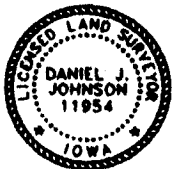
Daniel J. Johnson, L.S. 11954  
My license renewal date is December 31, 2006

Pages or sheets covered by this seal:  
(Entire submission unless specified here)

1

REASON FOR PREPARING CERTIFICATE:

- A) THERE IS NO CERTIFICATE FOR THE CORNER ON FILE WITH THE RECORDER OF THE COUNTY IN WHICH THE CORNER IS LOCATED.
- B) CORNER POSITION DIFFERS FROM THAT SHOWN IN THE PUBLIC RECORDS OF THE COUNTY IN WHICH THE CORNER IS LOCATED.
- C) THE CORNER MONUMENT HAS BEEN REPLACED OR MODIFIED.
- D) THE REFERENCE TIES REFERRED TO IN AN EXISTING PUBLIC RECORD ARE INCORRECT.



△ GOVERNMENT CORNER  
● PROPERTY CORNER FOUND  
○ 1/2" x 3/4" W/ LS CAP SET  
- - - EXISTING FENCE LINE  
— — — PROPERTY LINE

SHEET TITLE: US PUBLIC LAND SURVEY RECORD

PROJECT TITLE: JONES COUNTY C-544 (W/ADHD)



HALL AND HALL ENGINEERS, INC.

209 29TH STREET N.E.  
CEDAR RAPIDS, IOWA 52402  
(319) 362-9548

NWD T.M.P

K.C. D.V.D

A.P.R. B.V.D

D.A.T. 2/4/99

SCALE: H.T.S

FILE: NONE

PROJECT: J

# SECTION CORNER CERTIFICATE

OF  
 LAND SURVEY MONUMENTS SITUATED IN SECTION 16, TOWNSHIP 85 NORTH,  
 RANGE 3 WEST, OF THE FIFTH PRINCIPAL MERIDIAN, JONES, COUNTY, IOWA.

PREVIOUSLY RECORDED IN BOOK \_\_\_\_\_ AT PAGE \_\_\_\_\_

FOR RECORDER'S USE

**REASON FOR PREPARING CERTIFICATE:**

- A) THERE IS NO CERTIFICATE FOR THE CORNER ON FILE WITH THE RECORDER OF THE COUNTY IN WHICH THE CORNER IS LOCATED.
- B) CORNER POSITION DIFFERS FROM THAT SHOWN IN THE PUBLIC RECORDS OF THE COUNTY IN WHICH THE CORNER IS LOCATED.
- C) THE CORNER MONUMENT HAS BEEN REPLACED OR MODIFIED.
- D) THE REFERENCE TIES REFERRED TO IN AN EXISTING PUBLIC RECORD ARE INCORRECT.

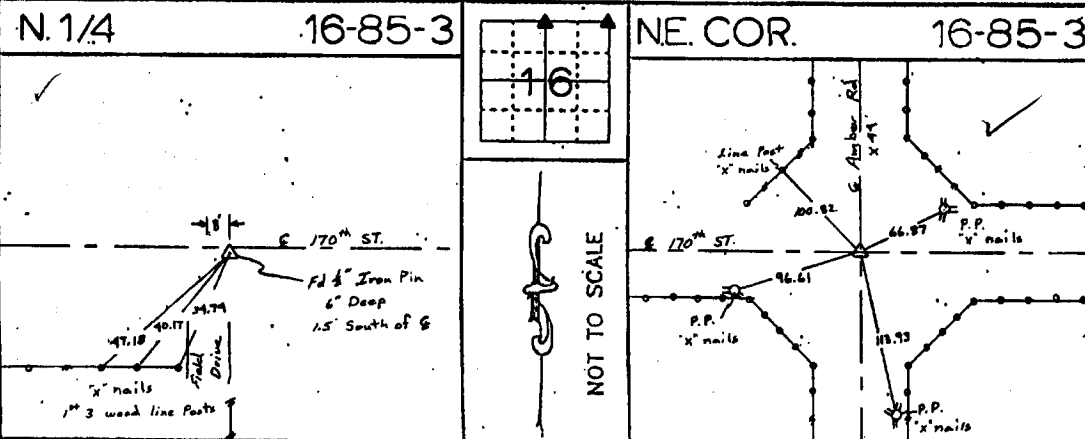
**19993192**  
 FILED  
 RECORDERS OFFICE  
 JONES COUNTY IOWA  
 99 SEP -8 AM 10:24  
 MARIE KRUTZFIELD  
 RECORDER *6:00pd*

**MONUMENT DESCRIPTION AND REMARKS:**

*North 1/4 Section 16 - Township 85 North - Range 3 West Found 1/2" Iron Pin 6" Deep  
 15' South of E*

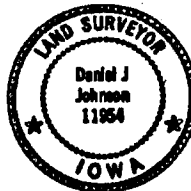
*Northeast Corner Section 16 - Township 85 North - Range 3 West Found P.K. nail 6" E*

## RECOVERY TIE DRAWING



I, DANIEL J. JOHNSON, CERTIFY THAT THE CORNER LOCATION(S) SHOWN ON THIS RECORD WERE DETERMINED BY ME OR UNDER MY DIRECTION AND CONTROL AND THAT THIS U.S. PUBLIC LAND SURVEY MONUMENT RECORD IS CORRECT AND COMPLETE TO THE BEST OF MY KNOWLEDGE AND BELIEF.

*Daniel J. Johnson* 9-9-99  
 DANIEL J. JOHNSON L.S. NO 11954 DATE



<p><b>LEGEND</b></p> <p>○ GOVERNMENT CORNER          ○ 3/4" TC PIN SET          --- CENTERLINE          --- COSTING FENCE LINE          - - - - - A.O.X. LINE</p>	<p><b>PROJECT NAME:</b> U.S. PUBLIC LAND SURVEY RECORD</p> <p><b>PURPOSE:</b> Jones Cty Rd. Project C-599</p>	<p><b>ENGINEER:</b> HALL AND HALL ENGINEERS, INC.          209 29TH STREET DRIVE N.E.          CEDAR RAPIDS, IOWA 52402          319-362-9540</p>
<p>DW: JSR</p>	<p>CHK: DJT</p>	<p>APP: [Signature]</p>
<p>DATE: 5/20/94</p>	<p>SCALE: None</p>	<p>FIG. NO: 5294</p>

*85316c-090899  
 85316e-090899*