

COPY

Jones County Marie Krutzfield Recorder
 Fee Book 2012 2890
 10/03/2012 @1148AM # Pages 1
 ZSC SEC COR CERT
 Total Fees: \$0.00

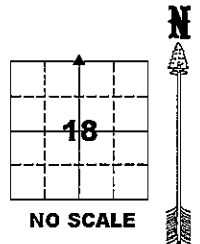
PREPARED BY
 CLARENCE J. WALTON, JONES COUNTY ENGINEER'S OFFICE, 19501 HWY. 64, ANAMOSA, IOWA, 52205 (319) 462-3785

UNITED STATES PUBLIC LAND
 SURVEY CORNER CERTIFICATE

LAND SURVEY MONUMENTS SITUATED IN SECTION 18, TOWNSHIP 85 NORTH,
 RANGE 3 WEST OF THE 5TH PRINCIPAL MERIDIAN, JONES COUNTY, IOWA.

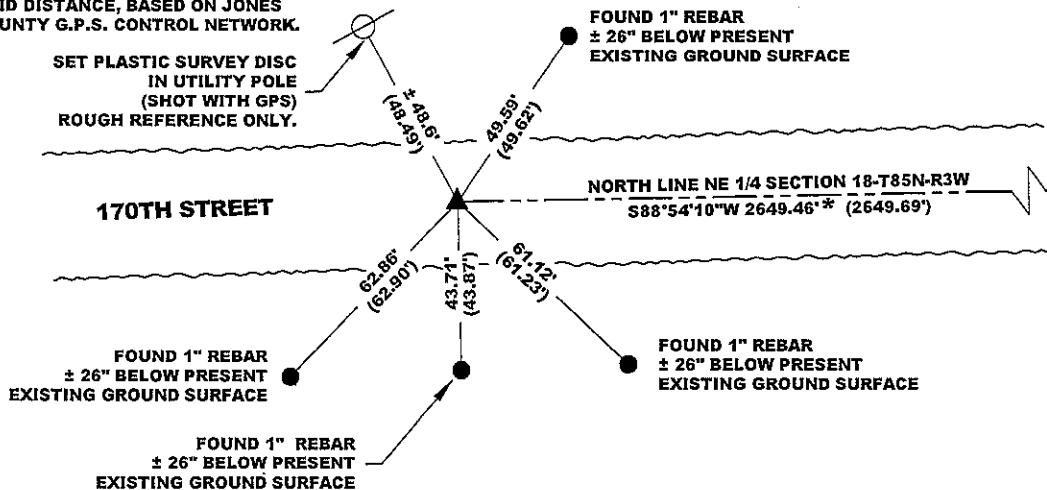
NE CORNER SECTION 18-T85N-R3W
 STATE PLANE COORDINATE (NAD 83 IOWA NORTH)
 N 3536765.46
 E 5534042.90

CORNER SECTION TOWNSHIP RANGE
 N 1/4 18 T85N R3W



NOTES:

- 1) THE STATE PLANE COORDINATES AS SHOWN ARE FOR CONVENIENCE ONLY. THE TIES AS SHOWN SHOULD BE USED TO REPLACE THE CORNER, IF DESTROYED.
- 2) COORDINATES AS SHOWN ARE GRID COORDINATES AND BASED ON JONES COUNTY G.P.S. CONTROL NETWORK WHICH IN TURN IS BASED ON NAD 83 IOWA NORTH DATUM.
- 3) ALL MEASUREMENTS ARE IN FEET AND DECIMALS THEREOF.
- 4) * GRID DISTANCE, BASED ON JONES COUNTY G.P.S. CONTROL NETWORK.



NE CORNER SECTION 18-T85N-R3W
 RECORDER'S DOCUMENT 2012 2717

"SURVEY MARKER" SIGN

PLEASE PROTECT NEARBY
SURVEY MARKER
 IF LOCATION OF THIS MARK IS ENDANGERED PLEASE CONTACT JONES COUNTY ENGINEER'S OFFICE 319-462-3785

LEGEND

- YPC YELLOW PLASTIC CAP
- OPC ORANGE PLASTIC CAP
- () RECORDED AS

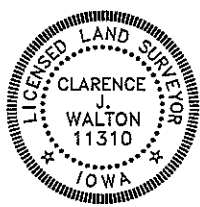
SURVEY DISC



PAGE 1 of 1

PREVIOUSLY RECORDED IN RECORDER'S DOCUMENT RECORDER'S DOCUMENT 1999 0331 AND BOOK 426, PAGE 24
 MONUMENT DESCRIPTION AND HOW ESTABLISHED FOUND 1" REBAR 6" BELOW PRESENT ROAD SURFACE IN CENTERLINE OF ROAD BED AS PER ABOVE REFERENCED CORNER CERTIFICATES. THE REASON FOR FILING THIS CERTIFICATE IS TO PROVIDE STATE PLANE COORDINATES TO THIS CORNER.

FIELD BOOK: NONE, DATA COLLECTOR DATE OF SURVEY: 9/18/12



I hereby certify that this land surveying document and the related survey work was performed by me or under my direct personal supervision and that I am a duly registered Land Surveyor under the laws of the State of Iowa.

Signed: *Clarence J. Walton* 10/2/12

Clarence J. Walton, L.S.
 My Registration Renewal Date is December 31, 2013
 Iowa License Number 11310
 Pages or sheets covered by this seal: 1 of 1

- A. THERE IS NO CERTIFICATE FOR THE CORNER ON FILE WITH THE RECORDER OF THE COUNTY IN WHICH THE CORNER IS LOCATED.
- B. THE CORNER MONUMENT HAS BEEN REPLACED OR MODIFIED.
- C. THE SURVEYOR IN RESPONSIBLE CHARGE OF THE LAND SURVEYING ACCEPTS A CORNER POSITION THAT DIFFERS FROM THAT SHOWN IN THE PUBLIC RECORDS OF THE COUNTY IN WHICH THE CORNER IS LOCATED.
- D. THE REFERENCE TIES REFERRED TO IN AN EXISTING PUBLIC RECORD NO LONGER EXIST.
- E. ADDED ADDITIONAL INFORMATION TO EXISTING TIES.

CORNERS TO BE INDEXED

CORNER	SECTION	TOWNSHIP	RANGE
N 1/4	18	85N	3W
S 1/4	7	85N	3W

JONES COUNTY ENGINEER'S OFFICE



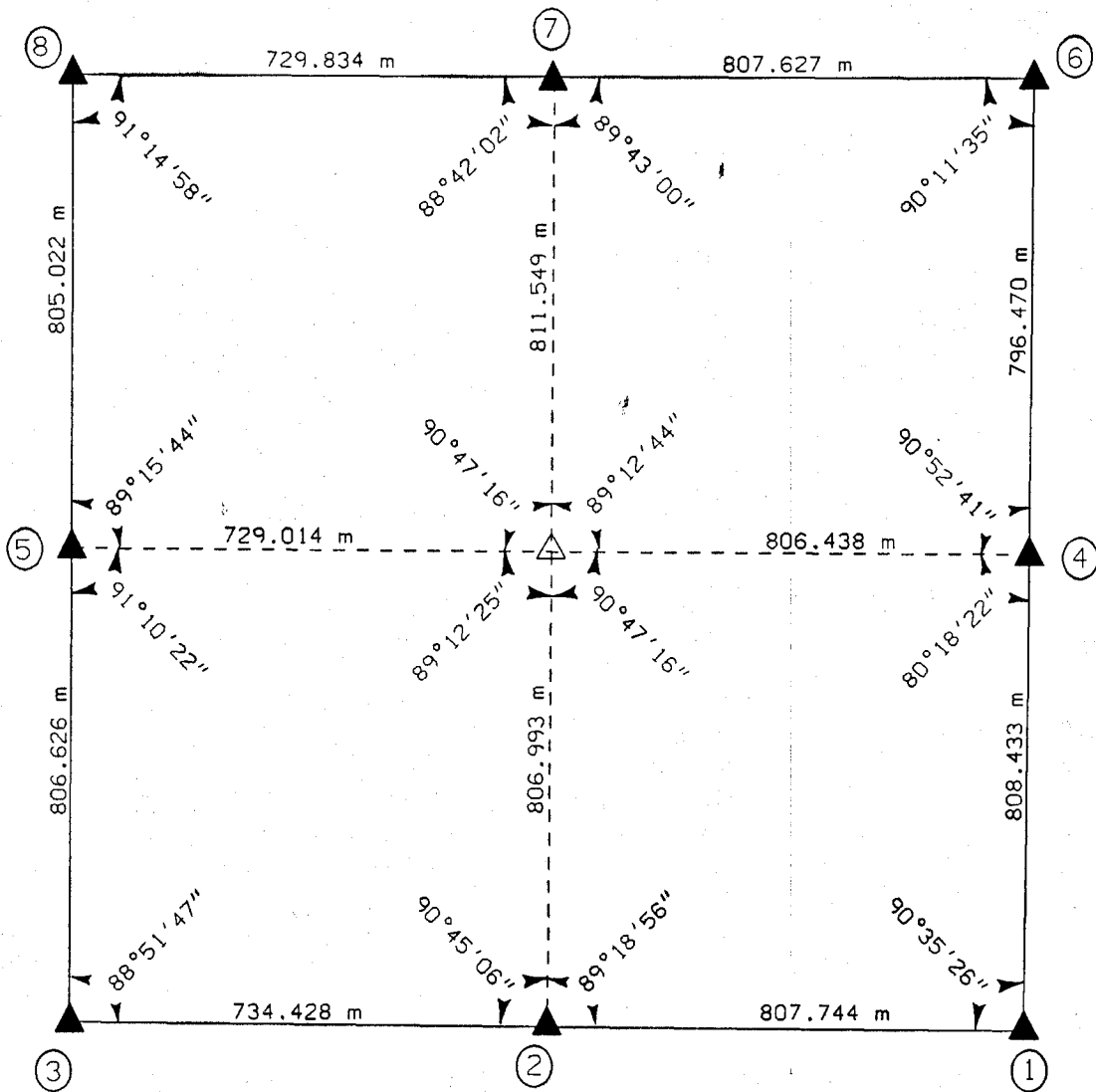
19501 HWY. 64, ANAMOSA, IOWA 52205
 (319) 462-3785

UNITED STATES PUBLIC SECTION CORNER CERTIFICATION
AND LAND CORNER SURVEY
SECTION 18 T-85N R-3W

MADE FOR
IOWA DEPARTMENT OF TRANSPORTATION FOR THE PURPOSE OF
RIGHT OF WAY DESCRIPTIONS ON PRIMARY ROAD No. U.S. 151

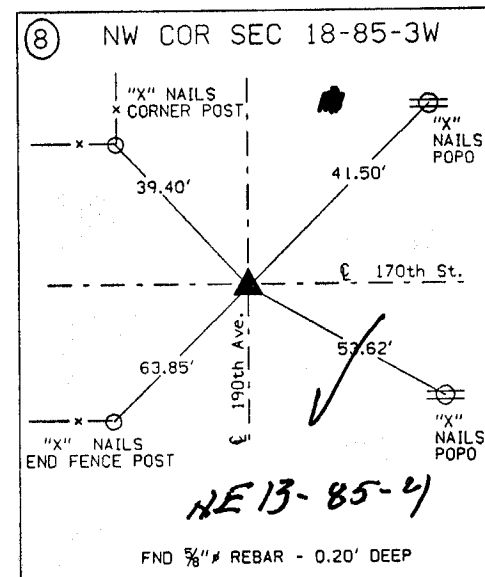
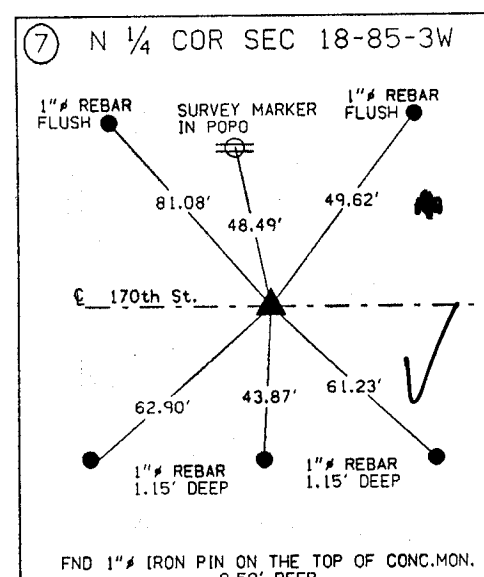
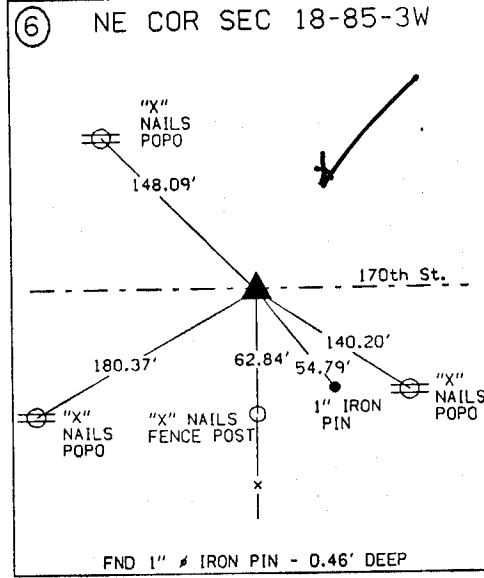
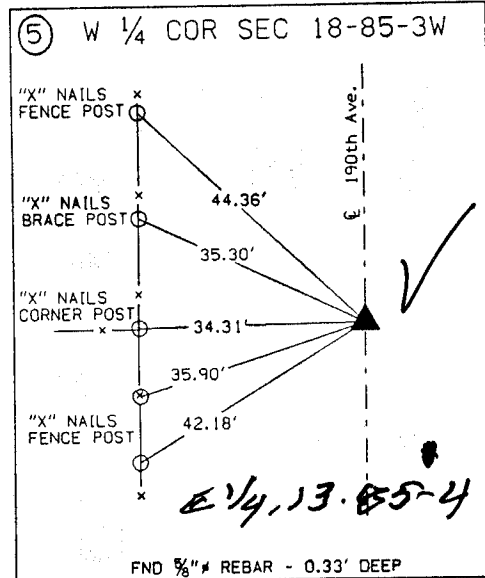
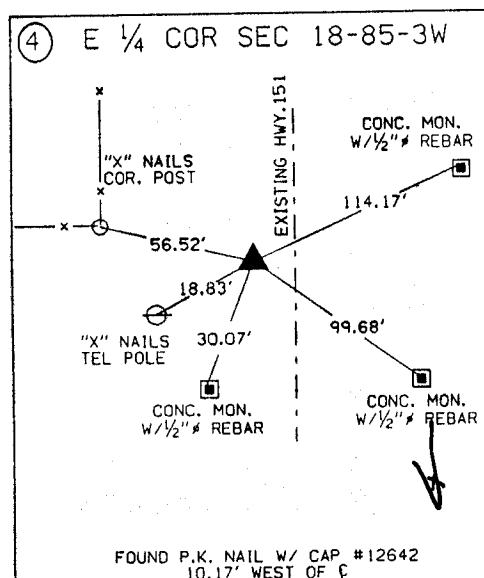
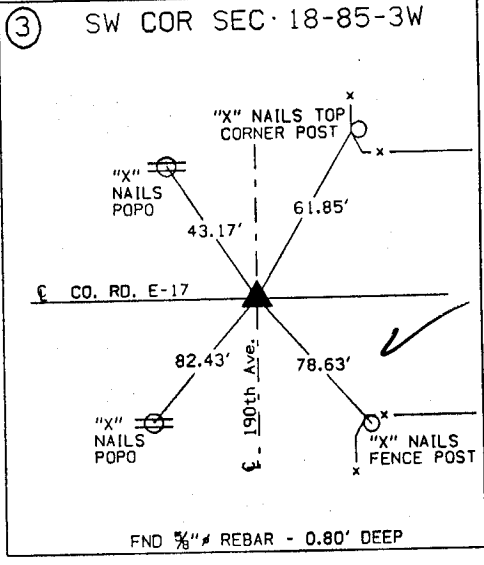
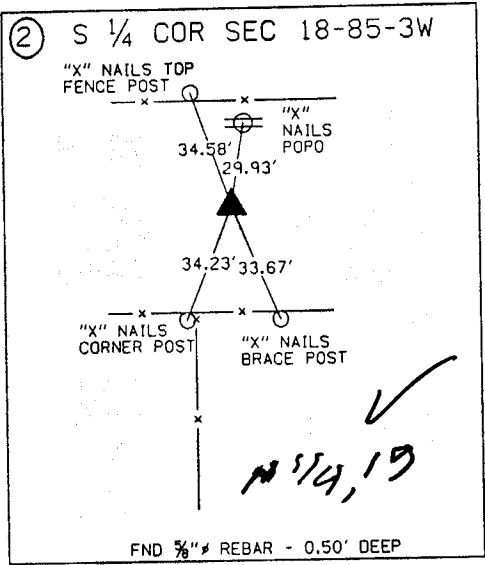
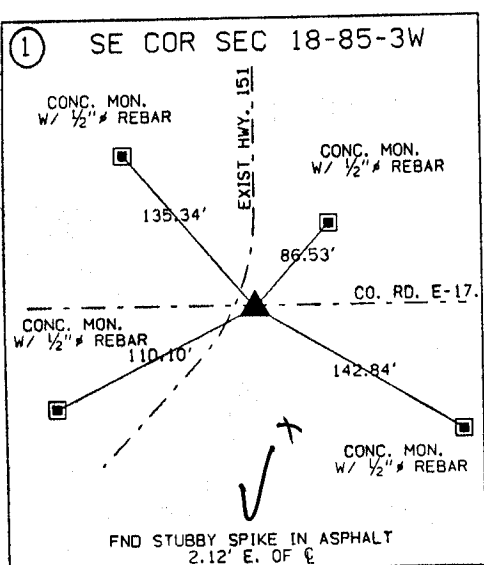
MADE BY
MICHAEL R. FAGLE R.L.S. No. 8505
JONES COUNTY, IOWA NHS-151-3(84)--19-57
APRIL 1998 THRU OCTOBER 1998

ALL DISTANCES WERE CAREFULLY MEASURED AND MAY NOT AGREE WITH ROAD SURVEY STATIONING



	I hereby certify that this Land Surveying document was prepared by me or under my direct personal supervision and that I am a duly Licensed Land Surveyor under the laws of the State of Iowa.
	<i>Michael R. Fagle</i> 1-21-99 MICHAEL R. FAGLE Date License number 8505 My license renewal date is December 31, 2000 Pages or sheets covered by this seal: Two (2)

UNITED STATES PUBLIC SECTION CORNER CERTIFICATION
AND LAND CORNER SURVEY
SECTION 18 T-85N R-3W



ALL TIES ARE ENGLISH UNLESS OTHERWISE NOTED

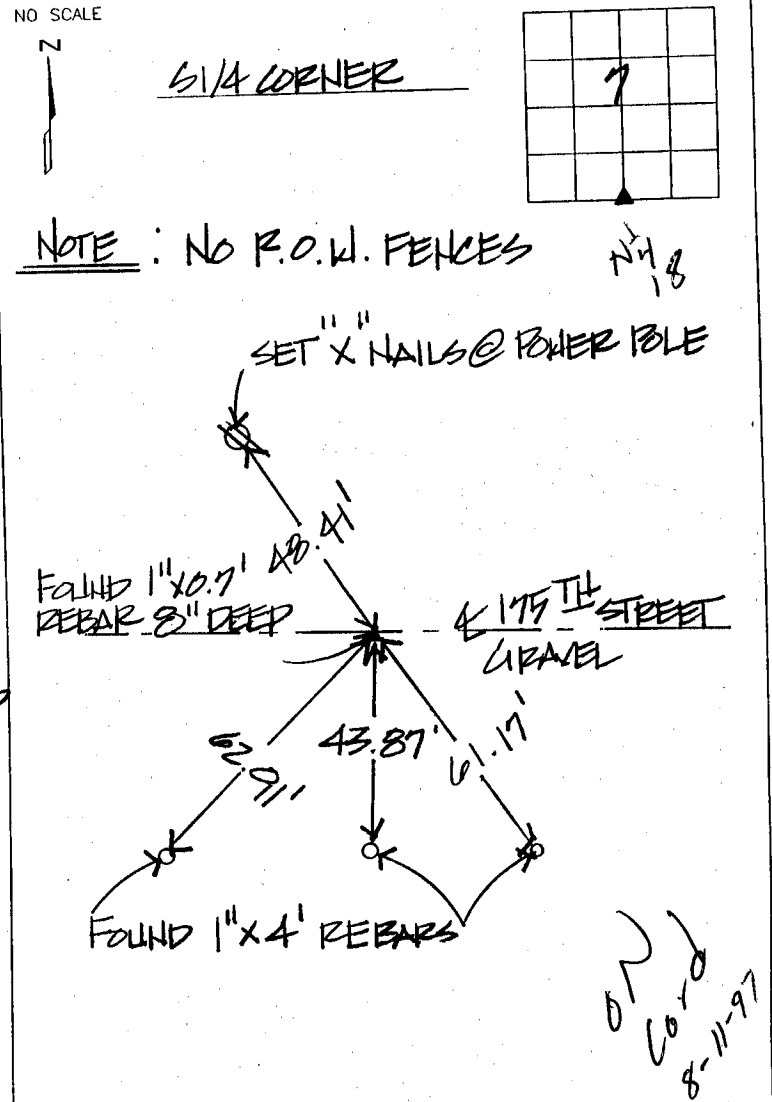
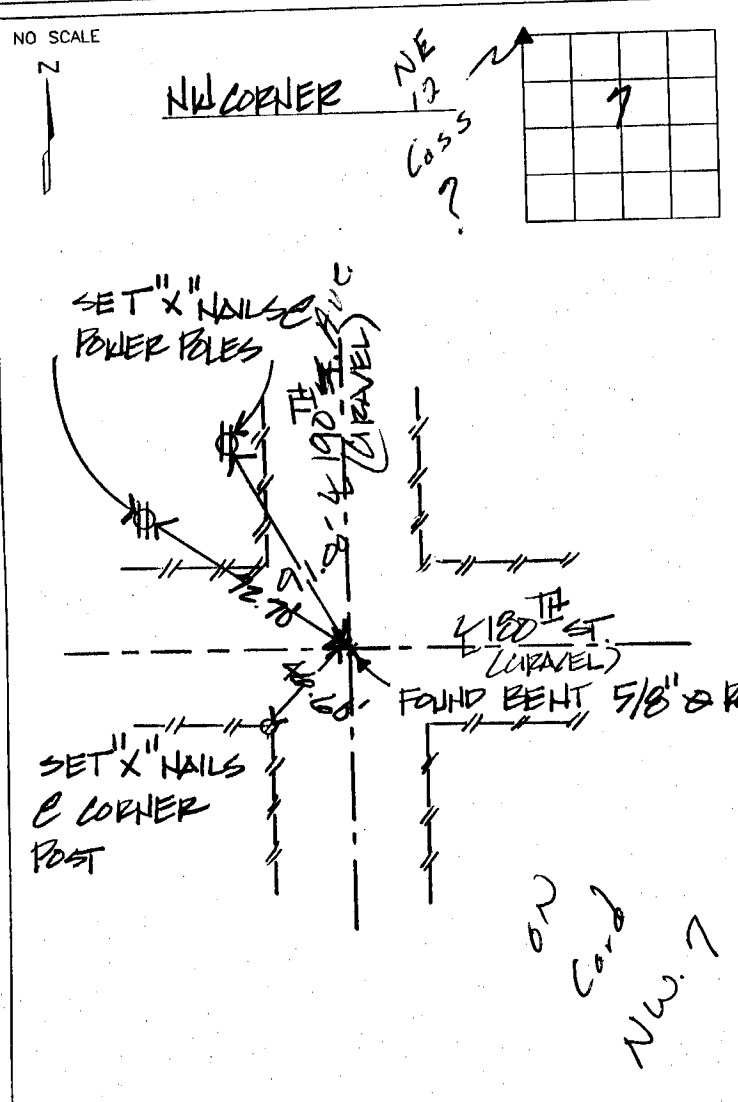
3745
 FILED
 RECORDERS OFFICE
 JONES COUNTY IOWA
 97 MAY 30 AM 10:35
 BOOK 426 PAGE 24
 LINDA J. BENDIXEN
 RECORDER *b.d.p.*

BRAIN ENGINEERING, INC., 777 10TH STREET, MARION, IOWA 52302 PH. (319) 373-1318

UNITED STATES PUBLIC LAND SURVEY CORNER CERTIFICATE

Wayne

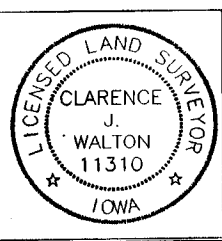
LAND SURVEY MONUMENTS SITUATED IN SECTION 7, TOWNSHIP 85 NORTH
 RANGE 3 WEST OF THE 5TH P.M., JONES COUNTY, IOWA.



NOTE: NO P.O.W. FENCES *NH 8*

PREVIOUSLY RECORDED IN BOOK _____ PAGE _____
 MONUMENT DESCRIPTION AND HOW ESTABLISHED FOUND
5/8\"

PREVIOUSLY RECORDED IN BOOK 314 PAGE 37
 MONUMENT DESCRIPTION AND HOW ESTABLISHED FOUND
1\"



I hereby certify that this land surveying document and the related survey work was performed by me or under my direct personal supervision and that I am a duly licensed Land Surveyor under the laws of the State of Iowa.
 Signed Clarence J. Walton Date 5/29/97
 Clarence J. Walton, L.S.
 My License Renewal Date is December 31, 1997
 License Number 11310
 Pages or sheets covered by this seal: 1 of 1

CORNER	SECTION	TOWNSHIP	RANGE
NW	7	85	3
S 1/4	7	85	3

BRAIN ENGINEERING, INC.
 777 10TH STREET
 MARION, IOWA 52302
 (319) 373-1318 19927-10

SECTION CORNER CERTIFICATE

OF
 LAND SURVEY MONUMENTS SITUATED IN SECTION 18, TOWNSHIP 85 NORTH,
 RANGE 3 WEST, OF THE FIFTH PRINCIPAL MERIDIAN, Jones COUNTY, IOWA.

PREVIOUSLY RECORDED IN BOOK 295 AT PAGE 132

FOR RECORDER'S USE

REASON FOR PREPARING CERTIFICATE:

- A) THERE IS NO CERTIFICATE FOR THE CORNER ON FILE WITH THE RECORDER OF THE COUNTY IN WHICH THE CORNER IS LOCATED.
- B) CORNER POSITION DIFFERS FROM THAT SHOWN IN THE PUBLIC RECORDS OF THE COUNTY IN WHICH THE CORNER IS LOCATED.
- C) THE CORNER MONUMENT HAS BEEN REPLACED OR MODIFIED.
- D) THE REFERENCE TIES REFERRED TO IN AN EXISTING PUBLIC RECORD ARE ~~INCORRECT~~. *have changed*

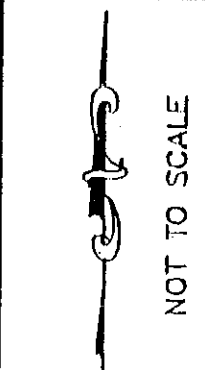
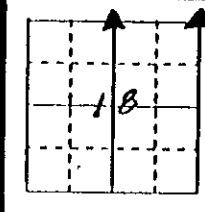
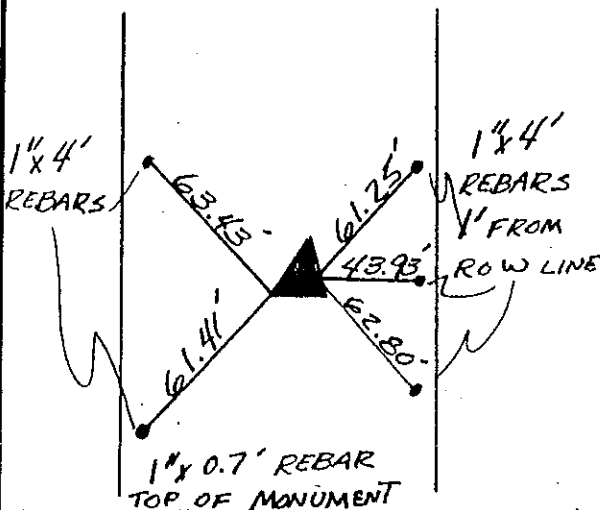
FILED **1827**
 RECORDERS OFFICE
 JONES COUNTY IOWA
 92 FEB -7 PM 12:11
 BOOK 314 PAGE 37
 DORIS JEANNE HERRICK
 RECORDER 5.00 *pl*

MONUMENT DESCRIPTION AND REMARKS :

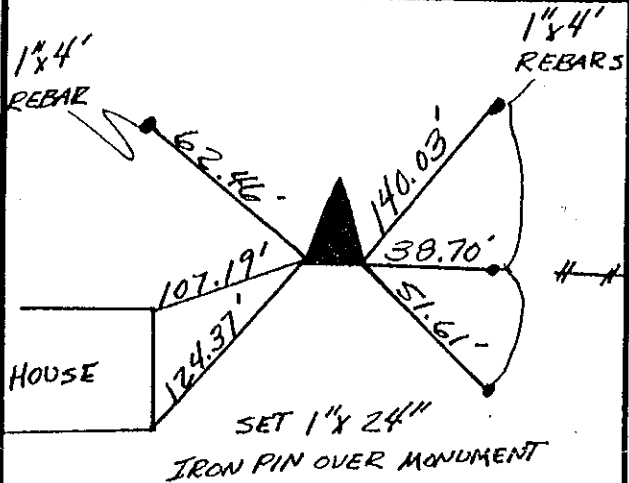
N 1/4 Corner - retied placed 1"x0.7' Iron Pin over Concrete Monument
 NE Corner - retied placed 1"x24" Iron Pin over Concrete Monument

RECOVERY TIE DRAWING

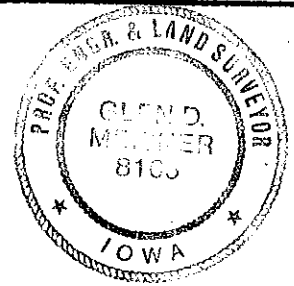
WAYNE N. 1/4 COR. SEC. 18 T85N R3W



WAYNE N.E. COR SEC. 18 T85N R3W



I, GLEN D. MEISNER, CERTIFY THAT THE CORNER LOCATION(S) SHOWN ON THIS RECORD WERE DETERMINED BY ME OR UNDER MY DIRECTION AND CONTROL AND THAT THIS U.S. PUBLIC LAND SURVEY MONUMENT RECORD IS CORRECT AND COMPLETE TO THE BEST OF MY KNOWLEDGE AND BELIEF.



Glen D. Meisner 1-14-92
 GLEN D. MEISNER L.S. NO 8165 DATE

DICTIONARY	GOVERNMENT CORNER 5/8" IRON PIN SET CENTERLINE	U.S. PUBLIC LAND SURVEY RECORD		HALL AND HALL ENGINEERS, INC.	
	EXISTING FENCE LINE R.O.W. LINE	PROJECT NO. C-787 Jones County		228 29TH STREET DRIVE S.E. CEDAR RAPIDS, IOWA 52403 319-382-9548	
BY	GDM	DATE	SCALE	F.N.	R.N.