

COPY

Jones County Marie Krutzfield Recorder
 Fee Book 2012 2717
 09/17/2012 @1144AM # Pages 1
 ZSC SEC COR CERT
 Total Fees: \$0.00

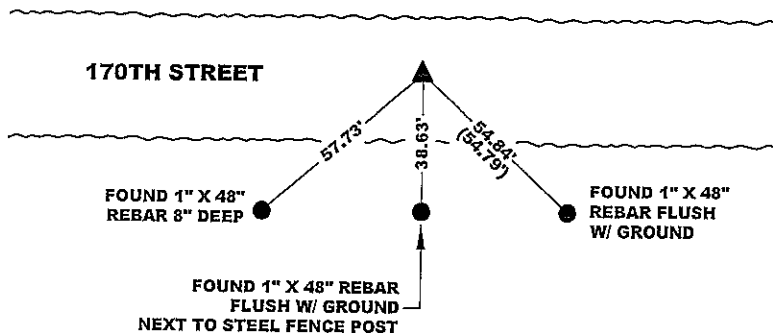
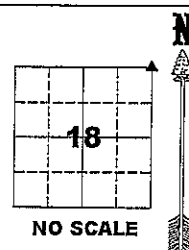
PREPARED BY
 CLARENCE J. WALTON, JONES COUNTY ENGINEER'S OFFICE, 19501 HWY. 64, ANAMOSA, IOWA, 52205 (319) 462-3785

UNITED STATES PUBLIC LAND
 SURVEY CORNER CERTIFICATE
 LAND SURVEY MONUMENTS SITUATED IN SECTION 18, TOWNSHIP 85 NORTH,
 RANGE 3 WEST OF THE 5TH PRINCIPAL MERIDIAN, JONES COUNTY, IOWA.

NE CORNER SECTION 18-T85N-R3W
 STATE PLANE COORDINATE (NAD 83 IOWA NORTH)
 N 3536816.19
 E 5536691.87

CORNER SECTION TOWNSHIP RANGE
 NE 18 T85N R3W

NOTE:
 THE STATE PLANE COORDINATE AS
 INDICATED IS FOR CONVENIENCE ONLY.
 THE TIES AS SHOWN SHOULD BE USED TO
 REPLACE THE CORNER, IF DESTROYED



"SURVEY MARKER"
 SIGN

PLEASE
 PROTECT
 NEARBY
**SURVEY
 MARKER**
 IF LOCATION OF THIS MARK
 IS ENDANGERED
 PLEASE CONTACT
 JONES COUNTY
 ENGINEER'S OFFICE
 319-462-3785

SURVEY DISC



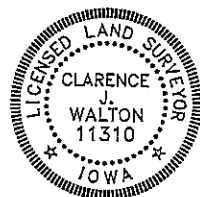
LEGEND

- YPC YELLOW PLASTIC CAP
- OPC ORANGE PLASTIC CAP
- () RECORDED AS

PREVIOUSLY RECORDED IN RECORDER'S DOCUMENT 1999 0330

MONUMENT DESCRIPTION AND HOW ESTABLISHED FOUND 1" X 48" REBAR 6" BELOW PRESENT ROAD SURFACE IN CENTERLINE OF ROAD BED.

FIELD BOOK 2009-2010, PAGE 57. DATE OF SURVEY: 9/14/12



I hereby certify that this land surveying document and the related survey work was performed by me or under my direct personal supervision and that I am a duly registered Land Surveyor under the laws of the State of Iowa.

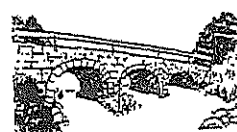
Signed: *Clarence J. Walton* 9/17/12
 Clarence J. Walton, L.S.
 My Registration Renewal Date is December 31, 2013
 Iowa License Number 11310
 Pages or sheets covered by this seal: 1 of 1

- A. THERE IS NO CERTIFICATE FOR THE CORNER ON FILE WITH THE RECORDER OF THE COUNTY IN WHICH THE CORNER IS LOCATED.
- B. THE CORNER MONUMENT HAS BEEN REPLACED OR MODIFIED.
- C. THE SURVEYOR IN RESPONSIBLE CHARGE OF THE LAND SURVEYING ACCEPTS A CORNER POSITION THAT DIFFERS FROM THAT SHOWN IN THE PUBLIC RECORDS OF THE COUNTY IN WHICH THE CORNER IS LOCATED.
- D. THE REFERENCE TIES REFERRED TO IN AN EXISTING PUBLIC RECORD NO LONGER EXIST.
- E. ADDED TIES TO FACILITATE LOCATING SECTION CORNER MONUMENT.

CORNERS TO BE INDEXED

CORNER	SECTION	TOWNSHIP	RANGE
NE	18	85N	3W
SE	7	85N	3W
SW	8	85N	3W
NW	17	85N	3W

JONES COUNTY ENGINEER'S OFFICE



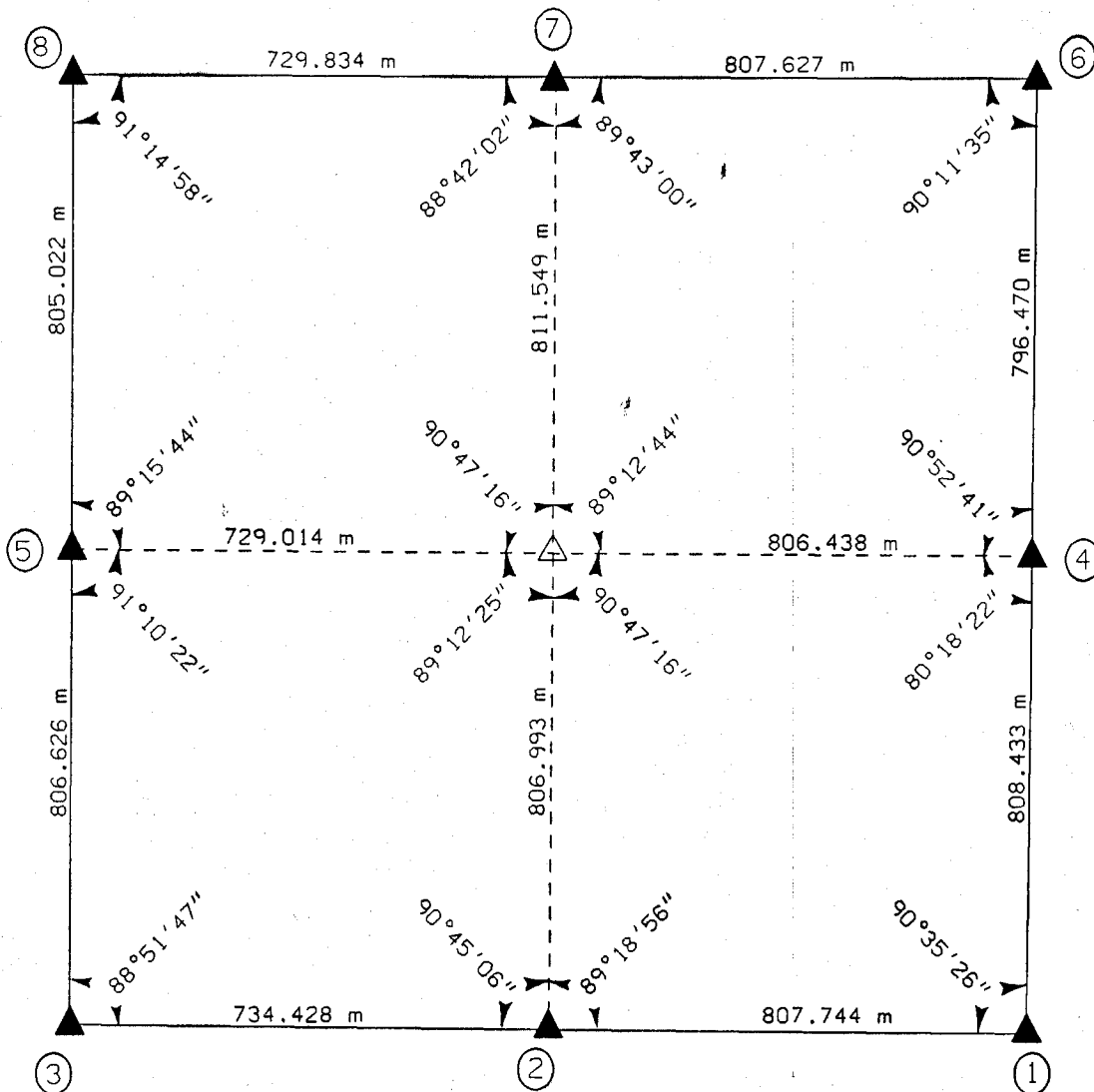
19501 HWY. 64, ANAMOSA, IOWA 52205
 (319) 462-3785

UNITED STATES PUBLIC SECTION CORNER CERTIFICATION
AND LAND CORNER SURVEY
SECTION 18 T-85N R-3W

MADE FOR
IOWA DEPARTMENT OF TRANSPORTATION FOR THE PURPOSE OF
RIGHT OF WAY DESCRIPTIONS ON PRIMARY ROAD No. U.S. 151

MADE BY
MICHAEL R. FAGLE R.L.S. No. 8505
JONES COUNTY, IOWA NHS-151-3(84)--19-57
APRIL 1998 THRU OCTOBER 1998

ALL DISTANCES WERE CAREFULLY MEASURED AND MAY NOT AGREE WITH ROAD SURVEY STATIONING

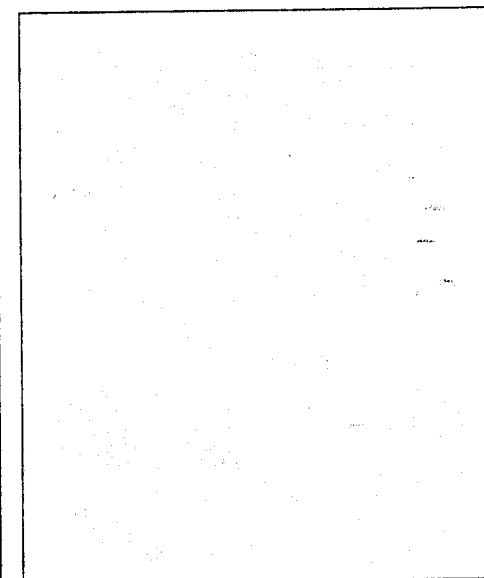
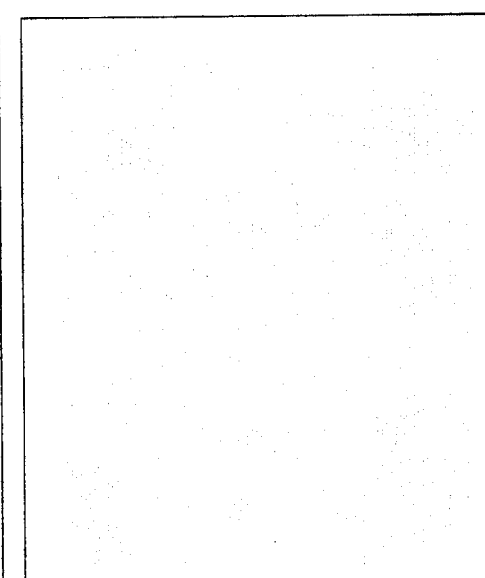
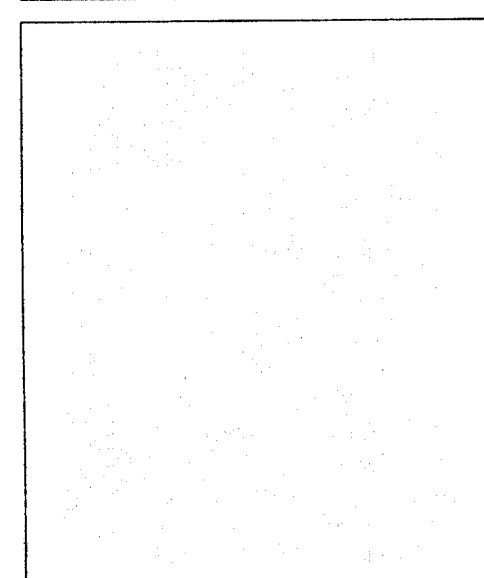
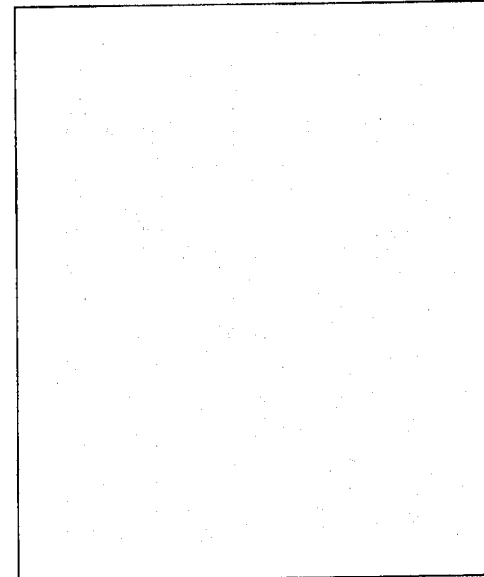
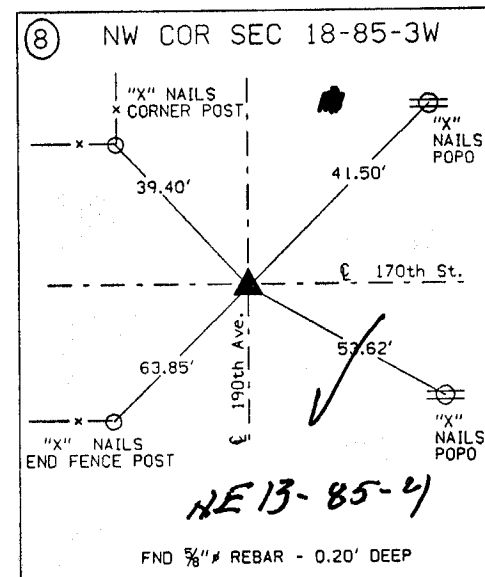
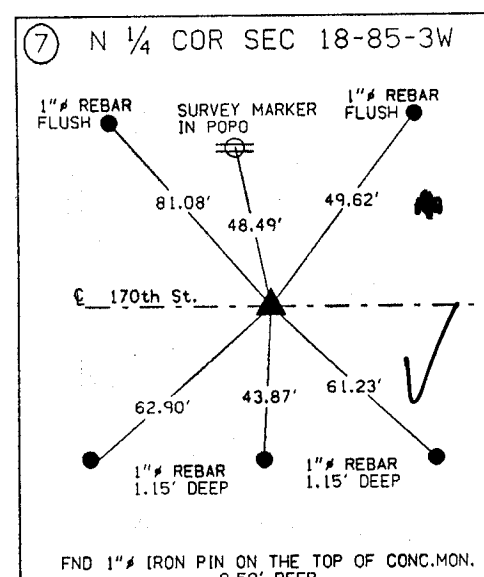
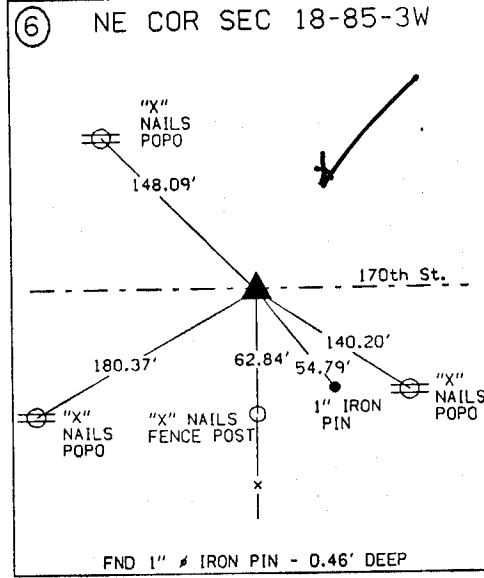
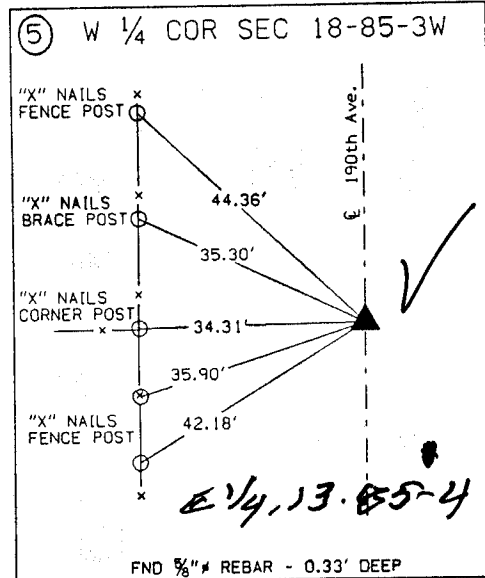
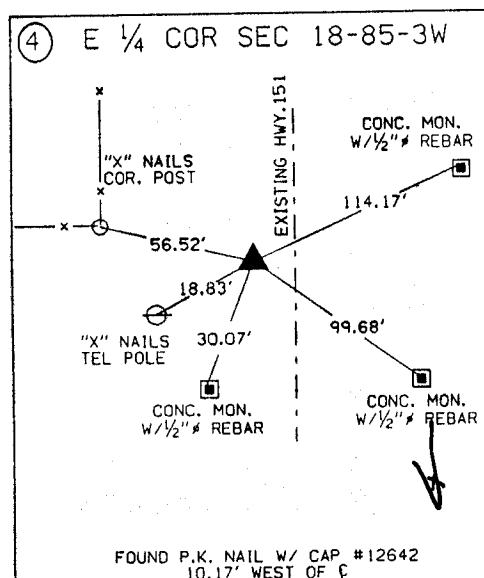
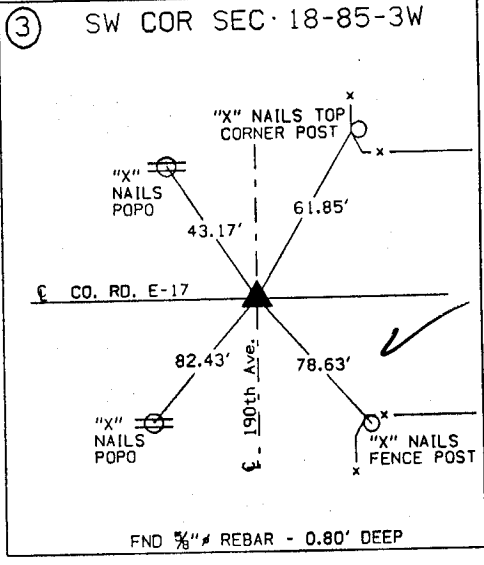
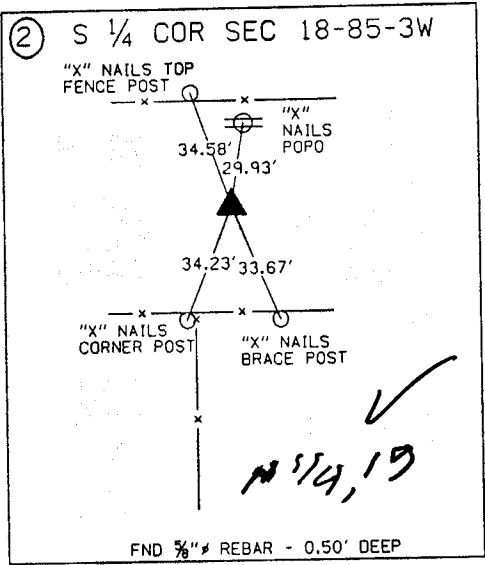
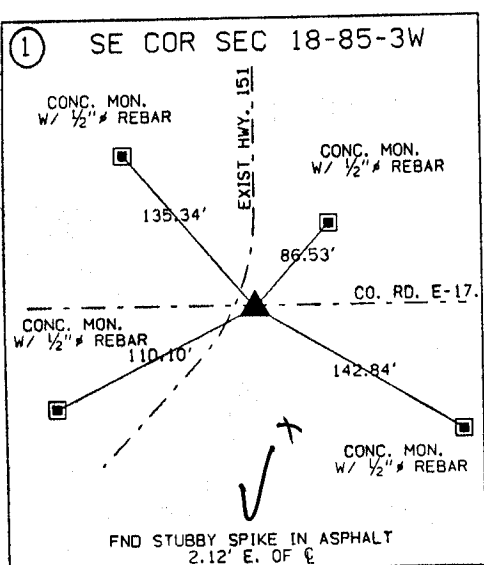


EARTH TECH

	<p>I hereby certify that this Land Surveying document was prepared by me or under my direct personal supervision and that I am a duly Licensed Land Surveyor under the laws of the State of Iowa.</p>
	<p><i>Michael R. Fagle</i> 1-21-99 MICHAEL R. FAGLE Date License number 8505 My license renewal date is December 31, 2000 Pages or sheets covered by this seal: <u>Two (2)</u></p>

METRIC

UNITED STATES PUBLIC SECTION CORNER CERTIFICATION
AND LAND CORNER SURVEY
SECTION 18 T-85N R-3W



ALL TIES ARE ENGLISH UNLESS OTHERWISE NOTED

UNITED STATES PUBLIC LAND SURVEY CORNER CERTIFICATE

SLSI 9-90

RECEIVED
 JONES COUNTY ENGINEER

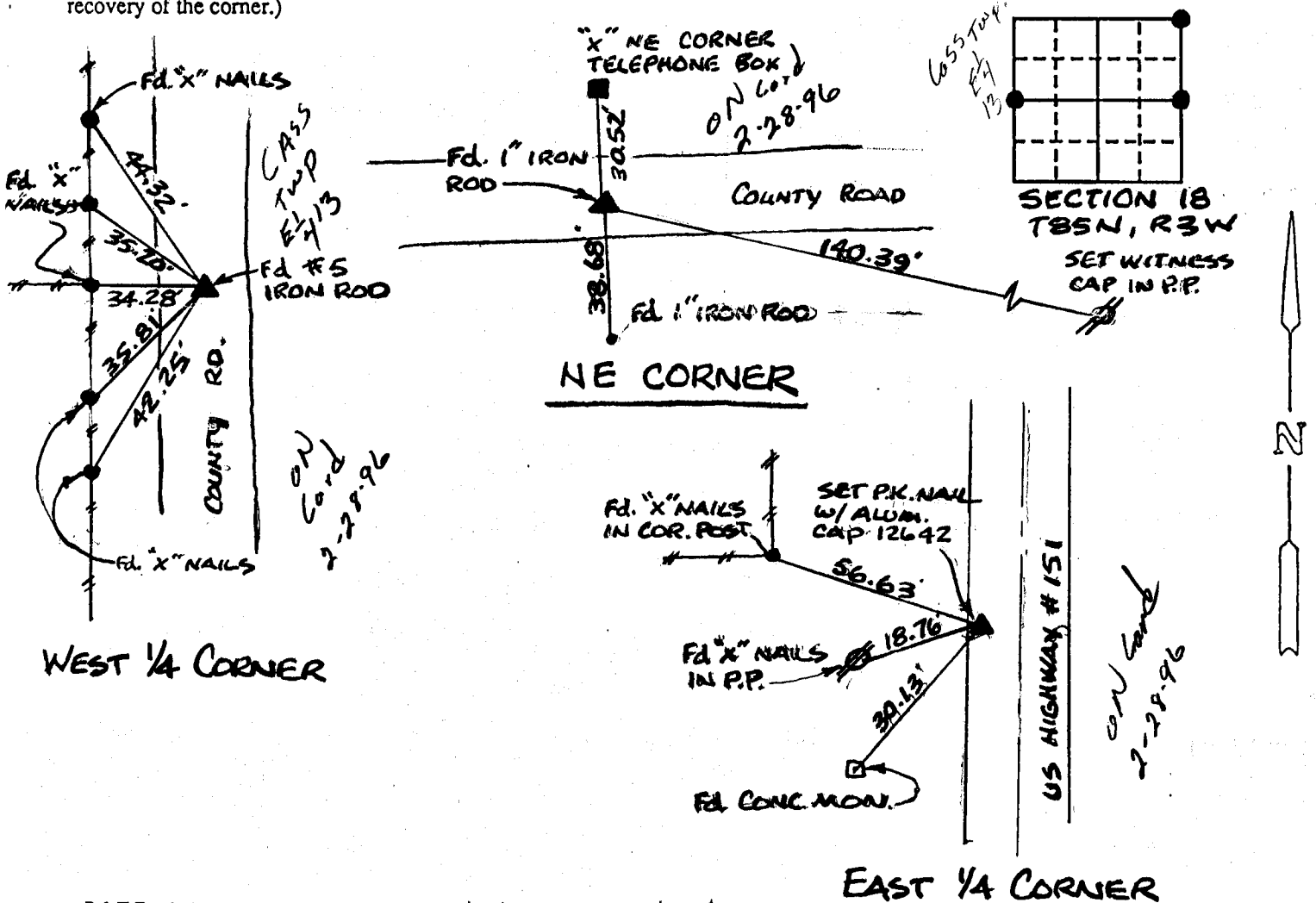
Land Survey Monuments situated in Section EIGHTEEN (18), Township 85 NORTH, Range 3 WEST, of the Fifth Principal Meridian, JONES County, Iowa. Previously recorded in BOOK 295 PAGE 132 in County Recorder's Office.

(Show reason for preparing this certificate, the evidence and detailed procedures used in establishing the corner positions and monumentation found or placed.)

Monument Description and Remarks: TIE POINT NO LONGER VALID OR DIMENSION CHANGED. NE CORNER - FOUND 1" IRON ROD, EAST 1/4 CORNER - ORIGINAL "X" IN PAVEMENT WAS COVERED BY ASPHALT. USED EXISTING TIES & SET PK NAIL W/ ALUM. CAP #12642, W 1/4 CORNER Fd. #5 IRON ROD

PLAN - VIEW

(Show a minimum of three reference ties to durable physical objects, relevant monuments and physical conditions that will enable recovery of the corner.)

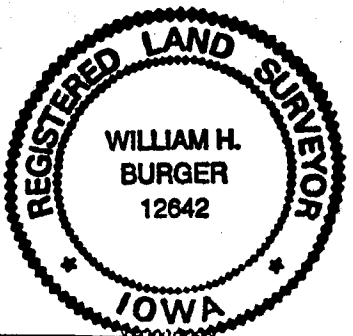


DATE OF FIELD WORK: 6/3/95, 6/27/95

I hereby certify that the survey work was completed and this certificate was prepared by me or under my direct personal supervision and that I am a duly registered land surveyor under the laws of the state of Iowa.

Signature: William H. Burger
 Name typed or printed: WILLIAM H. BURGER
 Date: 7/5/95 Reg. No. 12642

Corners	List Corners to be Indexed Section	Twp	Range
W 1/4	18	85 NORTH	3 WEST
E 1/4	18	85 NORTH	3 WEST
NE	18	85 NORTH	3 WEST



SEAL

854130-070595
 853180-070595
 070595

Wayne Twp.

SECTION CORNER CERTIFICATE

OF
 LAND SURVEY MONUMENTS SITUATED IN SECTION 18, TOWNSHIP 85 NORTH,
 RANGE 3 WEST, OF THE FIFTH PRINCIPAL MERIDIAN, Jones, COUNTY, IOWA.

PREVIOUSLY RECORDED IN BOOK 295 AT PAGE 132

FOR RECORDER'S USE

REASON FOR PREPARING CERTIFICATE:

- A) THERE IS NO CERTIFICATE FOR THE CORNER ON FILE WITH THE RECORDER OF THE COUNTY IN WHICH THE CORNER IS LOCATED.
- B) CORNER POSITION DIFFERS FROM THAT SHOWN IN THE PUBLIC RECORDS OF THE COUNTY IN WHICH THE CORNER IS LOCATED.
- C) THE CORNER MONUMENT HAS BEEN REPLACED OR MODIFIED.
- D) THE REFERENCE TIES REFERRED TO IN AN EXISTING PUBLIC RECORD ARE ~~INCORRECT~~. *have changed*

FILED 1827
 RECORDERS OFFICE
 JONES COUNTY IOWA
 92 FEB -7 PM 12:11
 BOOK 314 PAGE 37
 DORIS JEANNE HERRER
 RECORDER *5.00*

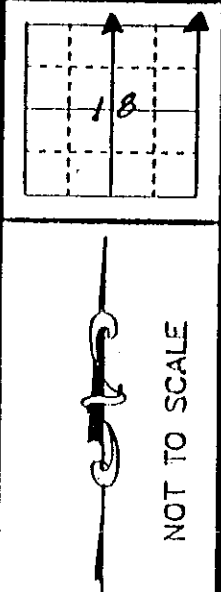
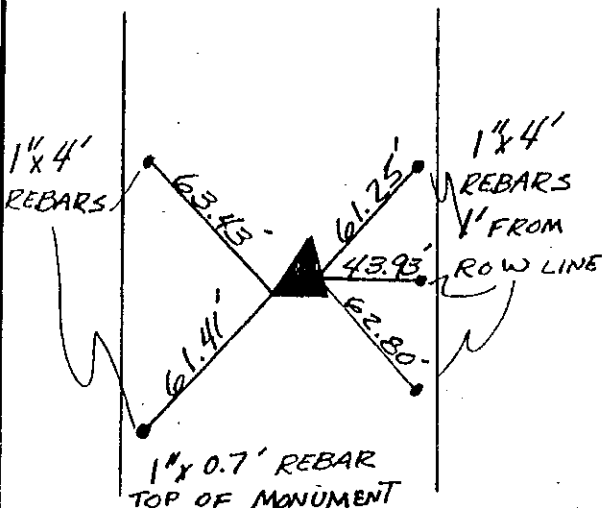
MONUMENT DESCRIPTION AND REMARKS :

N 1/4 Corner - retied placed 1"x0.7' Iron Pin over Concrete Monument

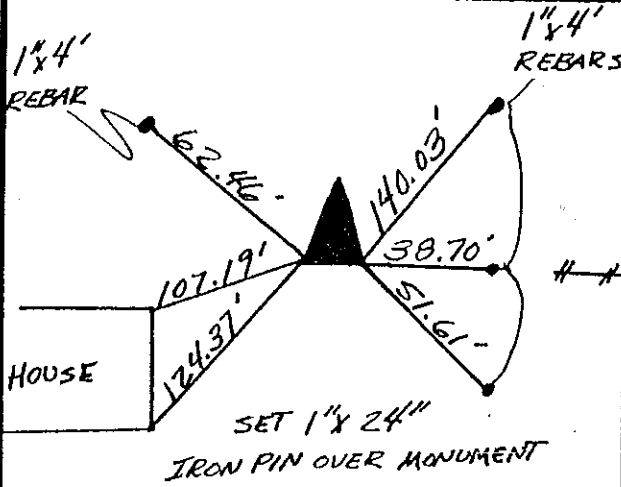
NE Corner - retied placed 1"x24" Iron Pin over Concrete Monument

RECOVERY TIE DRAWING

WAYNE N. 1/4 COR. SEC. 18 T85N R3W



WAYNE N.E. COR SEC. 18 T85N R3W



I, GLEN D. MEISNER, CERTIFY THAT THE CORNER LOCATION(S) SHOWN ON THIS RECORD WERE DETERMINED BY ME OR UNDER MY DIRECTION AND CONTROL AND THAT THIS U.S. PUBLIC LAND SURVEY MONUMENT RECORD IS CORRECT AND COMPLETE TO THE BEST OF MY KNOWLEDGE AND BELIEF.



Glen D. Meisner 1-14-92
 GLEN D. MEISNER L.S. NO 8165 DATE

GOVERNMENT CORNER 5/8" IRON PIN SET CENTERLINE EXISTING FENCE LINE R.O.W. LINE	U.S. PUBLIC LAND SURVEY RECORD		HALL AND HALL ENGINEERS, INC. 228 29TH STREET DRIVE S.E. CEDAR RAPIDS, IOWA 52403 319-362-9548
	SHEET NO. C-787	PROJECT NO. Jones County	
DATE	SCALE	TNS	TNS