

SECTION CORNER CERTIFICATE

OF
 LAND SURVEY MONUMENTS SITUATED IN SECTION 1, TOWNSHIP 85 NORTH,
 RANGE 3 WEST, OF THE FIFTH PRINCIPAL MERIDIAN, Jones, COUNTY, IOWA.

PREVIOUSLY RECORDED IN BOOK _____ AT PAGE _____

FOR RECORDER'S USE

REASON FOR PREPARING CERTIFICATE:

- A) THERE IS NO CERTIFICATE FOR THE CORNER ON FILE WITH THE RECORDER OF THE COUNTY IN WHICH THE CORNER IS LOCATED.
- B) CORNER POSITION DIFFERS FROM THAT SHOWN IN THE PUBLIC RECORDS OF THE COUNTY IN WHICH THE CORNER IS LOCATED.
- C) THE CORNER MONUMENT HAS BEEN REPLACED OR MODIFIED.
- D) THE REFERENCE TIES REFERRED TO IN AN EXISTING PUBLIC RECORD ARE INCORRECT.

1260

FILED
 RECORDERS OFFICE
 JONES COUNTY IOWA

90 NOV 28 PM 3:38

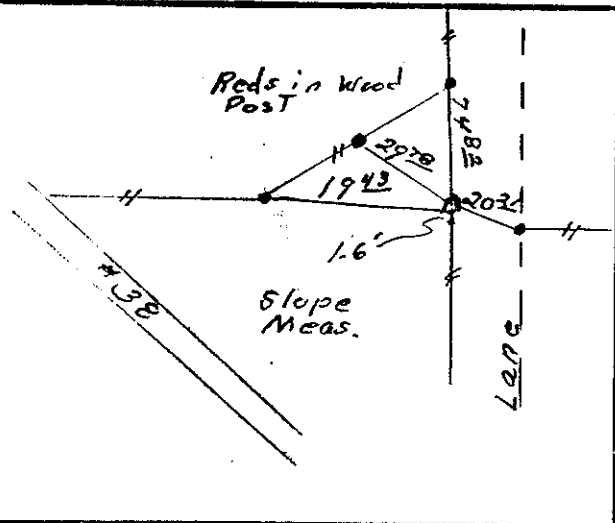
BOOK 295 PAGE 25
 DORIS JEANNE HERREN
 RECORDER 500

MONUMENT DESCRIPTION AND REMARKS :

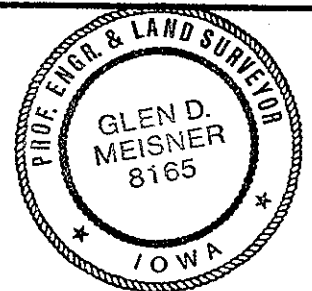
Found S.C.M. buried 4" on North side of post 1.6' with steel rod out the top.

RECOVERY TIE DRAWING

E $\frac{1}{2}$ Corner Section 1-85-3



I, GLEN D. MEISNER, CERTIFY THAT THE CORNER LOCATION(S) SHOWN ON THIS RECORD WERE DETERMINED BY ME OR UNDER MY DIRECTION AND CONTROL AND THAT THIS U.S. PUBLIC LAND SURVEY MONUMENT RECORD IS CORRECT AND COMPLETE TO THE BEST OF MY KNOWLEDGE AND BELIEF.



Glen D. Meisner 8165 11-16-90
 GLEN D. MEISNER L.S. NO 8165 DATE

GOVERNMENT CORNER 5/8" THE PIN SET CENTERLINE EXISTING FENCE LINE R.O.W. LINE	SHEET TITLE <h3 style="margin: 0;">U.S. PUBLIC LAND SURVEY RECORD</h3> PROJECT TITLE	HALL AND HALL ENGINEERS, INC. 226 29TH STREET DRIVE S.E. CEDAR RAPIDS, IOWA 52403 319-362-9548
D NW	TIC	P PA
DATE	SCALE	F NO P NO