

2005 4302

FILED
RECORDERS OFFICE
JONES COUNTY IOWA

05 NOV 29 AM 9:57

MARIE KRUTZFIELD
RECORDER NO FEE

*LOVELL
W/SINE*

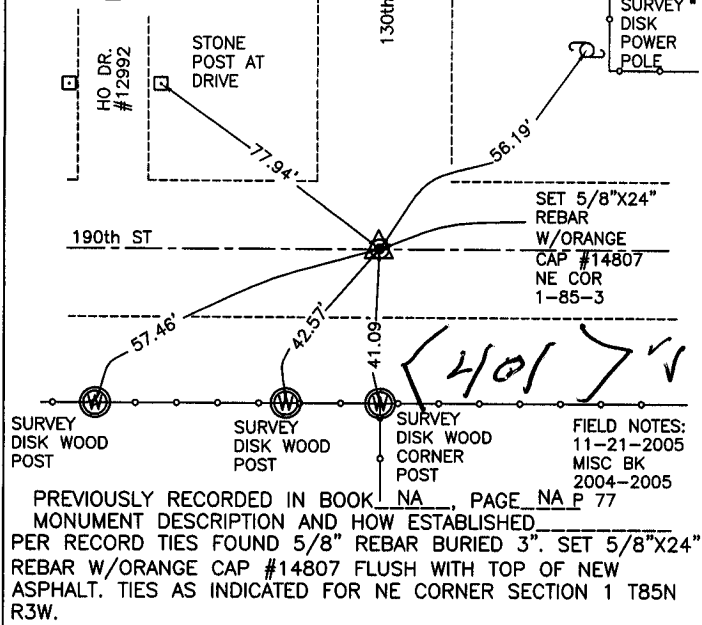
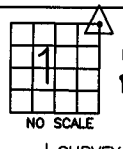
J.D. TJEPKES, LS. JONES COUNTY ENGINEER'S OFFICE, 19501 HWY. 64, ANAMOSA, IOWA, 52205 (319)462-3785

UNITED STATES PUBLIC LAND SURVEY CORNER CERTIFICATE

LAND SURVEY MONUMENTS SITUATED IN SECTION 1, TOWNSHIP 85
NORTH, RANGE 3 WEST OF THE 5TH P.M., JONES COUNTY, IOWA

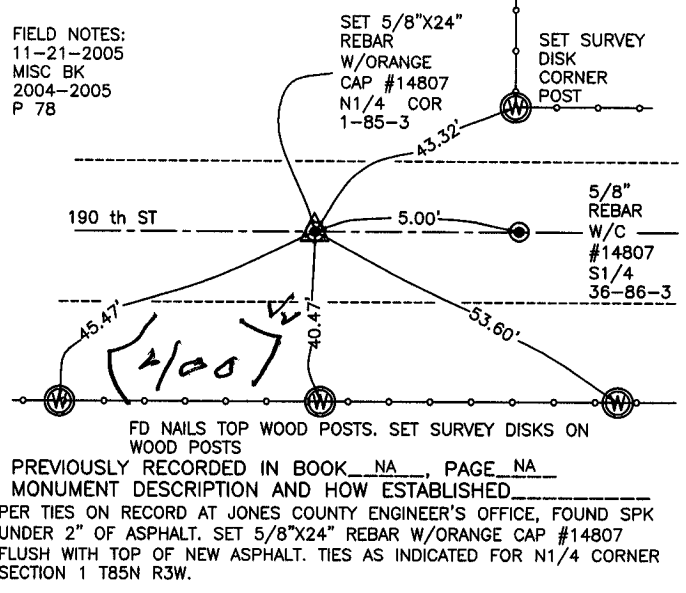
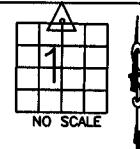
CORNERS TO BE INDEXED

CORNER SECTION TOWNSHIP RANGE
NE 1 85N 3W
OFFICE FILE NO.
85301e_112305.tif



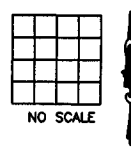
CORNERS TO BE INDEXED

CORNER SECTION TOWNSHIP RANGE
N1/4 1 85N 3W
OFFICE FILE NO.
85301c_112305.tif



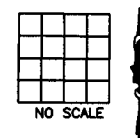
CORNERS TO BE INDEXED

CORNER SECTION TOWNSHIP RANGE
OFFICE FILE NO.



CORNERS TO BE INDEXED

CORNER SECTION TOWNSHIP RANGE
OFFICE FILE NO.



SECTION CORNER CERTIFICATE

OF
 LAND SURVEY MONUMENTS SITUATED IN SECTION 1, TOWNSHIP 85 NORTH,
 RANGE 3 WEST, OF THE FIFTH PRINCIPAL MERIDIAN, JONES, COUNTY, IOWA.

PREVIOUSLY RECORDED IN BOOK _____ AT PAGE _____.

FOR RECORDER'S USE

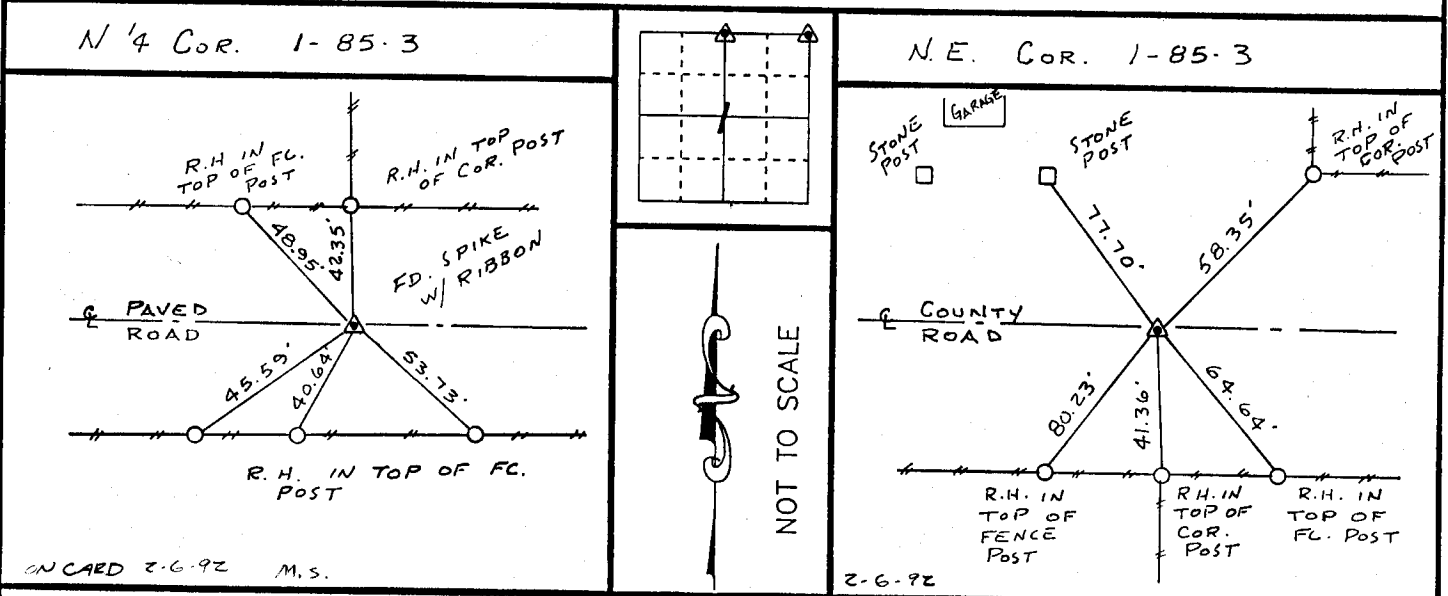
REASON FOR PREPARING CERTIFICATE:

- A) THERE IS NO CERTIFICATE FOR THE CORNER ON FILE WITH THE RECORDER OF THE COUNTY IN WHICH THE CORNER IS LOCATED.
- B) CORNER POSITION DIFFERS FROM THAT SHOWN IN THE PUBLIC RECORDS OF THE COUNTY IN WHICH THE CORNER IS LOCATED.
- C) THE CORNER MONUMENT HAS BEEN REPLACED OR MODIFIED.
- D) THE REFERENCE TIES REFERRED TO IN AN EXISTING PUBLIC RECORD ARE INCORRECT.

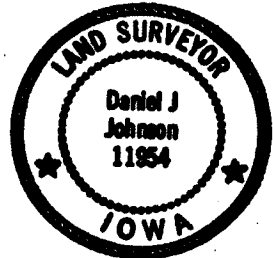
MONUMENT DESCRIPTION AND REMARKS :

N 1/4 CORNER SECTION 1-T85N-R3W FOUND SPIKE NAIL W/ RIBBON ON E
COUNTY PAVED ROAD FLUSH WITH SURFACE
N.E. CORNER SECTION 1-T85N-R3W FOUND 5/8" REBAR 3" DEEP ON E
COUNTY ROAD

RECOVERY TIE DRAWING



I, DANIEL T. JOHNSON, CERTIFY THAT THE CORNER LOCATION(S) SHOWN ON THIS RECORD WERE DETERMINED BY ME OR UNDER MY DIRECTION AND CONTROL AND THAT THIS U.S. PUBLIC LAND SURVEY MONUMENT RECORD IS CORRECT AND COMPLETE TO THE BEST OF MY KNOWLEDGE AND BELIEF.



Daniel Johnson
 DANIEL T. JOHNSON L.S. NO 11954 DATE 1-7-91

DZREGEL	<input type="checkbox"/> GOVERNMENT CORNER	SHEET TITLE: <u>U.S. PUBLIC LAND SURVEY RECORD</u>	H	HALL AND HALL ENGINEERS, INC. 226 29TH STREET DRIVE S.E. CEDAR RAPIDS, IOWA 52403 319-362-9548
	<input type="checkbox"/> 5/8" TIE PIN SET	PROJECT TITLE: <u>M E MULLIN SURVEY</u>		
	<input type="checkbox"/> CENTERLINE			
	<input type="checkbox"/> EXISTING FENCE LINE			
	<input type="checkbox"/> R.O.W. LINE			
	DWN R.W.B.	CHK D.J.J.	APP	DATE <u>1-3-92</u>
				SCALE <u>NONE</u>
				FNO <u>0T23</u>
				PNO <u>4571</u>

85301e - 010791 , 85301e - 010791