

2005 0254

FILED
RECORDERS OFFICE
JONES COUNTY IOWA

05 JAN 21 AM 9:58

MARIE KRUTZFIELD
RECORDER 7:00 pm

PREPARED BY HALL & HALL ENGINEERS, INC. 209 29TH STREET N.E. CEDAR RAPIDS, IOWA 52402 (319) 362-9548

SECTION CORNER CERTIFICATE

OF

LAND SURVEY MONUMENTS SITUATED IN SECTION 20, TOWNSHIP 85 NORTH,
RANGE 3 WEST, OF THE FIFTH PRINCIPAL MERIDIAN, JONES COUNTY, IOWA.

PREVIOUSLY RECORDED IN BOOK _____ AT PAGE _____

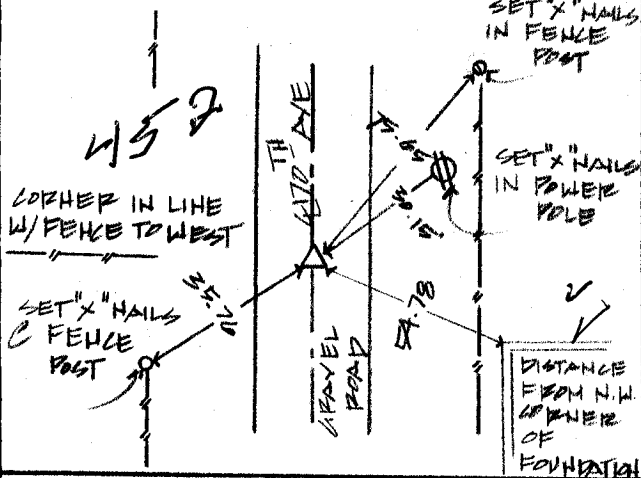
MONUMENT DESCRIPTION AND REMARKS:

E 1/4 CORNER OF SEC. 20, FOUND 3/4" PIPE W/ CAP L.S. #8505

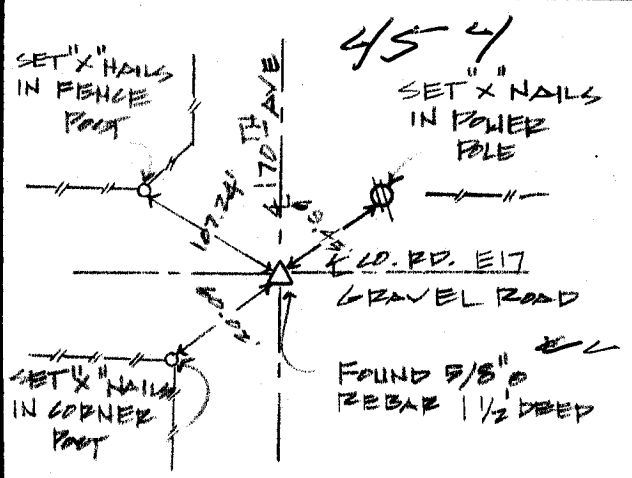
N.E. CORNER OF SEC. 20, FOUND 5/8" REBAR 1 1/2' DEEP

RECOVERY TIE DRAWING

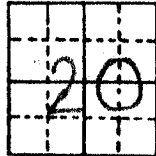
E 1/4 CORNER 20-85-3



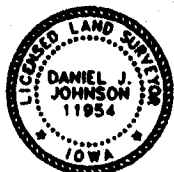
NE CORNER 20-85-3



85320e - 012005.tie



85320e - 012005.tie



I hereby certify that this land surveying document was prepared and the related survey work was performed by me or under my direct personal supervision and that I am a duly licensed Land Surveyor under the laws of the State of Iowa.

Signed: Daniel J. Johnson Date: 1-20-05

Daniel J. Johnson, L.S. 11954
My license renewal date is December 31, 2006

Pages or sheets covered by this seal:
(Entire submission unless specified here)

REASON FOR PREPARING CERTIFICATE:

- A) THERE IS NO CERTIFICATE FOR THE CORNER ON FILE WITH THE RECORDER OF THE COUNTY IN WHICH THE CORNER IS LOCATED.
- B) CORNER POSITION DIFFERS FROM THAT SHOWN IN THE PUBLIC RECORDS OF THE COUNTY IN WHICH THE CORNER IS LOCATED.
- C) THE CORNER MONUMENT HAS BEEN REPLACED OR MODIFIED.
- D) THE REFERENCE TIES REFERRED TO IN AN EXISTING PUBLIC RECORD ARE INCORRECT.

△ GOVERNMENT CORNER
● PROPERTY CORNER FOUND
○ 1/2" X 30" W/ LS CAP SET
- - - EXISTING FENCE LINE
— — — PROPERTY LINE

SHEET NO. 10 PUBLIC LAND SURVEY RECORD

PROJECT: HOLAMP, ARLENE



HALL AND HALL ENGINEERS, INC.

209 29TH STREET N.E.
CEDAR RAPIDS, IOWA 52402
(319) 362-9548

DATE: <u>10/21/05</u>	SCALE: <u>N.T.S.</u>	BY: <u>AR</u>	PROJ: <u>#2005</u>
BY: <u>T.M.P.</u>	CHK: <u>D.J.J.</u>	APP: <u>D.J.J.</u>	

03 AUG 28 AM 9:50

MARIE KRUTZFIELD
 RECORDER NO FEE

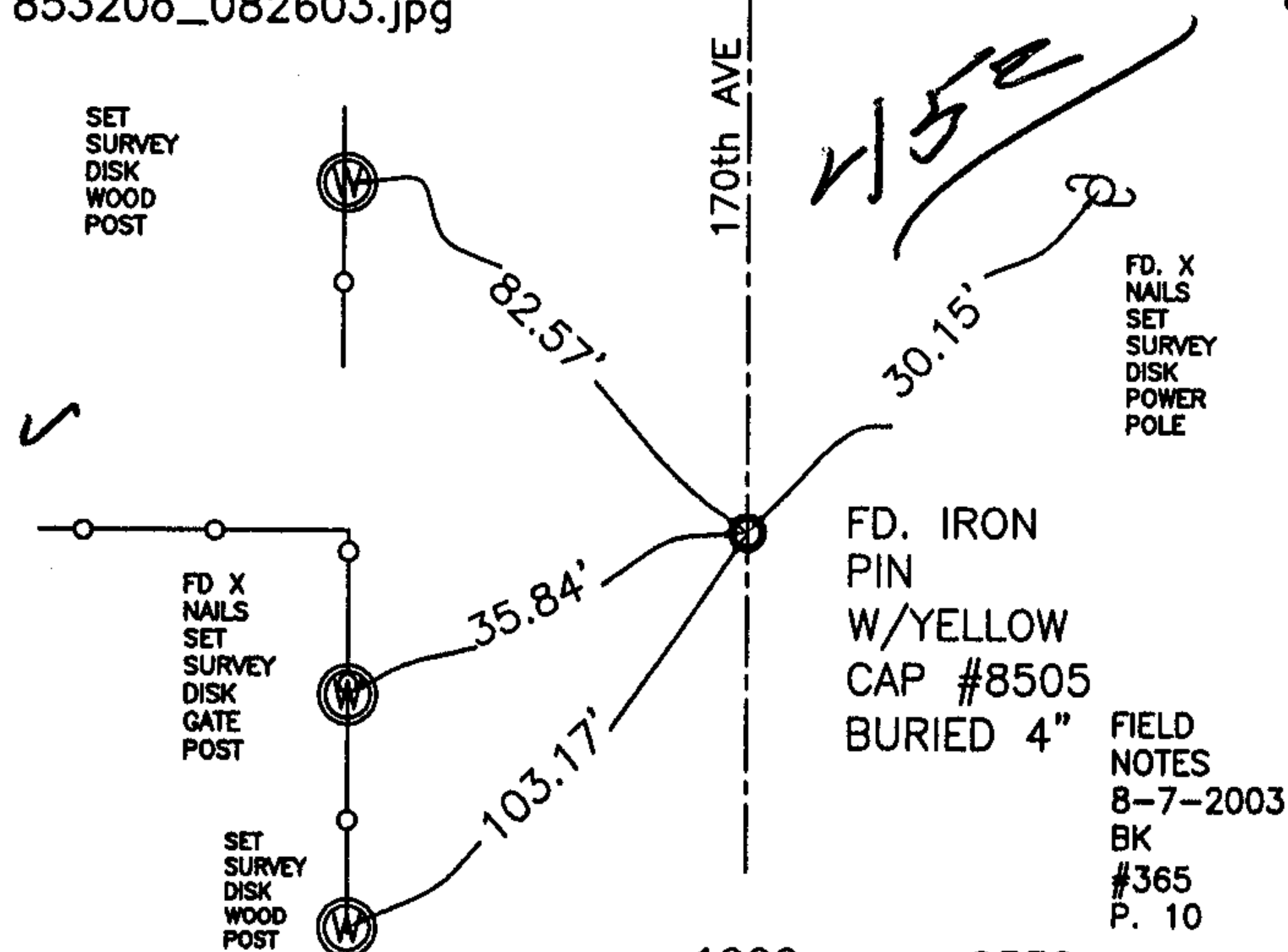
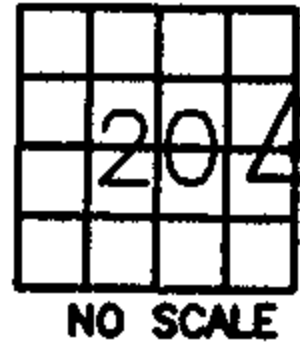
J.D. Tjepkes, LS. JONES COUNTY ENGINEER'S OFFICE, 19501 HWY. 64, ANAMOSA, IOWA, 52205 (319)462-3785

UNITED STATES PUBLIC LAND SURVEY CORNER CERTIFICATE

LAND SURVEY MONUMENTS SITUATED IN SECTION 20, TOWNSHIP 85
 NORTH, RANGE 3 WEST OF THE 5TH P.M., JONES COUNTY, IOWA

CORNERS TO BE INDEXED

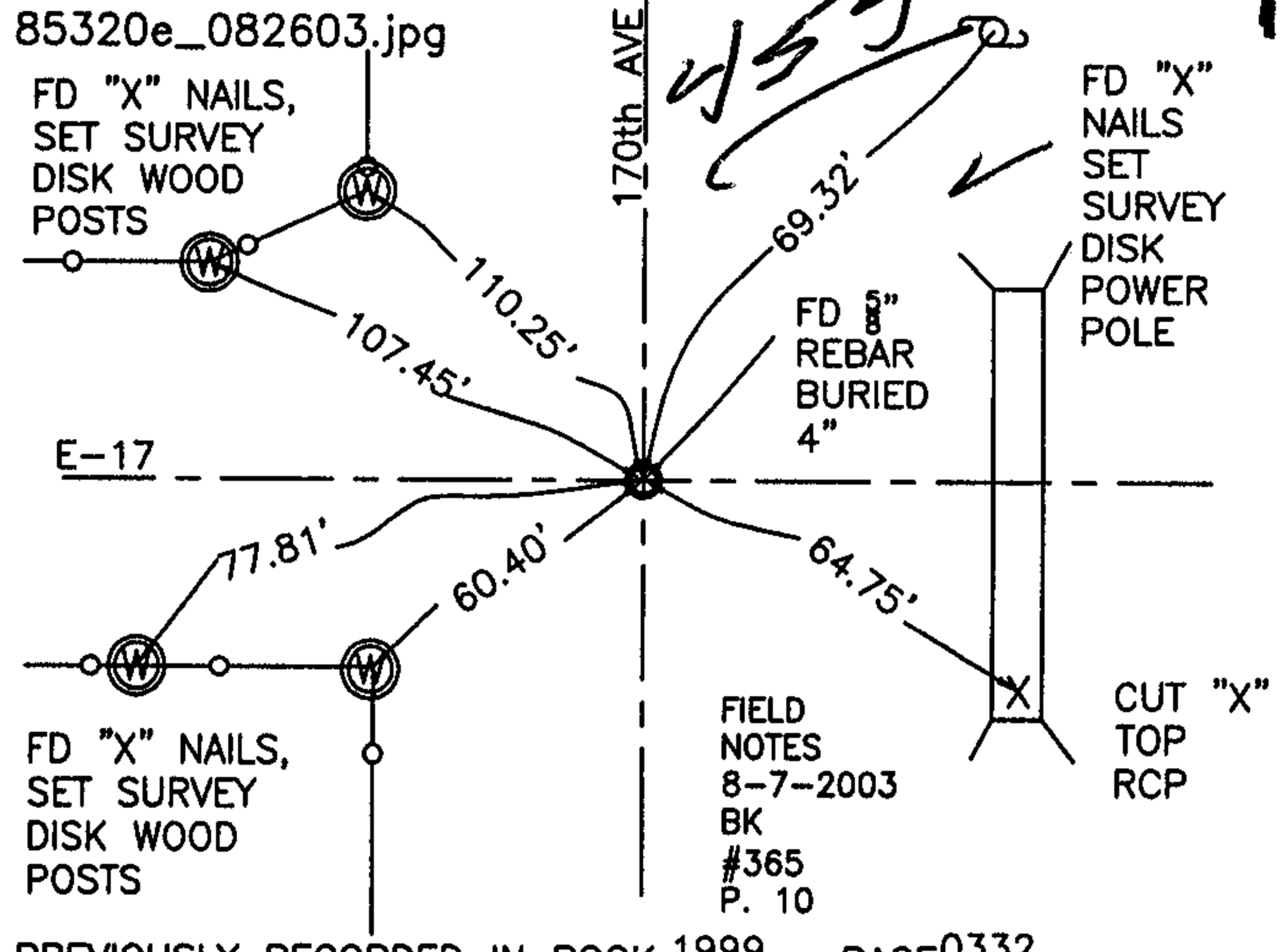
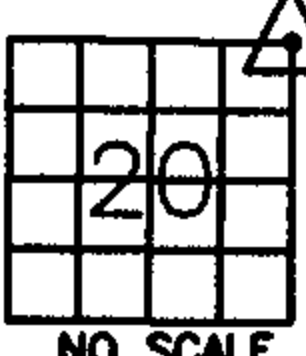
CORNER SECTION TOWNSHIP RANGE
 E1/4 20 85N 3W
 OFFICE FILE NO.
 85320o_082603.jpg



PREVIOUSLY RECORDED IN BOOK 1999, PAGE 0332
 MONUMENT DESCRIPTION AND HOW ESTABLISHED _____
 PER TIES OF LS #8505, FOGLE, FD. 1/2" IRON PIN W/CAP #8505 IN ROAD BED. NOTE: PIN WAS SET ON SPLIT OF FENCES & SPLIT OF SE & NE CORNERS OF SECTION. RETIED AS INDICATED.

CORNERS TO BE INDEXED

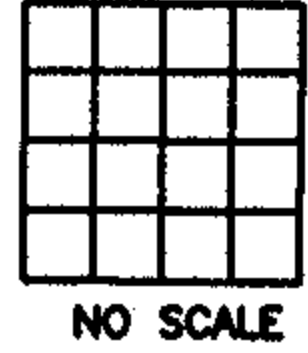
CORNER SECTION TOWNSHIP RANGE
 NE 20 85N 3W
 OFFICE FILE NO.
 85320e_082603.jpg



PREVIOUSLY RECORDED IN BOOK 1999, PAGE 0332
 MONUMENT DESCRIPTION AND HOW ESTABLISHED _____
 PER TIES OF LS # 8505, FD. 5/8" REBAR IN INTERSECTION OF E-17 & 170th AVE. BURIED 4". RETIED AS INDICATED.

CORNERS TO BE INDEXED

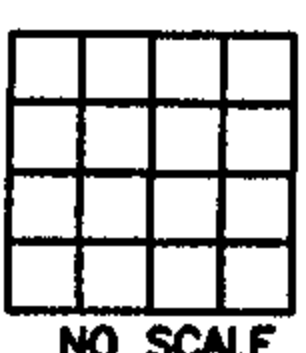
CORNER SECTION TOWNSHIP RANGE
 OFFICE FILE NO.



PREVIOUSLY RECORDED IN BOOK _____, PAGE _____
 MONUMENT DESCRIPTION AND HOW ESTABLISHED _____

CORNERS TO BE INDEXED

CORNER SECTION TOWNSHIP RANGE
 OFFICE FILE NO.



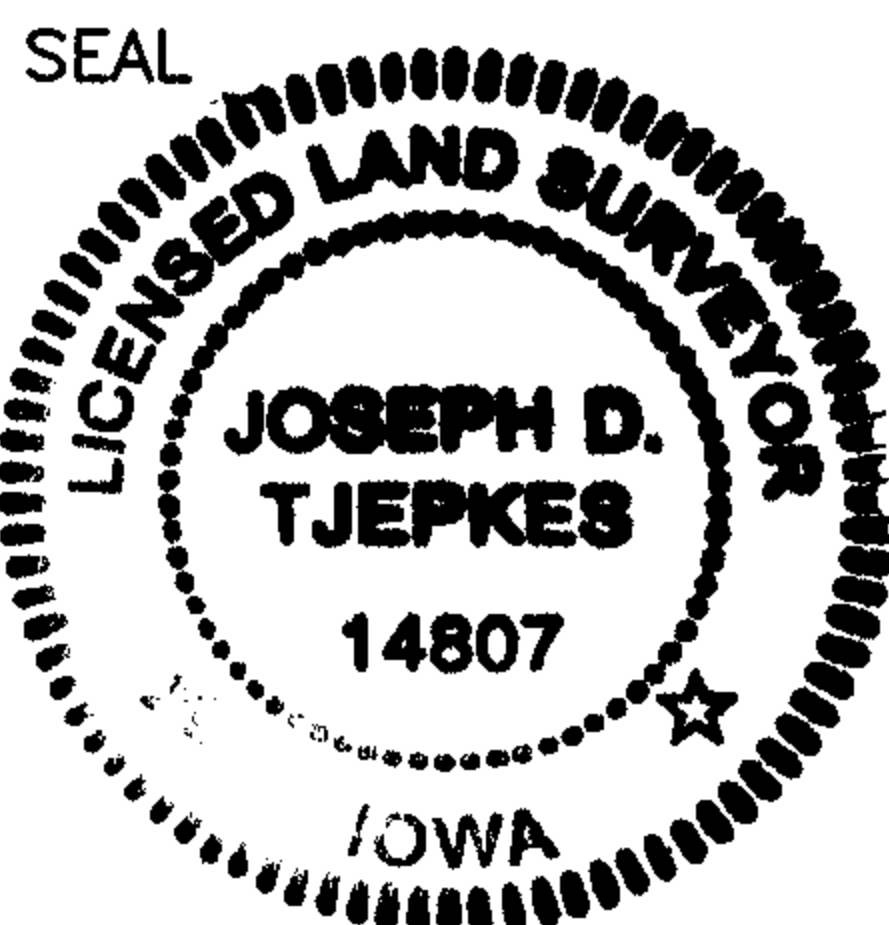
PREVIOUSLY RECORDED IN BOOK _____, PAGE _____
 MONUMENT DESCRIPTION AND HOW ESTABLISHED _____

I hereby declare that this plat, survey or report was made by me or under my direct personal supervision and that I am a duly registered Land Surveyor under the laws of the State of Iowa.

Signed:

Joseph D. Tjepkes 8-27-03

Joseph D. Tjepkes L.S. Iowa Reg. No. 14807
 My Registration Renewal Date is December 31, 2004



J.D. Tjepkes LS 14807
 JONES COUNTY
 ENGINEER'S OFFICE

19501 HWY. 64,
 ANAMOSA, IOWA,
 52205 (319)462-3785

SECTION CORNER CERTIFICATE

OF
 LAND SURVEY MONUMENTS SITUATED IN SECTION 21, TOWNSHIP 85 NORTH,
 RANGE 3 WEST, OF THE FIFTH PRINCIPAL MERIDIAN, JONES, COUNTY, IOWA.

PREVIOUSLY RECORDED IN BOOK _____ AT PAGE _____

FOR RECORDER'S USE

REASON FOR PREPARING CERTIFICATE:

- A) THERE IS NO CERTIFICATE FOR THE CORNER ON FILE WITH THE RECORDER OF THE COUNTY IN WHICH THE CORNER IS LOCATED.
- B) CORNER POSITION DIFFERS FROM THAT SHOWN IN THE PUBLIC RECORDS OF THE COUNTY IN WHICH THE CORNER IS LOCATED.
- C) THE CORNER MONUMENT HAS BEEN REPLACED OR MODIFIED.
- D) THE REFERENCE TIES REFERRED TO IN AN EXISTING PUBLIC RECORD ARE INCORRECT.

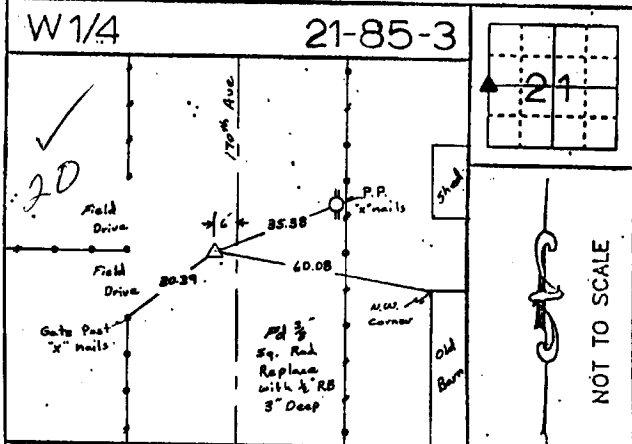
1999 3195
 FILED
 RECORDERS OFFICE
 JONES COUNTY IOWA
 99 SEP -8 AM 10:27
 MARIE KRUTZFIELD
 RECORDER

6.00 PD

MONUMENT DESCRIPTION AND REMARKS:

West 1/4 Section 21 - Township 85 North - Range 3 West Found 3" Square Iron Bar
 Replaced with 1/2" Rebar 3" Deep

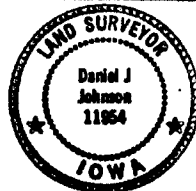
RECOVERY TIE DRAWING



E 1/4

I, DANIEL J. JOHNSON, CERTIFY THAT THE CORNER LOCATION(S) SHOWN ON THIS RECORD WERE DETERMINED BY ME OR UNDER MY DIRECTION AND CONTROL AND THAT THIS U.S. PUBLIC LAND SURVEY MONUMENT RECORD IS CORRECT AND COMPLETE TO THE BEST OF MY KNOWLEDGE AND BELIEF.

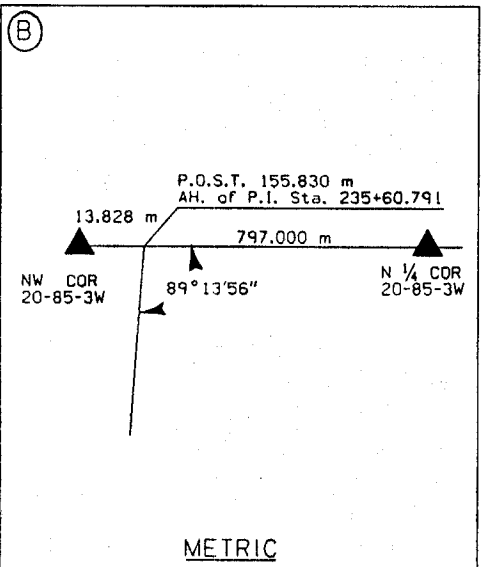
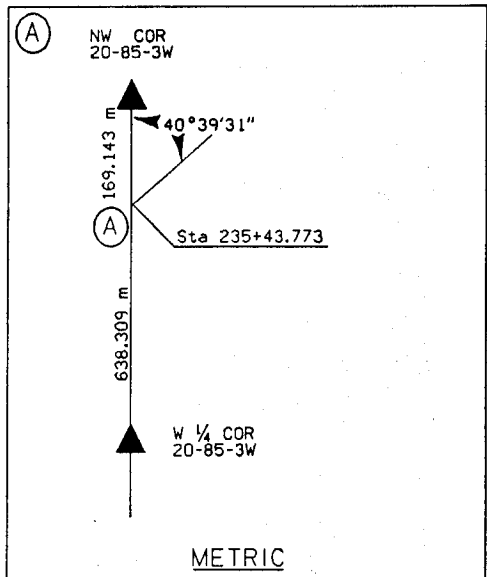
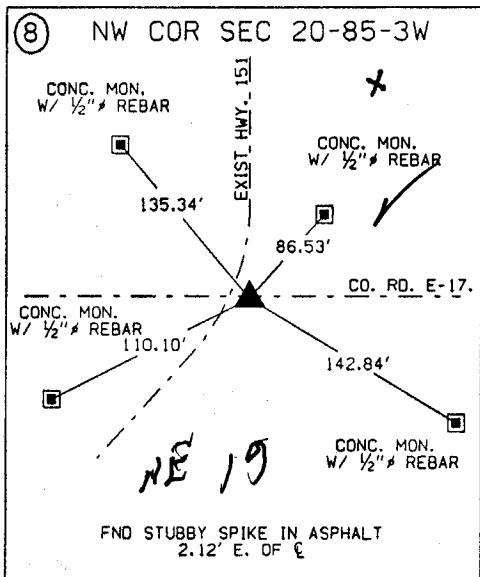
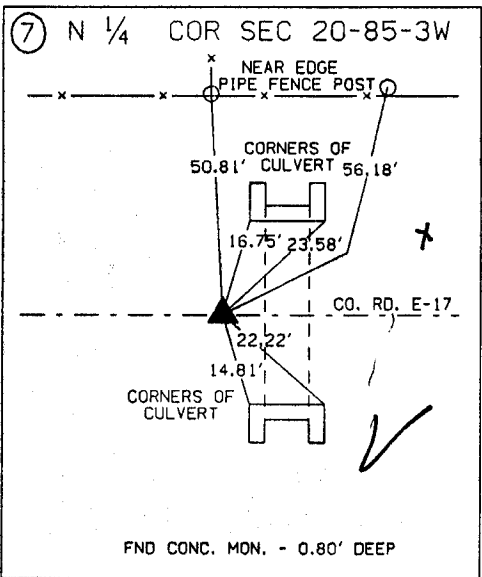
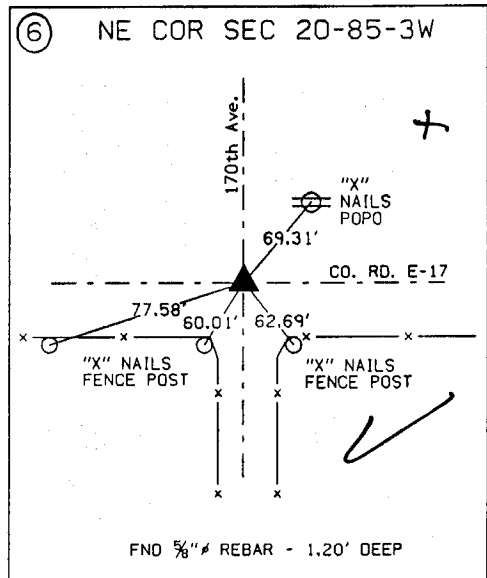
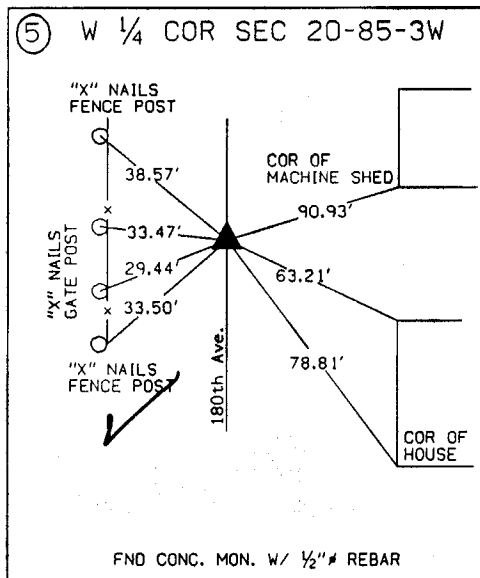
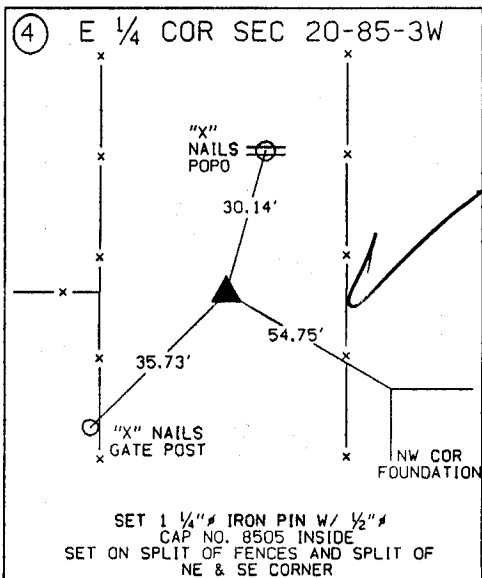
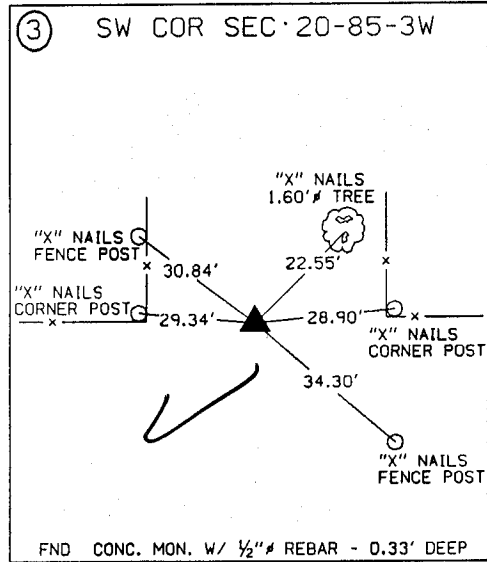
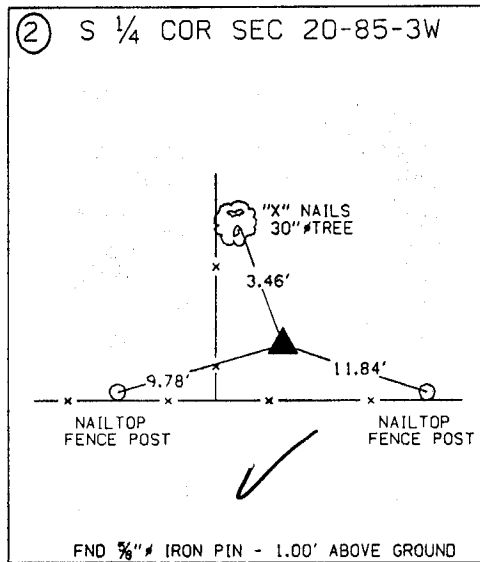
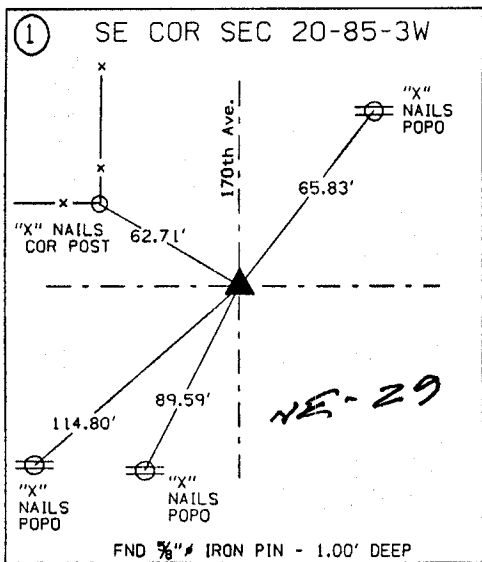
Daniel J. Johnson 9-8-99
 DANIEL J. JOHNSON L.S. NO 11954 DATE



CONVENTION CORNER 3/4" DE PIN SET CONTINUING COSTING FENCE LINE A.O.C. LINE	U.S. PUBLIC LAND SURVEY RECORD PROJECT NAME: Jones County Rd Project C-544	HALL AND HALL ENGINEERS, INC. 209 29TH STREET DRIVE N.E. CEDAR RAPIDS, IOWA 52402 319-362-9548
DW: JSR CH: DTJ AP: DP: 5/23/94 SCALE: None PNC: PNO: 5294		

853200-090899

**UNITED STATES PUBLIC SECTION CORNER CERTIFICATION
AND LAND CORNER SURVEY
SECTION 20 T-85N R-3W**



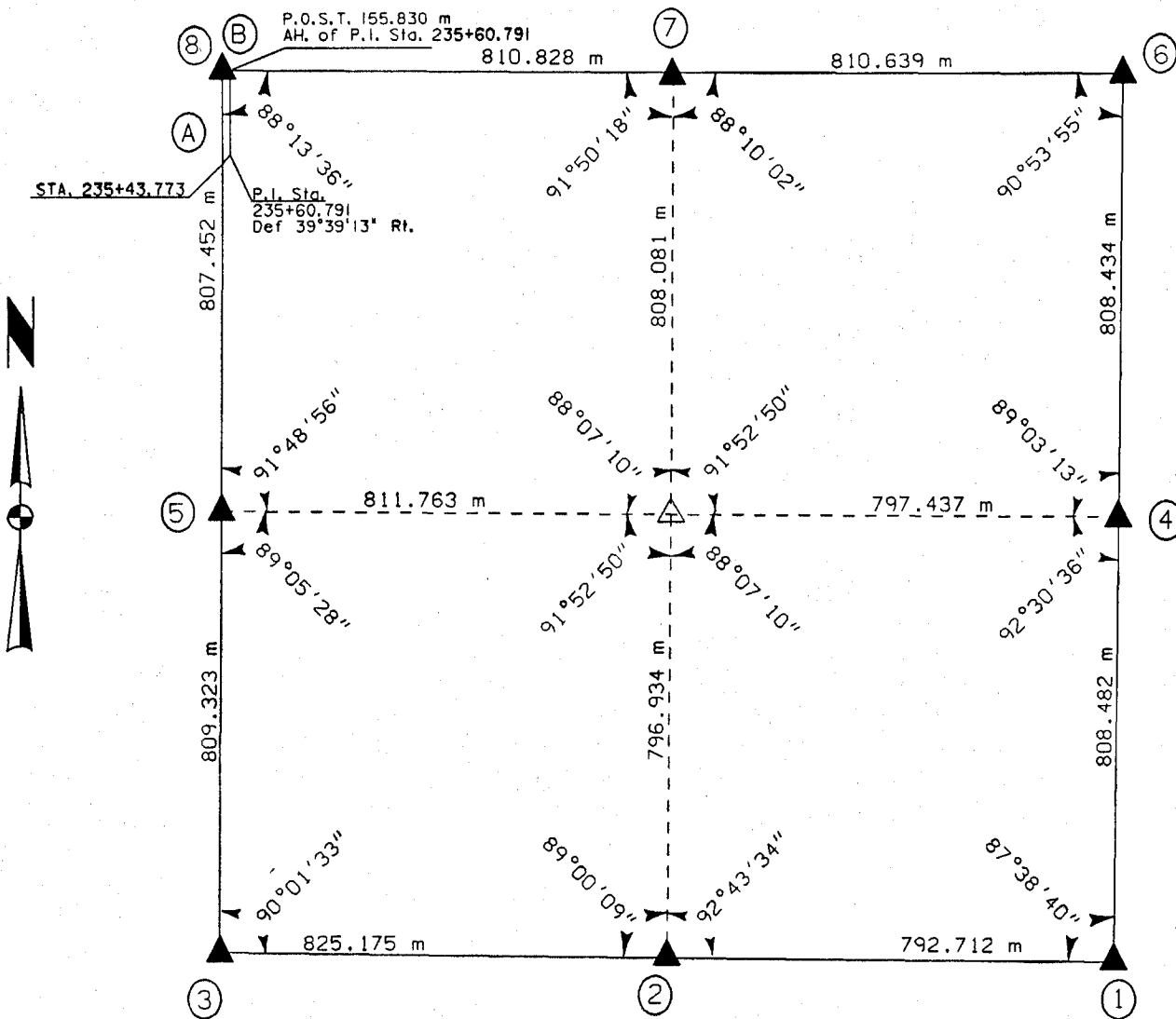
ALL TIES ARE ENGLISH UNLESS OTHERWISE NOTED

UNITED STATES PUBLIC SECTION CORNER CERTIFICATION
AND LAND CORNER SURVEY
SECTION 20 T-85N R-3W

MADE FOR
IOWA DEPARTMENT OF TRANSPORTATION FOR THE PURPOSE OF
RIGHT OF WAY DESCRIPTIONS ON PRIMARY ROAD No. U.S. 151

MADE BY
MICHAEL R. FAGLE R.L.S. No. 8505
JONES COUNTY, IOWA NHS-151-3(84)--19-57
APRIL 1998 THRU OCTOBER 1998

ALL DISTANCES WERE CAREFULLY MEASURED AND MAY NOT AGREE WITH ROAD SURVEY STATIONING



	I hereby certify that this Land Surveying document was prepared by me or under my direct personal supervision and that I am a duly Licensed Land Surveyor under the laws of the State of Iowa.	
	<i>Michael R. Fagle</i>	1-21-99
	MICHAEL R. FAGLE	Date
	License number 8505	
My license renewal date is December 31, 2000		
Pages or sheets covered by this seal: <u>Two (2)</u>		