

FEEBOOK: 2010 0383 2/16/2010 10:21 AM
 REC FEES: \$9.00
 PAGES: 1

Marie Krutzfield, Recorder
 Jones County, Iowa

TeKIPPE ENGINEERING, P.C., 1919 210th Street, P.O. Box 357, Manchester, Iowa 52057 Phone (563) 927-2060

UNITED STATES PUBLIC LAND SURVEY CORNER CERTIFICATE

OF

Land Survey Monuments situated in Section 21, Township 85 North, Range 3 West of the Fifth Principal Meridian, Jones County, Iowa.

Previously recorded in (1) None (2) None in County Recorder's Office.
 (book, page, document number, etc.)

(Show reason for preparing this certificate, the evidence and detailed procedures used in establishing the corner positions and monumentation found or placed.)

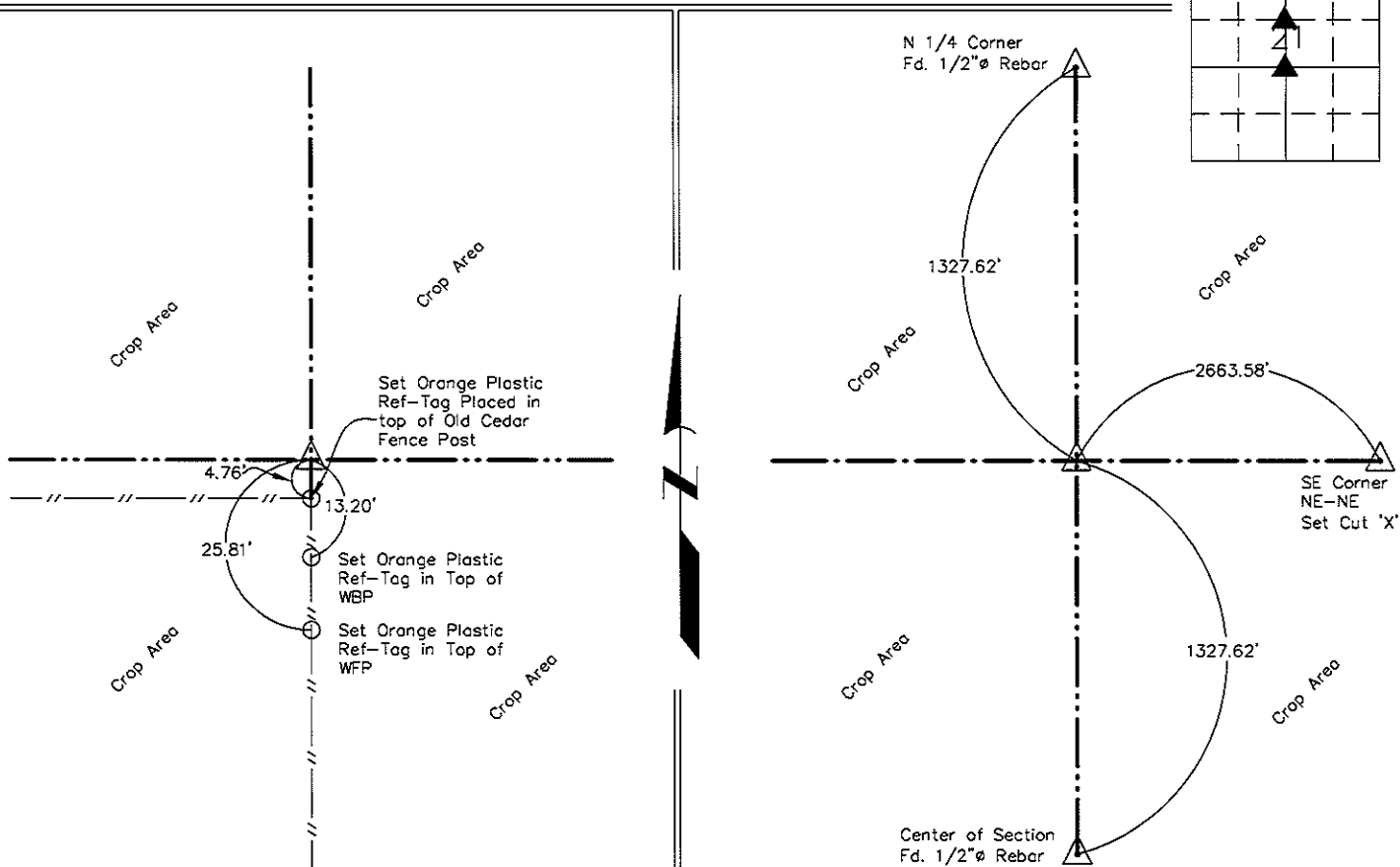
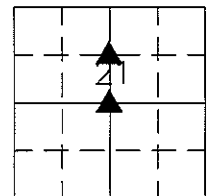
Monument Description and Remarks: (1) CTR OF SECTION 21-T85N-R3W: Set 1/2"Ø Rebar with 2"Ø Aluminum Cap at mathematical break down of Section. Found old Cedar Fence post at occupational center of section location. Searched at location for stone set by Henry D. Smith in May of 1862, no monument found at time of survey.

(2) SE Corner of the NE 1/4- NW 1/4 of Section 21-T85N-R3W: Set 1/2"Ø Rebar with 2"Ø Aluminum Cap PLS Number 7060 equidistant and online between the North Quarter Corner and the Center of Section. No other accessories available in area to tie from.

PLAN VIEW

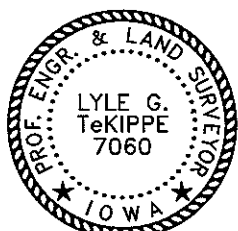
Project Number 102006.LS
 Field Book: Jones Co. Monticello
 No.1, Pages 26-27

Show a minimum of three reference ties to durable physical objects, relevant monuments and physical conditions that will enable recovery of the corner.



(1) CTR OF SECTION of Sec. 21-T85N-R3W
 Set 1/2" Rebar w/ Aluminum Cap LS No. 7060

(2) SE Corner of NE 1/4- NW 1/4 of Sec. 21-T85N-R3W
 Set 1/2" Rebar w/ Aluminum Cap LS No. 7060



I hereby certify that this land surveying document was prepared and the related survey work was performed by me or under my direct personal supervision and that I am a duly licensed Land Surveyor under the laws of the State of Iowa.

Lyle G. TeKippe 2-11-10
 Lyle G. TeKippe Date

License Number 7060
 My license renewal date is December 31, 2008.
 Sheets covered by this seal: Individual

List Corners to be Indexed

| Corners | Section | Twp. | Range |
|-------------------------|---------|------|-------|
| CTR OF SECTION | 21 | 85N | 3W |
| SE Corner NE 1/4-NW 1/4 | 21 | 85N | 3W |