

Instrument #: 2015-3128  
 10/30/2015 10:21:15 AM Total Pages: 1  
 ZSC SECTION CORNER CERTIFICATE  
 Recording Fee: \$7.00 Transfer Tax: \$0  
 Sheri L. Jones, Recorder, Jones County Iowa



Prepared by/Return to: FEHR GRAHAM, 1919 210th Street, Manchester IA 52057 - Ph: (563)927-2060

UNITED STATES PUBLIC LAND SURVEY CORNER CERTIFICATE

OF

Land Survey Monuments situated in Section 21, Township 85 North, Range 3 West of the Fifth Principal Meridian, Jones County, Iowa.

Previously recorded in (1) Bk. 2010, Pg. 0381 (2) Bk. 2008, Pg. 1875 in County Recorder's Office.  
 (book, page, document number, etc.)

(Show reason for preparing this certificate, the evidence and detailed procedures used in establishing the corner positions and monumentation found or placed.)

Monument Description and Remarks: (1) SE Corner of the NE1/4-NE1/4 of Section 21-T85N-R3W:

Section corner information was obtained before and set after concrete overlay project. Found cut "x" in P.C.C. pavement before P.C.C. overlay. Set mag nail in cut "x" in P.C.C. pavement and three new ties.

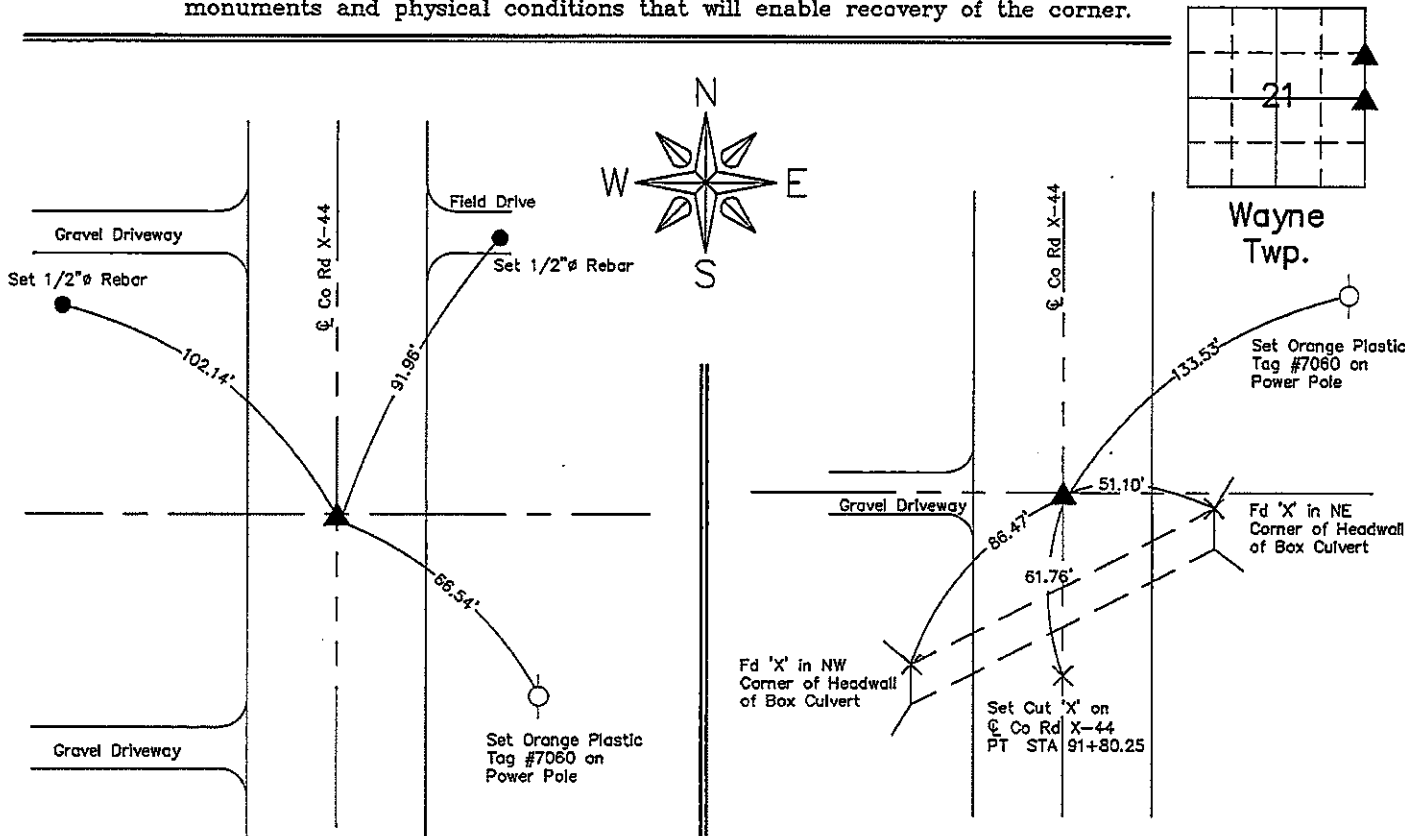
(2) E1/4 Corner of Section 21-T85N-R3W:

Section corner information was obtained before and set after concrete overlay project. Found 5/8" rebar with orange plastic cap with #11310 before P.C.C. overlay. Set mag nail in cut "x" in P.C.C. pavement and two new ties.

PLAN VIEW

Project Number 15-321

Show a minimum of three reference ties to durable physical objects, relevant monuments and physical conditions that will enable recovery of the corner.



(1) SE Corner of the NE1/4-NE1/4 of Sec. 21-T85N-R3W

Set Mag Nail in Cut "X" in P.C.C. Pavement

(2) E1/4 Corner of Sec. 21-T85N-R3W

Set Mag Nail in Cut "X" in P.C.C. Pavement

PROF. ENGINEER & LAND SURVEYOR  
 LYLE G. TeKIPPE  
 7060  
 IOWA

I hereby certify that this land surveying document was prepared and the related survey work was performed by me or under my direct personal supervision and that I am a duly licensed Land Surveyor under the laws of the State of Iowa.

*Lyle G. TeKippe* 10-28-15  
 Lyle G. TeKippe, P.E. & P.L.S. Date  
 License Number: 7060  
 My license renewal date is December 31, 2016.  
 Sheets covered by this seal: This Sheet Only

List Corners to be Indexed			
Corners	Section	Twp.	Range
SE of NE1/4-NE1/4	21	85N	3W
E1/4	21	85N	3W

G:\C3D\15\15-321\15-321-LEGAL.dwg

Marie Krutzfield, Recorder  
 Jones County, Iowa

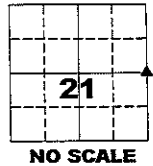
PREPARED BY  
 CLARENCE J. WALTON, JONES COUNTY ENGINEER'S OFFICE, 19501 HWY. 64, ANAMOSA, IOWA, 52205 (319) 462-3785

**UNITED STATES PUBLIC LAND  
 SURVEY CORNER CERTIFICATE**  
**LAND SURVEY MONUMENTS SITUATED IN SECTION 21, TOWNSHIP 85 NORTH,  
 RANGE 3 WEST OF THE 5TH PRINCIPAL MERIDIAN, JONES COUNTY, IOWA.**

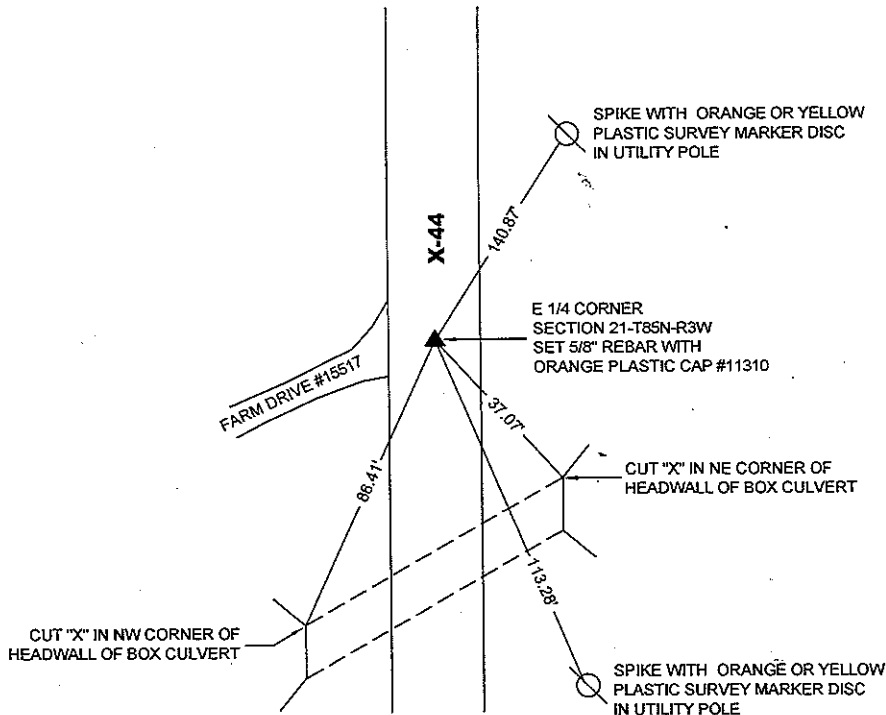
**OFFICE FILE NO.**

**CORNER SECTION TOWNSHIP RANGE**  
 E 1/4 21 85N 3W

**STATE PLANE COORDINATE**  
 NAD 83 IOWA NORTH  
 N 3529071.88  
 E 5547527.86



**NOTE:**  
 THE STATE PLANE COORDINATE AS INDICATED IS FOR CONVENIENCE ONLY.  
 THE TIES AS SHOWN SHOULD BE USED TO REPLACE THE CORNER, IF  
 DESTROYED



PREVIOUSLY RECORDED IN BOOK 2001, PAGE 1604

**MONUMENT DESCRIPTION AND HOW ESTABLISHED** RESET CORNER FOLLOWING CONSTRUCTION OF BOX CULVERT. REPLACED PREVIOUS MONUMENT WITH 5/8" REBAR WITH ORANGE PLASTIC CAP #11310 UTILIZING EXISTING SURVEY CONTROL DATA.



I hereby certify that this land surveying document and the related survey work was performed by me or under my direct personal supervision and that I am a duly registered Land Surveyor under the laws of the State of Iowa.

Signed: *Clarence J. Walton* 6/20/08  
 Clarence J. Walton, L.S.  
 My Registration Renewal Date is December 31, 2009  
 Iowa License Number 11310  
 Pages or sheets covered by this seal: 1 of 1.

- A. THERE IS NO CERTIFICATE FOR THE CORNER ON FILE WITH THE RECORDER OF THE COUNTY IN WHICH THE CORNER IS LOCATED.
- B. THE CORNER MONUMENT HAS BEEN REPLACED OR MODIFIED.
- C. THE SURVEYOR IN RESPONSIBLE CHARGE OF THE LAND SURVEYING ACCEPTS A CORNER POSITION THAT DIFFERS FROM THAT SHOWN IN THE PUBLIC RECORDS OF THE COUNTY IN WHICH THE CORNER IS LOCATED.
- D. THE REFERENCE TIES REFERRED TO IN AN EXISTING PUBLIC RECORD NO LONGER EXIST.

CORNER	CORNERS TO BE INDEXED		
	SECTION	TOWNSHIP	RANGE
E 1/4	21	85N	3W
W 1/4	22	85N	3W

**JONES COUNTY ENGINEER'S OFFICE**



19501 HWY. 64, ANAMOSA, IOWA 52205  
 (319) 462-3785

2001 1604

FILED  
RECORDERS OFFICE  
JONES COUNTY IOWA

01 MAY 15 AM 10:20

MARIE KRUTZFIELD  
RECORDER *No Fee*

J.D. TJEPKES, LS. JONES COUNTY ENGINEER'S OFFICE, 19501 HWY. 64, ANAMOSA, IOWA, 52205 (319)462-3785

# UNITED STATES PUBLIC LAND SURVEY CORNER CERTIFICATE

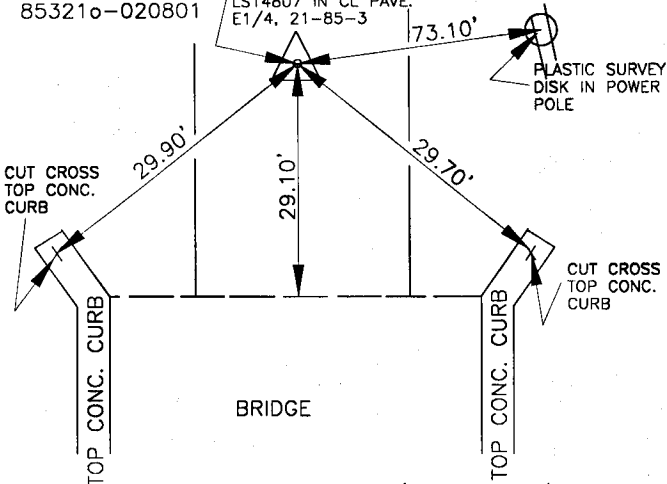
LAND SURVEY MONUMENTS SITUATED IN SECTION 21, TOWNSHIP 85  
NORTH, RANGE 3 WEST OF THE 5TH P.M., JONES COUNTY, IOWA

### CORNERS TO BE INDEXED

CORNER SECTION TOWNSHIP RANGE  
EAST 1/4 21 85N 3W  
OFFICE FILE NO. 853210-020801



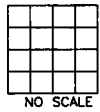
SET 5/8"x24" RBR.  
WITH YELLOW CAP  
LS14807 IN CL. PAVE.  
E1/4, 21-85-3



PREVIOUSLY RECORDED IN BOOK N/A, PAGE N/A  
MONUMENT DESCRIPTION AND HOW ESTABLISHED SET 5/8"x  
24" REBAR WITH YELLOW CAP LS 14807 IN CL. PAVEMENT PER  
COUNTY ENGINEER ROW PLAT OF PROJ. NO. 1618, DATED 5-8-1962  
AT STATION 92+43 AS TIED OUT DURING PROJECT SURVEY. SET  
SET REFERENCE POINTS AND TIED OUT AS INDICATED.

### CORNERS TO BE INDEXED

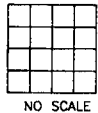
CORNER SECTION TOWNSHIP RANGE  
OFFICE FILE NO.



PREVIOUSLY RECORDED IN BOOK \_\_\_\_\_, PAGE \_\_\_\_\_  
MONUMENT DESCRIPTION AND HOW ESTABLISHED \_\_\_\_\_

### CORNERS TO BE INDEXED

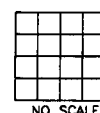
CORNER SECTION TOWNSHIP RANGE  
OFFICE FILE NO.



PREVIOUSLY RECORDED IN BOOK \_\_\_\_\_, PAGE \_\_\_\_\_  
MONUMENT DESCRIPTION AND HOW ESTABLISHED \_\_\_\_\_

### CORNERS TO BE INDEXED

CORNER SECTION TOWNSHIP RANGE  
OFFICE FILE NO.



PREVIOUSLY RECORDED IN BOOK \_\_\_\_\_, PAGE \_\_\_\_\_  
MONUMENT DESCRIPTION AND HOW ESTABLISHED \_\_\_\_\_

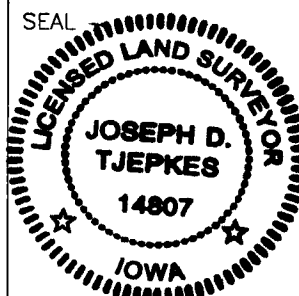
I hereby declare that this plat, survey or report was made by me or under my direct personal supervision and that I am a duly registered Land Surveyor under the laws of the State of Iowa.

Signed:

*Joseph D. Tjepkes* 2-8-01

Joseph D. Tjepkes L.S. Iowa Reg. No. 14807  
My Registration Renewal Date is December 31, 2002

SEAL



J.D. TJEPKES LS 14807  
JONES COUNTY  
ENGINEER'S OFFICE

19501 HWY. 64,  
ANAMOSA, IOWA,  
52205 (319)462-3785