

Instrument #: 2015-3127  
 10/30/2015 10:21:15 AM Total Pages: 1  
 ZSC SECTION CORNER CERTIFICATE  
 Recording Fee: \$7.00 Transfer Tax: \$0  
 Sheri L. Jones, Recorder, Jones County Iowa



Prepared by/Return to: FEHR GRAHAM, 1919 210th Street, Manchester IA 52057 - Ph: (563)927-2060

UNITED STATES PUBLIC LAND SURVEY CORNER CERTIFICATE

OF

Land Survey Monuments situated in Section 16, Township 85 North, Range 3 West of the Fifth Principal Meridian, Jones County, Iowa.

Previously recorded in (1) Bk. 1999, Pg. 3194 (2) Bk. 1999, Pg. 3193 in County Recorder's Office.  
 (book, page, document number, etc.)

(Show reason for preparing this certificate, the evidence and detailed procedures used in establishing the corner positions and monumentation found or placed.)

Monument Description and Remarks: (1) E1/4 Corner of Section 16-T85N-R3W:

Section corner information was obtained before and set after concrete overlay project. Found cut "x" and concrete nail in pavement before P.C.C. overlay. Set mag nail in cut "x" in P.C.C. pavement and three new ties.

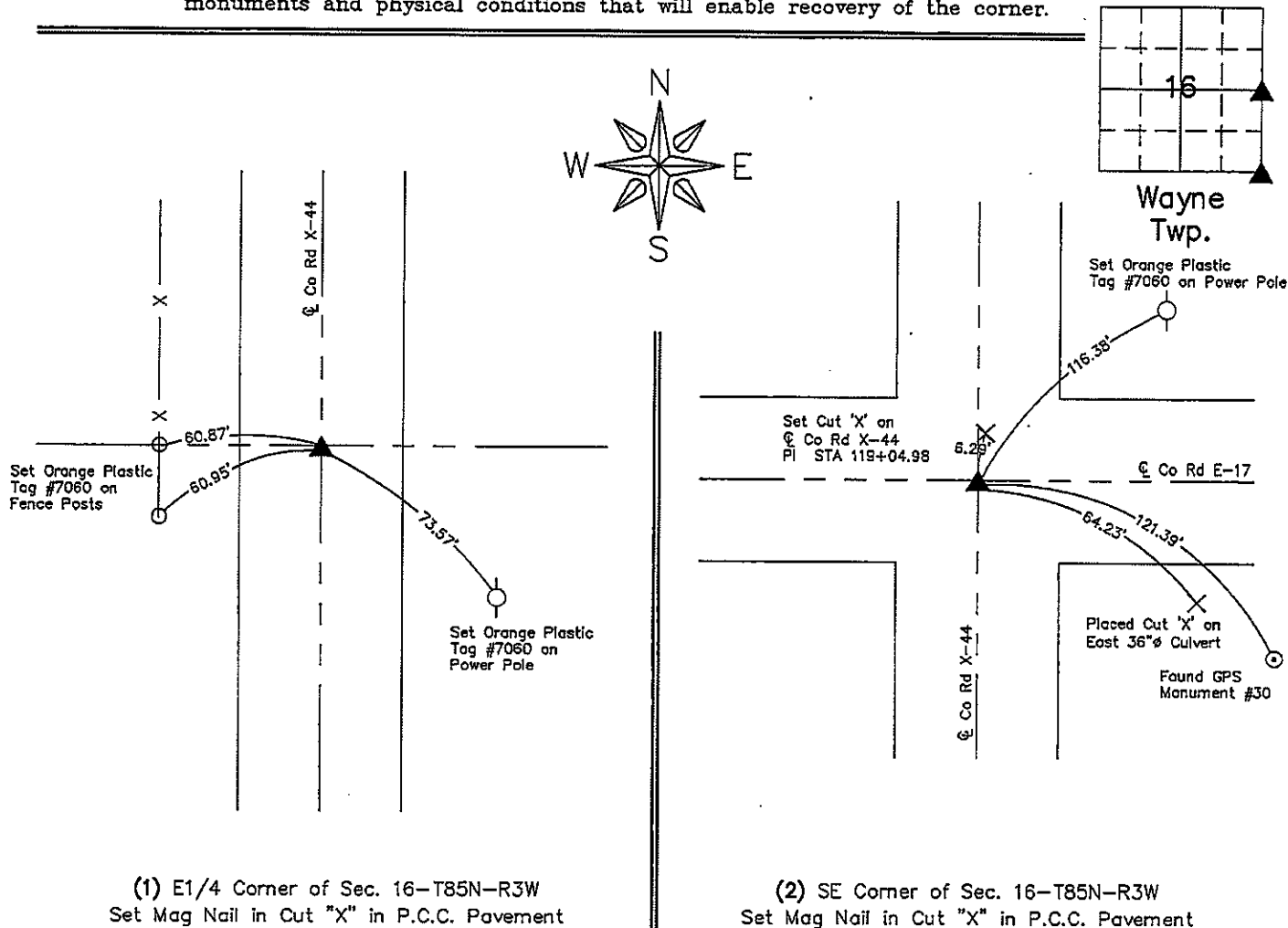
(2) SE Corner of Section 16-T85N-R3W:

Section corner information was obtained before and set after concrete overlay project. Found PK nail before P.C.C. overlay. Set mag nail in cut "x" in P.C.C. pavement and three new ties.

PLAN VIEW

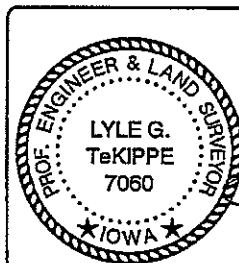
Project Number 15-321

Show a minimum of three reference ties to durable physical objects, relevant monuments and physical conditions that will enable recovery of the corner.



(1) E1/4 Corner of Sec. 16-T85N-R3W  
 Set Mag Nail in Cut "X" in P.C.C. Pavement

(2) SE Corner of Sec. 16-T85N-R3W  
 Set Mag Nail in Cut "X" in P.C.C. Pavement



I hereby certify that this land surveying document was prepared and the related survey work was performed by me or under my direct personal supervision and that I am a duly licensed Land Surveyor under the laws of the State of Iowa.

*Lyle G. TeKippe* 10-28-15  
 Lyle G. TeKippe, P.E. & L.S. Date  
 License Number: 7060  
 My license renewal date is December 31, 2016.  
 Sheets covered by this seal: This Sheet Only

List Corners to be Indexed			
Corners	Section	Twp.	Range
E1/4	16	85N	3W
SE	16	85N	3W

G:\C30\15\15-321\15-321-LEGAL.dwg

2003 4163

FILED  
RECORDERS OFFICE  
JONES COUNTY IOWA

03 AUG 28 AM 9:49

MARIE KRUTZFIELD  
RECORDER NO FEE

J.D. Tjepkes, LS. JONES COUNTY ENGINEER'S OFFICE, 19501 HWY. 64, ANAMOSA, IOWA, 52205 (319)462-3785

# UNITED STATES PUBLIC LAND SURVEY CORNER CERTIFICATE

LAND SURVEY MONUMENTS SITUATED IN SECTION 21, TOWNSHIP 85  
NORTH, RANGE 3 WEST OF THE 5TH P.M., JONES COUNTY, IOWA

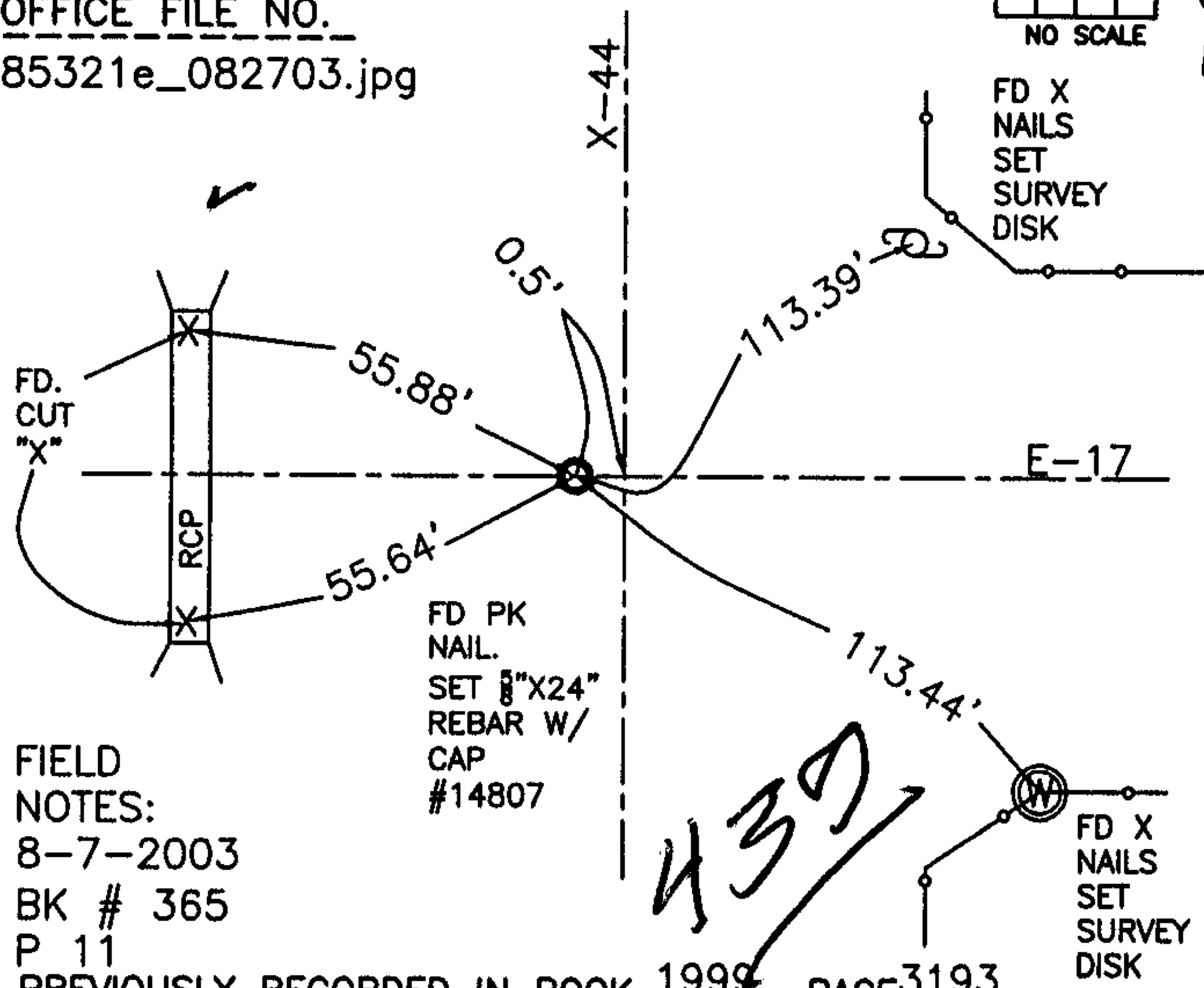
### CORNERS TO BE INDEXED

CORNER SECTION TOWNSHIP RANGE  
NE 21 85N 3W

OFFICE FILE NO.  
85321e\_082703.jpg



NO SCALE



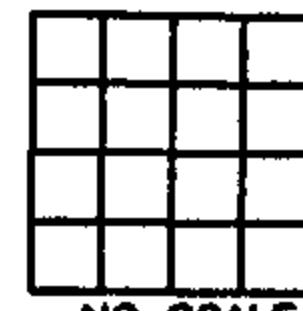
FIELD NOTES:  
8-7-2003  
BK # 365  
P 11

PREVIOUSLY RECORDED IN BOOK 1999, PAGE 3193  
MONUMENT DESCRIPTION AND HOW ESTABLISHED  
PER TIES IN RECORDERS OFFICE, DOC. #1999-3193, FROM LS#11954  
(JOHNSON) FOUND PK NAIL 0.5' WEST OF CENTERLINE IN JOINT OF X-44.  
DRILLED INTO PC PAVEMENT AND SET 1/2" X 24" REBAR W/CAP #14807.  
RETIED AS INDICATED.

### CORNERS TO BE INDEXED

CORNER SECTION TOWNSHIP RANGE

OFFICE FILE NO.



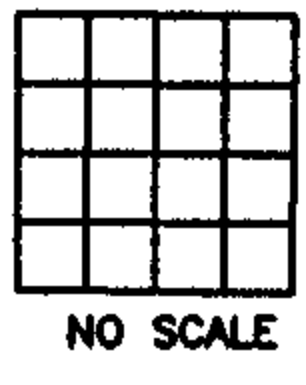
NO SCALE

PREVIOUSLY RECORDED IN BOOK \_\_\_\_\_, PAGE \_\_\_\_\_  
MONUMENT DESCRIPTION AND HOW ESTABLISHED \_\_\_\_\_

### CORNERS TO BE INDEXED

CORNER SECTION TOWNSHIP RANGE

OFFICE FILE NO.



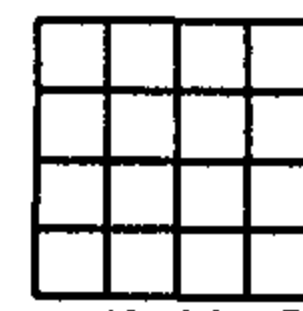
NO SCALE

PREVIOUSLY RECORDED IN BOOK \_\_\_\_\_, PAGE \_\_\_\_\_  
MONUMENT DESCRIPTION AND HOW ESTABLISHED \_\_\_\_\_

### CORNERS TO BE INDEXED

CORNER SECTION TOWNSHIP RANGE

OFFICE FILE NO.



NO SCALE

PREVIOUSLY RECORDED IN BOOK \_\_\_\_\_, PAGE \_\_\_\_\_  
MONUMENT DESCRIPTION AND HOW ESTABLISHED \_\_\_\_\_

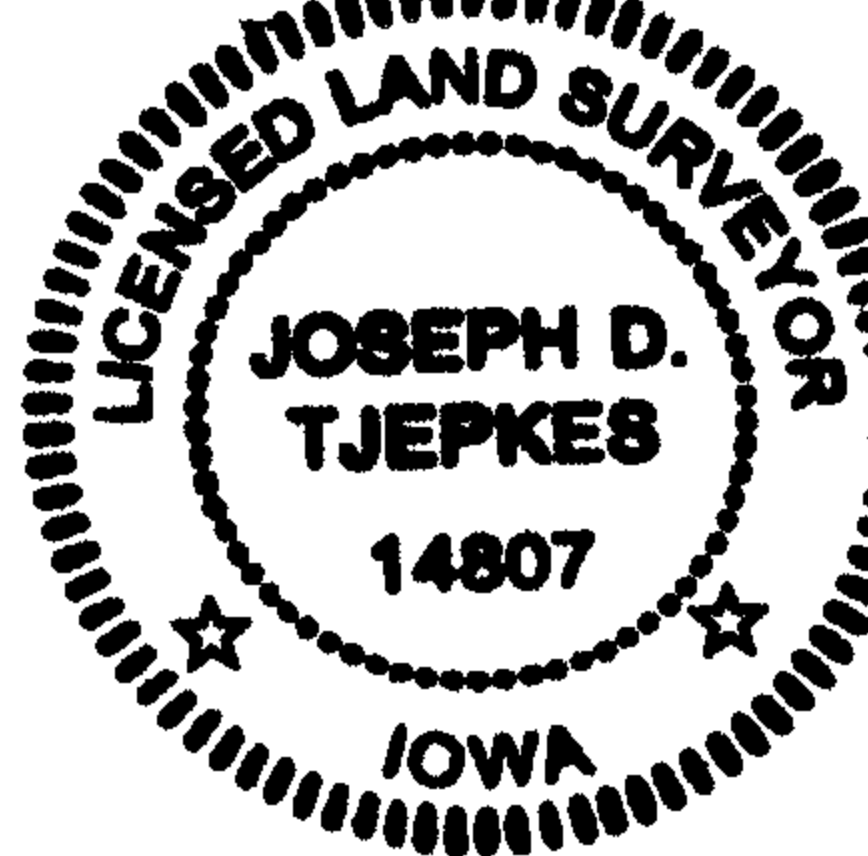
I hereby declare that this plat, survey or report was made by me or under my direct personal supervision and that I am a duly registered Land Surveyor under the laws of the State of Iowa.

Signed:

*Joseph D. Tjepkes* 8-27-08

Joseph D. Tjepkes L.S. Iowa Reg. No. 14807  
My Registration Renewal Date is December 31, 2004

SEAL



J.D. Tjepkes LS 14807  
JONES COUNTY  
ENGINEER'S OFFICE

19501 HWY. 64,  
ANAMOSA, IOWA,  
52205 (319)462-3785

# SECTION CORNER CERTIFICATE

OF  
 LAND SURVEY MONUMENTS SITUATED IN SECTION 16, TOWNSHIP 85 NORTH,  
 RANGE 3 WEST, OF THE FIFTH PRINCIPAL MERIDIAN, JONES, COUNTY, IOWA.

PREVIOUSLY RECORDED IN BOOK \_\_\_\_\_ AT PAGE \_\_\_\_\_

FOR RECORDER'S USE

**REASON FOR PREPARING CERTIFICATE:**

- A) THERE IS NO CERTIFICATE FOR THE CORNER ON FILE WITH THE RECORDER OF THE COUNTY IN WHICH THE CORNER IS LOCATED.
- B) CORNER POSITION DIFFERS FROM THAT SHOWN IN THE PUBLIC RECORDS OF THE COUNTY IN WHICH THE CORNER IS LOCATED.
- C) THE CORNER MONUMENT HAS BEEN REPLACED OR MODIFIED.
- D) THE REFERENCE TIES REFERRED TO IN AN EXISTING PUBLIC RECORD ARE INCORRECT.

**1999 3193**

FILED  
 RECORDERS OFFICE  
 JONES COUNTY IOWA

99 SEP -8 AM 10: 25

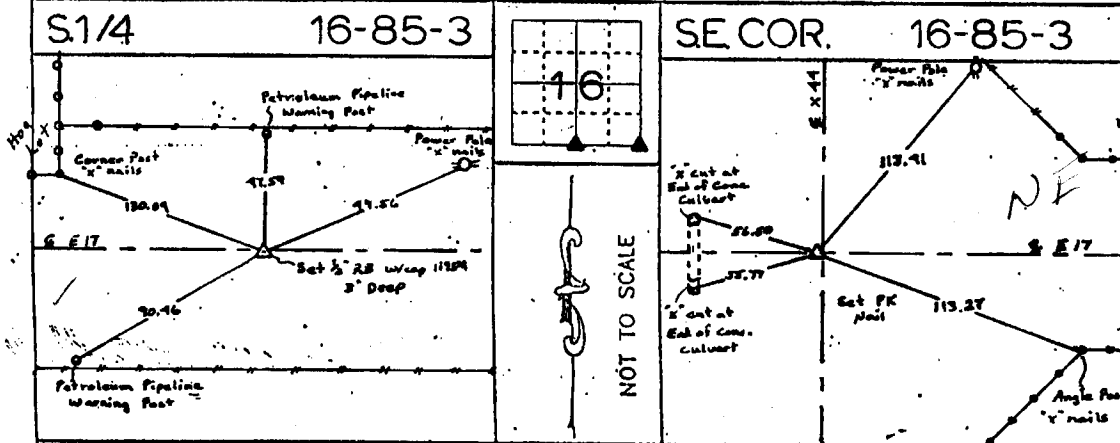
MARIE KRUTZFIELD *6.00 pd*  
 RECORDER

**MONUMENT DESCRIPTION AND REMARKS :**

South 1/4 Section 16 - Township 85 North - Range 3 West Set 1/2 Rebar w/cap 11954  
 2" Deep 1" South of E

Southeast Corner Section 16 - Township 85 North - Range 3 West Set PK Nail 0.5' West  
 of E x 44

**RECOVERY TIE DRAWING**



DANIEL J. JOHNSON, - CERTIFY THAT THE CORNER LOCATION(S) SHOWN ON THIS RECORD WERE DETERMINED BY ME OR UNDER MY DIRECTION AND CONTROL AND THAT THIS U.S. PUBLIC LAND SURVEY MONUMENT RECORD IS CORRECT AND COMPLETE TO THE BEST OF MY KNOWLEDGE AND BELIEF.



*Daniel J. Johnson* 9-8-99  
 DANIEL J. JOHNSON L.S. NO 11954 DATE

DZMOMF 4-2-99	U.S. PUBLIC LAND SURVEY RECORD PROJECT FILE: Jones County C-544	HALL AND HALL ENGINEERS, INC. 209 20TH STREET N.E. CEDAR RAPIDS, IOWA 52402 (319) 362-9548
1/2" X 1/2" W/ L.S. CAP SET --- EXISTING FENCE LINE --- PROPERTY LINE	SHEET FILE: PROJECT FILE:	DATE: 8/18/94 SCALE: None P. NO.: 5294

85321e-090899  
 85321e-090899

# SECTION CORNER CERTIFICATE

OF  
 LAND SURVEY MONUMENTS SITUATED IN SECTION 22, TOWNSHIP 85 NORTH,  
 RANGE 3 WEST, OF THE FIFTH PRINCIPAL MERIDIAN, Jones, COUNTY, IOWA.

PREVIOUSLY RECORDED IN BOOK \_\_\_\_\_ AT PAGE \_\_\_\_\_ .

FOR RECORDER'S USE

**REASON FOR PREPARING CERTIFICATE:**

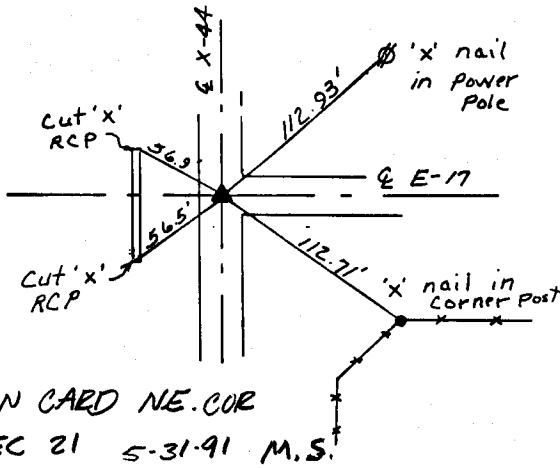
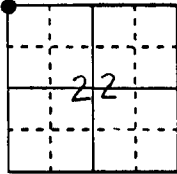
- A) THERE IS NO CERTIFICATE FOR THE CORNER ON FILE WITH THE RECORDER OF THE COUNTY IN WHICH THE CORNER IS LOCATED.
- B) CORNER POSITION DIFFERS FROM THAT SHOWN IN THE PUBLIC RECORDS OF THE COUNTY IN WHICH THE CORNER IS LOCATED.
- C) THE CORNER MONUMENT HAS BEEN REPLACED OR MODIFIED.
- D) THE REFERENCE TIES REFERRED TO IN AN EXISTING PUBLIC RECORD ARE INCORRECT.

**MONUMENT DESCRIPTION AND REMARKS :**

Set Concrete Nail for NW Corner - 22-85-3

## RECOVERY TIE DRAWING

NW Corner 22-85-3



NOT TO SCALE

I, GLEN D. MEISNER, CERTIFY THAT THE CORNER LOCATION(S) SHOWN ON THIS RECORD WERE DETERMINED BY ME OR UNDER MY DIRECTION AND CONTROL AND THAT THIS U.S. PUBLIC LAND SURVEY MONUMENT RECORD IS CORRECT AND COMPLETE TO THE BEST OF MY KNOWLEDGE AND BELIEF.



Glen D. Meisner 1-2-91  
 GLEN D. MEISNER L.S. NO 8165 DATE

85321e-010291

DZ1001	△ GOVERNMENT CORNER ○ 5/8" TIE PIN SET --- CENTERLINE -x-x- EXISTING FENCE LINE - - - R.O.W. LINE	SHEET TITLE: <b>U.S. PUBLIC LAND SURVEY RECORD</b> PROJECT TITLE:	<b>HALL AND HALL ENGINEERS, INC.</b> 226 29TH STREET DRIVE S.E. CEDAR RAPIDS, IOWA 52403 319-362-9548
	D W N GDM	A P P DATE 1-2-91 SCALE None	