

Instrument #: 2016-1407
 05/27/2016 10:23:52 AM Total Pages: 1
 ZSC SECTION CORNER CERTIFICATE
 Recording Fee: \$7.00 Transfer Tax: \$0
 Sheri L. Jones, Recorder, Jones County Iowa



PREPARED BY: RANDALL L. RATTENBORG 105 WEST MAIN STREET MANCHESTER, IA 52057, 563-927-2434

UNITED STATES PUBLIC LAND SURVEY CORNER CERTIFICATE

Land Survey Monuments situated in Section 23, Township 85 North, Range 3 West of the Fifth Principal Meridian,
Jones County, Iowa.

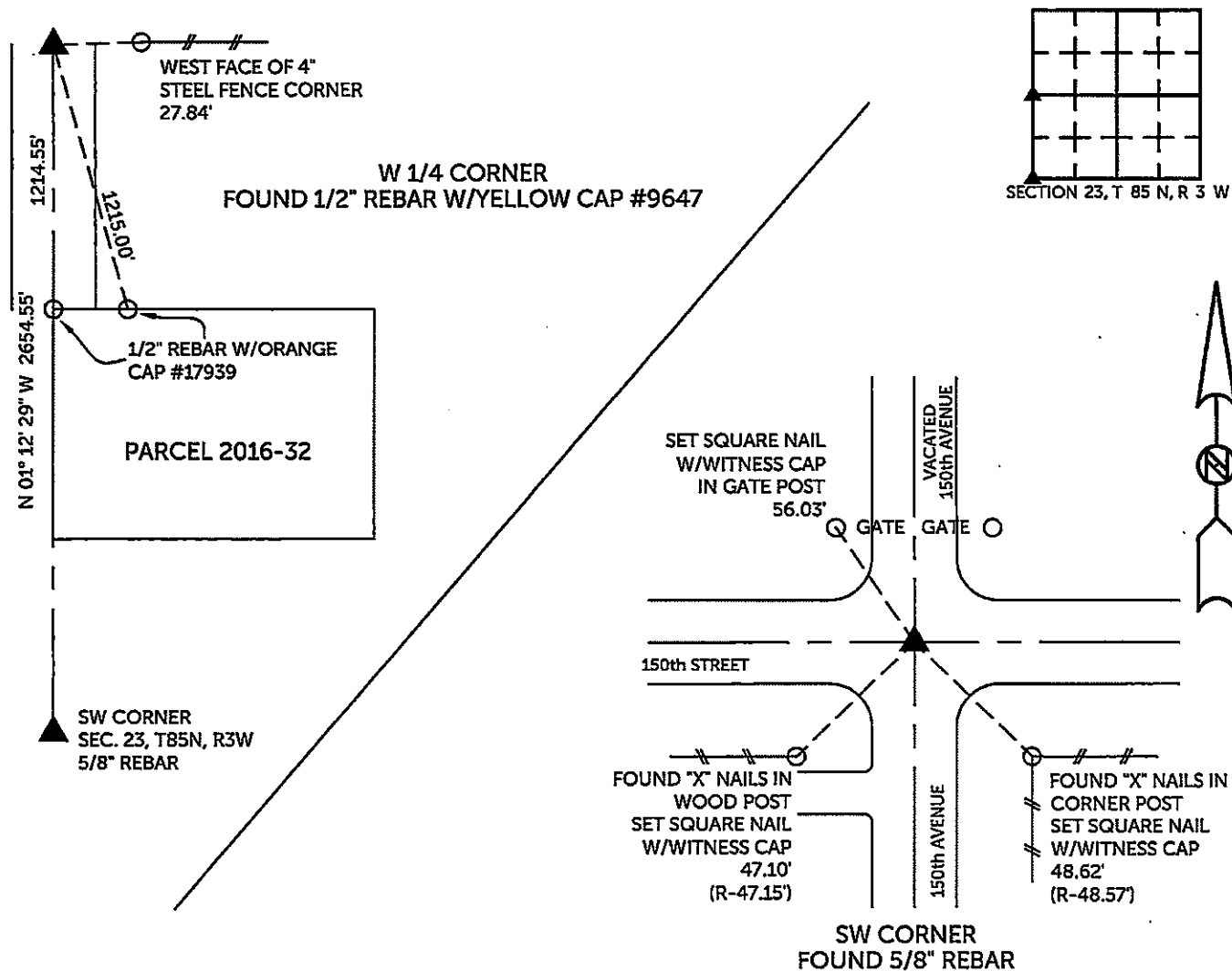
Previously recorded in County Recorder's Office in SEE DESCRIPTIONS OF CORNERS
(book, page, document number, etc.)

SW CORNER, Found 5/8" rebar. Previous Corner Certificate recorded in File 97 98, Page 1649. Corner being re-tied due to missing tie objects.

W 1/4 CORNER, Found 1/2" rebar w/yellow cap #9647. Previous Corner Certificate recorded in Book 2002, Page 1382. Corner being re-tied due to missing tie objects.

PLAN VIEW

(Show a minimum of three reference ties to durable physical objects, relevant monuments and physical conditions that will enable recovery of the corner.)

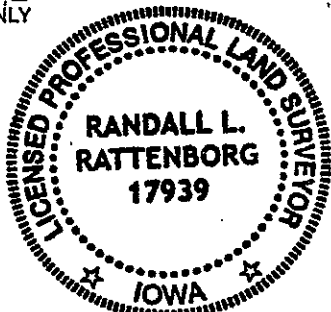


TIES ARE TO PLAT OF PARCEL 2016-32
 IN SECTION 23, T 85 N, R 3 W

BURRINGTON GROUP, INC. PROJECT NO.16-053

I HEREBY CERTIFY THAT THIS LAND SURVEYING DOCUMENT
 WAS PREPARED AND THE RELATED SURVEY WORK WAS
 PERFORMED BY ME OR UNDER MY DIRECT PERSONAL
 SUPERVISION AND THAT I AM A DULY LICENSED PROFESSIONAL
 LAND SURVEYOR UNDER THE LAWS OF THE STATE OF IOWA.

SEAL COVERS THIS SHEET ONLY



[Signature] *5/26/2016*
 Randall L. Rattenborg, P.L.S. License #17939 Date
 My license renewal date is December 31, 2017

List Corners to be Indexed: Section Township Range
 SW CORNER 23 T 85N R 3 W
 W 1/4 CORNER

BURRINGTON GROUP, INC.
 Civil Engineering | Land Surveying
 105 W. Main Street Manchester, Iowa 52057

2002 1382

FILED
RECORDERS OFFICE
JONES COUNTY IOWA

02 APR -5 AM 11:10

MARIE KRUTZFIELD
RECORDER *b.o.s Pd*

PREPARED BY

STEPHEN MICHAEL BRAIN, BRAIN ENGINEERING, INC., 777 10TH STREET, MARION, IOWA 52302 PH. (319) 373-1318

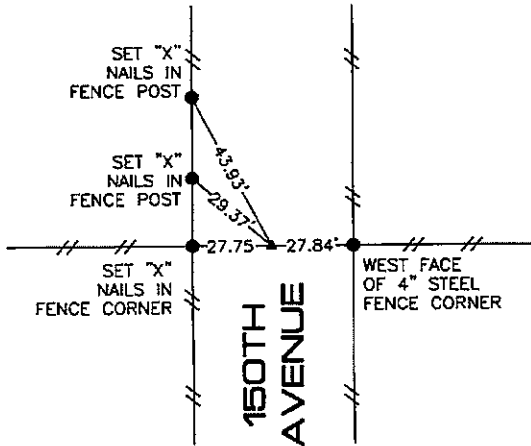
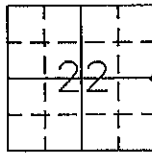
UNITED STATES PUBLIC LAND SURVEY CORNER CERTIFICATE

LAND SURVEY MONUMENTS SITUATED IN SECTION 22, TOWNSHIP 85 NORTH
RANGE 3 WEST OF THE 5TH P.M., _____ JONES _____ COUNTY, IOWA.

NO SCALE



E 1/4 CORNER



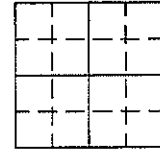
PREVIOUSLY RECORDED IN BOOK _____ PAGE _____

MONUMENT DESCRIPTION AND HOW ESTABLISHED _____

DUG HOLE, FOUND NOTHING. SET 1/2" REBAR W/ YELLOW CAP # 9647

AT SPLIT OF RIGHT-OF-WAY FENCE IN LINE OF E-W FENCES.

NO SCALE



PREVIOUSLY RECORDED IN BOOK _____ PAGE _____

MONUMENT DESCRIPTION AND HOW ESTABLISHED _____



I hereby certify that this land surveying document and the related survey work was performed by me or under my direct personal supervision and that I am a duly licensed Land Surveyor under the laws of the State of Iowa.

Signed *Stephen Michael Brain* Date *4/3/02*
Stephen Michael Brain, L.S.
My License Renewal Date is December 31, 2002
License Number 9647
Pages or sheets covered by this seal: 1/1

- A. THERE IS NO CERTIFICATE FOR THE CORNER ON FILE WITH THE RECORDER OF THE COUNTY IN WHICH THE CORNER IS LOCATED
- B. THE SURVEYOR IN RESPONSIBLE CHARGE OF THE LAND SURVEYING ACCEPTS A CORNER POSITION WHICH DIFFERS FROM THAT SHOWN IN THE PUBLIC RECORDS OF THE COUNTY IN WHICH THE CORNER IS LOCATED.
- C. THE CORNER MONUMENT IS REPLACED OR MODIFIED IN ANY WAY.
- D. THE REFERENCE TIES REFERRED TO IN AN EXISTING PUBLIC RECORD ARE NOT CORRECT.

CORNERS TO BE INDEXED

CORNER	SECTION	TOWNSHIP	RANGE
E 1/4 CORNER	22	T85N	R3W

BRAIN ENGINEERING, INC.

777 10TH STREET
MARION, IOWA 52302 22502-10
(319) 373-1318