

2003 1350

FILED
RECORDERS OFFICE
JONES COUNTY IOWA

03 MAR 31 AM 9:51

MARIE KRUTZFIELD
RECORDER 6:00pm

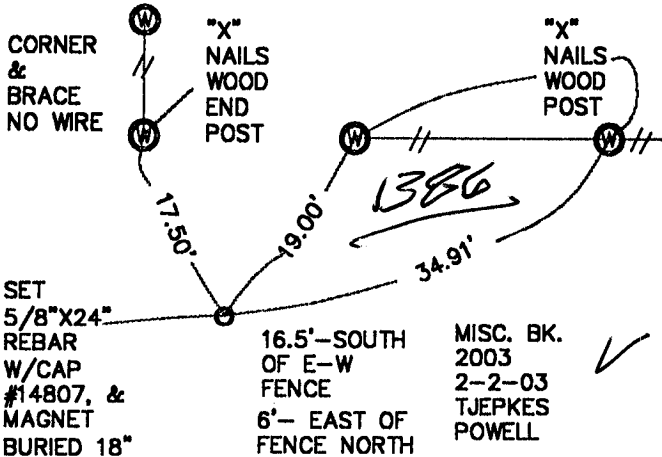
J.D. Tjepkes, LS.14807, 23428 RIDGE ROAD, ANAMOSA, IOWA, 52205. (319-462-6067)

UNITED STATES PUBLIC LAND SURVEY CORNER CERTIFICATE

LAND SURVEY MONUMENTS SITUATED IN SECTION 14, TOWNSHIP 85
NORTH, RANGE 3 WEST OF THE 5TH P.M., JONES COUNTY, IOWA

CORNERS TO BE INDEXED

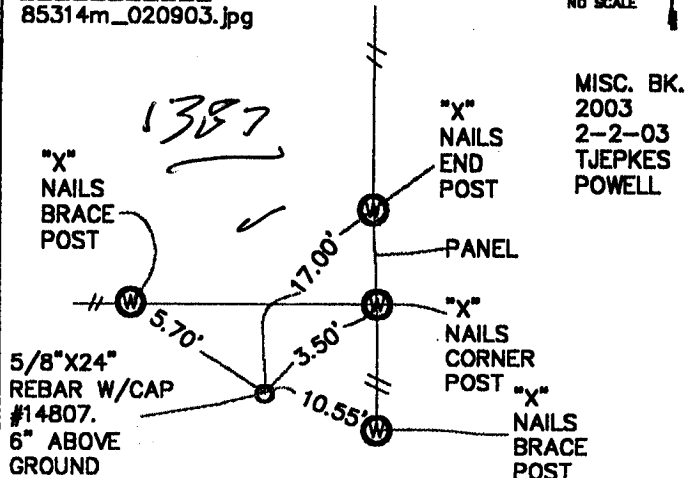
CORNER SECTION TOWNSHIP RANGE
NW 1/4 SE 1/4 SE 1/4 14 85N 3W
OFFICE FILE NO.
85314s_020903.jpg



PREVIOUSLY RECORDED IN BOOK NA PAGE NA
MONUMENT DESCRIPTION AND HOW ESTABLISHED
PER BREAKDOWN OF SECTION 14 T85N R3W, SET
5/8"X24" REBAR W/CAP #14807 & MAGNET BURIED 18"
IN CULTIVATED FIELD. TIED AS INDICATED.

CORNERS TO BE INDEXED

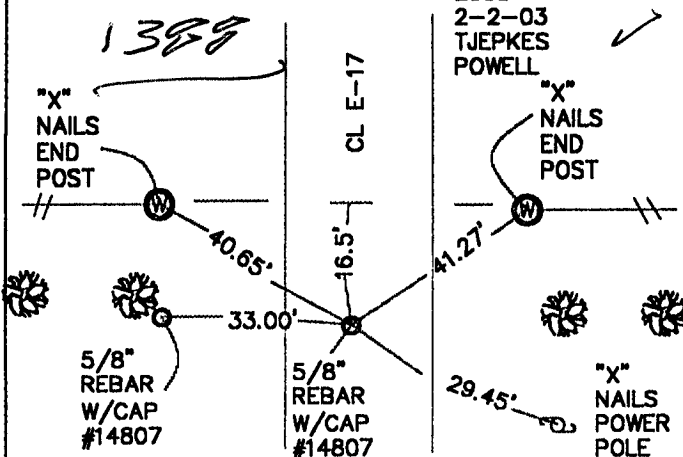
CORNER SECTION TOWNSHIP RANGE
CENTER 14 85N 3W
OFFICE FILE NO.
85314m_020903.jpg



PREVIOUSLY RECORDED IN BOOK NA PAGE NA
MONUMENT DESCRIPTION AND HOW ESTABLISHED
PER BREAKDOWN OF SECTION 14 T85N R3W SET
5/8"X24" REBAR AT CENTER OF SECTION. 4' WEST OF
N-S FENCE & 1.5' SOUTH OF E-W FENCE. TIES AS
INDICATED.

CORNERS TO BE INDEXED

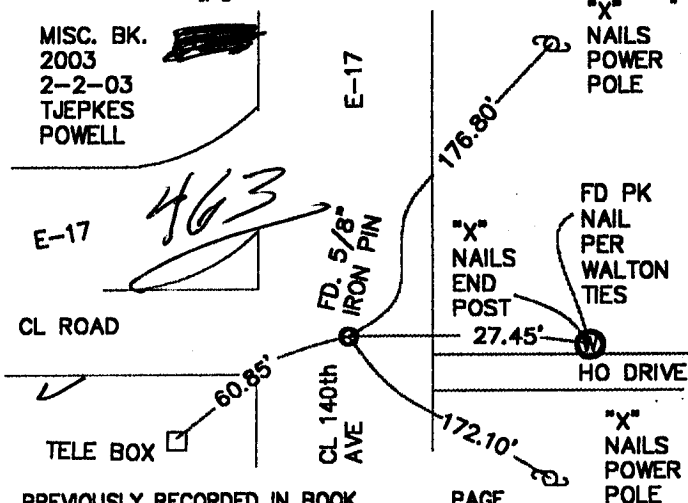
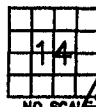
CORNER SECTION TOWNSHIP RANGE
NE 1/4 SE 1/4 SE 1/4 14 85N 3W
OFFICE FILE NO.
85314t_020903.jpg



PREVIOUSLY RECORDED IN BOOK NA PAGE NA
MONUMENT DESCRIPTION AND HOW ESTABLISHED
SET 5/8"X24" REBAR W/CAP #14807 ON SPLIT
BETWEEN E 1/4 COR. & SE COR. SECTION 14 T85N R3W.
TIED AS INDICATED.

CORNERS TO BE INDEXED

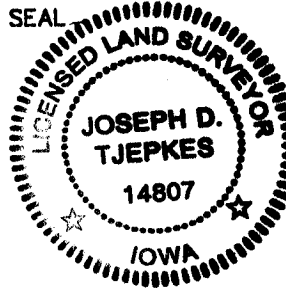
CORNER SECTION TOWNSHIP RANGE
SE 1/4 14 85N 3W
OFFICE FILE NO.
85323e_020903.jpg



PREVIOUSLY RECORDED IN BOOK NA PAGE NA
MONUMENT DESCRIPTION AND HOW ESTABLISHED
FD. 5/8" REBAR PER LS (WALTON) TIE AT INTERSECTION
OF E-17 & 140th AVE. RETIED AS INDICATED SE
CORNER SECTION 14 T85N R3W.

I hereby declare that this plat, survey or report was made by me or under my direct personal supervision and that I am a duly registered Land Surveyor under the laws of the State of Iowa.

Signed:
Joseph D. Tjepkes L.S. Iowa Reg. No. 14807
My Registration Renewal Date is December 31, 2004



J.D. Tjepkes LS 14807
23428 RIDGE ROAD
ANAMOSA, IOWA, 52205
(319-462-6067)

