

UNITED STATES PUBLIC LAND SURVEY CORNER CERTIFICATE

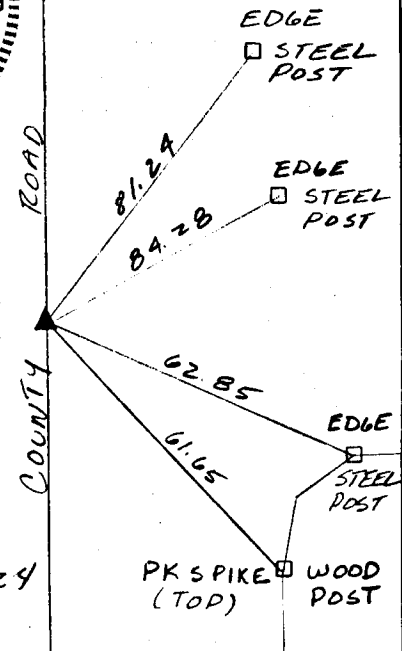
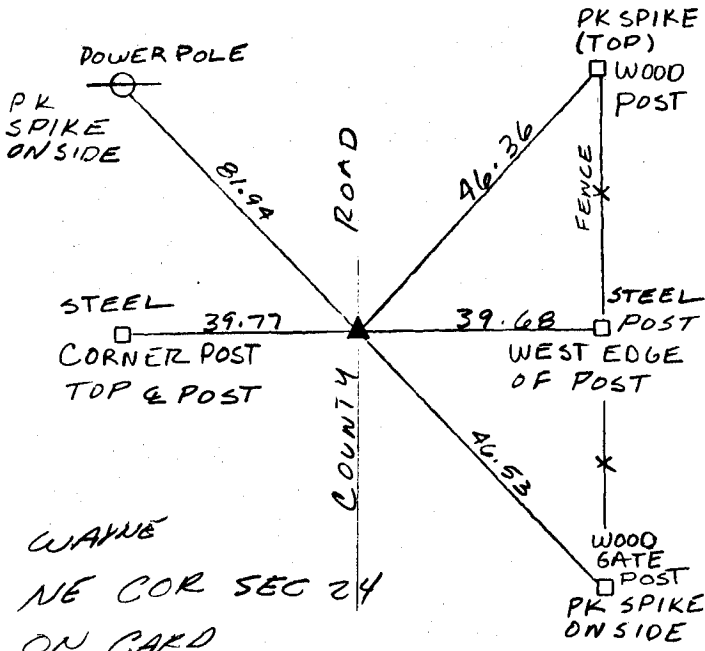
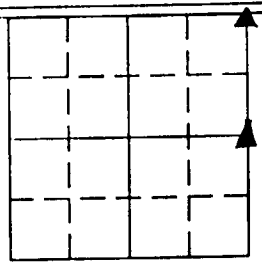
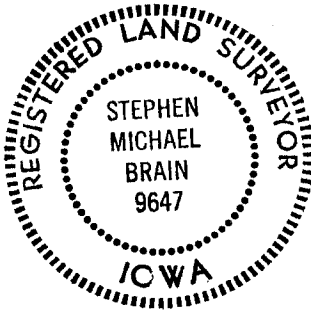
LAND SURVEY MONUMENTS SITUATED IN SECTION 24, TOWNSHIP 85,
RANGE 3W, OF THE 5th. PRINCIPAL MERIDIAN, JONES,
COUNTY, IOWA.

N NO SCALE

RECOVERY TIE DRAWING

NE CORNER

E 1/4 CORNER



WAYNE
NE COR SEC 24
ON CARD
12-21-90
M.S.

WAYNE
E 1/4 COR SEC 24
ON CARD
12-21-90
M.S.

PREVIOUSLY RECORDED IN BOOK _____ PAGE _____

MONUMENT DESCRIPTION AND HOW ESTABLISHED: _____

FOUND 5/8" REROD

PREVIOUSLY RECORDED IN BOOK _____ PAGE _____

MONUMENT DESCRIPTION AND HOW ESTABLISHED: _____

FOUND 5/8" REROD

I HEREBY DECLARE THAT THE SURVEY WORK WAS COMPLETED AND THIS CERTIFICATE WAS PREPARED BY ME OR UNDER MY DIRECT PERSONAL SUPERVISION AND THAT I AM A DULY REGISTERED LAND SURVEYOR UNDER THE LAWS OF THE STATE OF IOWA.

Stephen Michael Brain 12-7-90
STEPHEN MICHAEL BRAIN, P.E. & L.S. 9647

List Corners to be Indexed

Corners	Section	Twp	Range
SE	13	85	3
SW	18	85	2
NW	19	85	2
W1/4	19	85	2

PAMENT ENGINEERING, INC.
HIAWATHA, IOWA

85324e-120790, 853240-120790