

2004 1988

FILED
RECORDERS OFFICE
JONES COUNTY IOWA

04 JUN -4 AM 9:34

MARIE KRUTZFIELD
RECORDER No Fee

G

J.D. TJEPKES, LS. JONES COUNTY ENGINEER'S OFFICE, 19501 HWY. 64, ANAMOSA, IOWA, 52205 (319)462-3785

UNITED STATES PUBLIC LAND SURVEY CORNER CERTIFICATE

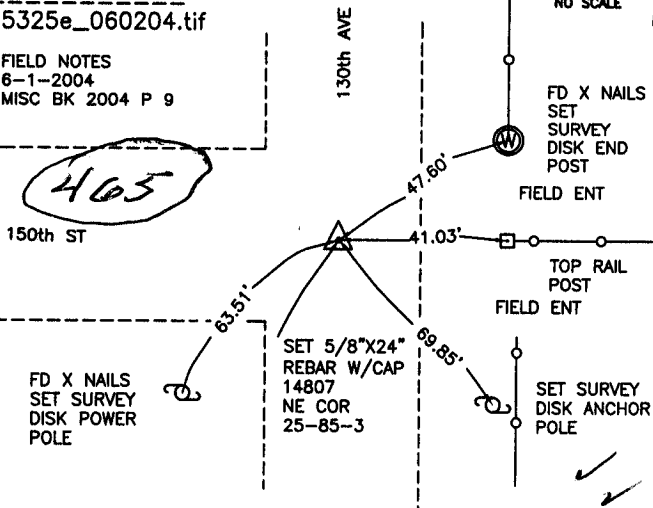
LAND SURVEY MONUMENTS SITUATED IN SECTION 25, TOWNSHIP 85
NORTH, RANGE 3 WEST OF THE 5TH P.M., JONES COUNTY, IOWA

CORNERS TO BE INDEXED

CORNER SECTION TOWNSHIP RANGE
NE COR 25 85N 3W

OFFICE FILE NO.
85325e_060204.tif

FIELD NOTES
6-1-2004
MISC BK 2004 P 9



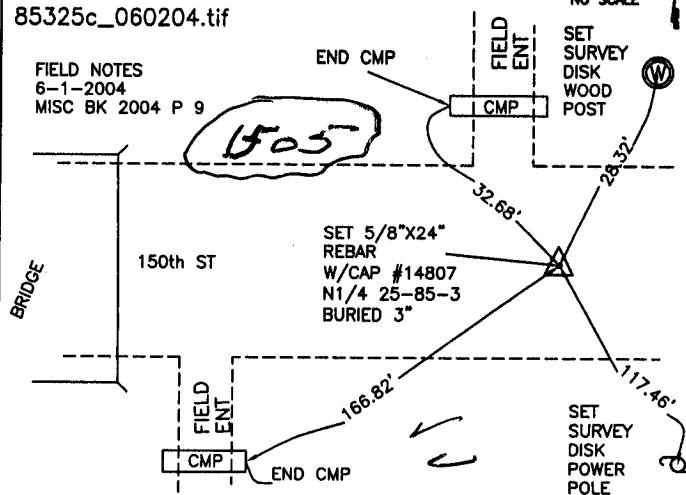
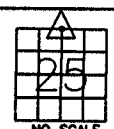
PREVIOUSLY RECORDED IN BOOK 331, PAGE 107
MONUMENT DESCRIPTION AND HOW ESTABLISHED
TIES OF RECORD BK 331 P107 JONES CO RECORDER'S OFFICE
WOULD NOT INTERSECT. RESET 5/8" X 24" REBAR W/CAP #14807
PER RECORDED PLAT OF SURVEY BK K P20, AND PHYSICAL
EVIDENCE. TIES AS INDICATED FOR NE CORNER SECTION 25 T85N
R3W.

CORNERS TO BE INDEXED

CORNER SECTION TOWNSHIP RANGE
N1/4 COR 25 85N 3W

OFFICE FILE NO.
85325c_060204.tif

FIELD NOTES
6-1-2004
MISC BK 2004 P 9

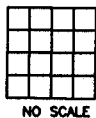


PREVIOUSLY RECORDED IN BOOK NA, PAGE NA
MONUMENT DESCRIPTION AND HOW ESTABLISHED
SET 5/8" X 24" REBAR W/CAP #14807 ON LINE AND
PROPORTIONATE DISTANCE FROM FOUND NW COR SEC 25 &
FOUND NE COR SEC 25. TIES AS INDICATED FOR N1/4 COR.
SECTION 25 T85N R3W.

CORNERS TO BE INDEXED

CORNER SECTION TOWNSHIP RANGE

OFFICE FILE NO.



CORNERS TO BE INDEXED

CORNER SECTION TOWNSHIP RANGE

OFFICE FILE NO.



PREVIOUSLY RECORDED IN BOOK _____, PAGE _____
MONUMENT DESCRIPTION AND HOW ESTABLISHED _____

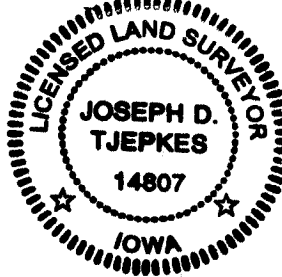
PREVIOUSLY RECORDED IN BOOK _____, PAGE _____
MONUMENT DESCRIPTION AND HOW ESTABLISHED _____

I hereby declare that this plat, survey or report was made by me or under my direct personal supervision and that I am a duly registered Land Surveyor under the laws of the State of Iowa.

Signed: *[Signature]* 6-02-04

Joseph D. Tjepkes L.S. Iowa Reg. No. 14807
My Registration Renewal Date is December 31, 2004

SEAL



J.D. TJEPKES LS 14807
JONES COUNTY
ENGINEER'S OFFICE

19501 HWY. 64,
ANAMOSA, IOWA,
52205 (319)462-3785

UNITED STATES PUBLIC LAND SURVEY CORNER CERTIFICATE

LAND SURVEY MONUMENTS SITUATED IN SECTION 25, TOWNSHIP 85 NORTH
RANGE 3 WEST OF THE 5TH P.M., JONES COUNTY, IOWA.

NO SCALE

NE CORNER

3-2-93 ON CARD M.S.

PREVIOUSLY RECORDED IN BOOK _____ PAGE _____

MONUMENT DESCRIPTION AND HOW ESTABLISHED _____
SET 1/2" REBAR

NO SCALE

W 1/4 CORNER

1760

RECORDERS OFFICE
JONES COUNTY IOWA

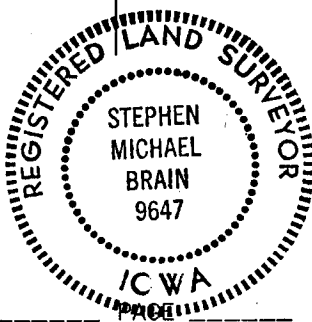
92 DEC 30 AM 11:24

BOOK 331 PAGE 107
DORIS JEANNE HERRIN
RECORDER 500A

3-2-93 ON CARD E 1/4 COR SEC. 26 M.S.

PREVIOUSLY RECORDED IN BOOK _____ PAGE _____

MONUMENT DESCRIPTION AND HOW ESTABLISHED _____
SET 1/2" REBAR SPLIT FENCE AND ROAD



I hereby declare that this plat, survey or report was made by me or under my direct personal supervision and that I am a duly registered Land Surveyor under the laws of the State of Iowa.

Signed Stephen Michael Brain Date 12-22-92
Stephen Michael Brain, P.E. & L.S. Iowa Reg No. 9647

CORNERS TO BE INDEXED			
CORNER	SECTION	TOWNSHIP	RANGE
NE	25	85	3W
W 1/4	25	85	3W

BRAIN ENGINEERING, INC.
3132 NORMAN DRIVE
MARION, IOWA 52302
(319) 385-7811

85325e - 122299, 85326e - 122292