

SECTION CORNER CERTIFICATE

OF
 LAND SURVEY MONUMENTS SITUATED IN SECTION 23, TOWNSHIP 85 NORTH,
 RANGE 3 WEST, OF THE FIFTH PRINCIPAL MERIDIAN, JONES, COUNTY, IOWA.

PREVIOUSLY RECORDED IN BOOK _____ AT PAGE _____

FOR RECORDER'S USE

- REASON FOR PREPARING CERTIFICATE:
- A) THERE IS NO CERTIFICATE FOR THE CORNER ON FILE WITH THE RECORDER OF THE COUNTY IN WHICH THE CORNER IS LOCATED.
 - B) CORNER POSITION DIFFERS FROM THAT SHOWN IN THE PUBLIC RECORDS OF THE COUNTY IN WHICH THE CORNER IS LOCATED.
 - C) THE CORNER MONUMENT HAS BEEN REPLACED OR MODIFIED.
 - D) THE REFERENCE TIES REFERRED TO IN AN EXISTING PUBLIC RECORD ARE INCORRECT.

1999 3182

FILED
 RECORDERS OFFICE
 JONES COUNTY IOWA

99 SEP -8 AM 10:14

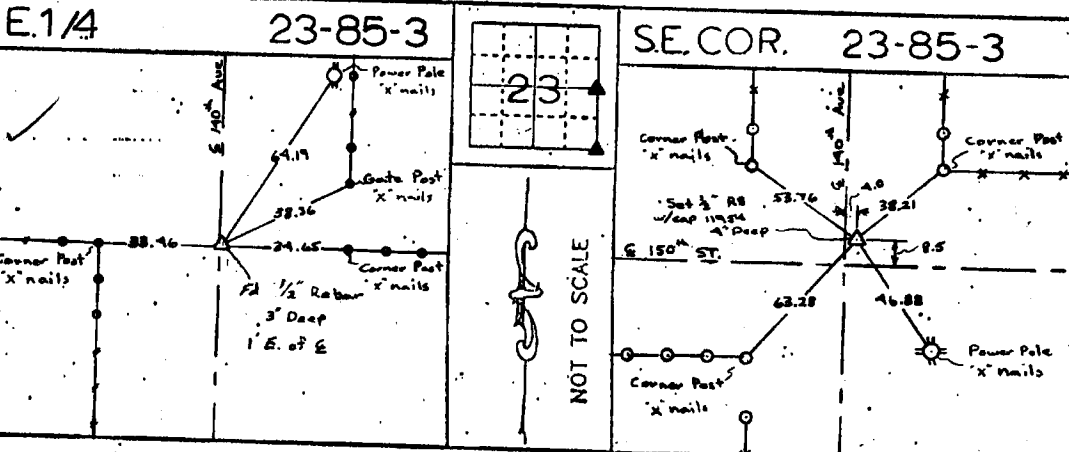
MARIE KRUTZFIELD
 RECORDER *6.00 pd*

MONUMENT DESCRIPTION AND REMARKS :

*East 1/4 Section 23 - Township 85 North - Range 3 West Fourth 1/2" Rebar 3" Deep
 1' East of S. 140th Ave.*

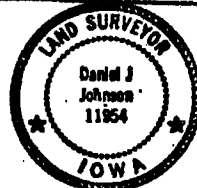
*Southeast Corner Section 23 - Township 85 North - Range 3 West Set 1/2" Rebar w/cap 11954
 3" Deep 1' East of S. 140th Ave. & 8.5' North of E. 150th St.*

RECOVERY TIE DRAWING



DANIEL J. JOHNSON - CERTIFY THAT THE CORNER LOCATION(S) SHOWN ON THIS RECORD WERE DETERMINED BY ME OR UNDER MY DIRECTION AND CONTROL AND THAT THIS U.S. PUBLIC LAND SURVEY MONUMENT RECORD IS CORRECT AND COMPLETE TO THE BEST OF MY KNOWLEDGE AND BELIEF.

Daniel J. Johnson 9-8-99
 DANIEL J. JOHNSON L.S. NO 11954 DATE



GOVERNMENT CORNER PROPERTY CORNER FOUND 1/2" 150' W/ L.S. CAP SET --- EXISTING FENCE LINE --- PROPERTY LINE	SHEET FILE	U.S. PUBLIC LAND SURVEY RECORD		HALL AND HALL ENGINEERS, INC. 209 29TH STREET N.E. CEDAR RAPIDS, IOWA 52402 (319) 362-9548
	PROJECT TITLE	Ruth School		
DRAWN BY	JSR	CHECKED BY	DJJ	DATE
DATE	9/6/99	SCALE	None	P. NO.
SHEET NO.	5390			

853230-090899
 853262-090899