

PREPARED BY HALL & HALL ENGINEERS, INC. 209 29TH STREET N.E. CEDAR RAPIDS, IOWA 52402 (319) 382-9548

SECTION CORNER CERTIFICATE

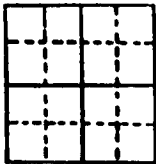
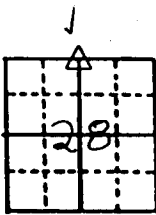
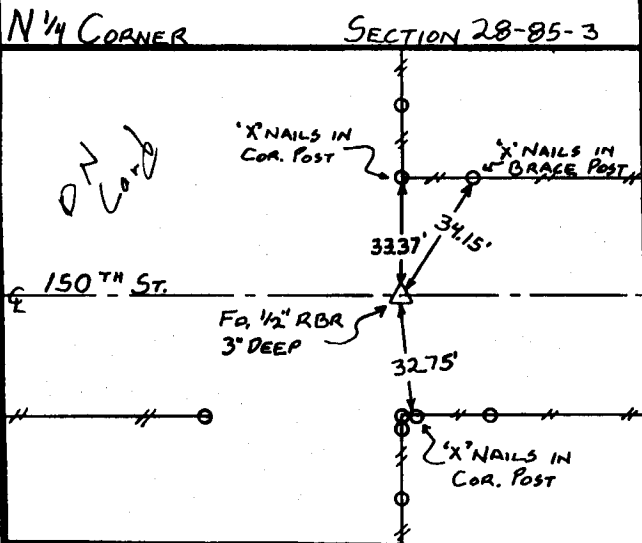
OF
LAND SURVEY MONUMENTS SITUATED IN SECTION 28, TOWNSHIP 85 NORTH,
RANGE 3 WEST, OF THE FIFTH PRINCIPAL MERIDIAN, JONES COUNTY, IOWA.

PREVIOUSLY RECORDED IN BOOK _____ AT PAGE _____

MONUMENT DESCRIPTION AND REMARKS:

N¹/₄ COR. SEC. 28-85-3: FOUND 1/2" REBAR 3" BELOW SURFACE, @ 150TH ST. & IN LINE WITH N-S FENCE LINE

RECOVERY TIE DRAWING



Wayne

85328c-102797



I hereby certify that this land surveying document was prepared and the related survey work was performed by me or under my direct personal supervision and that I am a duly licensed Land Surveyor under the laws of the State of Iowa.

Signed: Daniel J. Johnson Date: 10-27-97

Daniel J. Johnson, L.S. 11954
My license renewal date is December 31, 1998

Pages or sheets covered by this seal:
(Entire submission unless specified here)

REASON FOR PREPARING CERTIFICATE:

- A) THERE IS NO CERTIFICATE FOR THE CORNER ON FILE WITH THE RECORDER OF THE COUNTY IN WHICH THE CORNER IS LOCATED
- B) CORNER POSITION DIFFERS FROM THAT SHOWN IN THE PUBLIC RECORDS OF THE COUNTY IN WHICH THE CORNER IS LOCATED.
- C) THE CORNER MONUMENT HAS BEEN REPLACED OR MODIFIED
- D) THE REFERENCE TIES REFERRED TO IN AN EXISTING PUBLIC RECORD ARE INCORRECT

GOVERNMENT CORNER
 PROPERTY CORNER (OLAND)
 1/2" 150° W/ L.S. CAP SET
 - - - - - EXISTING FENCE LINE
 ———— PROPERTY LINE

SHEET NO. 15 PUBLIC LAND SURVEY RECORD

PROJECT NO. PAUL GLEN - P.O.S.

HALL AND HALL ENGINEERS, INC.
 209 29TH STREET N.E.
 CEDAR RAPIDS, IOWA 52402
 (319) 382-9548

DRAWN BY: JWP
 CHECKED BY: JSR
 DATE: 4/17/94
 SCALE: NONE
 PROJECT NO: 5270