

SECTION CORNER CERTIFICATE

OF
 LAND SURVEY MONUMENTS SITUATED IN SECTION 29, TOWNSHIP 85 NORTH,
 RANGE 3 WEST, OF THE FIFTH PRINCIPAL MERIDIAN, JONES, COUNTY, IOWA.

PREVIOUSLY RECORDED IN BOOK _____ AT PAGE _____ .

FOR RECORDER'S USE

REASON FOR PREPARING CERTIFICATE:

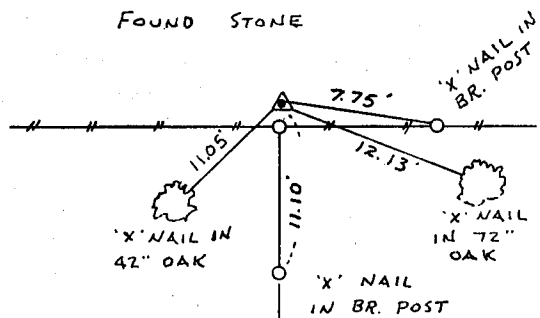
- A) THERE IS NO CERTIFICATE FOR THE CORNER ON FILE WITH THE RECORDER OF THE COUNTY IN WHICH THE CORNER IS LOCATED.
- B) CORNER POSITION DIFFERS FROM THAT SHOWN IN THE PUBLIC RECORDS OF THE COUNTY IN WHICH THE CORNER IS LOCATED.
- C) THE CORNER MONUMENT HAS BEEN REPLACED OR MODIFIED.
- D) THE REFERENCE TIES REFERRED TO IN AN EXISTING PUBLIC RECORD ARE INCORRECT.

MONUMENT DESCRIPTION AND REMARKS :

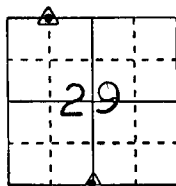
NE COR NW 4 - NW 4 SECTION 29-85-3 FOUND STONE 22" x 16" x 5"
 0.5' NORTH OF FENCE 4" ABOVE GROUND SET 1/2" REBAR
 ALONG SOUTH SIDE OF STONE
 S 1/4 COR. SECTION 29-85-3 FOUND NAIL IN E COUNTY ROAD E-23

RECOVERY TIE DRAWING

NE COR. NW 4 - NW 4 29-85-3

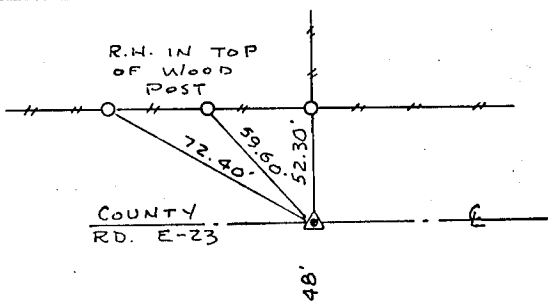


ON CARD 2-6-92 M.S.



NOT TO SCALE

S 1/4 COR. 29-85-3

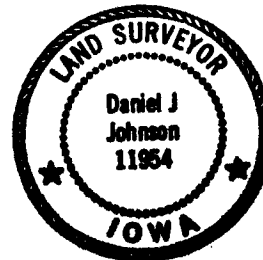


ON CARD NW SEC. 29 2-6-92

I, DANIEL J. JOHNSON CERTIFY THAT THE CORNER LOCATION(S) SHOWN ON THIS RECORD WERE DETERMINED BY ME OR UNDER MY DIRECTION AND CONTROL AND THAT THIS U.S. PUBLIC LAND SURVEY MONUMENT RECORD IS CORRECT AND COMPLETE TO THE BEST OF MY KNOWLEDGE AND BELIEF.

Daniel J. Johnson
 DANIEL JOHNSON L.S. NO 8165

1-22-92
 DATE



- GOVERNMENT CORNER
- 5/8" TIE PIN SET
- CENTERLINE
- EXISTING FENCE LINE
- R.O.W. LINE

SHEET TITLE: U.S. PUBLIC LAND SURVEY RECORD

PROJECT TITLE: JONES COUNTY PROJECT C-749

HALL AND HALL ENGINEERS, INC.
 226 29TH STREET DRIVE S.E.
 CEDAR RAPIDS, IOWA 52403
 319-362-9548

DWN R.W.B.

KHC D.J.J.

APP

DATE 1-2-92

SCALE NONE

FNO OT 23

PNO 4578

953296-012292, 96237, 017297