

COPY

Jones County, Iowa
 Marie Krutzfield, Recorder
 Fee Book 2010 3467

12/13/2010 @1207PM
 ZSC SEC COR CERT
 Book: Page: # Pages: 1
 Total Fees: \$0.00

PREPARED BY
 CLARENCE J. WALTON, JONES COUNTY ENGINEER'S OFFICE, 19501 HWY. 64, ANAMOSA, IOWA, 52205 (319) 462-3785

UNITED STATES PUBLIC LAND SURVEY CORNER CERTIFICATE

**LAND SURVEY MONUMENTS SITUATED IN SECTION 2, TOWNSHIP 85 NORTH,
 RANGE 3 WEST OF THE 5TH PRINCIPAL MERIDIAN, JONES COUNTY, IOWA.**

NOTES:

- 1) THE STATE PLANE COORDINATES AS SHOWN ARE FOR CONVENIENCE ONLY. THE TIES AS SHOWN SHOULD BE USED TO REPLACE THE CORNER, IF DESTROYED.
- 2) COORDINATES AS SHOWN ARE GRID COORDINATES AND BASED ON JONES COUNTY G.P.S. CONTROL NETWORK WHICH IN TURN IS BASED ON NAD 83 IOWA NORTH DATUM.
- 3) BASIS OF BEARINGS ARE BASED ON JONES COUNTY G.P.S. CONTROL NETWORK.
- 4) ALL MEASUREMENTS ARE IN FEET AND DECIMALS THEREOF. LONG DISTANCES SHOWN ARE GRID DISTANCES.

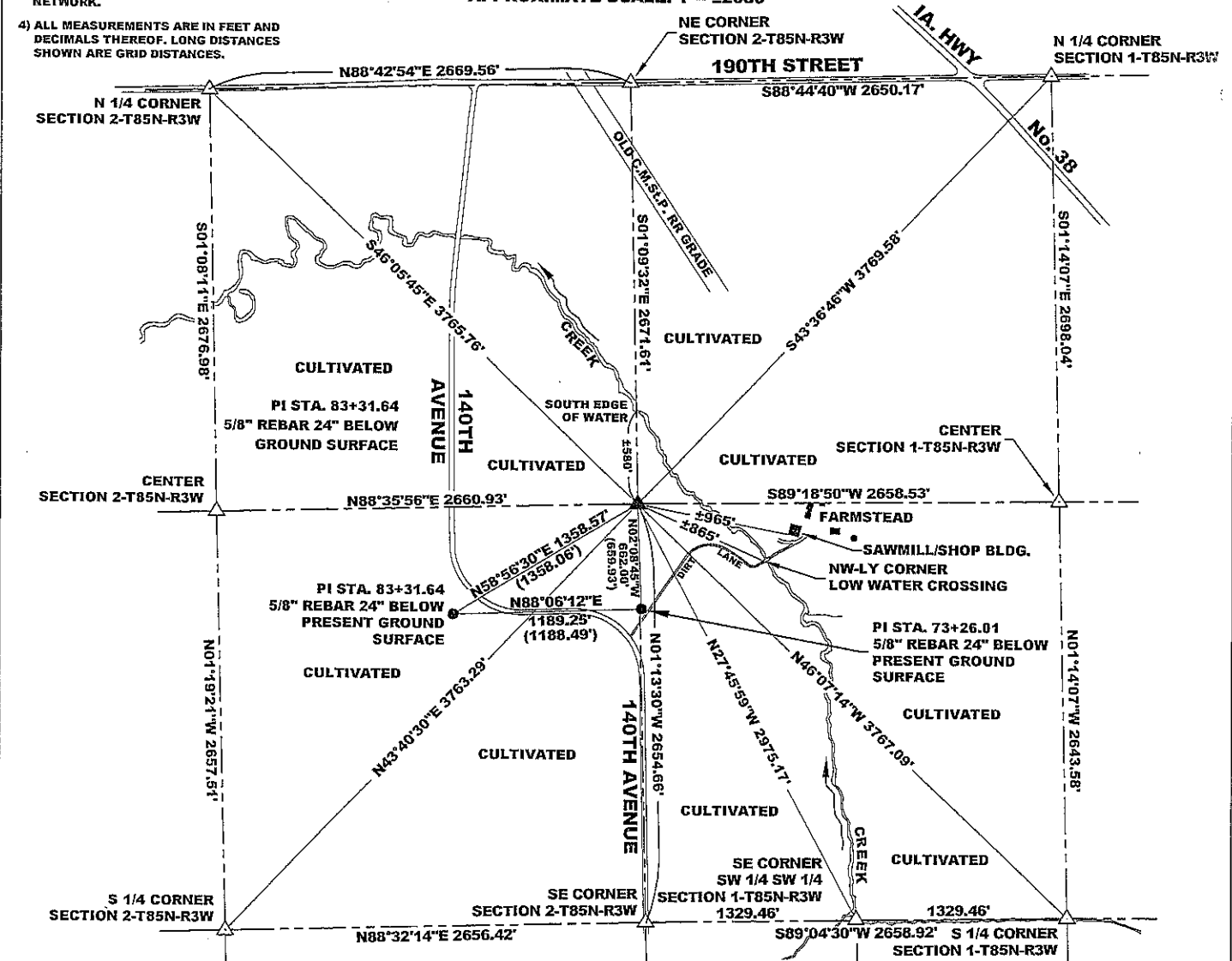
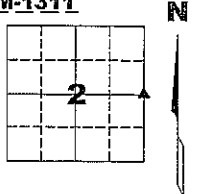
CORNER SECTION TOWNSHIP RANGE
 E 1/4 CORNER 2 T85N R3W

PROJECT: M-1311

STATE PLANE COORDINATE
 NAD 83 IOWA NORTH
 N 3545266.29
 E 5557814.44

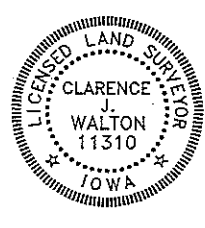
0' ±520' ±1040' ±2080'

APPROXIMATE SCALE: 1" = ±2080'



PREVIOUSLY RECORDED IN BOOK 295, PAGE 254
 MONUMENT DESCRIPTION AND HOW ESTABLISHED FOUND 5/8" X 24" REBAR 18" BELOW EXISTING GROUND. MAGNETIZED REBAR AND LOWERED IT TO KEEP IT OUT OF HARMS WAY FROM SUBSOIL TILLAGE PRACTICES. NO DEFINABLE FEATURES WITHIN SHORTER DISTANCE.

NO NOTES. DATE OF SURVEY: 10/12/10



I hereby certify that this land surveying document and the related survey work was performed by me or under my direct personal supervision and that I am a duly registered Land Surveyor under the laws of the State of Iowa.

Signed: *Clarence J. Walton* 12/10/10
 Clarence J. Walton, L.S.
 My Registration Renewal Date is December 31, 2011
 Iowa License Number 11310
 Pages or sheets covered by this seal: 1 of 1.

- A. THERE IS NO CERTIFICATE FOR THE CORNER ON FILE WITH THE RECORDER OF THE COUNTY IN WHICH THE CORNER IS LOCATED.
- B. THE CORNER MONUMENT HAS BEEN REPLACED OR MODIFIED.
- C. THE SURVEYOR IN RESPONSIBLE CHARGE OF THE LAND SURVEYING ACCEPTS A CORNER POSITION THAT DIFFERS FROM THAT SHOWN IN THE PUBLIC RECORDS OF THE COUNTY IN WHICH THE CORNER IS LOCATED.
- D. THE REFERENCE TIES REFERRED TO IN AN EXISTING PUBLIC RECORD NO LONGER EXIST.
- PROVIDED STATE PLANE COORDINATES AND TIED IN WITH OTHER SECTION CORNERS AND PHYSICAL FEATURES.

CORNERS TO BE INDEXED

| CORNER | SECTION | TOWNSHIP | RANGE |
|--------------|---------|----------|-------|
| E 1/4 CORNER | 2 | 85N | 3W |
| W 1/4 CORNER | 1 | 85N | 3W |

JONES COUNTY ENGINEER'S OFFICE



19501 HWY. 64, ANAMOSA, IOWA 52205
 (319) 462-3785

SECTION CORNER CERTIFICATE

OF
 LAND SURVEY MONUMENTS SITUATED IN SECTION 2, TOWNSHIP 85 NORTH,
 RANGE 3 WEST, OF THE FIFTH PRINCIPAL MERIDIAN, Jones, COUNTY, IOWA.

PREVIOUSLY RECORDED IN BOOK _____ AT PAGE _____

FOR RECORDER'S USE

REASON FOR PREPARING CERTIFICATE:

- A) THERE IS NO CERTIFICATE FOR THE CORNER ON FILE WITH THE RECORDER OF THE COUNTY IN WHICH THE CORNER IS LOCATED.
- B) CORNER POSITION DIFFERS FROM THAT SHOWN IN THE PUBLIC RECORDS OF THE COUNTY IN WHICH THE CORNER IS LOCATED.
- C) THE CORNER MONUMENT HAS BEEN REPLACED OR MODIFIED.
- D) THE REFERENCE TIES REFERRED TO IN AN EXISTING PUBLIC RECORD ARE INCORRECT.

1262 FILED
 RECORDERS OFFICE
 JONES COUNTY IOWA

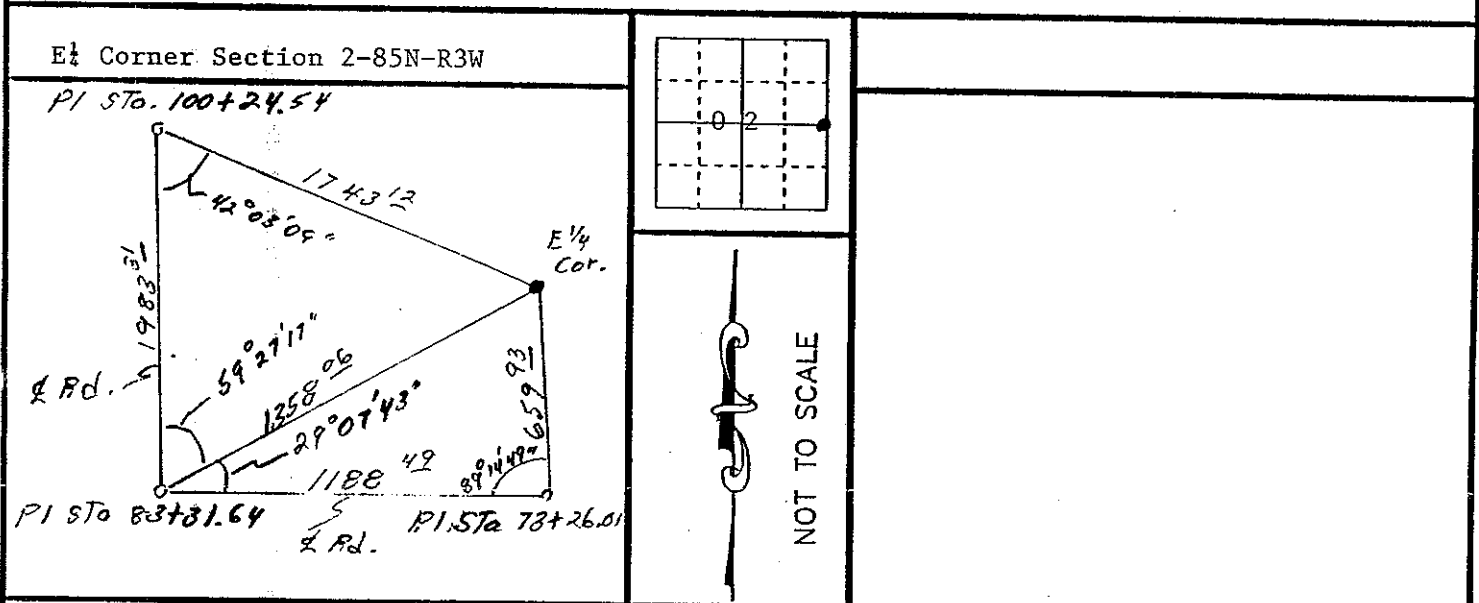
90 NOV 28 PM 3:38

BOOK 295 PAGE 254
 DORIS JEANNE HERRER
 RECORDER 500

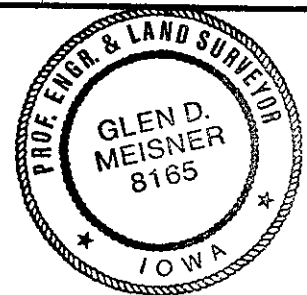
MONUMENT DESCRIPTION AND REMARKS:

Dug pit 3'x4'x2' @ intersection of fold over distance from NE Cor. and West fence extension 0.24 ft. apart and fold over distance from W 1/4 Cor. Sec. 2 and E 1/4 Cor. Sec. 1 distance overlap by 2.58 ft.. Found nothing. Set 5/8"x24" Iron Pin half way between 2' below surface.

RECOVERY TIE DRAWING



I, GLEN D. MEISNER, CERTIFY THAT THE CORNER LOCATION(S) SHOWN ON THIS RECORD WERE DETERMINED BY ME OR UNDER MY DIRECTION AND CONTROL AND THAT THIS U.S. PUBLIC LAND SURVEY MONUMENT RECORD IS CORRECT AND COMPLETE TO THE BEST OF MY KNOWLEDGE AND BELIEF.



Glen D. Meisner 11-12-90
 GLEN D. MEISNER L.S. NO 8165 DATE

| | | | | |
|-------------------------------------------------------------------------------------------------------------------------|----------------------------------------------------|------|----------------------------------------------------------------------------------------------------------------|--------|
| DWM:ML △ GOVERNMENT CORNER ○ 5/8" TIE PIN SET --- CENTERLINE -x-x- EXISTING FENCE LINE - - - R.O.W. LINE | SHEET TITLE: U.S. PUBLIC LAND SURVEY RECORD | | HALL AND HALL ENGINEERS, INC. 226 29TH STREET DRIVE S.E. CEDAR RAPIDS, IOWA 52403 319-362-9548 | |
| | PROJECT TITLE: | | SCALE: | F NO: |
| DWN: | CHK: | APP: | DATE: | SCALE: |