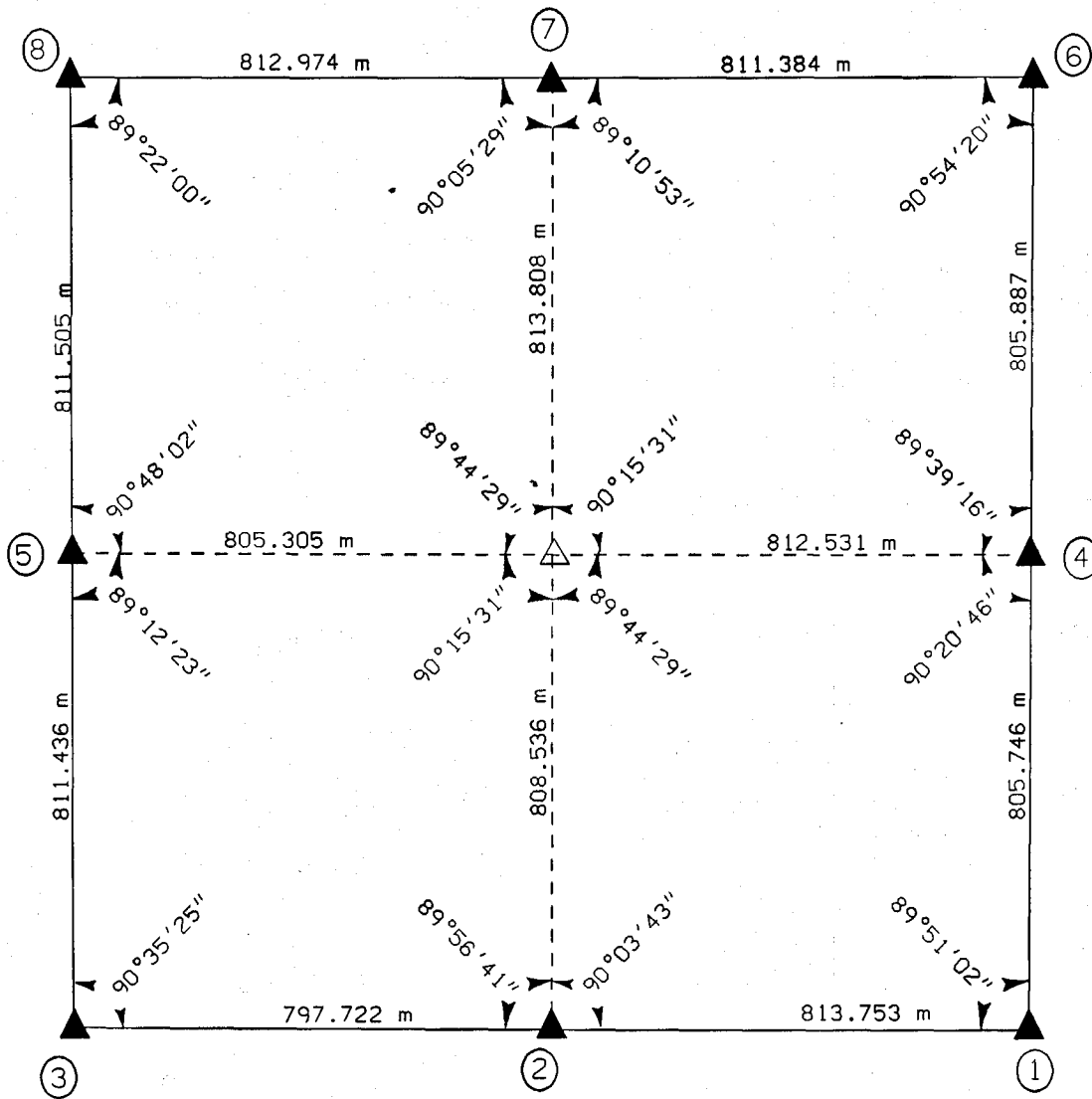


UNITED STATES PUBLIC SECTION CORNER CERTIFICATION
AND LAND CORNER SURVEY
SECTION 35 T-86N R-3W

MADE FOR
IOWA DEPARTMENT OF TRANSPORTATION FOR THE PURPOSE OF
RIGHT OF WAY DESCRIPTIONS ON PRIMARY ROAD No. U.S. 151

MADE BY
MICHAEL R. FAGLE R.L.S. No. 8505
JONES COUNTY, IOWA NHS-151-3(84)--19-57
APRIL 1998 THRU OCTOBER 1998

ALL DISTANCES WERE CAREFULLY MEASURED AND MAY NOT AGREE WITH ROAD SURVEY STATIONING



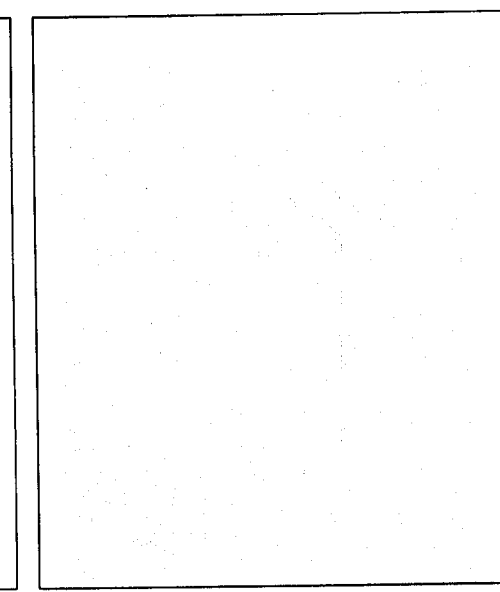
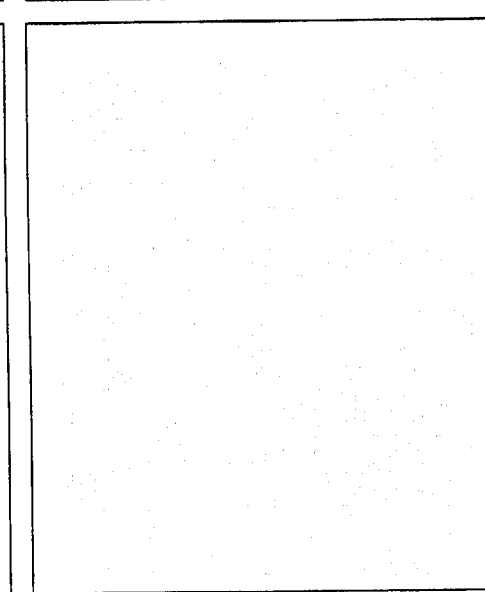
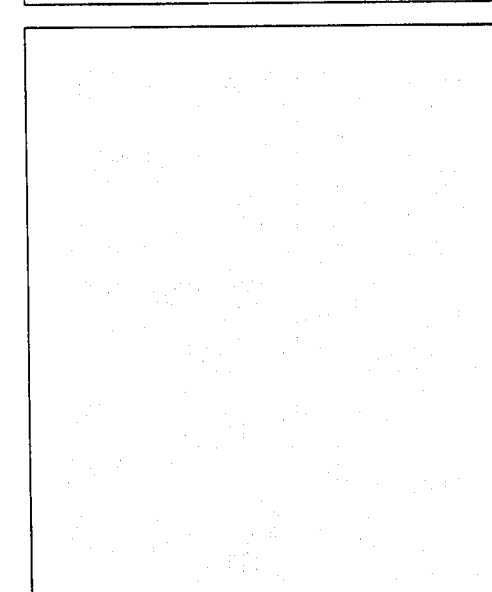
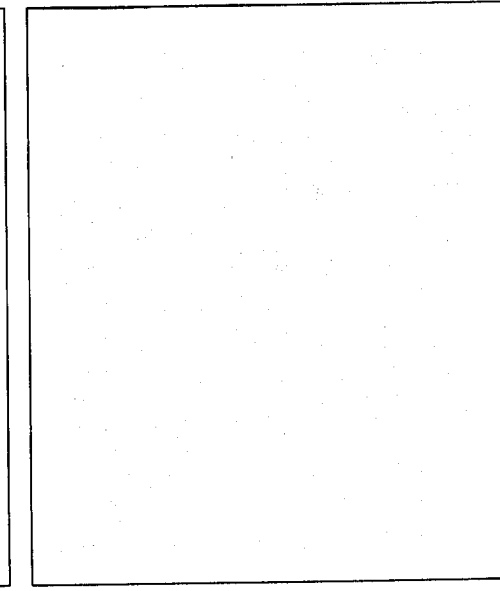
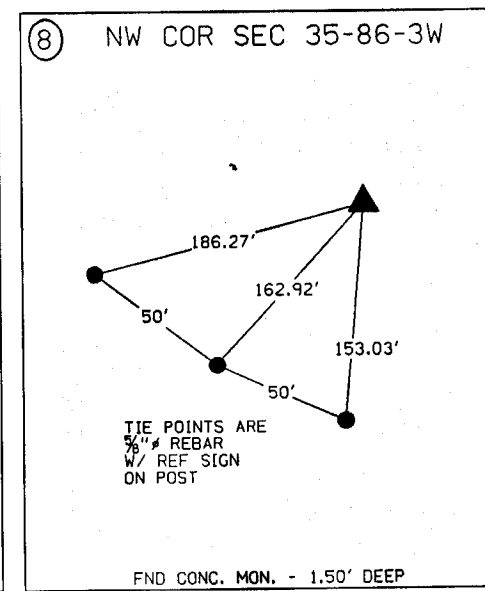
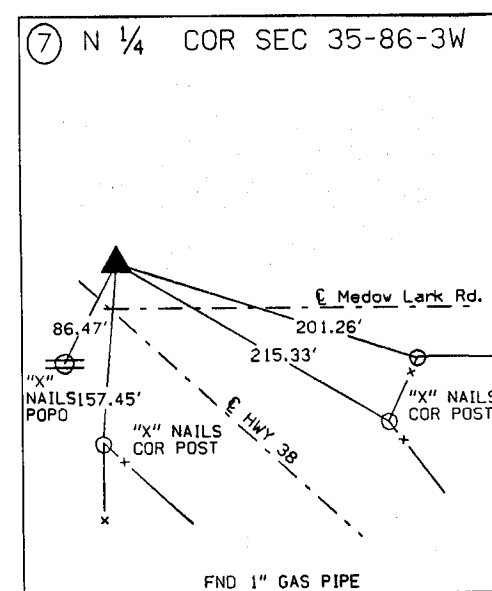
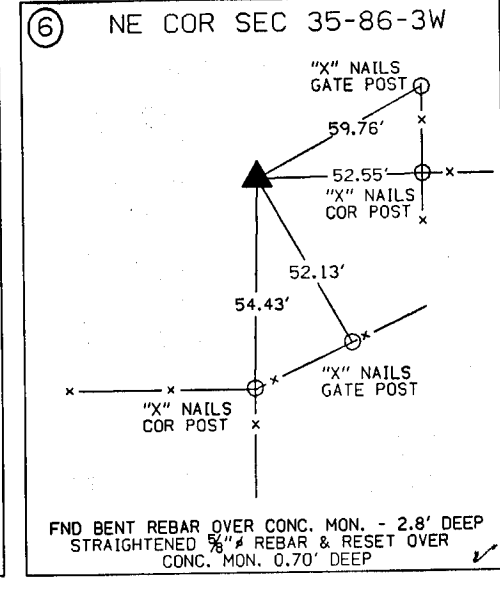
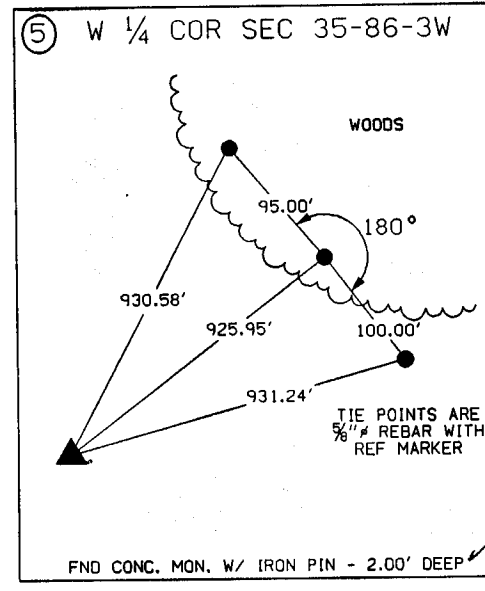
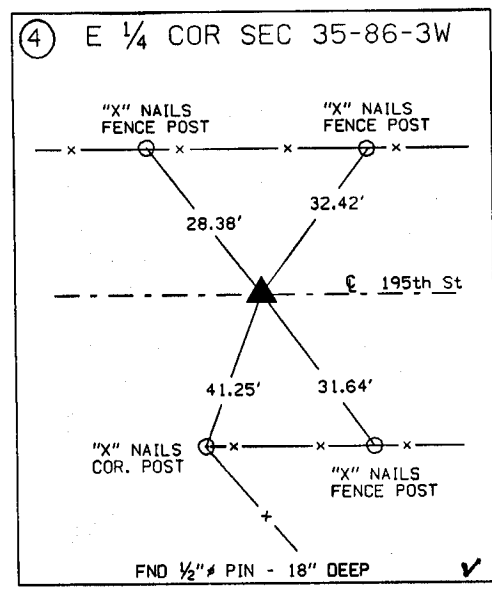
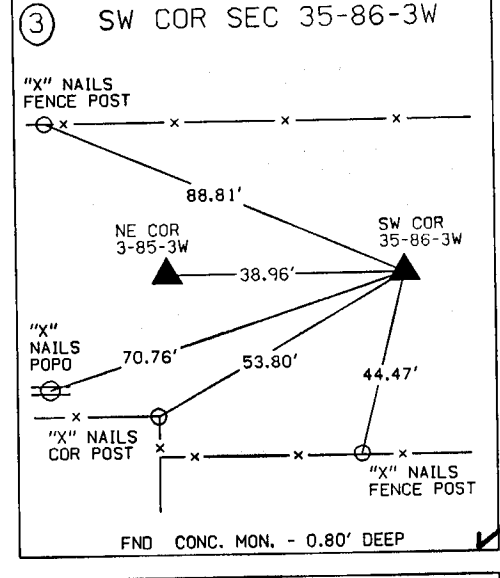
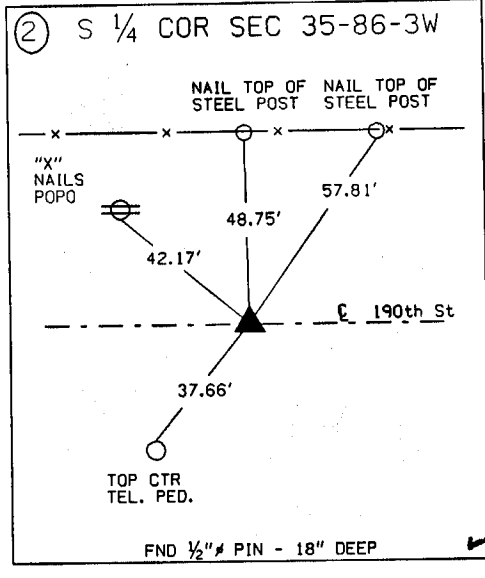
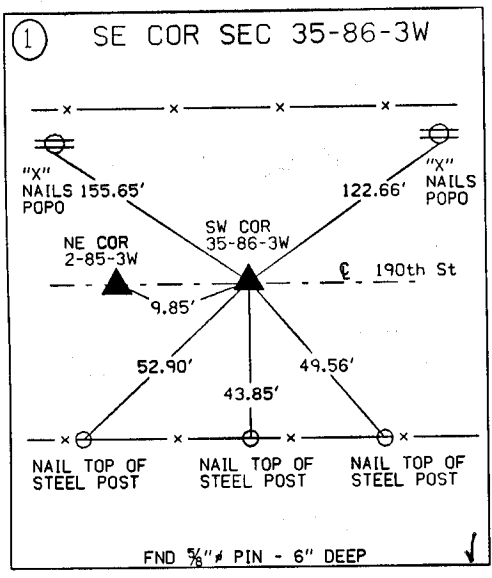
EARTH TECH

863 35c-033199
863 35e-033199
863 35o-033199
863 35w-033199
863 354-033199

METRIC

	I hereby certify that this Land Surveying document was prepared by me or under my direct personal supervision and that I am a duly Licensed Land Surveyor under the laws of the State of Iowa.
	Michael R. Fagle 3-31-99 MICHAEL R. FAGLE Date License number 8505 My license renewal date is December 31, 2000 Pages or sheets covered by this seal: ONE

**UNITED STATES PUBLIC SECTION CORNER CERTIFICATION
AND LAND CORNER SURVEY
SECTION 35 T-86N R-3W**



ALL TIES ARE ENGLISH UNLESS OTHERWISE NOTED

SECTION CORNER CERTIFICATE

OF
 LAND SURVEY MONUMENTS SITUATED IN SECTION 2, TOWNSHIP 85 NORTH,
 RANGE 3 WEST, OF THE FIFTH PRINCIPAL MERIDIAN, Jones, COUNTY, IOWA.

PREVIOUSLY RECORDED IN BOOK _____ AT PAGE _____

FOR RECORDER'S USE

REASON FOR PREPARING CERTIFICATE:

- A) THERE IS NO CERTIFICATE FOR THE CORNER ON FILE WITH THE RECORDER OF THE COUNTY IN WHICH THE CORNER IS LOCATED.
- B) CORNER POSITION DIFFERS FROM THAT SHOWN IN THE PUBLIC RECORDS OF THE COUNTY IN WHICH THE CORNER IS LOCATED.
- C) THE CORNER MONUMENT HAS BEEN REPLACED OR MODIFIED.
- D) THE REFERENCE TIES REFERRED TO IN AN EXISTING PUBLIC RECORD ARE INCORRECT.

1263
 FILED
 RECORDERS OFFICE
 JONES COUNTY IOWA

90 NOV 28 PM 3:38

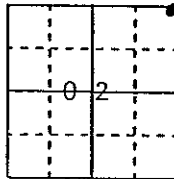
BOOK 295 PAGE 255
 DORIS JEANNE HERREN
 RECORDER 500

MONUMENT DESCRIPTION AND REMARKS:

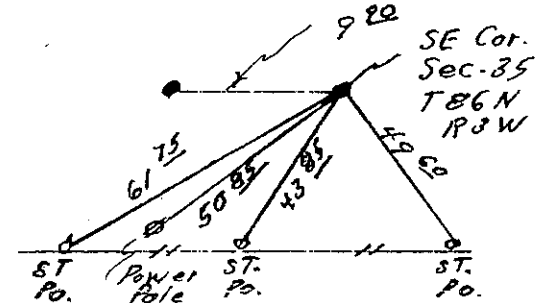
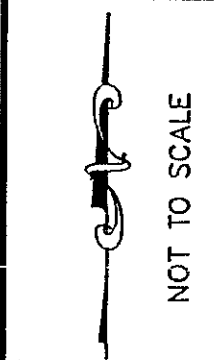
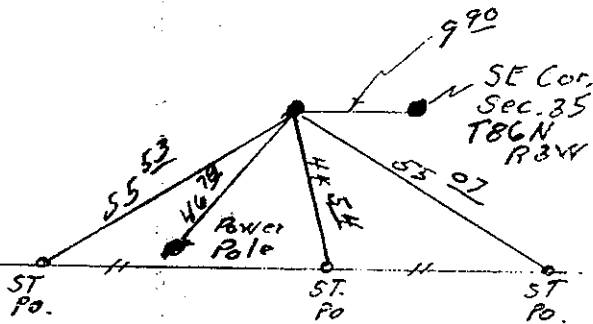
Dug and found concrete monument with Iron Pin with 20" Iron Pin over monument.

RECOVERY TIE DRAWING

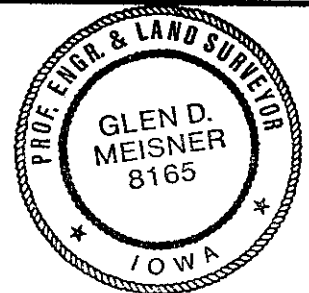
NE Corner Section 2-85N-3W



SE Corner Section 35-86N-3W



I, GLEN D. MEISNER, CERTIFY THAT THE CORNER LOCATION(S) SHOWN ON THIS RECORD WERE DETERMINED BY ME OR UNDER MY DIRECTION AND CONTROL AND THAT THIS U.S. PUBLIC LAND SURVEY MONUMENT RECORD IS CORRECT AND COMPLETE TO THE BEST OF MY KNOWLEDGE AND BELIEF.



Glen D. Meisner 11-12-90
 GLEN D. MEISNER L.S. NO 8165 DATE

GOVERNMENT CORNER
 5/8" TIE PIN SET
 CENTERLINE
 EXISTING FENCE LINE
 R.O.W. LINE

SHEET TITLE: U.S. PUBLIC LAND SURVEY RECORD

HALL AND HALL ENGINEERS, INC.
 226 29TH STREET DRIVE S.E.
 CEDAR RAPIDS, IOWA 52403
 319-362-9548

ZED XIC APP DATE SCALE F NO P NO