

2005 1441

FILED  
RECORDERS OFFICE  
JONES COUNTY IOWA

05 APR 26 AM 11:51

MARIE KRUTZFIELD  
RECORDER 7.00 Pd

PREPARED BY BY DANIEL J. JOHNSON P.L.S., HALL AND HALL ENGINEERS, INC., 1860 BOYSON ROAD, HIAWATHA, IOWA 52233 (319) 362-9548

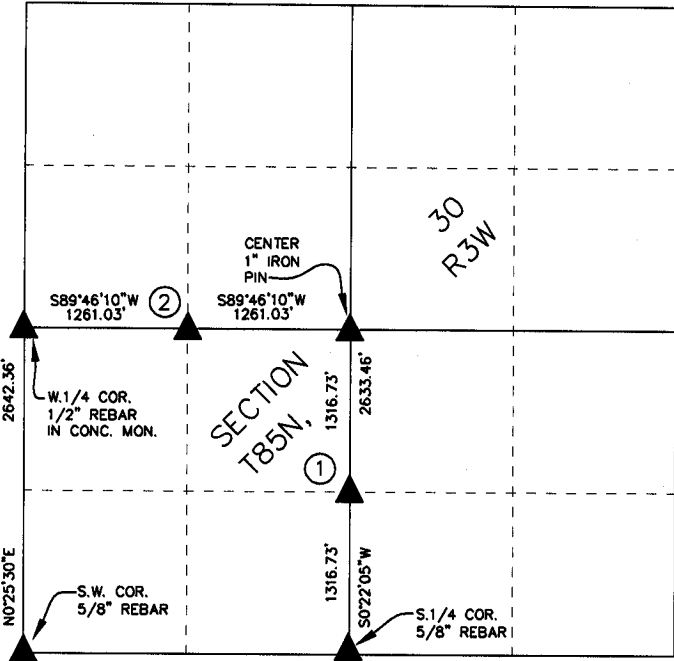
SECTION CORNER INDEX

U.S. PUBLIC LAND SURVEY CORNER CERTIFICATE

LAND SURVEY MONUMENTS SITUATED IN SECTION 30,  
TOWNSHIP 85 NORTH, RANGE 3 WEST, OF THE FIFTH  
PRINCIPAL MERIDIAN, JONES COUNTY IOWA.

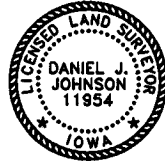
REASON FOR PREPARING CERTIFICATE:

- A) THERE IS NO CERTIFICATE FOR THE CORNER ON FILE WITH THE RECORDER OF THE COUNTY IN WHICH THE CORNER IS LOCATED.
- B) CORNER POSITION DIFFERS FROM THAT SHOWN IN THE PUBLIC RECORDS OF THE COUNTY IN WHICH THE CORNER IS LOCATED.
- C) THE CORNER MONUMENT HAS BEEN REPLACED OR MODIFIED.
- D) THE REFERENCE TIES REFERRED TO IN AN EXISTING PUBLIC RECORD ARE INCORRECT OR MISSING.



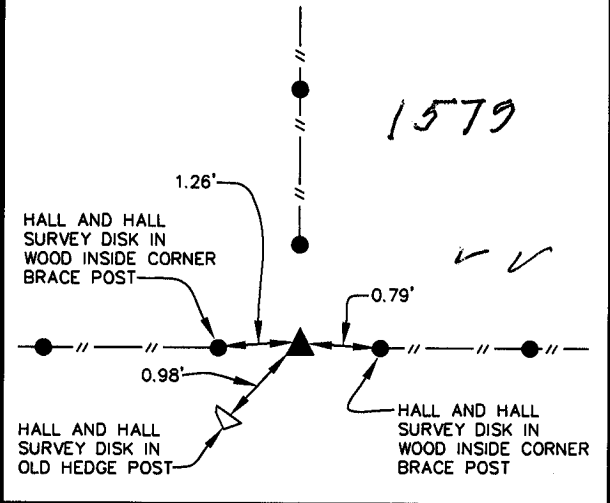
I hereby certify that this land surveying document was prepared and the related survey work was performed by me or under my direct personal supervision and that I am a duly licensed Land Surveyor under the laws of the State of Iowa.

Signed: *Daniel J. Johnson* Date: 4-26-05  
 Daniel J. Johnson, L.S. 11954  
 My license renewal date is December 31, 2006  
 Pages or sheets covered by this seal: 1



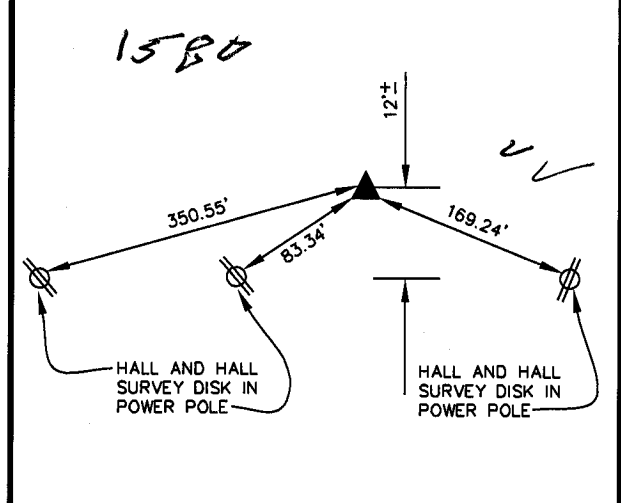
① 853301-042605.716

S.E. CORNER, N.E.1/4-S.W.1/4, SECTION 30, T85N, R3W, SET 1/2" REBAR W/ RED L.S. CAP NO. 11954, FLUSH W/ GROUND AT INTERSECTION OF EAST-WEST FENCE AND FENCE NORTH.



② 853301-042605.716

N.W. CORNER, N.E.1/4-S.W.1/4, SECTION 30, T85N, R3W, SET 1/2" REBAR W/ RED L.S. CAP NO. 11954, FLUSH W/ GROUND. 12'+- NORTH OF POWER POLE LINE.



CAD File: I:\Projects\8200\8277\dwg\8277CERT.dwg Date Plotted : Apr 26, 2005 - 10:04am Plotted By : DLK