

Instrument #: 2015-2382
 08/18/2015 01:19:51 PM Total Pages: 1
 ZSC SECTION CORNER CERTIFICATE
 Recording Fee: \$7.00 Transfer Tax: \$0
 Marie Krutzfield, Recorder, Jones County Iowa



—PREPARED BY AND RETURN TO: MMS CONSULTANTS, INC. 1917 S. GILBERT ST. IOWA CITY, IOWA 52240 (319)351-8282—

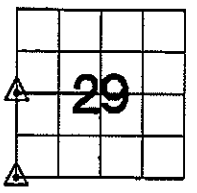
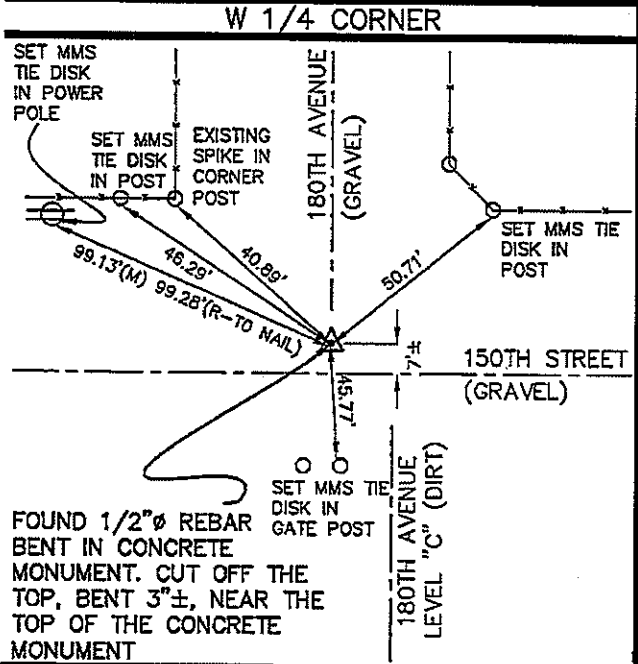
U.S. PUBLIC LAND SURVEY CORNER CERTIFICATE

FOR LAND SURVEY MONUMENTS SITUATED IN SECTION 29, TOWNSHIP 85 NORTH, RANGE 3 WEST, OF THE FIFTH PRINCIPAL MERIDIAN, JONES COUNTY, IOWA

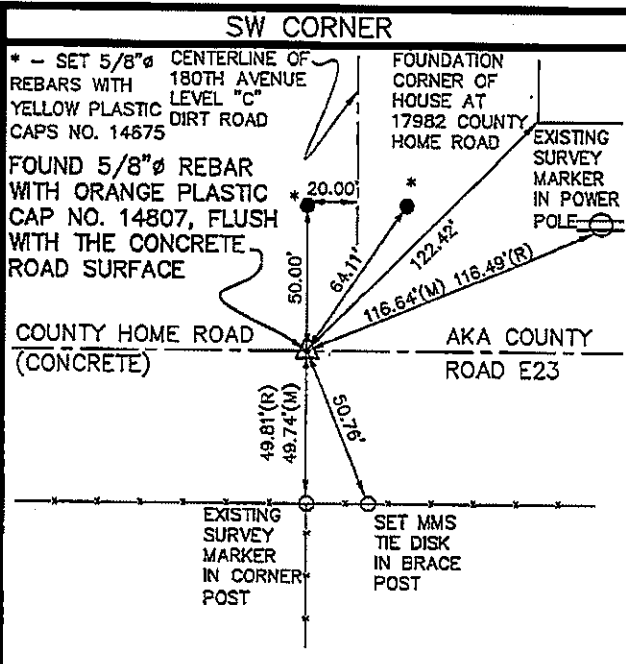
REASON FOR PREPARING CERTIFICATE:

- A) THERE IS NO CERTIFICATE FOR THE CORNER ON FILE WITH THE RECORDER OF THE COUNTY IN WHICH THE CORNER IS LOCATED.
- B) CORNER FOUND, ITS POSITION OR TIES DIFFERS FROM PREVIOUSLY RECORDED CERTIFICATE AS NOTED IN THE NARRATIVE.
- C) THE CORNER MONUMENT WAS REPLACED OR MODIFIED.
- D) THE REFERENCE TIES REFERRED TO IN AN EXISTING PUBLIC RECORD ARE NOT CORRECT.

RECOVERY TIE DRAWING



NOT TO SCALE

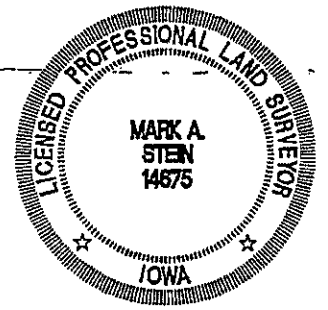


MONUMENT DESCRIPTION AND REMARKS :
FOUND 1/2" Ø REBAR BENT IN CONCRETE MONUMENT. CUT OFF TOP BENT 3" NEAR THE TOP OF THE CONCRETE MONUMENT. THE CONCRETE MONUMENT IS 1" ± DEEP. A UNITED STATES PUBLIC SECTION CORNER CERTIFICATION AND LAND CORNER SURVEY RECORDED AS DOCUMENT NO. 1999 0334 IS RECORDED IN THE RECORDS OF THE JONES COUNTY RECORDER'S OFFICE.

MONUMENT DESCRIPTION AND REMARKS :
FOUND A 5/8" Ø REBAR WITH AN ORANGE PLASTIC CAP NO. 14807, FLUSH WITH THE CONCRETE AS SHOWN ON A UNITED STATES PUBLIC LAND SURVEY CORNER CERTIFICATE RECORDED AS DOCUMENT NO. 2001 1688 IN THE RECORDS OF THE JONES COUNTY RECORDER'S OFFICE. THIS CORNER CERTIFICATE SHOWS NO DISTANCES TO THE TIES. AN EARLIER UNITED STATES SECTION CORNER CERTIFICATION AND LAND CORNER SURVEY IS RECORDED AS DOCUMENT NO. 1999 0334 IN SAID RECORDER'S RECORDS. A COUPLE OF THE SAME TIES WERE USED AGAIN NOW AND MATCH WITHIN REASON AS SHOWN ABOVE.

I hereby certify that this land surveying document was prepared and the related survey work was performed by me or under my direct personal supervision and that I am a duly licensed Professional Land Surveyor under the laws of the State of Iowa.

Mark A. Stein 8/17 2015
 MARK A. STEIN, L.S.
 Iowa Lic. No. 14675
 My license renewal date is December 31, 20 16.



Drawn by: MAS	Scale: NOT TO SCALE
Checked by: GDM	Date: 8/14/2015
Field Book: 1114	Project No: IC 9800-001

U.S. PUBLIC LAND SURVEY CORNER CERTIFICATE

SEC. 29-T85N-R3W OF THE 5TH P.M.
 JONES COUNTY, IOWA
 (EDWARD ALLAIRE PROJECT)

MMS CONSULTANTS, INC.
 IOWA CITY, IOWA 52240
 (319) 351-8282
 www.mmsconsultants.net



Date	Revision
------	----------

2001 1688

FILED
RECORDERS OFFICE
JONES COUNTY IOWA

01 MAY 21 AM 10:06

MARIE KRUTZFIELD
RECORDER No Fee

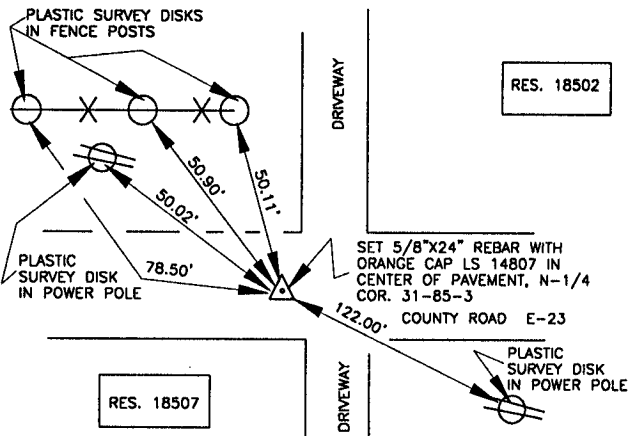
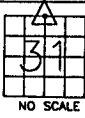
J.D. TJEPKES, LS. JONES COUNTY ENGINEER'S OFFICE, 19501 HWY. 64, ANAMOSA, IOWA, 52205 (319)462-3785

UNITED STATES PUBLIC LAND SURVEY CORNER CERTIFICATE

LAND SURVEY MONUMENTS SITUATED IN SECTION 31, TOWNSHIP 85
NORTH, RANGE 3 WEST OF THE 5TH P.M., JONES COUNTY, IOWA

483 CORNERS TO BE INDEXED

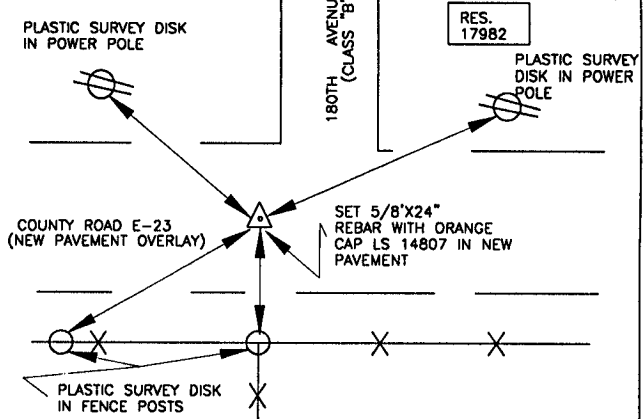
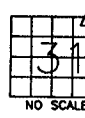
CORNER SECTION TOWNSHIP RANGE
N-QUARTER 31 85N 3W
OFFICE FILE NO.
85331c_051501



PREVIOUSLY RECORDED IN BOOK N/A, PAGE N/A.
MONUMENT DESCRIPTION AND HOW ESTABLISHED FOUND CUT GROSS
IN PAVEMENT PER ENGINEER'S RECORD. DRILLED HOLE AND SET 5/8"x24" REBAR
WITH ORANGE CAP LS 14807 AFTER NEW CONCRETE OVERLAY. SET REFERENCE
POINTS AND TIED OUT AS INDICATED. NORTH 1/4 COR. SECTION 31-85-3.
JONES COUNTY, IOWA

484 CORNERS TO BE INDEXED

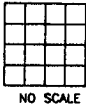
CORNER SECTION TOWNSHIP RANGE
NORTHEAST 31 85N 3W
OFFICE FILE NO.
85331e_051501



PREVIOUSLY RECORDED IN BOOK N/A, PAGE N/A.
MONUMENT DESCRIPTION AND HOW ESTABLISHED FOUND #4 REBAR
IN OLD PAVEMENT PER ENGINEER'S TIES. DRILLED HOLE IN NEW PAVEMENT
OVERLAY, SET 5/8"x24" REBAR WITH ORANGE CAP LS 14807. SET REFERENCE
POINTS AND TIED OUT AS INDICATED. NORTHEAST CORNER SECTION 31
TOWNSHIP 85 NORTH, RANGE 3 WEST, 5TH PRINCIPAL MERIDIAN.
JONES COUNTY, IOWA.

CORNERS TO BE INDEXED

CORNER SECTION TOWNSHIP RANGE
OFFICE FILE NO.



PREVIOUSLY RECORDED IN BOOK _____, PAGE _____
MONUMENT DESCRIPTION AND HOW ESTABLISHED _____

CORNERS TO BE INDEXED

CORNER SECTION TOWNSHIP RANGE
OFFICE FILE NO.



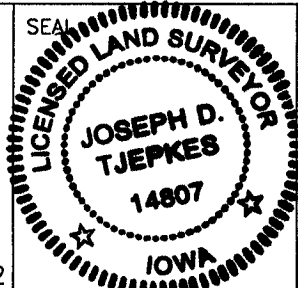
PREVIOUSLY RECORDED IN BOOK _____, PAGE _____
MONUMENT DESCRIPTION AND HOW ESTABLISHED _____

I hereby declare that this plat, survey or report was made by me or under my direct personal supervision and that I am a duly registered Land Surveyor under the laws of the State of Iowa.

Signed:

Joseph D. Tjepkes 5-15-01

Joseph D. Tjepkes L.S. Iowa Reg. No. 14807
My Registration Renewal Date is December 31, 2002



J.D. TJEPKES LS 14807
JONES COUNTY
ENGINEER'S OFFICE

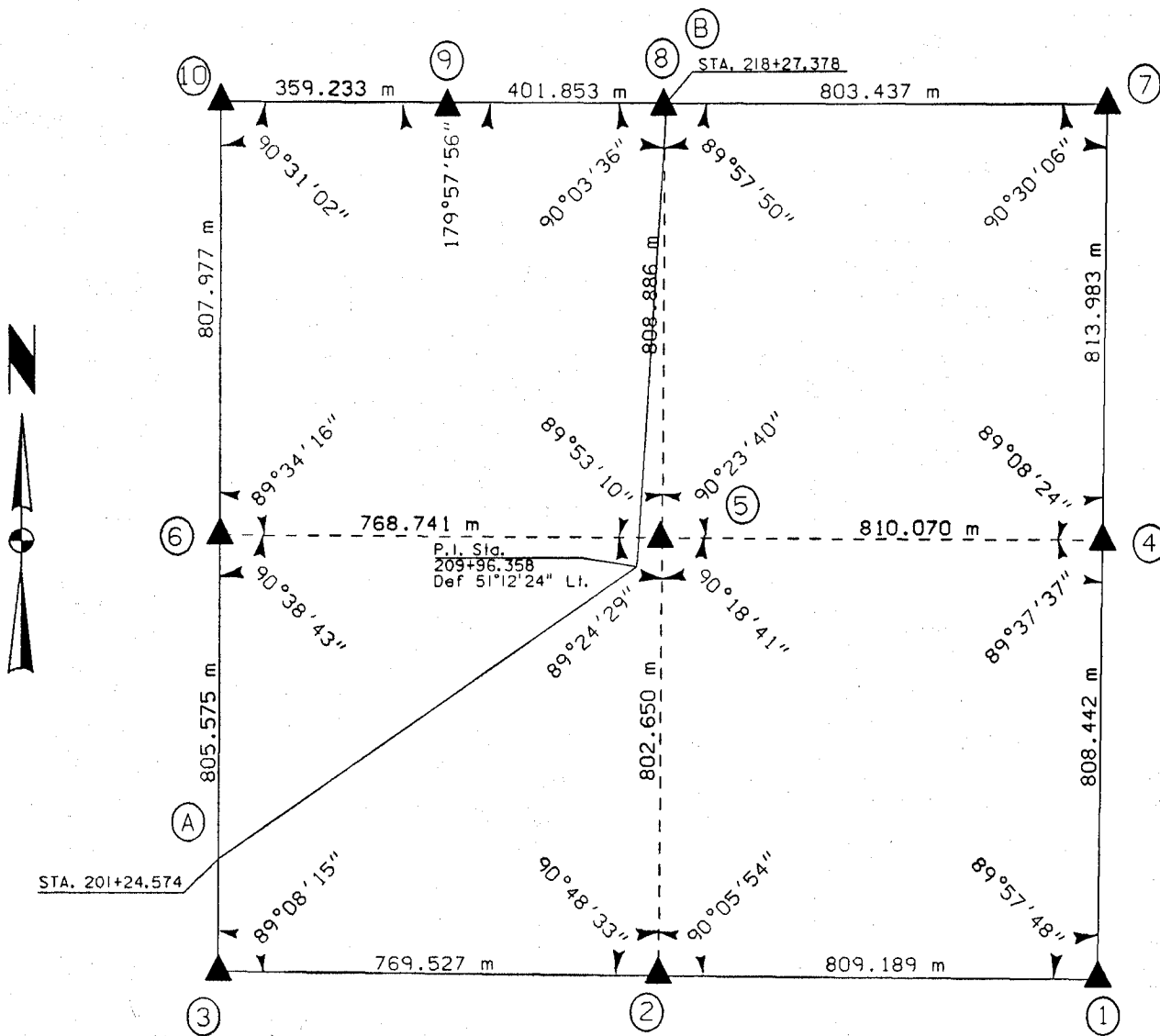
19501 HWY. 64,
ANAMOSA, IOWA,
52205 (319)462-3785

UNITED STATES PUBLIC SECTION CORNER CERTIFICATION
AND LAND CORNER SURVEY
SECTION 30 T-85N R-3W

MADE FOR
IOWA DEPARTMENT OF TRANSPORTATION FOR THE PURPOSE OF
RIGHT OF WAY DESCRIPTIONS ON PRIMARY ROAD No. U.S. 151

MADE BY
MICHAEL R. FAGLE R.L.S. No. 8505
JONES COUNTY, IOWA NHS-151-3(84)--19-57
APRIL 1998 THRU OCTOBER 1998

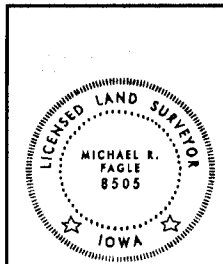
ALL DISTANCES WERE CAREFULLY MEASURED AND MAY NOT AGREE WITH ROAD SURVEY STATIONING



85425e-012199
85425o-012199
85330b-012199
85330e-012199
85330c-012199
EARTH
85330m-012199
85330o-012199
85330u-012199
85330w-012199
85330y-012199



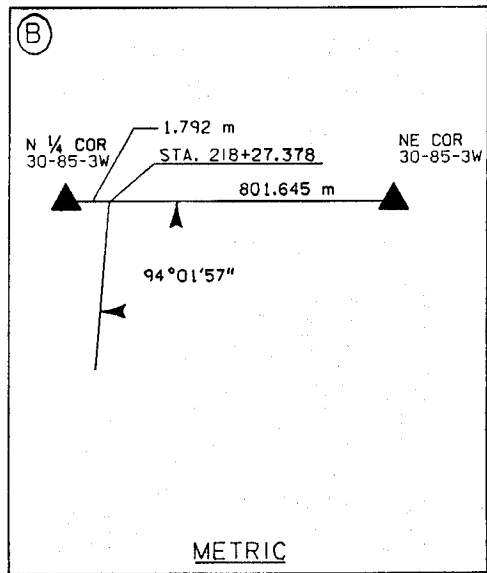
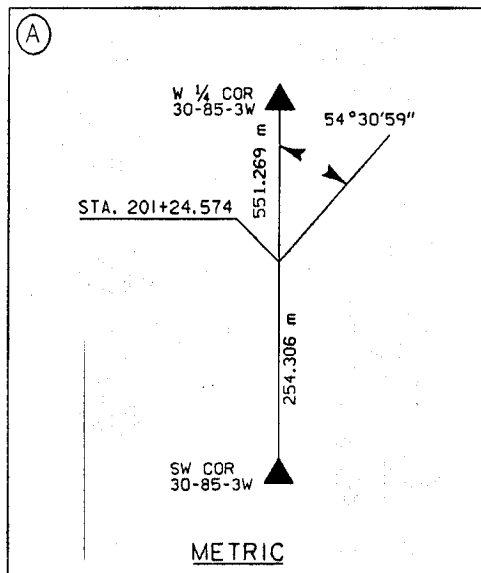
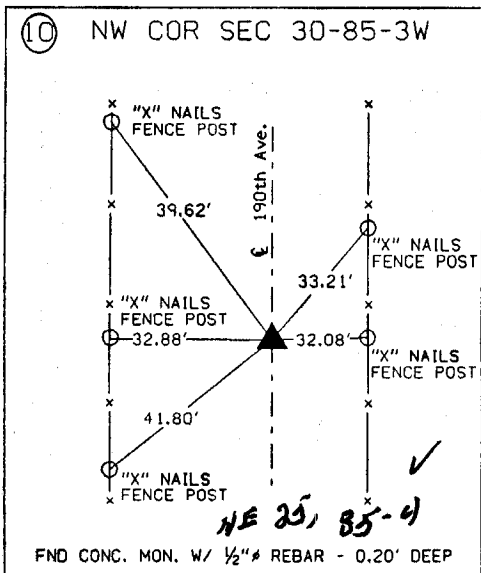
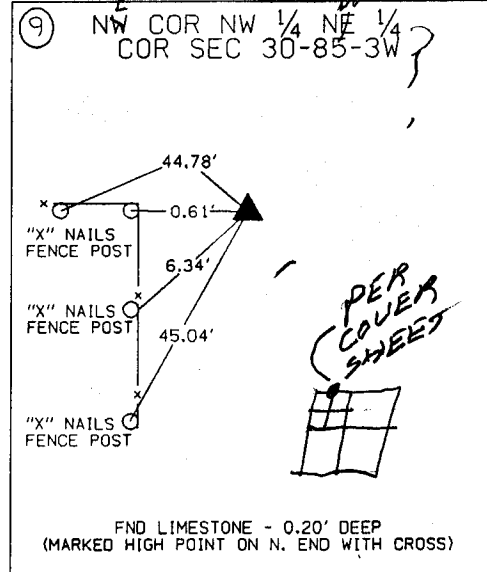
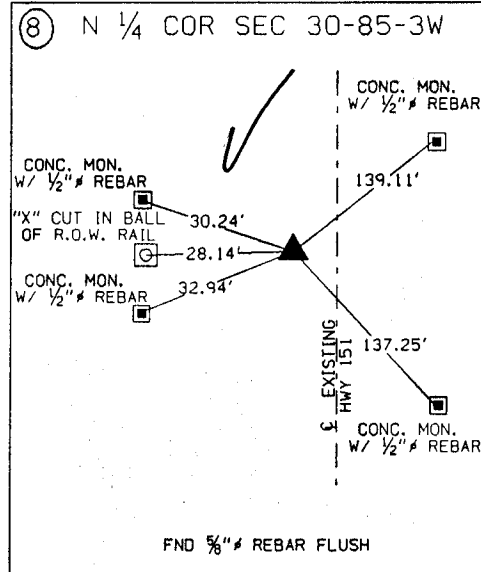
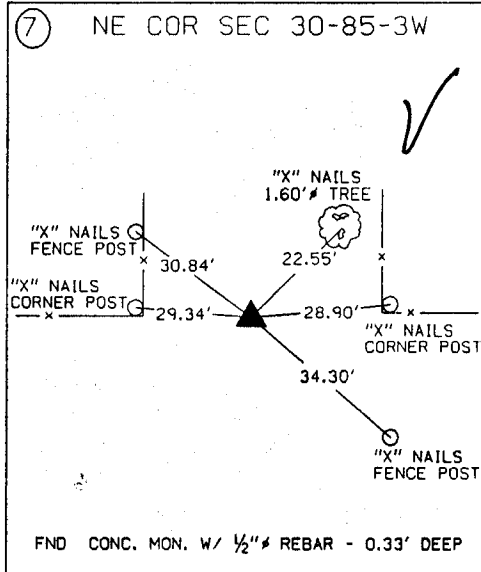
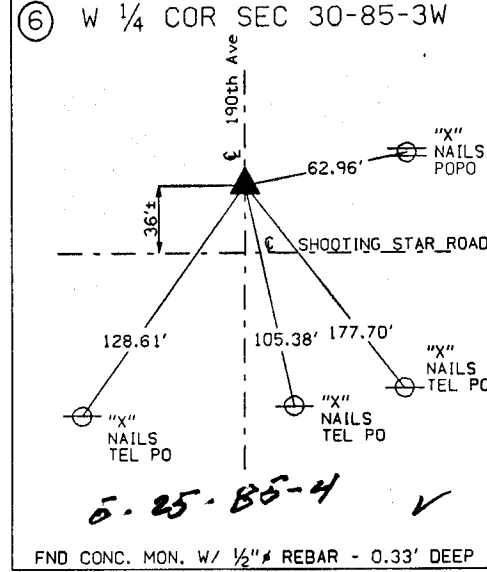
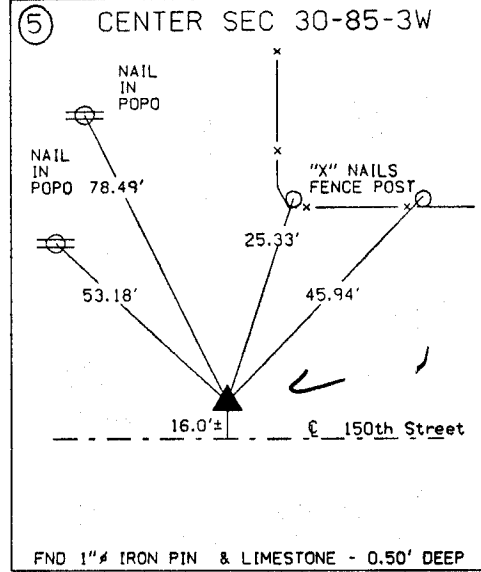
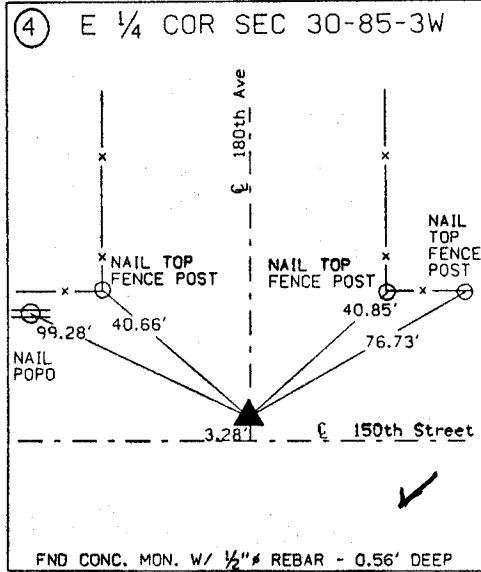
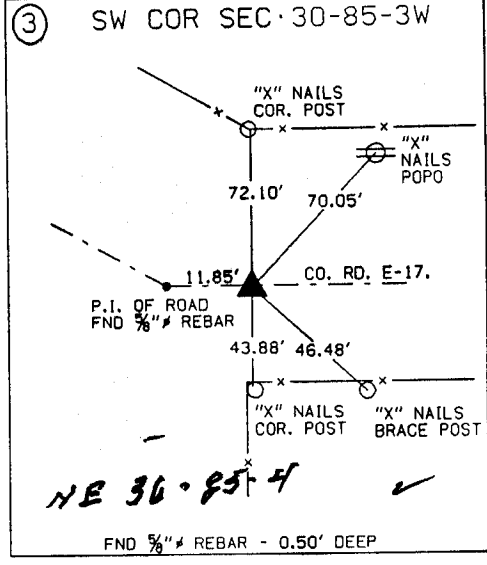
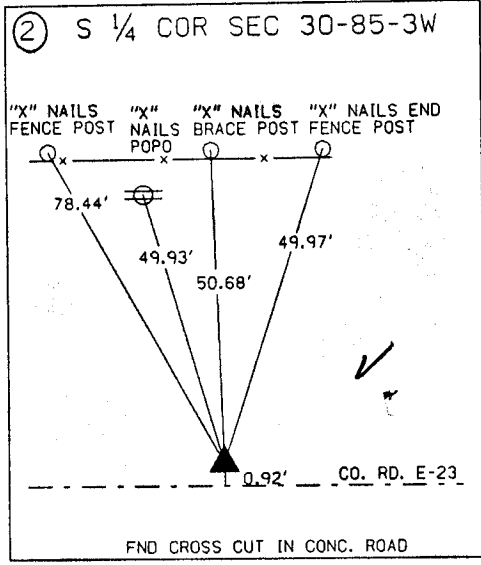
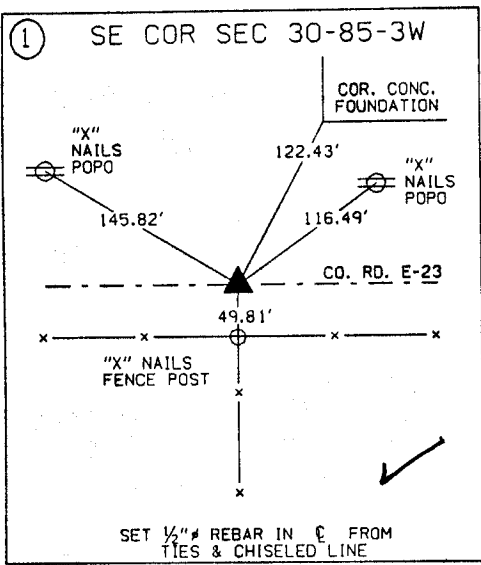
T E C H



I hereby certify that this Land Surveying document was prepared by me or under my direct personal supervision and that I am a duly Licensed Land Surveyor under the laws of the State of Iowa.
Michael R. Fagle 1-21-99
MICHAEL R. FAGLE Date
License number 8505
My license renewal date is December 31, 2000
Pages or sheets covered by this seal:
Two (2)

METRIC

**UNITED STATES PUBLIC SECTION CORNER CERTIFICATION
AND LAND CORNER SURVEY
SECTION 30 T-85N R-3W**



ALL TIES ARE ENGLISH UNLESS OTHERWISE NOTED