

Instrument #: 2015-1962
 07/07/2015 09:17:13 AM Total Pages: 1
 ZSC SECTION CORNER CERTIFICATE
 Recording Fee: \$7.00 Transfer Tax: \$0
 Marie Krutzfield, Recorder, Jones County Iowa



PREPARED BY: MICHAEL J. WEBER, WEBER SURVEYING, LLC, 26789 46TH AVE, BERNARD, IA 52032 (563) 879-4173

UNITED STATES PUBLIC LAND SURVEY CORNER CERTIFICATE OF

LAND SURVEY MONUMENTS SITUATED IN SECTION 33, TOWNSHIP 85 NORTH, RANGE 3 WEST OF THE FIFTH PRINCIPAL MERIDIAN, JONES COUNTY, IOWA, PREVIOUSLY RECORDED SEE NOTES BELOW

(book, page, document number, etc.)

(Show reason for preparing this certificate, the evidence and detailed procedures used in establishing the corner positions and monumentation found or placed.)

Monument Description and Remarks:

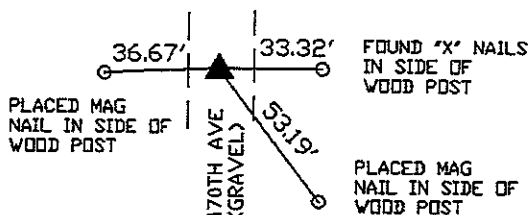
-WEST 1/4 SEC. 33, T.85N, R.3W. OF THE 5TH P.M. FOUND 5/8" STEEL REROD PER SEC. COR CERT. DOC. NO. 97 98 1278 OF THE JONES COUNTY RECORDER'S OFFICE ESTABLISHED NEW TIES.

-SW COR. NW-SW, SEC. 33, T.85N, R.3W. OF THE 5TH P.M. FOUND 1/2" STEEL REROD PER SEC. COR CERT. DOC. NO. 2002 1365 OF THE JONES COUNTY RECORDER'S OFFICE. ESTABLISHED NEW TIES.

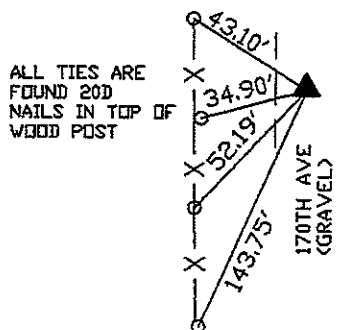
-SE CORNER, NW-SW, SEC. 33, T.85N, R.3W. OF THE 5TH P.M. PLACED 5/8" STEEL REROD W/ORANGE PLASTIC CAP MARKED 'WEBER PLS 15084' ESTABLISHED CORNER BY BREAKING DOWN THE SW 1/4 OF SAID SECTION 33.

(Show a minimum of three reference ties to durable physical objects, relevant monuments and physical conditions that will enable recovery of the corner.)

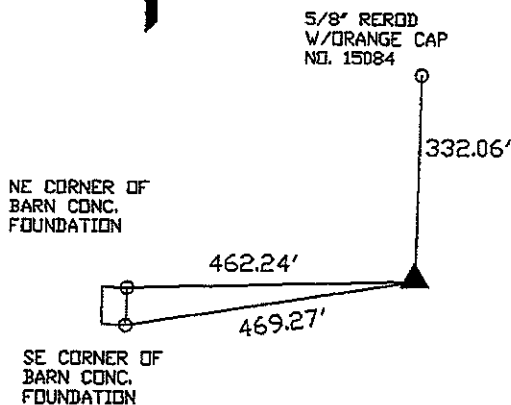
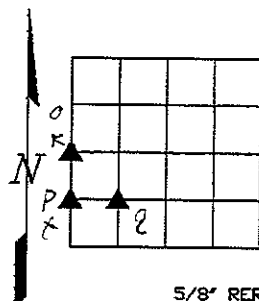
PLAN - VIEW



WEST 1/4 SEC. 33, T.85N, R.3W. OF THE 5TH P.M. FOUND 5/8" STEEL REROD PER SEC. COR CERT. DOC. NO. 97 98 1278 OF THE JONES COUNTY RECORDER'S OFFICE

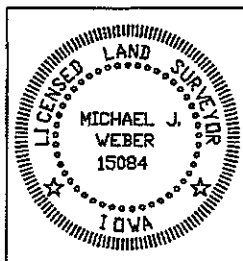


SW COR. NW-SW, SEC. 33, T.85N, R.3W. OF THE 5TH P.M. FOUND 1/2" STEEL REROD PER SEC. COR CERT. DOC. NO. 2002 1365 OF THE JONES COUNTY RECORDER'S OFFICE



SE COR. NW-SW, SEC. 33, T.85N, R.3W. OF THE 5TH P.M. PLACED A 5/8" REROD W/ORANGE CAP NO. 15084

DWG. 15006



I HEREBY CERTIFY THAT THIS LAND SURVEYING DOCUMENT WAS PREPARED AND THE RELATED SURVEY WORK WAS PERFORMED BY ME OR UNDER MY DIRECT PERSONAL SUPERVISION AND THAT I AM A DULY LICENSED LAND SURVEYOR UNDER THE LAWS OF THE STATE OF IOWA.
Michael J. Weber
 MICHAEL J. WEBER (DATE) July 6, 2015
 LICENSE NUMBER 15084
 MY LICENSE RENEWAL DATE IS DECEMBER 31, 2015
 SHEETS COVERED BY THIS SEAL: This sheet

Corner	Sec	Twp	Range
WEST 1/4 COR.	33	85N	3W
SW COR. NW-SW	33	85N	3W
SE COR. NW-SW	33	85N	3W

2002 1365

FILED
RECORDERS OFFICE
JONES COUNTY IOWA

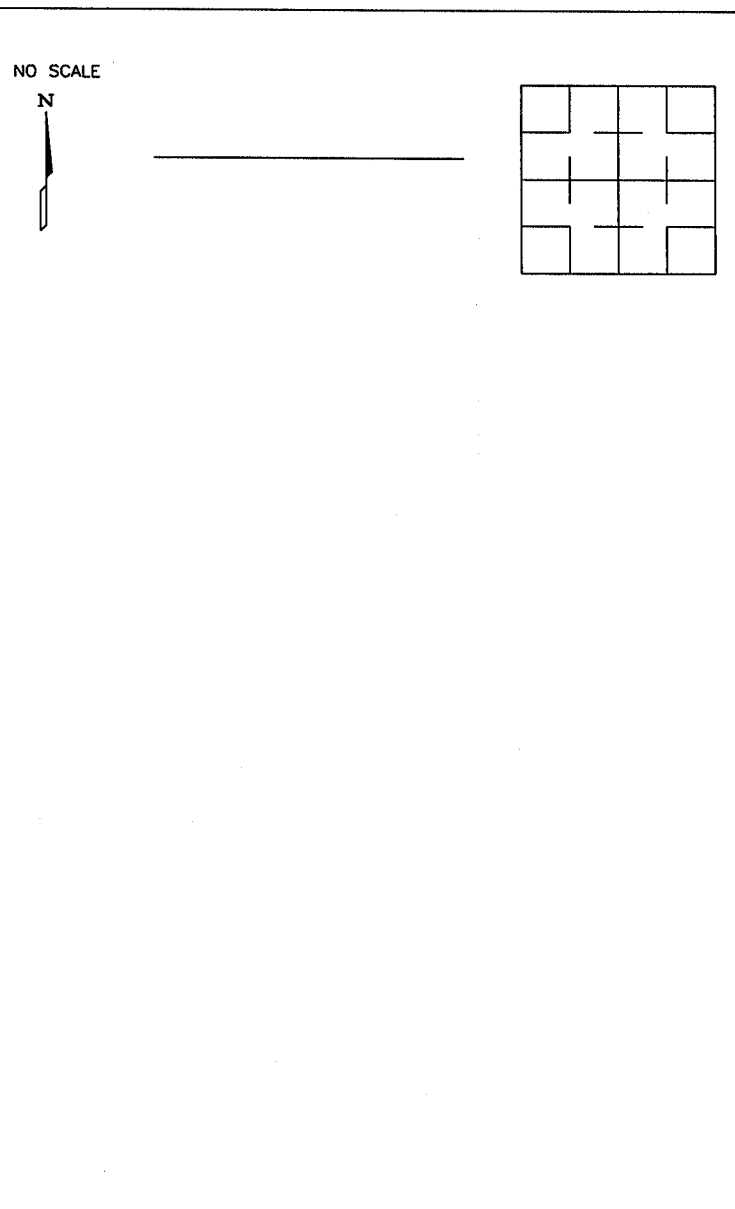
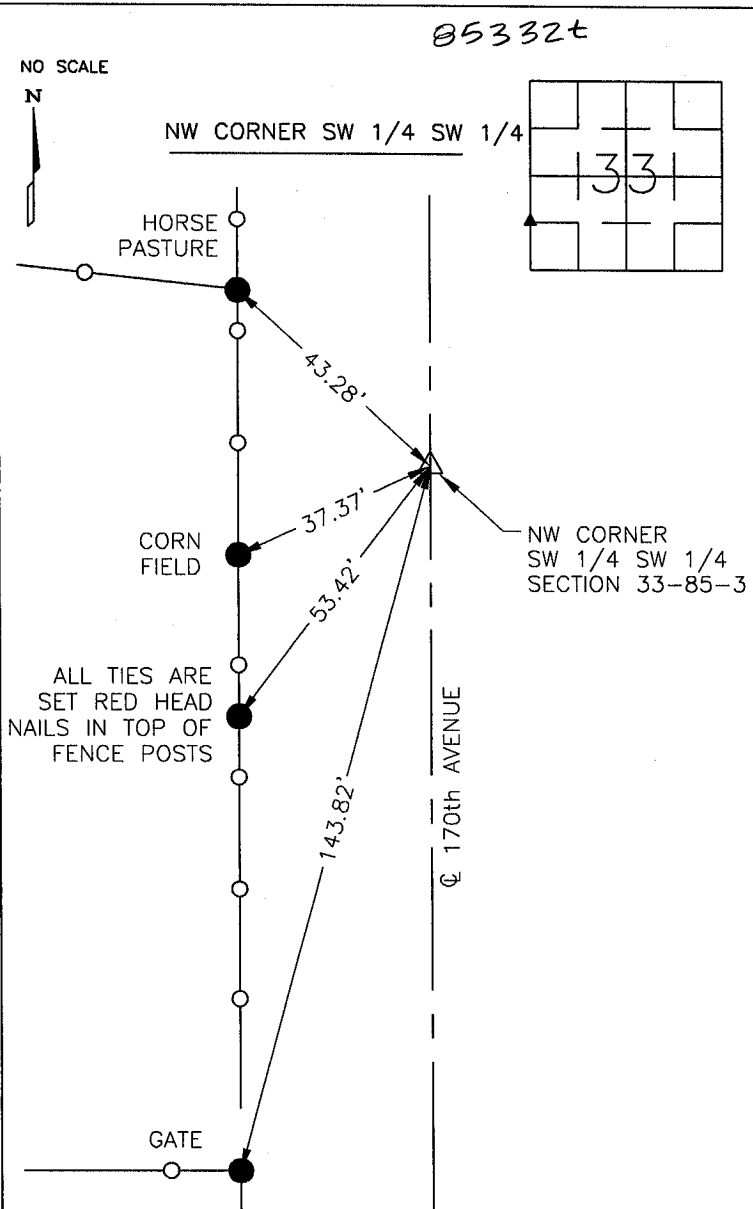
02 APR -4 AM 10:45

MARIE KRUTZFIELD
RECORDER 6.00 Pd

PREPARED BY
STEPHEN MICHAEL BRAIN, BRAIN ENGINEERING, INC., 777 10TH STREET, MARION, IOWA 52302 PH. (319) 373-1318

UNITED STATES PUBLIC LAND SURVEY CORNER CERTIFICATE

LAND SURVEY MONUMENTS SITUATED IN SECTION 33, TOWNSHIP 85 NORTH
RANGE 3 WEST OF THE 5TH P.M., JONES COUNTY, IOWA.



PREVIOUSLY RECORDED IN BOOK _____ PAGE _____
 MONUMENT DESCRIPTION AND HOW ESTABLISHED _____
 SET 1/2" REBAR w/YELLOW CAP #9647 AT MIDPOINT
 ON WEST LINE OF SW 1/4

PREVIOUSLY RECORDED IN BOOK _____ PAGE _____
 MONUMENT DESCRIPTION AND HOW ESTABLISHED _____

LICENSED LAND SURVEYOR
 STEPHEN MICHAEL BRAIN
 9647
 IOWA

I hereby certify that this land surveying document and the related survey work was performed by me or under my direct personal supervision and that I am a duly licensed Land Surveyor under the laws of the State of Iowa.
 Signed *Stephen Michael Brain* Date 4/3/02
 Stephen Michael Brain, L.S.
 My License Renewal Date Is December 31, 2002
 License Number 9647
 Pages or sheets covered by this seal: 1/1

- A. THERE IS NO CERTIFICATE FOR THE CORNER ON FILE WITH THE RECORDER OF THE COUNTY IN WHICH THE CORNER IS LOCATED
- B. THE SURVEYOR IN RESPONSIBLE CHARGE OF THE LAND SURVEYING ACCEPTS A CORNER POSITION WHICH DIFFERS FROM THAT SHOWN IN THE PUBLIC RECORDS OF THE COUNTY IN WHICH THE CORNER IS LOCATED.
- C. THE CORNER MONUMENT IS REPLACED OR MODIFIED IN ANY WAY.
- D. THE REFERENCE TIES REFERRED TO IN AN EXISTING PUBLIC RECORD ARE NOT CORRECT.

CORNERS TO BE INDEXED			
CORNER	SECTION	TOWNSHIP	RANGE
NW CORNER SW 1/4 SW 1/4	33	T85N	R3W

BRAIN ENGINEERING, INC.
 777 10TH STREET
 MARION, IOWA 52302
 (319) 373-1318