

2001 1689

FILED
RECORDERS OFFICE
JONES COUNTY IOWA

01 MAY 21 AM 10:07

MARIE KRUTZFIELD
RECORDER No Fee

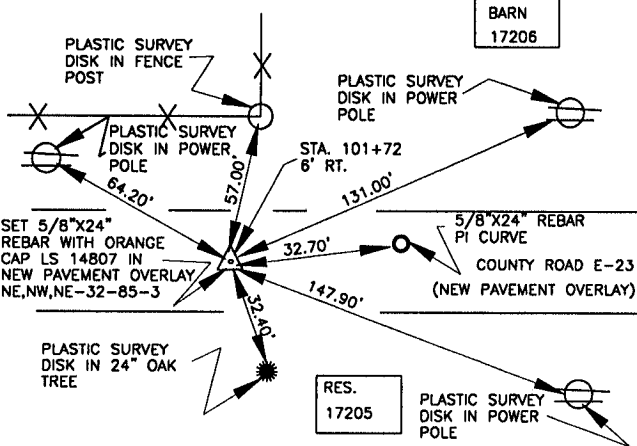
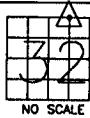
J.D. Tjepkes, LS. JONES COUNTY ENGINEER'S OFFICE, 19501 HWY. 64, ANAMOSA, IOWA, 52205 (319)462-3785

UNITED STATES PUBLIC LAND SURVEY CORNER CERTIFICATE

LAND SURVEY MONUMENTS SITUATED IN SECTION 32, TOWNSHIP 85
NORTH, RANGE 3 WEST OF THE 5TH P.M., JONES COUNTY, IOWA

474 CORNERS TO BE INDEXED

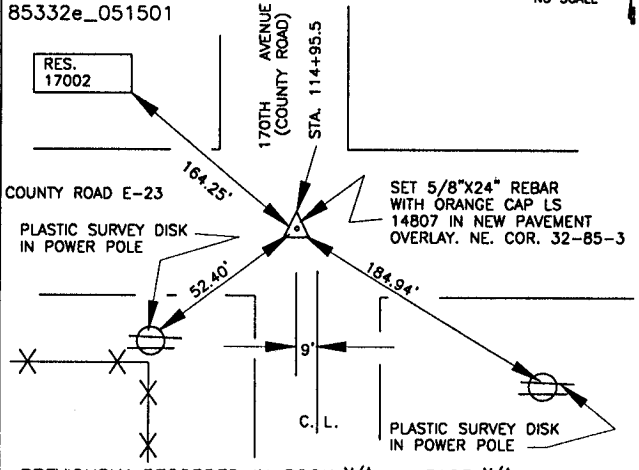
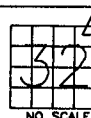
CORNER SECTION TOWNSHIP RANGE
NE,NW,NE 32 85N 3W
OFFICE FILE NO.
85332d_051501



PREVIOUSLY RECORDED IN BOOK N/A, PAGE N/A.
MONUMENT DESCRIPTION AND HOW ESTABLISHED FOUND CROSS CUT IN OLD PAVEMENT PER COUNTY ENGINEER'S TIES, DRILLED HOLE IN NEW PAVEMENT OVERLAY, SET 5/8\"/>

485 CORNERS TO BE INDEXED

CORNER SECTION TOWNSHIP RANGE
NORTHEAST 32 85N 3 WEST
OFFICE FILE NO.
85332e_051501



PREVIOUSLY RECORDED IN BOOK N/A, PAGE N/A.
MONUMENT DESCRIPTION AND HOW ESTABLISHED FOUND PK NAIL IN OLD PAVEMENT PER ENGINEER'S RECORD, DRILLED HOLE IN NEW PAVEMENT OVERLAY, SET 5/8\"/>

CORNERS TO BE INDEXED

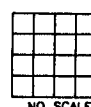
CORNER SECTION TOWNSHIP RANGE
OFFICE FILE NO.



PREVIOUSLY RECORDED IN BOOK _____, PAGE _____
MONUMENT DESCRIPTION AND HOW ESTABLISHED _____

CORNERS TO BE INDEXED

CORNER SECTION TOWNSHIP RANGE
OFFICE FILE NO.



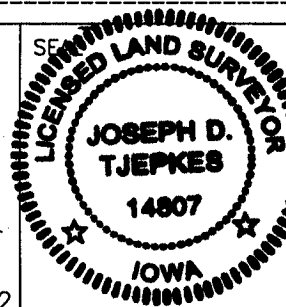
PREVIOUSLY RECORDED IN BOOK _____, PAGE _____
MONUMENT DESCRIPTION AND HOW ESTABLISHED _____

I hereby declare that this plat, survey or report was made by me or under my direct personal supervision and that I am a duly registered Land Surveyor under the laws of the State of Iowa.

Signed:

Joseph D. Tjepkes 5-15-01

Joseph D. Tjepkes L.S. Iowa Reg. No. 14807
My Registration Renewal Date is December 31, 2002



J.D. Tjepkes LS 14807
JONES COUNTY
ENGINEER'S OFFICE

19501 HWY. 64,
ANAMOSA, IOWA,
52205 (319)462-3785

PREPARED BY HALL & HALL ENGINEERS, INC. 209 29TH STREET N.E. CEDAR RAPIDS, IOWA 52402 (319) 362-9548

SECTION CORNER CERTIFICATE

OF

LAND SURVEY MONUMENTS SITUATED IN SECTION 29, TOWNSHIP 85 NORTH, RANGE 3 WEST, OF THE FIFTH PRINCIPAL MERIDIAN, JONES COUNTY, IOWA.

PREVIOUSLY RECORDED IN BOOK _____ AT PAGE _____

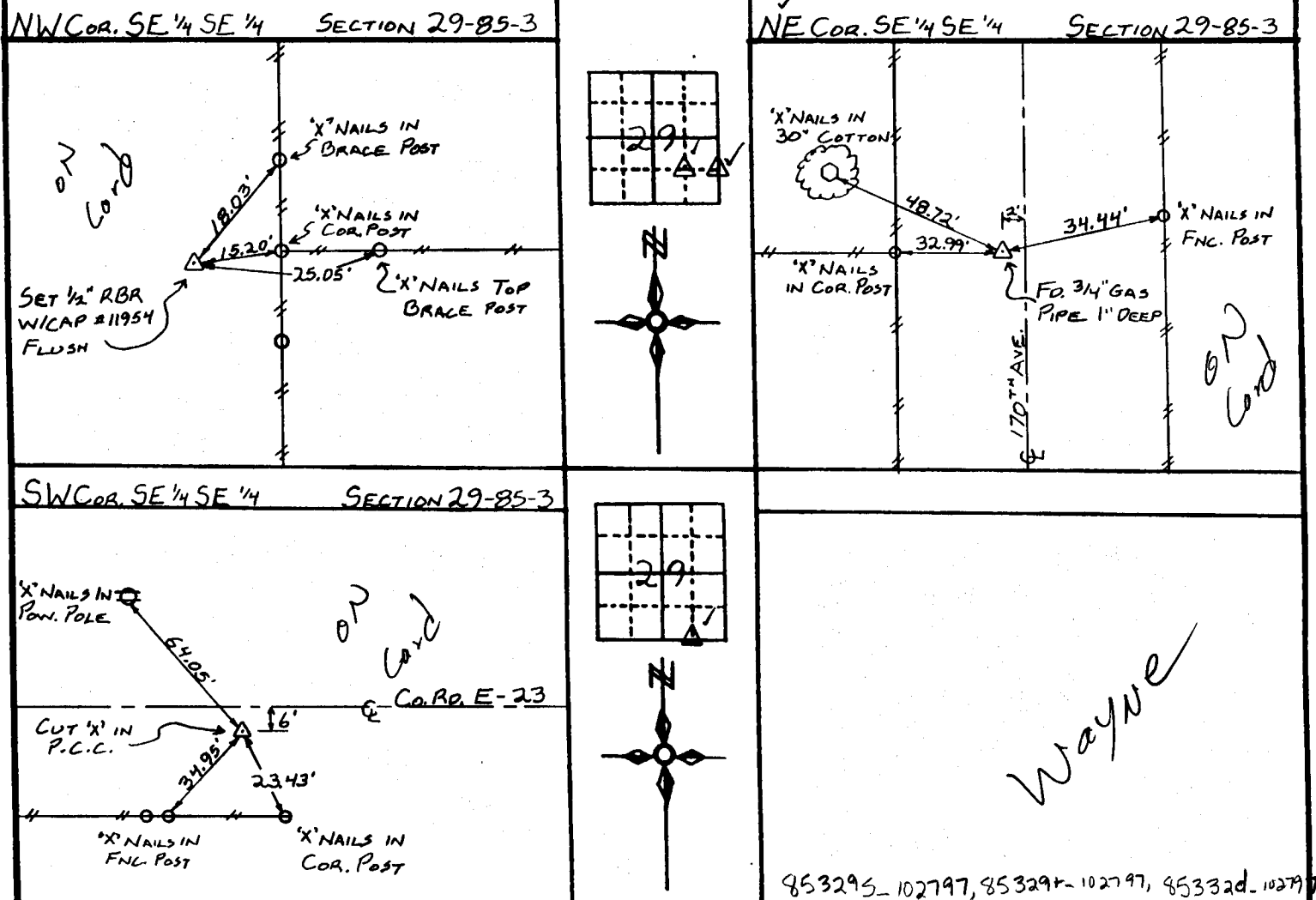
MONUMENT DESCRIPTION AND REMARKS:

NW COR. SE 1/4 SE 1/4 SEC. 29-85-3: SET 1/2" REBAR WITH CAP #11954 FLUSH WITH GROUND

NE COR. SE 1/4 SE 1/4 SEC. 29-85-3: FOUND 3/4" GAS PIPE 1" BELOW SURFACE, 2' ± WEST OF E 170TH AVE.

SW COR. SE 1/4 SE 1/4 SEC. 29-85-3: CUT 'X' IN PAVEMENT 6' SOUTH OF E Co. Rd. E-23

RECOVERY TIE DRAWING



853295-102797, 853296-102797, 85332d-102797

I hereby certify that this land surveying document was prepared and the related survey work was performed by me or under my direct personal supervision and that I am a duly licensed Land Surveyor under the laws of the State of Iowa.

Signed: Daniel J. Johnson Date: 10-27-97
 Daniel J. Johnson, L.S. 11954
 My license renewal date is December 31, 1998

Pages or sheets covered by this seal: (Entire submission unless specified here)

REASON FOR PREPARING CERTIFICATE:

- A) THERE IS NO CERTIFICATE FOR THE CORNER ON FILE WITH THE RECORDER OF THE COUNTY IN WHICH THE CORNER IS LOCATED.
- B) CORNER POSITION DIFFERS FROM THAT SHOWN IN THE PUBLIC RECORDS OF THE COUNTY IN WHICH THE CORNER IS LOCATED.
- C) THE CORNER MONUMENT HAS BEEN REPLACED OR MODIFIED.
- D) THE REFERENCE TIES REFERRED TO IN AN EXISTING PUBLIC RECORD ARE INCORRECT.



△ GOVERNMENT CORNER
 ● PROPERTY CORNER FOUND
 ○ 1/2" x 3/8" W/ LS CAP SET
 - - - EXISTING FENCE LINE
 ——— PROPERTY LINE

SHEET NO. 1 OF 1 US PUBLIC LAND SURVEY RECORD

PROJECT TITLE: ROGER & SHARON HALL - P.O.S.

HALL AND HALL ENGINEERS, INC.
 209 29TH STREET N.E.
 CEDAR RAPIDS, IOWA 52402
 (319) 362-9548

DATE: 9/18/95 SCALE: NONE
 DRAWN BY: JWP CHECKED BY: DJJ APPROVED BY: [Signature] PLOT NO: 5666