

THIS IS NOT A CERTIFICATION

P

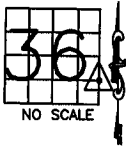
JONES COUNTY ENGINEER'S OFFICE, 19501 HWY. 64, ANAMOSA, IOWA, 52205 (319)462-3785

UNITED STATES PUBLIC LAND SURVEY CORNER CERTIFICATE

LAND SURVEY MONUMENTS SITUATED IN SECTION 36, TOWNSHIP 85 NORTH, RANGE 3 WEST OF THE 5TH P.M., JONES COUNTY, IOWA

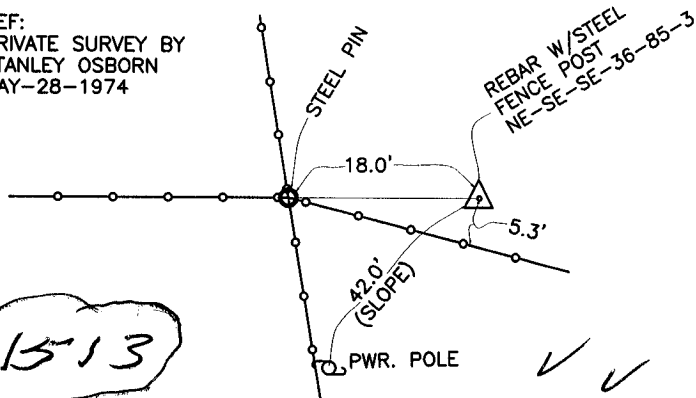
CORNERS TO BE INDEXED

CORNER SECTION TOWNSHIP RANGE
NE-SE-SE 36 85N 3W



OFFICE FILE NO.
85336t_011205.tif

REF:
PRIVATE SURVEY BY
STANLEY OSBORN
MAY-28-1974

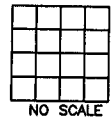


PREVIOUSLY RECORDED IN BOOK _____, PAGE _____
MONUMENT DESCRIPTION AND HOW ESTABLISHED REFERENCE

POINTS AND MONUMENTS INDICATED PER PRIVATE SURVEY BY STANLEY OSBORN-MAY-28-1974. NORTHEAST CORNER OF THE SOUTHEAST QUARTER OF THE SOUTHEAST QUARTER OF SECTION 36, TOWNSHIP 85 NORTH, RANGE 3 WEST OF THE 5TH PRINCIPAL MERIDIAN, JONES COUNTY, IOWA.

CORNERS TO BE INDEXED

CORNER SECTION TOWNSHIP RANGE

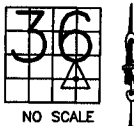


OFFICE FILE NO.

PREVIOUSLY RECORDED IN BOOK _____, PAGE _____
MONUMENT DESCRIPTION AND HOW ESTABLISHED _____

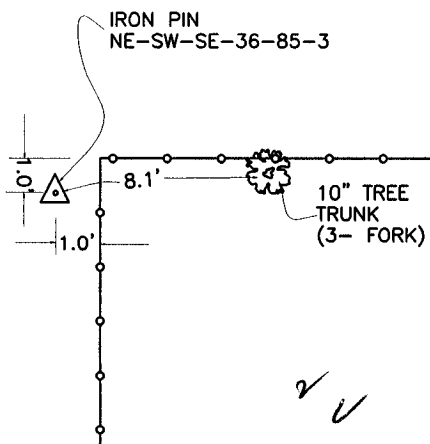
CORNERS TO BE INDEXED

CORNER SECTION TOWNSHIP RANGE
NE-SW-SE 36 85N 3W



OFFICE FILE NO.
85336s_011205.tif

REF:
PRIVATE SURVEY BY
STANLEY OSBORN
MAY-28-1974

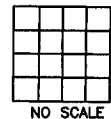


PREVIOUSLY RECORDED IN BOOK _____, PAGE _____
MONUMENT DESCRIPTION AND HOW ESTABLISHED REFERENCE

POINTS AND MONUMENTS INDICATED PER PRIVATE SURVEY BY STANLEY OSBORN-MAY-28-1974. NORTHEAST CORNER OF THE SOUTHWEST QUARTER OF THE SOUTHWEST QUARTER OF SECTION 36, TOWNSHIP 85 NORTH, RANGE 3 WEST OF THE 5TH PRINCIPAL MERIDIAN, JONES COUNTY, IOWA.

CORNERS TO BE INDEXED

CORNER SECTION TOWNSHIP RANGE



OFFICE FILE NO.

PREVIOUSLY RECORDED IN BOOK _____, PAGE _____
MONUMENT DESCRIPTION AND HOW ESTABLISHED _____

~~I hereby declare that this plat, survey or report was made by me or under my direct personal supervision and that I am a duly registered Land Surveyor under the laws of the State of Iowa.~~

Signed:

SEAL

JONES COUNTY ENGINEER'S OFFICE

19501 HWY. 64,
ANAMOSA, IOWA,
52205 (319)462-3785