

COPY

Jones County, Iowa  
 Marie Krutzfield, Recorder  
 Fee Book 2010 3406  
 12/09/2010 @1154AM  
 ZSC SEC COR CERT  
 Book: Page: # Pages: 1  
 Total Fees: \$0.00

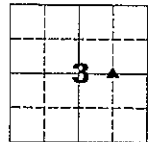
PREPARED BY  
 CLARENCE J. WALTON, JONES COUNTY ENGINEER'S OFFICE, 19501 HWY. 64, ANAMOSA, IOWA, 52205 (319) 462-3785

UNITED STATES PUBLIC LAND  
 SURVEY CORNER CERTIFICATE  
 LAND SURVEY MONUMENTS SITUATED IN SECTION 3, TOWNSHIP 85 NORTH,  
 RANGE 3 WEST OF THE 5TH PRINCIPAL MERIDIAN, JONES COUNTY, IOWA.

PROJECT: M-1311

STATE PLANE COORDINATE  
 NAD 83 IOWA NORTH  
 N 3545083.47  
 E 5551183.97

CORNER SECTION TOWNSHIP RANGE  
 NE CORNER 3 T85N R3W  
 NW 1/4 SE 1/4

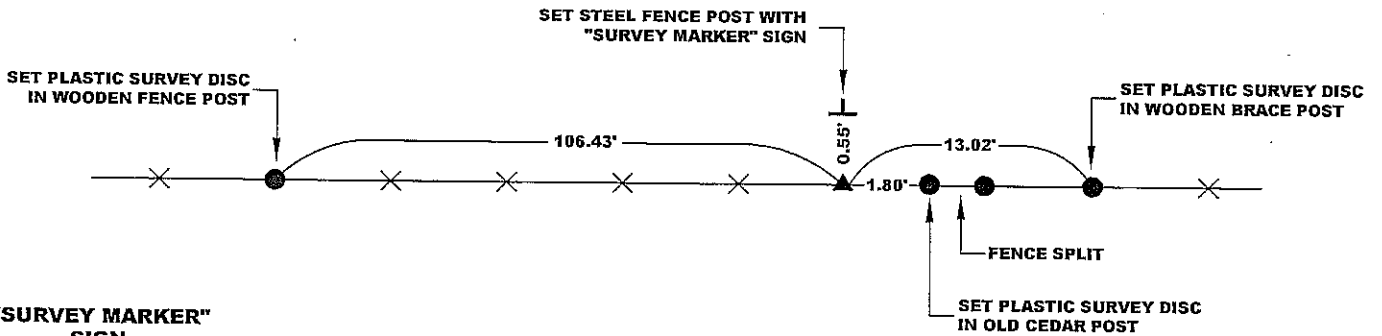


N

NO SCALE

NOTE:  
 THE STATE PLANE COORDINATE AS INDICATED IS FOR CONVENIENCE ONLY.  
 THE TIES AS SHOWN SHOULD BE USED TO REPLACE THE CORNER, IF  
 DESTROYED

CULTIVATED FIELD



"SURVEY MARKER"  
 SIGN

CULTIVATED FIELD

PLEASE  
 PROTECT  
 NEARBY  
**SURVEY  
 MARKER**  
 IF LOCATION OF THIS MARK  
 IS ENDANGERED  
 PLEASE CONTACT  
 JONES COUNTY  
 ENGINEER'S OFFICE  
 319-462-3785

SURVEY DISC

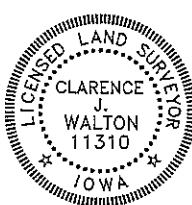


OPC ORANGE PLASTIC CAP  
 ( ) RECORDED AS

PREVIOUSLY RECORDED IN RECORDER'S DOCUMENT N/A

MONUMENT DESCRIPTION AND HOW ESTABLISHED FOUND 2-1/2"X10"X10" QUARTZITE STONE ON EDGE UNDER FENCE LINE WEST OF FENCE SPLIT 3" BELOW GROUND SURFACE. SET FOUR 5/8"X24" REBAR (2 ON EACH FACE OF STONE) FOR STABILIZATION AND DETECTION PURPOSES. TOP OF STONE NOW FLUSH WITH PRESENT GROUND SURFACE. REFERRED TO SURVEY FOR BENEDICT YOUSSE BY HENRY D. SMITH, COUNTY SURVEYOR, DECEMBER 11, 1863; RECORDED IN THE RED SURVEYOR'S RECORD BOOK, PAGE 370 IN THE JONES COUNTY, IOWA RECORDER'S OFFICE. SET STEEL FENCE POST WITH A JONES COUNTY "SURVEY MARKER" SIGN, 0.55' NORTH OF STONE AS A WITNESS TO CORNER.

FIELD BOOK 437, PAGE 78. DATE OF SURVEY: 10/20/10



I hereby certify that this land surveying document and the related survey work was performed by me or under my direct personal supervision and that I am a duly registered Land Surveyor under the laws of the State of Iowa.  
 Signed: *Clarence J. Walton* 12/9/10  
 Clarence J. Walton, L.S.  
 My Registration Renewal Date is December 31, 2011  
 Iowa License Number 11310  
 Pages or sheets covered by this seal: 1 of 1.

- A. THERE IS NO CERTIFICATE FOR THE CORNER ON FILE WITH THE RECORDER OF THE COUNTY IN WHICH THE CORNER IS LOCATED.
- B. THE CORNER MONUMENT HAS BEEN REPLACED OR MODIFIED.
- C. THE SURVEYOR IN RESPONSIBLE CHARGE OF THE LAND SURVEYING ACCEPTS A CORNER POSITION THAT DIFFERS FROM THAT SHOWN IN THE PUBLIC RECORDS OF THE COUNTY IN WHICH THE CORNER IS LOCATED.
- D. THE REFERENCE TIES REFERRED TO IN AN EXISTING PUBLIC RECORD NO LONGER EXIST.

CORNERS TO BE INDEXED

CORNER	SECTION	TOWNSHIP	RANGE
NE CORNER NW 1/4 SE 1/4	3	85N	3W
SE CORNER SW 1/4 NE 1/4	3	85N	3W
SW CORNER SE 1/4 NE 1/4	3	85N	3W
NW CORNER NE 1/4 SE 1/4	3	85N	3W

JONES COUNTY ENGINEER'S OFFICE



19501 HWY. 64, ANAMOSA, IOWA 52205  
 (319) 462-3785