

Jones County Marie Krutzfield Recorder  
Fee Book 2012 2813  
09/25/2012 @1207PM # Pages 2  
ZSC SEC COR CERT  
Total Fees: \$0.00

PREPARED BY  
CLARENCE J. WALTON, JONES COUNTY ENGINEER'S OFFICE, 19501 HWY. 64, ANAMOSA, IOWA, 52205 (319) 462-3785

UNITED STATES PUBLIC LAND  
SURVEY CORNER CERTIFICATE  
LAND SURVEY MONUMENTS SITUATED IN SECTION 7, TOWNSHIP 85 NORTH,  
RANGE 3 WEST OF THE 5TH PRINCIPAL MERIDIAN, JONES COUNTY, IOWA.

COVER SHEET  
FOR  
UNITED STATES PUBLIC LAND SURVEY  
CORNER CERTIFICATE  
REGARDING  
THE NE CORNER  
OF  
SECTION 7, TOWNSHIP 85 NORTH, RANGE 3 WEST OF  
THE 5TH PRINCIPAL MERIDIAN, JONES COUNTY, IOWA.

PAGE 1 of 2



I hereby certify that this land surveying document and the related survey work was performed by me or under my direct personal supervision and that I am a duly registered Land Surveyor under the laws of the State of Iowa.

Signed:

*Clarence J. Walton* 9/25/12

Clarence J. Walton, L.S.  
My Registration Renewal Date is December 31, 2013  
Iowa License Number 11310  
Pages or sheets covered by this seal: 1 of 2

JONES COUNTY ENGINEER'S OFFICE



19501 HWY. 64, ANAMOSA, IOWA 52205  
(319) 462-3785

# UNITED STATES PUBLIC LAND SURVEY CORNER CERTIFICATE

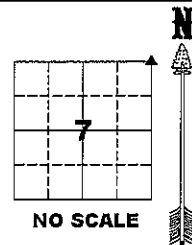
LAND SURVEY MONUMENTS SITUATED IN SECTION 7, TOWNSHIP 85 NORTH,  
 RANGE 3 WEST OF THE 5TH PRINCIPAL MERIDIAN, JONES COUNTY, IOWA.

NE CORNER SECTION 18-T85N-R3W  
 STATE PLANE COORDINATE (NAD 83 IOWA NORTH)  
 N: 3542060.27  
 E: 5536599.43

CORNER SECTION TOWNSHIP RANGE  
 NE 7 T85N R3W

**NOTES:**

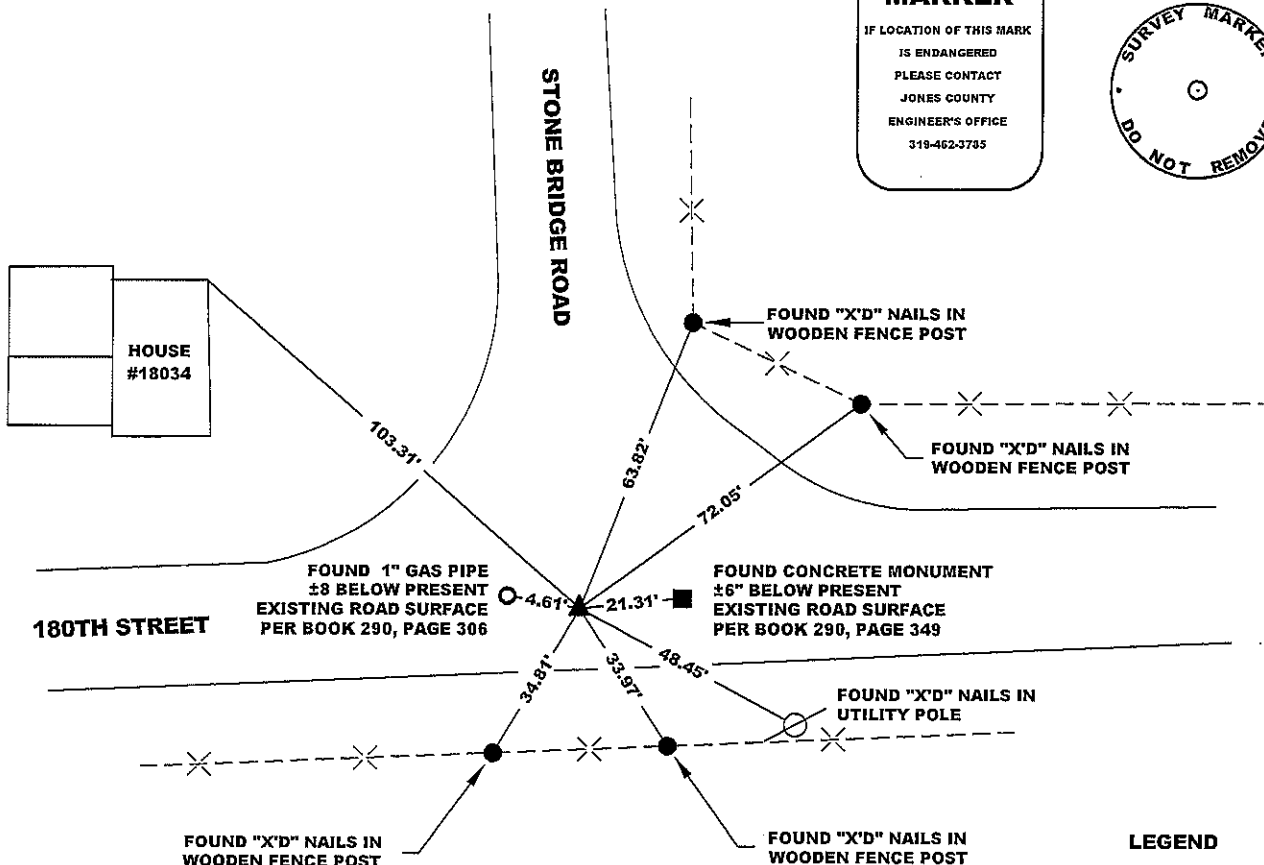
- 1) THE STATE PLANE COORDINATES AS SHOWN ARE FOR CONVENIENCE ONLY. THE TIES AS SHOWN SHOULD BE USED TO REPLACE THE CORNER, IF DESTROYED.
- 2) COORDINATES AS SHOWN ARE GRID COORDINATES AND BASED ON JONES COUNTY G.P.S. CONTROL NETWORK WHICH IN TURN IS BASED ON NAD 83 IOWA NORTH DATUM.
- 3) ALL MEASUREMENTS ARE IN FEET AND DECIMALS THEREOF.
- 4) \* GRID DISTANCE, BASED ON JONES COUNTY G.P.S. CONTROL NETWORK.



**"SURVEY MARKER" SIGN**

PLEASE PROTECT NEARBY  
**SURVEY MARKER**  
 IF LOCATION OF THIS MARK IS ENDANGERED PLEASE CONTACT JONES COUNTY ENGINEER'S OFFICE 319-462-3785

**SURVEY DISC**



**PAGE 2 of 2**

PREVIOUSLY RECORDED IN BOOK 290, PAGE 306; BOOK 290, PAGE 349; (SEE NARRATIVE BELOW)

**MONUMENT DESCRIPTION AND HOW ESTABLISHED** THIS IS SOMEWHAT OF A PIN CUSHION. NO TIES WERE EVER FILED ON THE CORNER THAT IS BEING CERTIFIED HERE. THE CONCRETE MONUMENT WAS SET BY THE IOWA HIGHWAY COMMISSION BY DOUBLING OVER THE DISTANCE FROM THE N 1/4 CORNER OF SECTION 8-T85N-R3W AND THE NW CORNER NE 1/4 NW 1/4 OF SAID SECTION 8. FOR REFERENCE TO THE AFORESAID PLEASE REFER TO A COPY OF "LAND CORNER SURVEY T-84 & 85-N R-3 & 4-W MADE FOR THE IOWA STATE HIGHWAY COMMISSION FOR PURPOSE OF R.O.W. DESCRIPTIONS ON U.S. HIGHWAY NO. 151 FROM THE TOWN OF ANAMOSA NORTHEAST TO THE TOWN OF MONTICELLO. BY JOHN D. FRANKLIN MARCH-APRIL 1959." THIS IS ON FILE WITH THE JONES COUNTY ENGINEER'S OFFICE. THE GAS PIPE HAS BEEN IN PLACE FOR AT LEAST 22 YEARS (BASED ON CORNER CERTIFICATE REFERENCED IN THE DRAWING ABOVE). HOW IT CAME TO BE IS UNKNOWN. THE STONE HAS BEEN KNOWN ABOUT BY THE JONES COUNTY ENGINEERING DEPARTMENT IN EXCESS OF 30 YEARS. ALSO, THE STONE'S POSITION AGREES WITH COUNTY ROAD RECORDS WHICH SHOW STONE BRIDGE ROAD HAVING BEEN ESTABLISHED BY COMMENCING AT THE NE CORNER OF SECTION 6-T85N-R3W AND RUNNING SOUTH AND BEING CENTERED ON THE EAST LINES OF SAID SECTION 6 AND THE EAST LINE OF SECTION 7-T85N-R3W. FOR FURTHER REFERENCE PLEASE REFER TO THE "INDEX & ROAD RECORD TWP'S 85-86 (TAPED OVER) IN THE VAULT AT JONES COUNTY ENGINEER'S OFFICE.

FIELD BOOK N/A. DATE OF SURVEY: 9/20/12



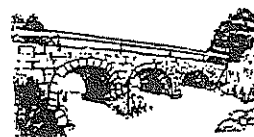
I hereby certify that this land surveying document and the related survey work was performed by me or under my direct personal supervision and that I am a duly registered Land Surveyor under the laws of the State of Iowa.  
 Signed: *Clarence J. Walton* 9/25/12  
 Clarence J. Walton, L.S.  
 My Registration Renewal Date is December 31, 2013  
 Iowa License Number 11310  
 Pages or sheets covered by this seal: 2 of 2

- A. THERE IS NO CERTIFICATE FOR THE CORNER ON FILE WITH THE RECORDER OF THE COUNTY IN WHICH THE CORNER IS LOCATED.
- B. THE CORNER MONUMENT HAS BEEN REPLACED OR MODIFIED.
- C. THE SURVEYOR IN RESPONSIBLE CHARGE OF THE LAND SURVEYING ACCEPTS A CORNER POSITION THAT DIFFERS FROM THAT SHOWN IN THE PUBLIC RECORDS OF THE COUNTY IN WHICH THE CORNER IS LOCATED.
- D. THE REFERENCE TIES REFERRED TO IN AN EXISTING PUBLIC RECORD NO LONGER EXIST.
- E. ADDED ADDITIONAL INFORMATION TO EXISTING TIES.

**CORNERS TO BE INDEXED**

CORNER	SECTION	TOWNSHIP	RANGE
NE	7	85N	3W
SE	6	85N	3W
SW	5	85N	3W
NW	8	85N	3W

**JONES COUNTY ENGINEER'S OFFICE**



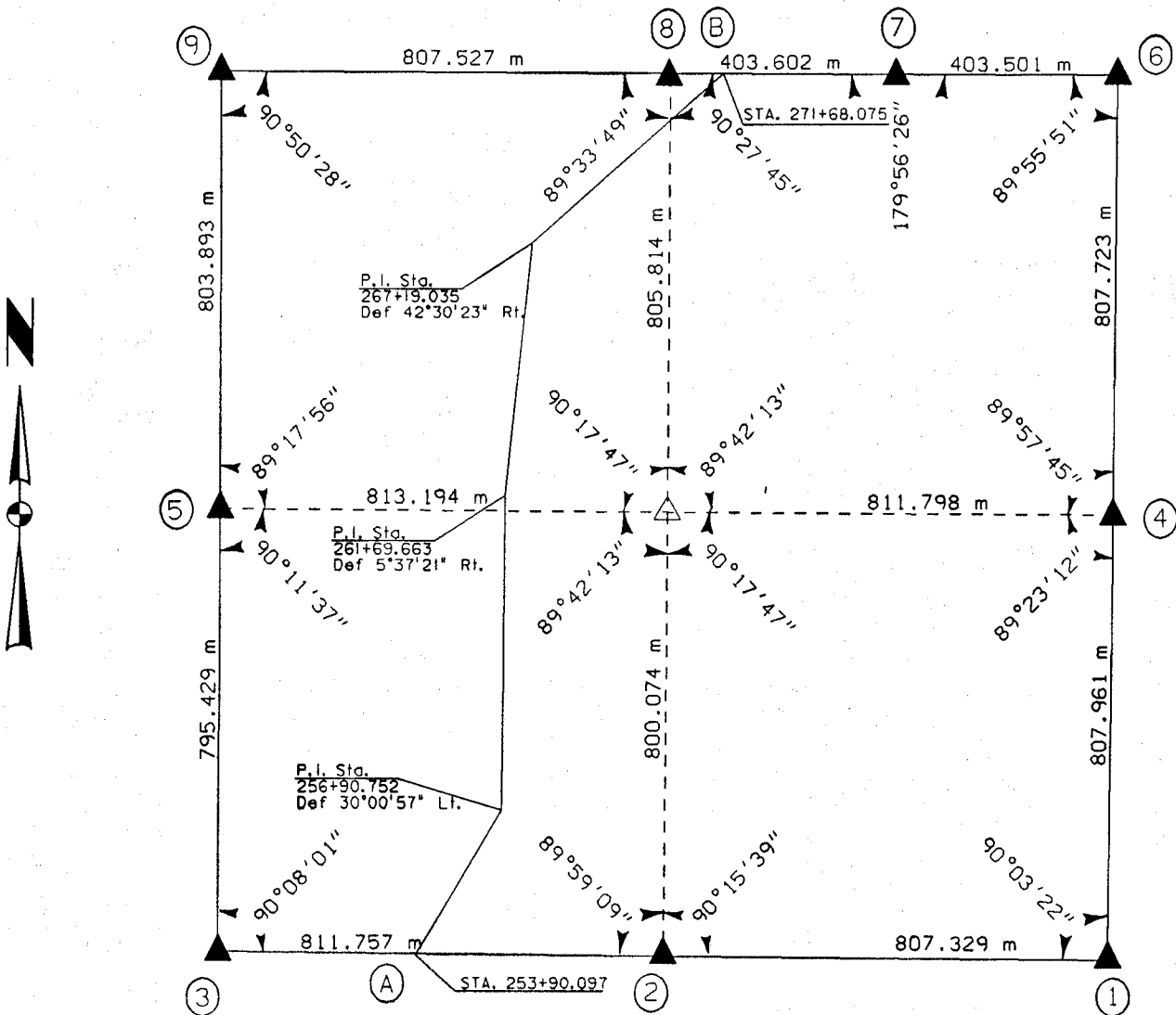
19501 HWY. 64, ANAMOSA, IOWA 52205  
 (319) 462-3785

UNITED STATES PUBLIC SECTION CORNER CERTIFICATION  
AND LAND CORNER SURVEY  
SECTION 8 T-85N R-3W

MADE FOR  
IOWA DEPARTMENT OF TRANSPORTATION FOR THE PURPOSE OF  
RIGHT OF WAY DESCRIPTIONS ON PRIMARY ROAD No. U.S. 151

MADE BY  
MICHAEL R. FAGLE R.L.S. No. 8505  
JONES COUNTY, IOWA NHS-151-3(84)--19-57  
APRIL 1998 THRU OCTOBER 1998

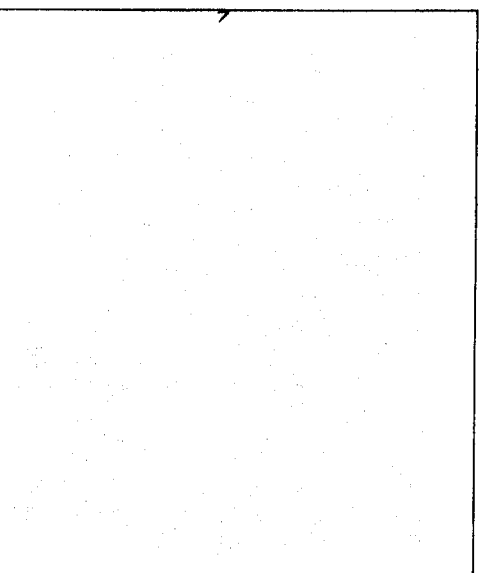
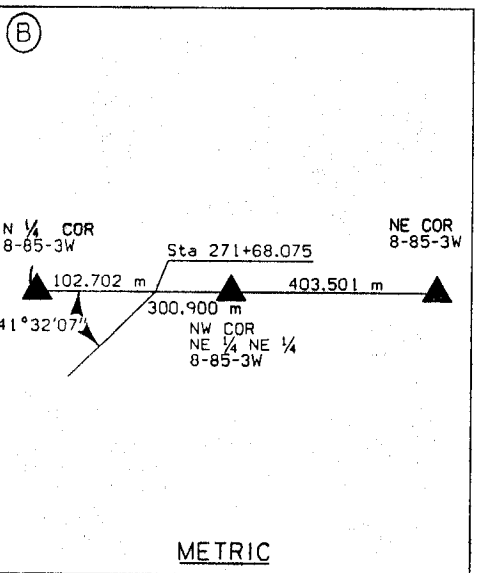
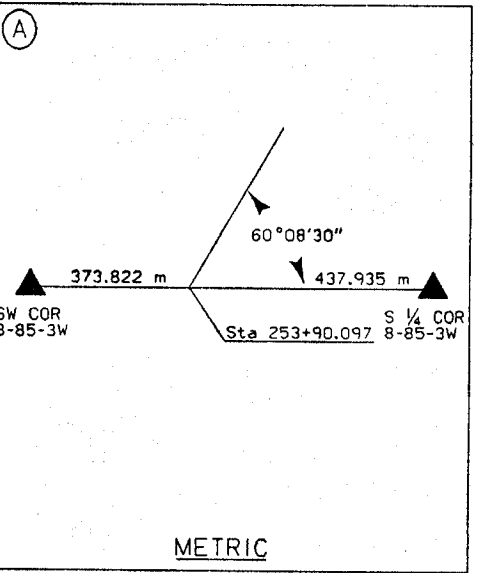
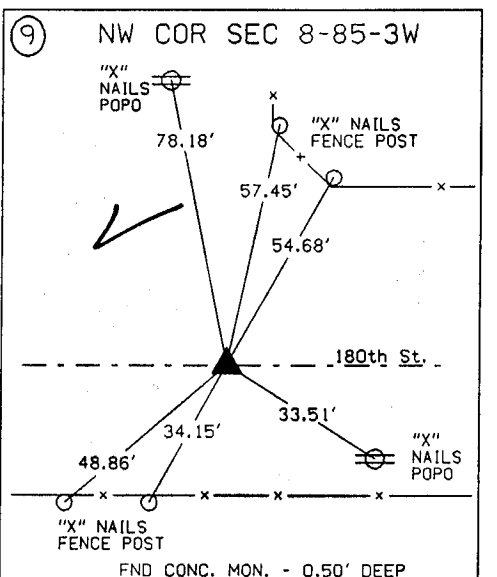
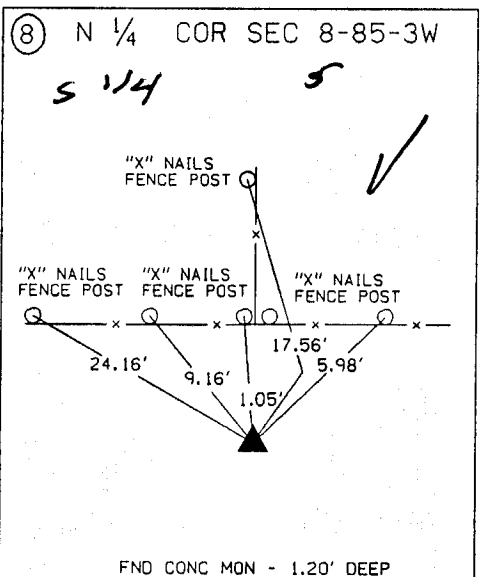
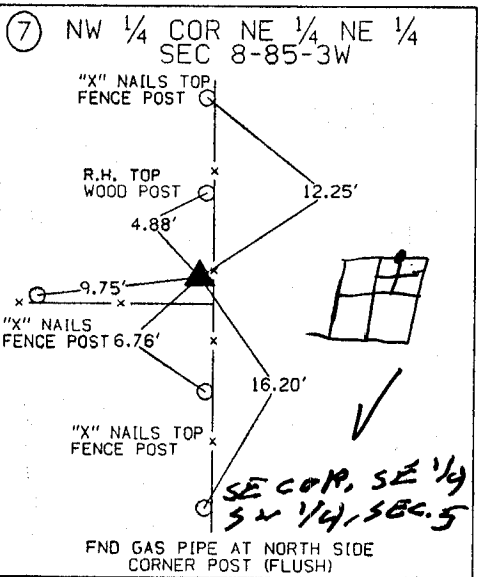
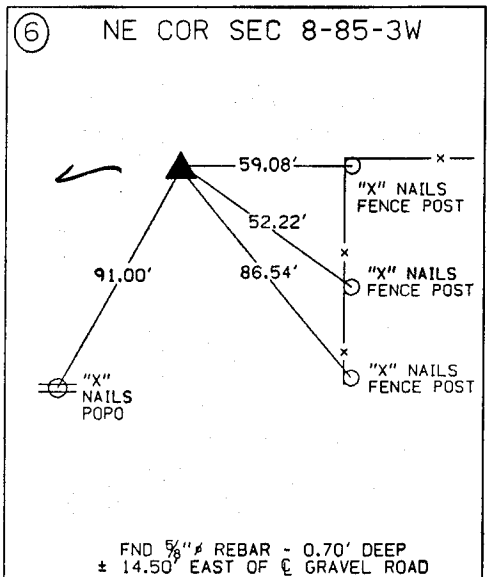
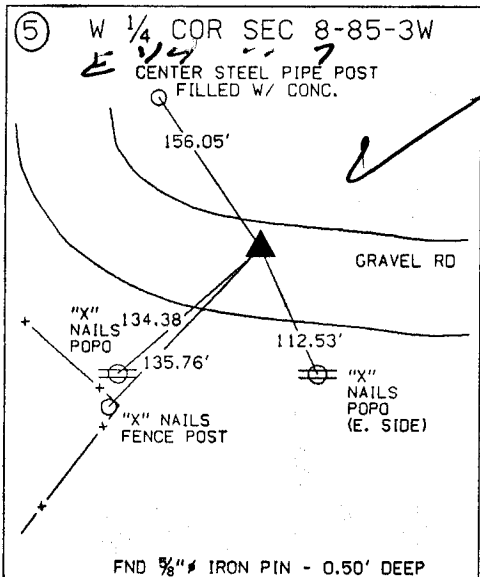
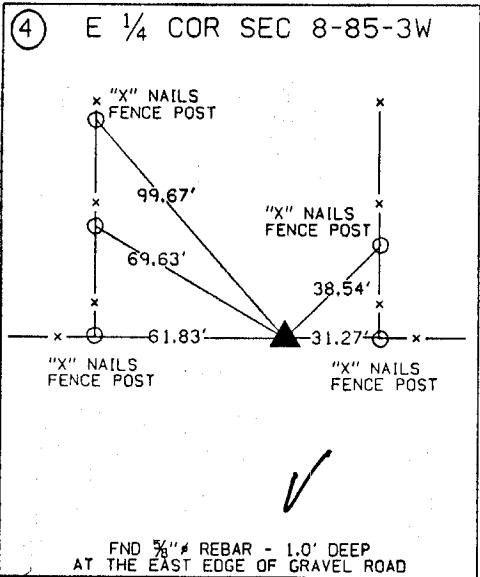
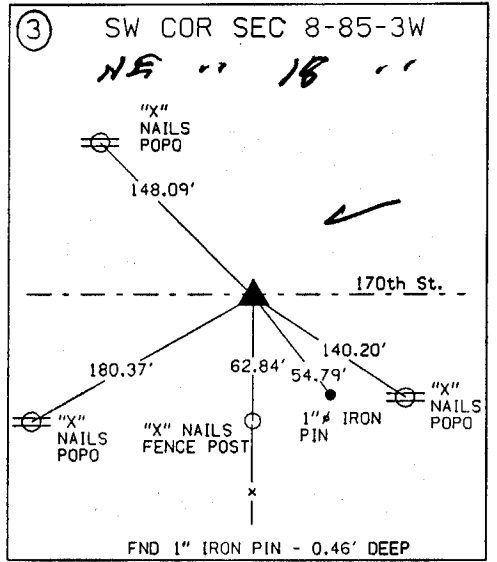
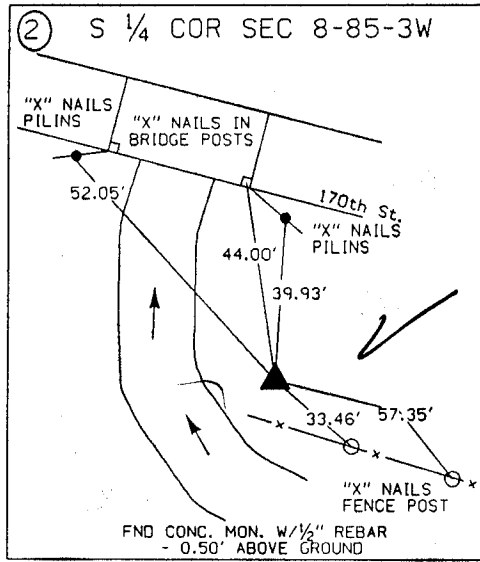
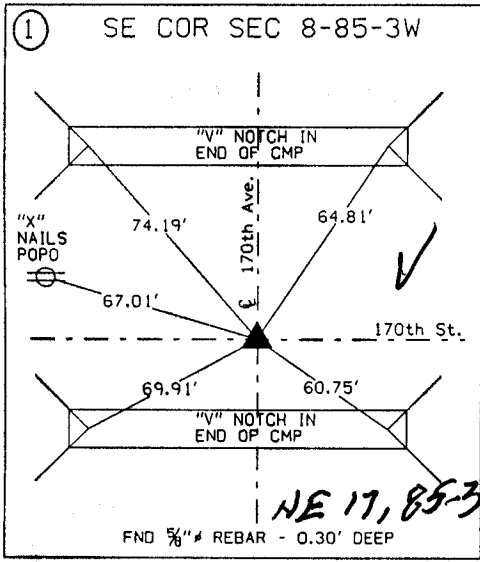
ALL DISTANCES WERE CAREFULLY MEASURED AND MAY NOT AGREE WITH ROAD SURVEY STATIONING



	I hereby certify that this Land Surveying document was prepared by me or under my direct personal supervision and that I am a duly Licensed Land Surveyor under the laws of the State of Iowa. <i>Michael R. Fagle</i> 1-21-99 MICHAEL R. FAGLE Date
	License number 8505 My license renewal date is December 31, 2000 Pages or sheets covered by this seal: Two (2)

**METRIC**

UNITED STATES PUBLIC SECTION CORNER CERTIFICATION  
AND LAND CORNER SURVEY  
SECTION 8 T-85N R-3W



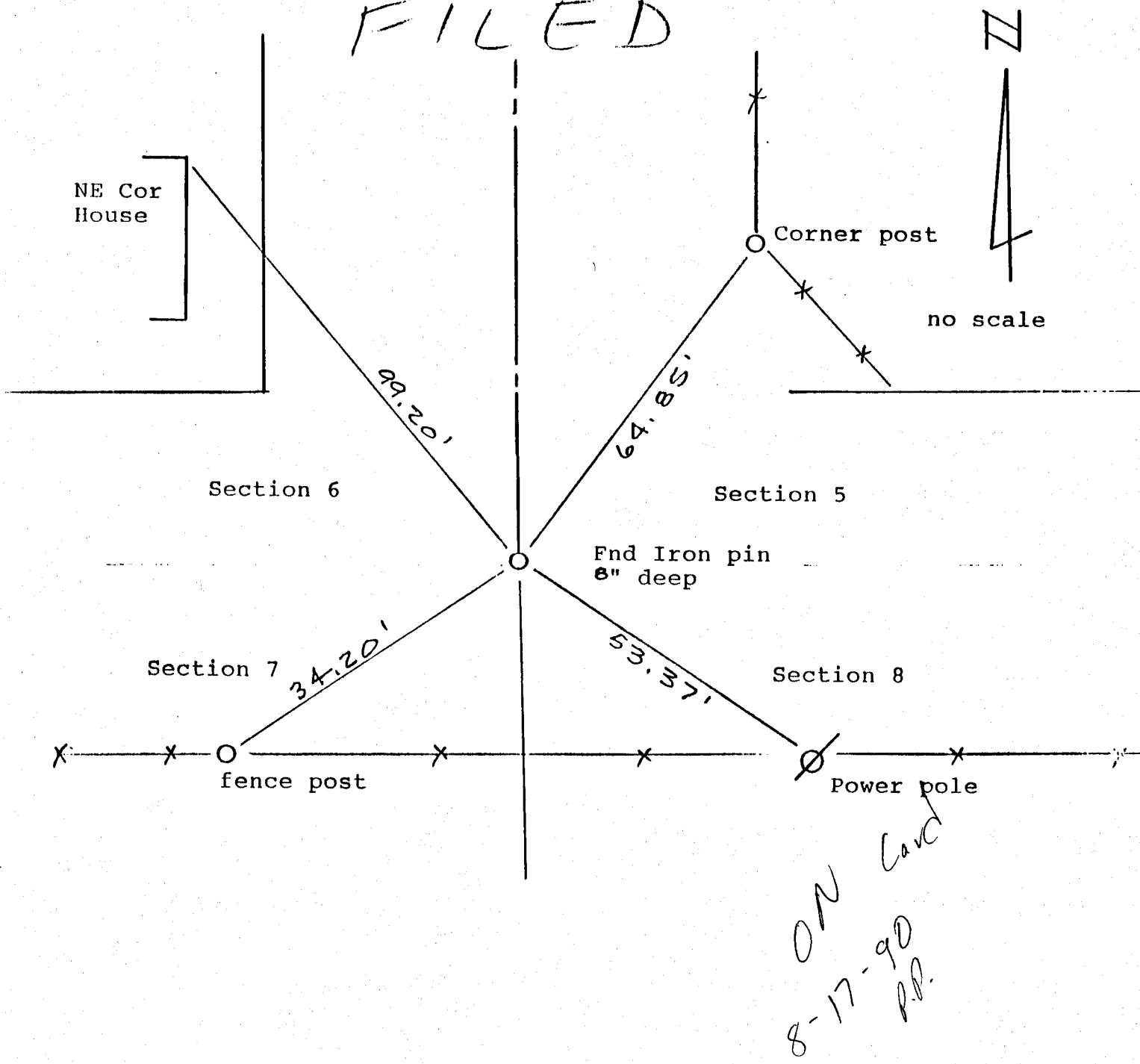
**ALL TIES ARE ENGLISH UNLESS OTHERWISE NOTED**

LAND CORNER SURVEY CERTIFICATE

Wayne  
~~185~~ NE sec 7

SECTION CORNER COMMON TO SECTIONS 5, 6, 7 and 8, TOWNSHIP 85 NORTH, RANGE 3 WEST, JONES COUNTY, IOWA.

FILED



Recovered from ties from County Engineer's office.

Reason for filing: Initial filing

CERTIFICATION

I hereby certify that this plat and survey was made by me or under my direct personal supervision and that I am a duly Registered Land Surveyor under the laws of the State of Iowa.

*Harold E. Dillon*  
Harold E. Dillon Reg# 6581 7/27/90

85307e 072790



JONES COUNTY, IOWA  
 U.S. PUBLIC LAND SURVEY CORNER CERTIFICATE  
 Sec. 8 T 85 N R 3 W  
 Northwest (NW) Corner

*Wayne  
NE Sec. 7*

1. TYPE OF MONUMENT  
 (check one)

- Section Corner     Bench Mark  
 Quarter Corner     Other \_\_\_\_\_

2. REASON FOR PREPARATION OF  
 CERTIFICATE

- There is no certificate for the corner on file with the County Recorder.  
 The corner position differs from that shown in the public records of the county.  
 The corner monument has been replaced or modified.  
 The reference ties referred to in an existing public record are not correct.

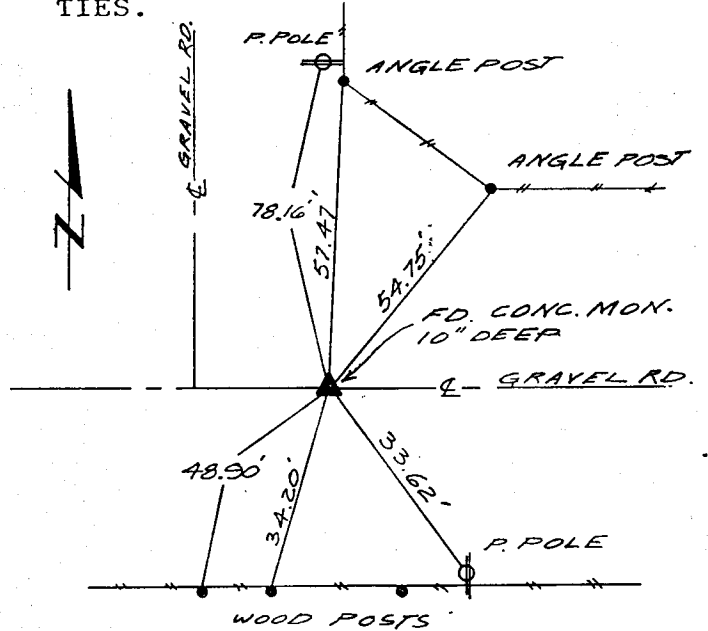
3. DESCRIPTION OF EVIDENCE FOUND AND  
 DETAILED PROCEDURES USED IN  
 ESTABLISHING THE CORNER POSITION.

Concrete monument and ties found at corner per IDOT ties as shown in plan-view. Also found concrete monument at N 1/4 corner of Section 8 and iron rod at W 1/4 corner of Section 8 which check with IDOT corner survey data.

4. DESCRIPTION OF MONUMENT AND/OR  
 ACCESSORIES TO PERPETUATE THE  
 LOCATION OF THIS POINT.

Found concrete monument 10 inches deep at corner. See plan-view for found accessories.

5. PLAN-VIEW SITE DRAWING SHOWING  
 RELATIVE LOCATION OF MONUMENT,  
 PHYSICAL SURROUNDINGS AND REFERENCE  
 TIES.



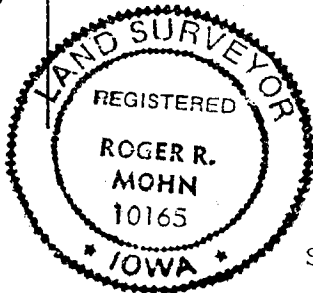
(ALL REFERENCES ARE "X" NAILS)

DATE OF FIELD WORK April 14, 1990

I hereby certify that this plat, map, survey or report was made by me or under my direct personal supervision, and that I am a duly Registered Land Surveyor under the laws of the state of Iowa.

Roger R. Mohn  
 Roger R. Mohn

Date July 11, 1990 Reg. No. 10165



*ON Land  
8-17-90  
P.P.*

*95307e-071190*