

2005 1463

FILED
RECORDERS OFFICE
JONES COUNTY IOWA

05 APR 28 AM 11:25

MARIE KRUTZFIELD

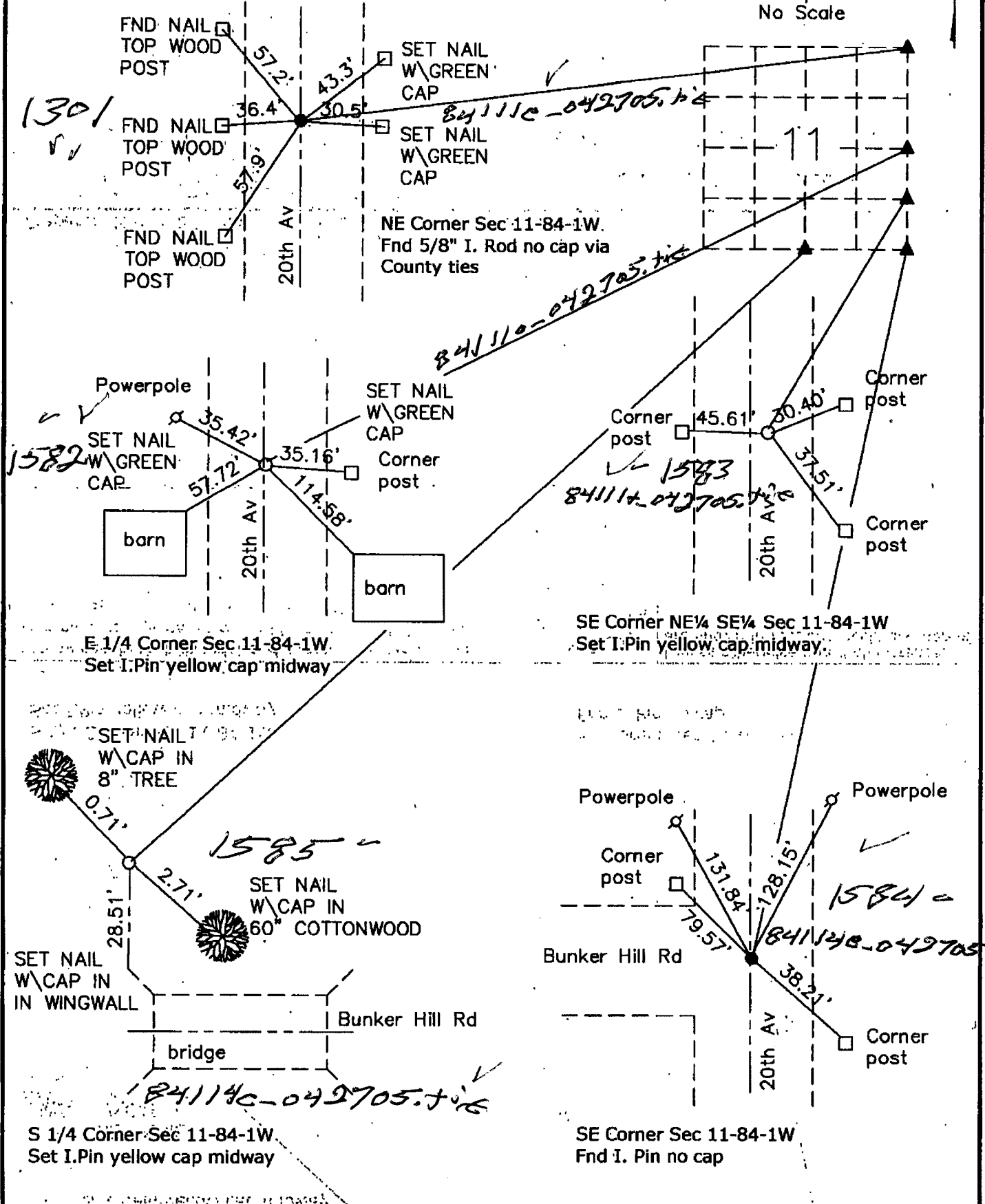
RECORDER 7.00 Pd

Preparer: Harold E Dillon, Coralville, Iowa 52241 319 351 5647

United States Public Land Survey Corner Certificate

Land Survey corner in Section 11 Township 84 North, Range 1 West of the 5th P.M. Jones County, Iowa

No Scale



I hereby certify that this plat and survey was made by me or under my direct supervision and that I am a duly Licensed Land Surveyor under the laws of the State of Iowa.

Harold E Dillon 4-27-05
Harold E. Dillon #6581 My license expires 12/31/2006



Unless otherwise noted all distances are shown in feet and decimals thereof.

Surveyed 4/25/05
Page 1 of 1 Job# 2005.005

THIS IS NOT A CERTIFICATION

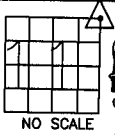
JONES COUNTY ENGINEER'S OFFICE, 19501 HWY. 64, ANAMOSA, IOWA, 52205 (319)462-3785

UNITED STATES PUBLIC LAND SURVEY CORNER CERTIFICATE

LAND SURVEY MONUMENTS SITUATED IN SECTION 11, TOWNSHIP 84
NORTH, RANGE 1 WEST OF THE 5TH P.M., JONES COUNTY, IOWA

CORNERS TO BE INDEXED

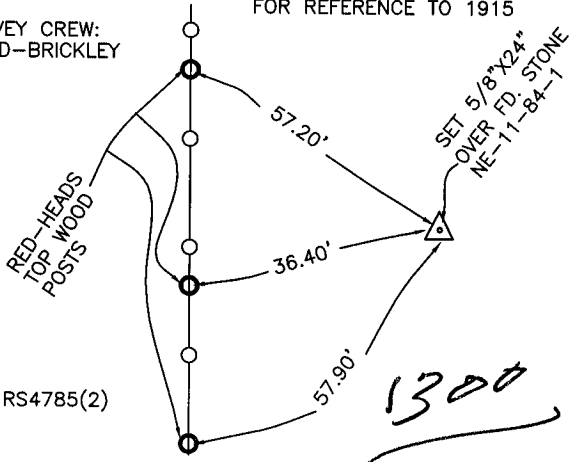
CORNER SECTION TOWNSHIP RANGE
NORTHEAST 11 84N 1W
OFFICE FILE NO.



NOTE:
SEE 2ND INDEX CARD
FOR REFERENCE TO 1915

84111e_011204.jpg

COUNTY SURVEY CREW:
POWELL-WOOD-BRICKLEY
11-25-86

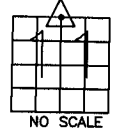


PROJ. NO. RS4785(2)

PREVIOUSLY RECORDED IN BOOK _____, PAGE _____
MONUMENT DESCRIPTION AND HOW ESTABLISHED FOUND
5"X14"X5" LIMESTONE. SET 5/8"X24" IRON PIN ABOVE. NORTHEAST
CORNER OF SECTION 11, TOWNSHIP 84 NORTH, RANGE 1 WEST OF THE
5TH PRINCIPAL MERIDIAN, JONES COUNTY, IOWA.
SET REFERENCE TIES AS INDICATED.

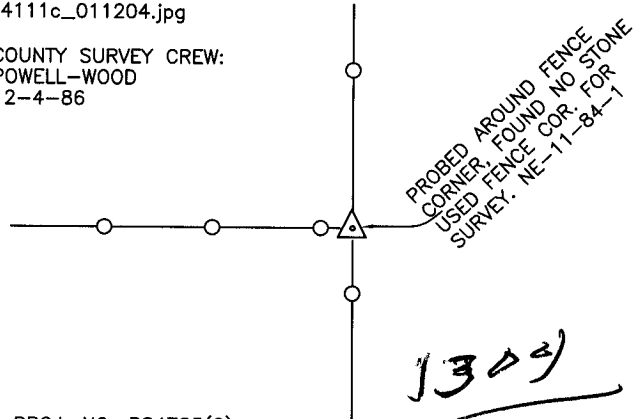
CORNERS TO BE INDEXED

CORNER SECTION TOWNSHIP RANGE
N-QUARTER 11 84N 1W
OFFICE FILE NO.



84111c_011204.jpg

COUNTY SURVEY CREW:
POWELL-WOOD
12-4-86

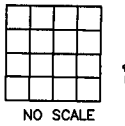


PROJ. NO. RS4785(2)

PREVIOUSLY RECORDED IN BOOK _____, PAGE _____
MONUMENT DESCRIPTION AND HOW ESTABLISHED NO
MONUMENT SET. USED FENCE POST FOR SURVEY. NORTH QUARTER
CORNER SECTION 11, TOWNSHIP 84 NORTH, RANGE 1 WEST OF THE
5TH PRINCIPAL MERIDIAN, JONES COUNTY, IOWA.
NO REFERENCE POINTS SET.

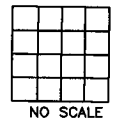
CORNERS TO BE INDEXED

CORNER SECTION TOWNSHIP RANGE
OFFICE FILE NO.



CORNERS TO BE INDEXED

CORNER SECTION TOWNSHIP RANGE
OFFICE FILE NO.



PREVIOUSLY RECORDED IN BOOK _____, PAGE _____
MONUMENT DESCRIPTION AND HOW ESTABLISHED _____

PREVIOUSLY RECORDED IN BOOK _____, PAGE _____
MONUMENT DESCRIPTION AND HOW ESTABLISHED _____

~~I hereby declare that this plat, survey or report was made by me or under my direct personal supervision and that I am a duly registered Land Surveyor under the laws of the State of Iowa.~~

Signed: _____

SEAL

JONES COUNTY
ENGINEER'S OFFICE

19501 HWY. 64,
ANAMOSA, IOWA,
52205 (319)462-3785