

THIS IS NOT A CERTIFICATION

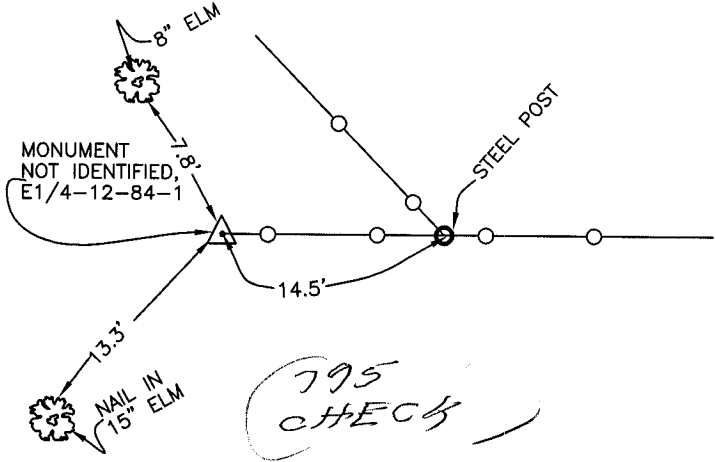
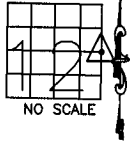
JONES COUNTY ENGINEER'S OFFICE, 19501 HWY. 64, ANAMOSA, IOWA, 52205 (319)462-3785

UNITED STATES PUBLIC LAND SURVEY CORNER CERTIFICATE

LAND SURVEY MONUMENTS SITUATED IN SECTION 12, TOWNSHIP 84
NORTH, RANGE 1 WEST OF THE 5TH P.M., JONES COUNTY, IOWA

CORNERS TO BE INDEXED

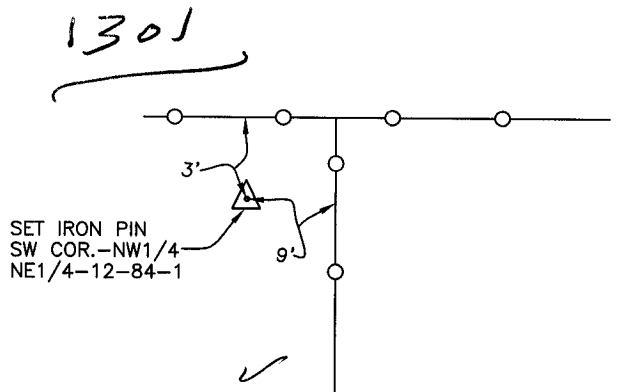
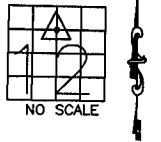
CORNER SECTION TOWNSHIP RANGE
E-QUARTER 12 84N 1W
OFFICE FILE NO.
84112o_011204.jpg
INFORMATION PROVIDED BY: HAROLD DILLON.
NOT DATED



PREVIOUSLY RECORDED IN BOOK _____, PAGE _____
MONUMENT DESCRIPTION AND HOW ESTABLISHED _____
TYPE OF MONUMENT AND DATE NOT SHOWN ON INDEX CARD SKETCH.
TIES ARE AS INDICATED. EAST QUARTER CORNER OF SECTION 12,
TOWNSHIP 84 NORTH, RANGE 1 WEST OF THE 5TH PRINCIPAL,
JONES COUNTY, IOWA.

CORNERS TO BE INDEXED

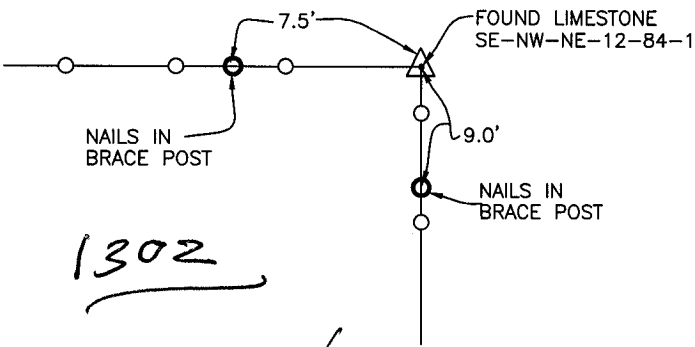
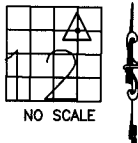
CORNER SECTION TOWNSHIP RANGE
SW-NW-NE 12 84N 1W
OFFICE FILE NO.
84112h_011204.jpg
INFORMATION PROVIDED BY: HAROLD DILLON.
6-18-86



PREVIOUSLY RECORDED IN BOOK _____, PAGE _____
MONUMENT DESCRIPTION AND HOW ESTABLISHED SET
IRON PIN AS INDICATED. SOUTHWEST CORNER, NORTHWEST QUARTER,
NORTHEAST QUARTER, SECTION 12, TOWNSHIP 84 NORTH, RANGE 1
WEST OF THE 5TH PRINCIPAL MERIDIAN, JONES COUNTY, IOWA.
TIES AS INDICATED.

CORNERS TO BE INDEXED

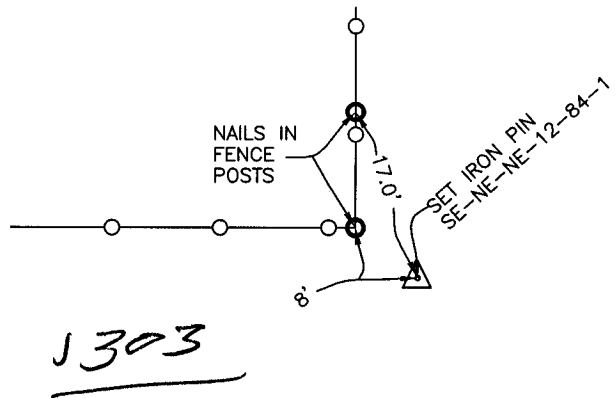
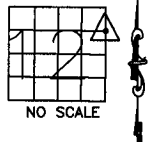
CORNER SECTION TOWNSHIP RANGE
SE-NW-NE 12 84N 1W
OFFICE FILE NO.
84112i_011204.jpg
INFORMATION PROVIDED BY: HAROLD DILLON.
6-18-86



PREVIOUSLY RECORDED IN BOOK _____, PAGE _____
MONUMENT DESCRIPTION AND HOW ESTABLISHED FOUND
LIMESTONE. SOUTHEAST CORNER OF THE NORTHWEST QUARTER OF THE
NORTHEAST QUARTER OF SECTION 12, TOWNSHIP 84 NORTH, RANGE
1 WEST OF THE 5TH PRINCIPAL, JONES COUNTY, IOWA.
REFERENCE POINTS TIED AS INDICATED.

CORNERS TO BE INDEXED

CORNER SECTION TOWNSHIP RANGE
SE-NE-NE 12 84N 1W
OFFICE FILE NO.
84112j_011204.jpg
INFORMATION PROVIDED BY: HAROLD DILLON.
6-18-86



PREVIOUSLY RECORDED IN BOOK _____, PAGE _____
MONUMENT DESCRIPTION AND HOW ESTABLISHED SET
IRON PIN. SOUTHEAST CORNER OF THE NORTHWEST QUARTER OF
THE NORTHEAST QUARTER OF SECTION 12, TOWNSHIP 84 NORTH,
RANGE 1 WEST OF THE 5TH PRINCIPAL MERIDIAN, JONES COUNTY,
IOWA. SET REFERENCE POINTS AS INDICATED.

~~I hereby declare that this plat, survey or report was made by me or under my direct personal supervision and that I am a duly registered Land Surveyor under the laws of the State of Iowa.~~

Signed: _____

SEAL

JONES COUNTY
ENGINEER'S OFFICE

19501 HWY. 64,
ANAMOSA, IOWA,
52205 (319)462-3785