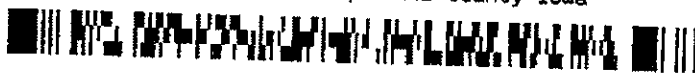


Instrument #: 2015-1080
 04/22/2015 09:38:53 AM Total Pages: 1
 ZSC SECTION CORNER CERTIFICATE
 Recording Fee: \$7.00 Transfer Tax: \$0
 Marie Krutzfield, Recorder, Jones County Iowa



Prepared by: SCHNEIDER Land Surveying and Planning, Inc. P.O. Box 128 Farley, Iowa 52046 563-744-3631

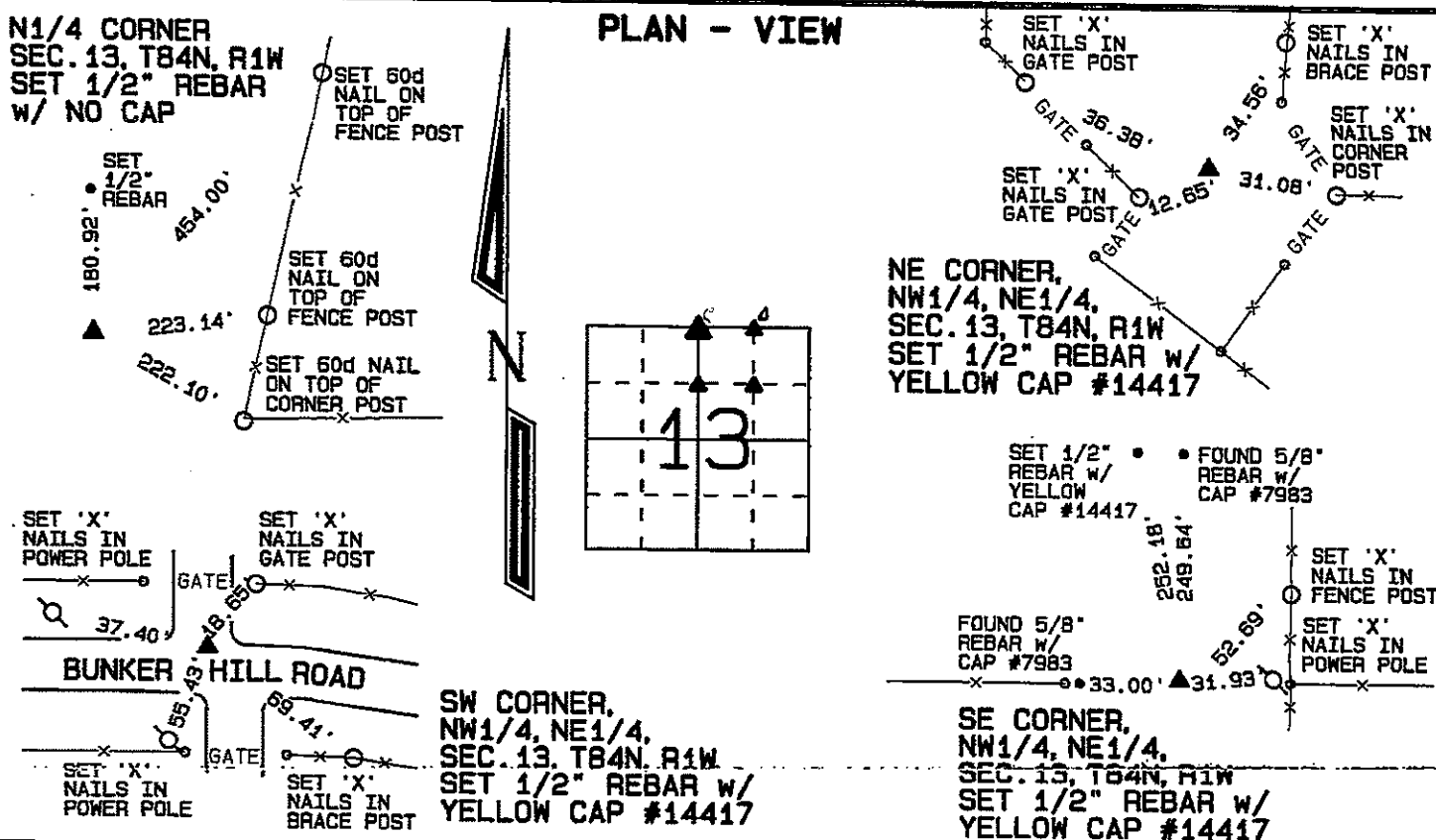
UNITED STATES PUBLIC LAND SURVEY CORNER CERTIFICATE OF

Land Survey Monuments situated in Section 13, Township 84 North, Range 1 West of the Fifth Principal Meridian, Jones County, Iowa.

Previously recorded (NONE OF RECORD)

(BOOK, PAGE / INSTR. NO. / CABINET, SLIDE)

Monument Description and Remarks: THE NORTH/SOUTH POSITION OF THE N1/4 CORNER OF SECTION 13, T84N, R1W WAS ESTABLISHED BY PROJECTING A LINE FROM THE NW CORNER OF SAID SECTION 13 (CORNER CERT. INST. NO. 2005-1463) THROUGH AN OCCUPATION FENCE TO THE EAST. THE EAST/WEST POSITION OF SAID N1/4 CORNER WAS ESTABLISHED BY PROJECTING A LINE FROM THE S1/4 CORNER THROUGH THE SW CORNER OF THE NW1/4 OF THE NE1/4 OF SAID SECTION 13. THE NE CORNER OF THE NW1/4 OF THE NE1/4 WAS ESTABLISHED ON THE NORTH LINE OF SECTION 13 AS OCCUPIED AND BY DOUBLING THE LENGTH OF THE NORTH LINE OF THE NW1/4 OF THE NW1/4 OF THE NE1/4 OF SAID SECTION 13. THE SW CORNER OF THE NW1/4 OF THE NE1/4 OF SECTION 13, T84N, R1W WAS ESTABLISHED BY DOUBLING OVER THE BEARING AND DISTANCE FROM THE NW CORNER OF THE SW1/4 OF THE NW1/4 TO THE NE CORNER OF THE SW1/4 OF THE NW1/4 OF SAID SECTION 13. THE SE CORNER OF THE NW1/4 OF THE NE1/4 WAS ESTABLISHED 33.00 FEET EAST OF A 5/8" REBAR W/ CAP #7983 AND ON A LINE FROM SAID FOUND MONUMENT TO THE SE CORNER OF THE NE1/4 OF THE NE1/4 AS ILLUSTRATED ON A PLAT OF SURVEY FILED IN BOOK N, PAGE 3.

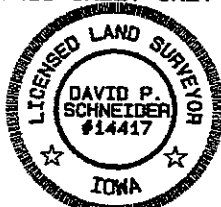


I hereby certify that this land surveying document was prepared and the related survey work was performed by me or under my direct personal supervision and that I am a duly licensed Land Surveyor under the laws of the State of Iowa.

David P. Schneider 4/13/2015
 David P. Schneider P.L.S. #14417 Date:
 My license renewal date is December 31, 2015.

Pages or sheets covered by this seal: THIS SHEET ONLY

SCHNEIDER
 Land Surveying & Planning, Inc.
 P.O. Box 128 Farley, Iowa 52046
 Ph. #563-744-3631 Fax#563-744-3629



List Corners to be Indexed

Corners	Section	Twp	Range
N1/4 CORNER	13	84N	1W
NE CORNER, NW1/4, NE1/4	13	84N	1W
SW CORNER, NW1/4, NE1/4	13	84N	1W
SE CORNER, NW1/4, NE1/4	13	84N	1W