

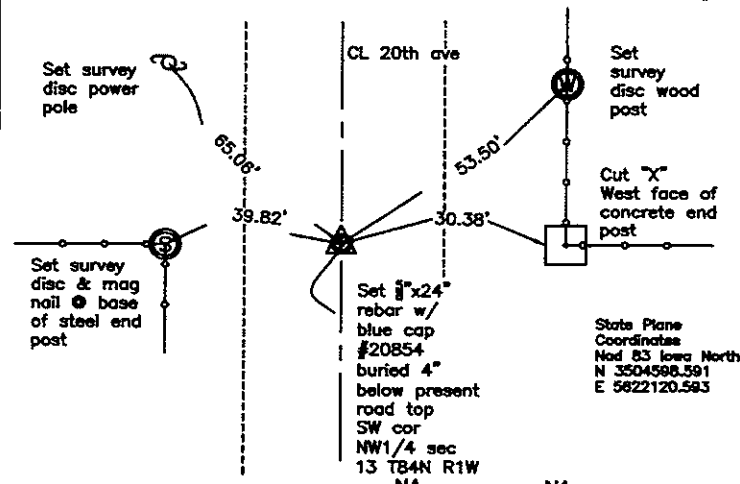
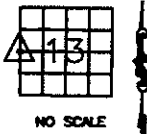
P.E. POWELL, LS 20854, 8991 160th AVE. OLIN, IOWA 52320 (319)-462-4261

UNITED STATES PUBLIC LAND SURVEY CORNER CERTIFICATE

LAND SURVEY MONUMENTS SITUATED IN SECTION 13, TOWNSHIP 84
 NORTH, RANGE 1 WEST OF THE 5TH P.M., JONES COUNTY, IOWA

CORNERS TO BE INDEXED

CORNER	SECTION	TOWNSHIP	RANGE
SW cor NW1/4	13	84N	1W



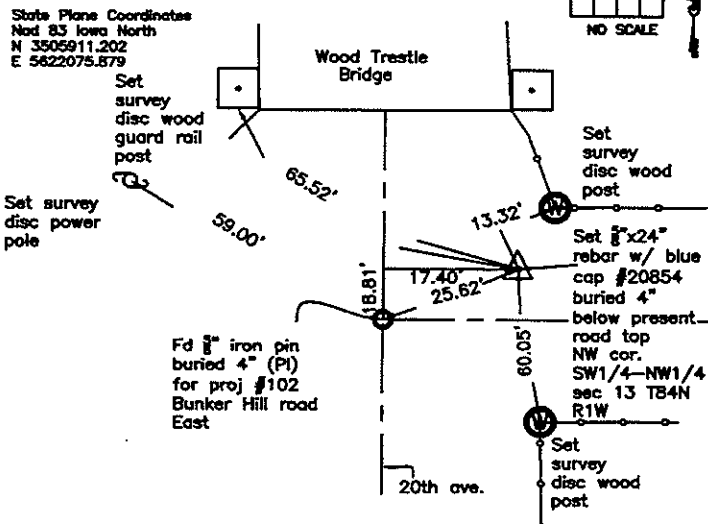
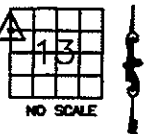
PREVIOUSLY RECORDED IN BOOK NA, PAGE NA
 MONUMENT DESCRIPTION AND HOW ESTABLISHED
 Set $\frac{3}{8}$ "x24" rebar w/blue cap #20854 per physical evidence & road project #102. Field Bk #38(2) at Jones county Engineer's office. Split fences per plan. Ties as indicated for SW cor. NW1/4 section 13 T84N R1W.

Field Notes: Misc. field book - 2012-2013
 Date of field work- 8-25-2013
 Powell

NOTES:
 1) The State Plane Coordinates as shown are for convenience only. The Use as shown should be used to replace the corner, if destroyed.
 2) Coordinates as shown are grid coordinates and based on Jones county G.P.S. control network, which in turn is based on Nad 83 Iowa North datum.
 3) All measurements are in feet and decimals thereof.

CORNERS TO BE INDEXED

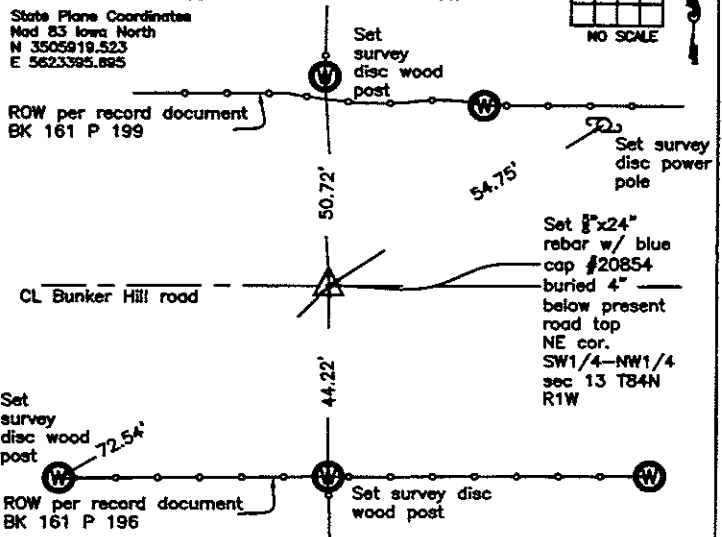
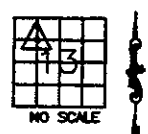
CORNER	SECTION	TOWNSHIP	RANGE
SW cor SW1/4-NW1/4	13	84N	1W



PREVIOUSLY RECORDED IN BOOK NA, PAGE NA
 MONUMENT DESCRIPTION AND HOW ESTABLISHED
 Set $\frac{3}{8}$ "x24" rebar w/blue cap #20854 on line and equidistance from SW cor. of the NW $\frac{1}{4}$ and fd $\frac{1}{2}$ " iron pin (per record document 2005-1463) at the NW cor. sec. 13 T84N R1W. Ties as indicated for NW cor. SW1/4-NW $\frac{1}{4}$ sec 13 T84N R1W.

CORNERS TO BE INDEXED

CORNER	SECTION	TOWNSHIP	RANGE
NE cor. SW1/4-NW1/4	13	84N	1W



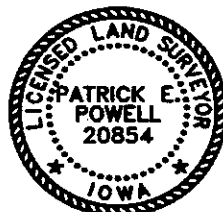
PREVIOUSLY RECORDED IN BOOK NA, PAGE NA
 MONUMENT DESCRIPTION AND HOW ESTABLISHED
 Set $\frac{3}{8}$ "x24" rebar w/blue cap #20854 per physical evidence at North South fence lines, road plans for project #372, & ROW easement documents recorded in Bk 161 Pages 196 & 199 at Jones Co. Recorders office. Ties as indicated for NE cor. SW1/4-NW $\frac{1}{4}$ section 13 T84N R1W.

I hereby declare that this plat, survey or report was made by me or under my direct personal supervision and that I am a duly registered Land Surveyor under the laws of the State of Iowa.

Signed: *Patrick E. Powell* 8-27-2013

Patrick E. Powell L.S. #20854
 My Registration Renewal Date is December 31, 2013

SEAL



Patrick E. Powell
 LS #20854
 8991 160th ave
 Olin, Iowa, 52320
 (319) 462-4261