

FEEBOOK: 2008 0781

REC FEES: \$7.00

PAGES: 1

3/18/2008 11:47 AM

Marie Krutzfield, Recorder
Jones County, Iowa

PREPARED BY: MICHAEL J. WEBER, WEBER SURVEYING, LLC, 26789 46TH AVE, BERNARD, IA 52032 (563) 879-4173

UNITED STATES PUBLIC LAND SURVEY CORNER CERTIFICATE OF

LAND SURVEY MONUMENTS SITUATED IN SECTION 14, TOWNSHIP 84 NORTH, RANGE 1 WEST
OF THE FIFTH PRINCIPAL MERIDIAN, JONES COUNTY, IOWA.
PREVIOUSLY RECORDED NONE UNLESS OTHERWISE NOTED

(book, page, document number, etc)

(Show reason for preparing this certificate, the evidence and detailed procedures used in establishing the corner positions and monumentation found or placed.)

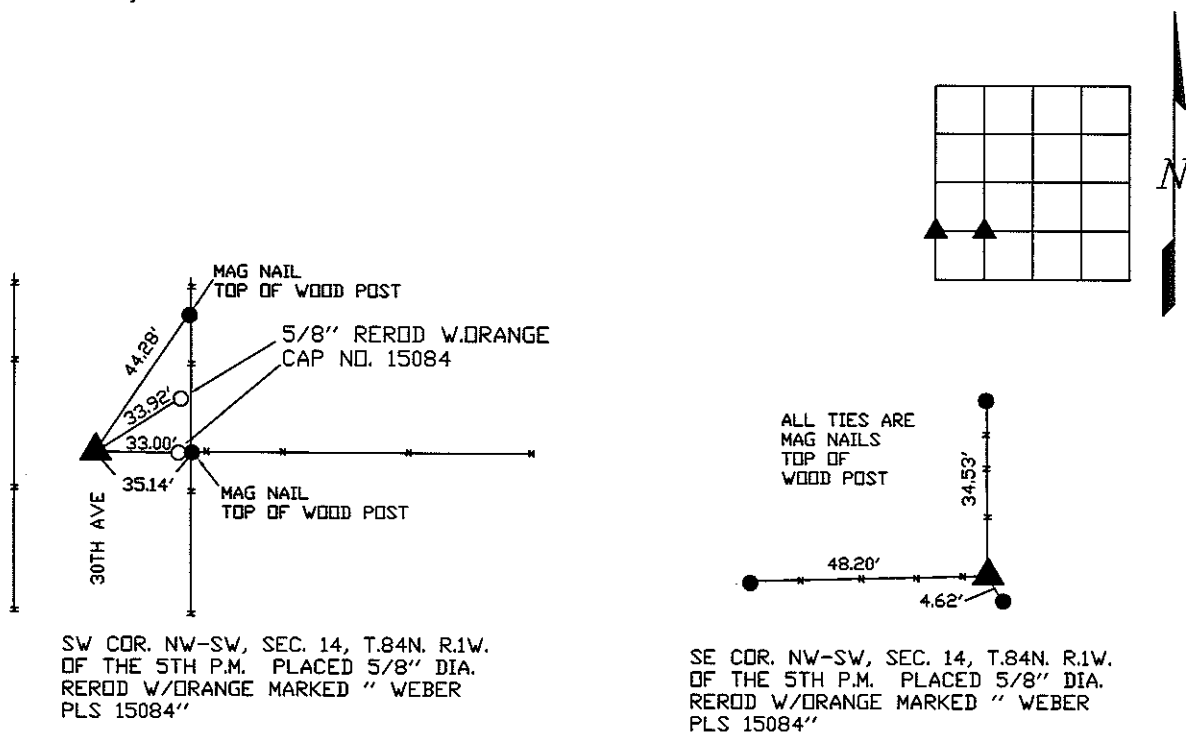
Monument Description and Remarks:

- SW COR. NW-SW, SEC. 14, T.84N. R.1W. OF THE 5TH P.M. PLACED 5/8" DIA. REROD W/ORANGE MARKED "WEBER PLS 15084" - ESTABLISHED CORNER AT THE INTERSECTION OF THE CENTER OF 30TH AVE RIGHT OF WAY AND THE FENCELINE TO THE EAST

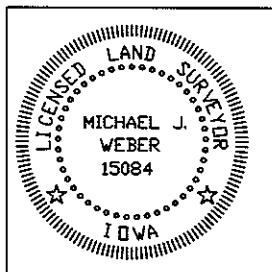
- SE COR. NW-SW, SEC. 14, T.84N. R.1W. OF THE 5TH P.M. PLACED 5/8" DIA. REROD W/ORANGE MARKED "WEBER PLS 15084" - ESTABLISHED CORNER AT THE INTERSECTION OF THE FENCE CORNER RUNNING WEST AND NORTH

PLAN - VIEW

(Show a minimum of three reference ties to durable physical objects, relevant monuments and physical conditions that will enable recovery of the corner.)



DWG. NO. NOLAN



I HEREBY CERTIFY THAT THIS LAND SURVEYING DOCUMENT WAS PREPARED AND THE RELATED SURVEY WORK WAS PERFORMED BY ME OR UNDER MY DIRECT PERSONAL SUPERVISION AND THAT I AM A DULY LICENSED LAND SURVEYOR UNDER THE LAWS OF THE STATE OF IOWA.

Michael J. Weber *March 18, 2008*
MICHAEL J. WEBER (DATE)

LICENSE NUMBER 15084

MY LICENSE RENEWAL DATE IS DECEMBER 31, 2009

SHEETS COVERED BY THIS SEAL 1 THIS SHEET ONLY

List Corners to be Indexed		
Corner	Sec	Twp Range
SW COR. NW-SW	14	84N 1W
SE COR. NW-SW	14	84N 1W