

□□  
 Jones County Marie Krutzfield  
 Fee Book 2011 0917  
 04/07/2011 @0931AM # Pages 1  
 ZSC SEC COR CERT  
 Total Fees: \$0.00

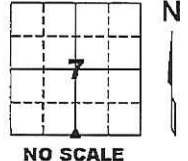
PREPARED BY  
 CLARENCE J. WALTON, JONES COUNTY ENGINEER'S OFFICE, 19501 HWY. 64, ANAMOSA, IOWA, 52205 (319) 462-3785

# UNITED STATES PUBLIC LAND SURVEY CORNER CERTIFICATE

LAND SURVEY MONUMENTS SITUATED IN SECTION 7, TOWNSHIP 84 NORTH,  
 RANGE 1 WEST OF THE 5TH PRINCIPAL MERIDIAN, JONES COUNTY, IOWA.

S 1/4 CORNER SECTION 7-T84N-R1W  
 STATE PLANE COORDINATE (NAD 83 IOWA NORTH)  
 N 3506560.16  
 E 5598257.66

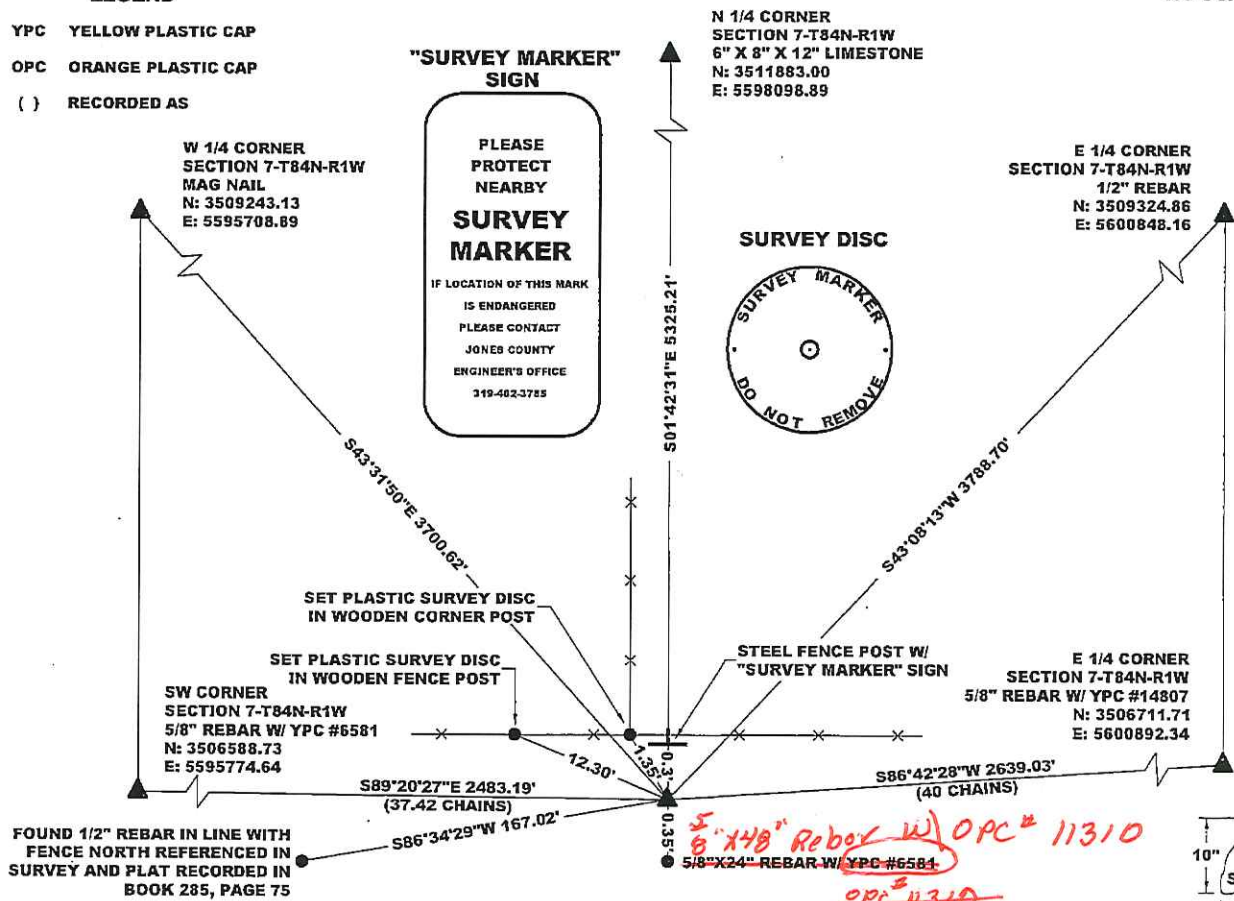
CORNER SECTION TOWNSHIP RANGE  
 S 1/4 7 T84N R1W



NOTE:  
 THE STATE PLANE COORDINATE AS INDICATED IS FOR CONVENIENCE ONLY. THE TIES  
 AS SHOWN SHOULD BE USED TO REPLACE THE CORNER, IF DESTROYED

**LEGEND**

- YPC YELLOW PLASTIC CAP
- OPC ORANGE PLASTIC CAP
- ( ) RECORDED AS



PREVIOUSLY RECORDED N/A

**MONUMENT DESCRIPTION AND HOW ESTABLISHED** FOUND POINTED 9"X10"X3-1/2" LIMESTONE STANDING UPRIGHT, 3" BELOW PRESENT GROUND SURFACE. EXTENSIVE BULLDOZING OF GROUND ALL AROUND THE FIELD REVEALED NO OTHER STONES, JUST SOIL. PROPORTIONATE MEASUREMENT BETWEEN THIS STONE AND FOUND SW CORNER OF SECTION 7 COMES TO ±10' OF EXISTING OLD FENCE RUNNING SOUTH REPRESENTING THE EAST LINE OF THE SW FRACTIONAL 1/4 SW 1/4 OF SECTION 7. USING THE 1/2" REBAR 167.02' W-LY OF THE STONE, THE PROPORTIONATE MEASUREMENT PUTS SAID EAST LINE ±68' WEST OF THE OLD FENCE LINE. BREAKDOWN OF NORTH 1/2 OF SECTION ALSO SHOWS A CLOSE MATCH WITH AN EXISTING FENCE ON THE EAST OF THE NW 1/4 NE 1/4 OF SECTION 7. IT IS IMPORTANT TO NOTE THAT THERE IS AN EXISTING FENCE RUNNING INTERMITTENTLY FROM THE 1/2" REBAR TO THE NORTH TO A FENCE LINE THAT BORDERS A SEWAGE LAGOON. I AM OF THE OPINION THAT THE STONE WAS SET TO REPRESENT THE S 1/4 OF SECTION 7. ALSO, THERE IS NO SURVEY RECORD THAT SHOWS EVIDENCE OF A "PEDIGREE" TO EITHER THE 1/2" REBAR OR THE STONE. A STEEL FENCE POST WAS SET WITH A "SURVEY MARKER" SIGN AS A WITNESS TO THE STONE AND A 5/8" X 24" REBAR W/ AN ORANGE PLASTIC CAP WAS SET SOUTH OF THE STONE TO PROTECT THE STONE AND FOR DETECTION PURPOSES. ALL LONG DISTANCES SHOWN ARE GRID DISTANCES.

MISC. FIELD BOOK 2009-2010, PAGE 136. DATE OF SURVEY: 3/21/11



I hereby certify that this land surveying document and the related survey work was performed by me or under my direct personal supervision and that I am a duly registered Land Surveyor under the laws of the State of Iowa.  
 Signed: *Clarence J. Walton* 4/7/11  
 Clarence J. Walton, L.S.  
 My Registration Renewal Date is December 31, 2011  
 Iowa License Number 11310  
 Pages or sheets covered by this seal: 1 of 1

- A. THERE IS NO CERTIFICATE FOR THE CORNER ON FILE WITH THE RECORDER OF THE COUNTY IN WHICH THE CORNER IS LOCATED.
- B. THE CORNER MONUMENT HAS BEEN REPLACED OR MODIFIED.
- C. THE SURVEYOR IN RESPONSIBLE CHARGE OF THE LAND SURVEYING ACCEPTS A CORNER POSITION THAT DIFFERS FROM THAT SHOWN IN THE PUBLIC RECORDS OF THE COUNTY IN WHICH THE CORNER IS LOCATED.
- D. THE REFERENCE TIES REFERRED TO IN AN EXISTING PUBLIC RECORD NO LONGER EXIST.
- E. ADDED TIES TO FACILITATE LOCATING SECTION CORNER MONUMENT.

**CORNERS TO BE INDEXED**

CORNER	SECTION	TOWNSHIP	RANGE
S 1/4	7	84N	1W
N 1/4	18	84N	1W

**JONES COUNTY ENGINEER'S OFFICE**



19501 HWY. 64, ANAMOSA, IOWA 52205  
 (319) 462-3785