

2005 2259

FILED
RECORDERS OFFICE
JONES COUNTY IOWA

05 JUN 29 AM 9:59

MARIE KRUTZFIELD
RECORDER *No Fee*

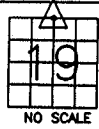
J.D. Tjepkes, LS. JONES COUNTY ENGINEER'S OFFICE, 19501 HWY. 64, ANAMOSA, IOWA, 52205 (319)462-3785

UNITED STATES PUBLIC LAND SURVEY CORNER CERTIFICATE

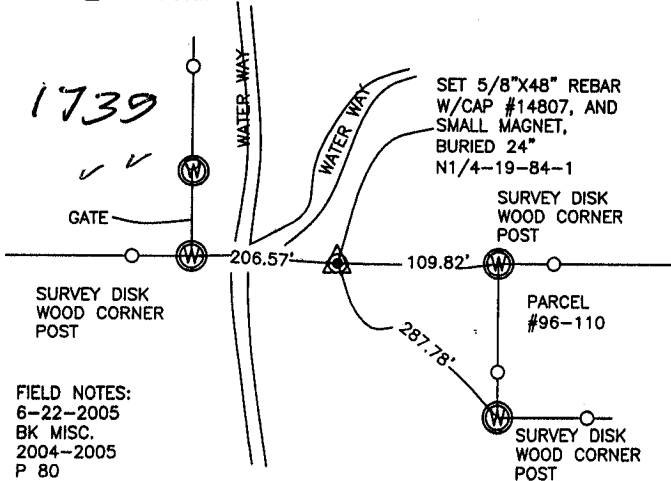
LAND SURVEY MONUMENTS SITUATED IN SECTION 19, TOWNSHIP 84
NORTH, RANGE 1 WEST OF THE 5TH P.M., JONES COUNTY, IOWA

CORNERS TO BE INDEXED

CORNER SECTION TOWNSHIP RANGE
N1/4 19 84N 1W



OFFICE FILE NO.
84119c_062805.tif



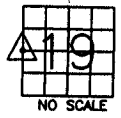
FIELD NOTES:
6-22-2005
BK MISC.
2004-2005
P 80

PREVIOUSLY RECORDED IN BOOK NA, PAGE NA
MONUMENT DESCRIPTION AND HOW ESTABLISHED

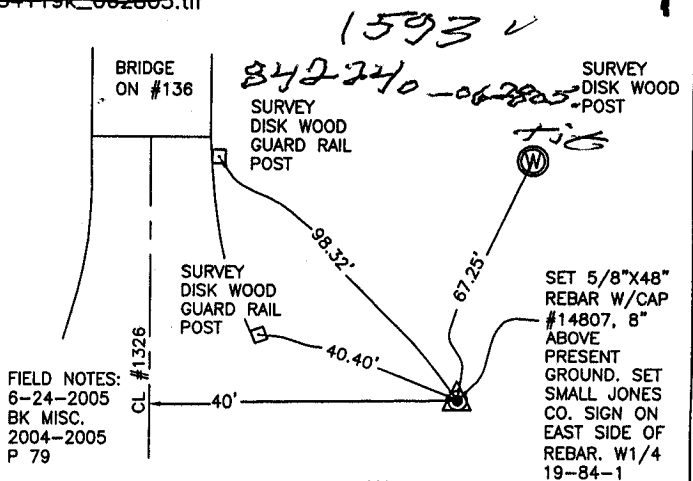
PER PARCEL #96-110, BY LS DILLON (6581) RECORDED IN JONES COUNTY
RECORDER'S OFFICE IN BOOK "M" P 29, RESET 5/8"X48" REBAR W/CAP
#14807 AND MAGNET BURIED 24" IN CULTIVATED FIELD. TIES AS INDICATED
FOR N1/4 SECTION 19 T84N R1W.

CORNERS TO BE INDEXED

CORNER SECTION TOWNSHIP RANGE
W1/4 19 84N 1W



OFFICE FILE NO.
84119k_062805.tif



FIELD NOTES:
6-24-2005
BK MISC.
2004-2005
P 79

PREVIOUSLY RECORDED IN BOOK NA, PAGE NA
MONUMENT DESCRIPTION AND HOW ESTABLISHED

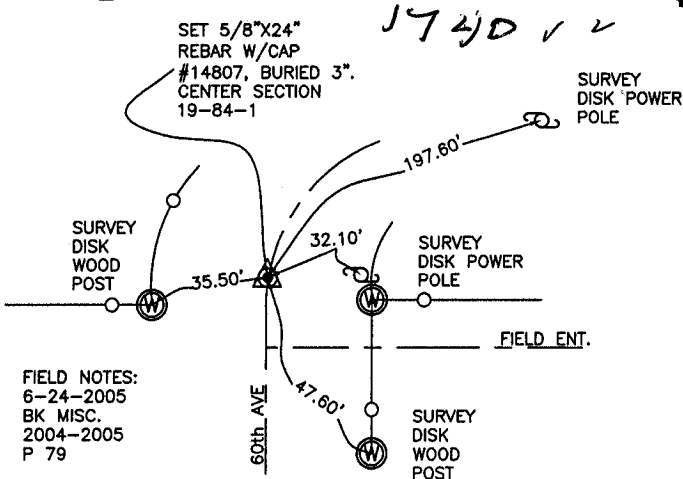
PER TIES ON FILE AT JONES CO. ENGINEER'S OFFICE FROM I.D.O.T. PROJECT
#FN-814 (DATED 1951), FOUND R.R. RAIL BURIED 40" IN FORESLOPE OF
#136. SET 5/8"X48" REBAR W/CAP #14807, 8" ABOVE PRESENT GROUND.
NEW TIES AS INDICATED FOR W1/4 SECTION 19 T84N R1W.

CORNERS TO BE INDEXED

CORNER SECTION TOWNSHIP RANGE
CENTER 19 84N 1W



OFFICE FILE NO.
84119m_062805.tif



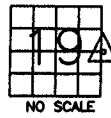
FIELD NOTES:
6-24-2005
BK MISC.
2004-2005
P 79

PREVIOUSLY RECORDED IN BOOK NA, PAGE NA
MONUMENT DESCRIPTION AND HOW ESTABLISHED

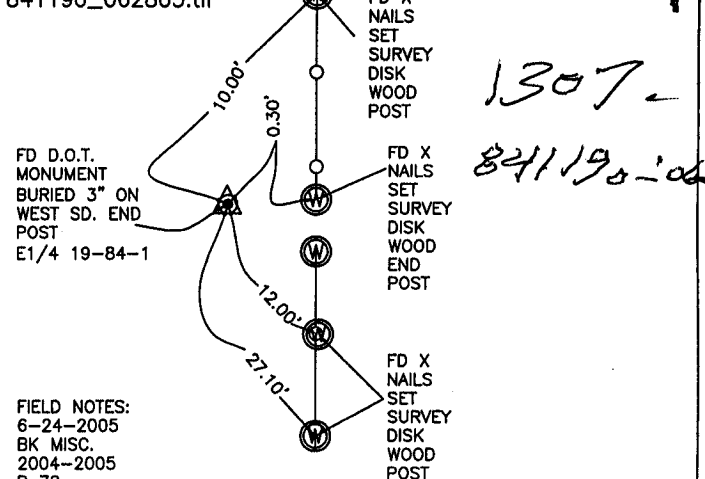
SET 5/8"X24" REBAR, BURIED 3", ON EAST-WEST CENTER LINE
SECTION 19 AND CENTERLINE ROAD SPLIT NORTH-SOUTH PER
ROAD RECORD. TIES AS INDICATED FOR CENTER SECTION 19
T84N R1W.

CORNERS TO BE INDEXED

CORNER SECTION TOWNSHIP RANGE
E1/4 19 84N 1W



OFFICE FILE NO.
84119o_062805.tif



FIELD NOTES:
6-24-2005
BK MISC.
2004-2005
P 78

PREVIOUSLY RECORDED IN BOOK NA, PAGE NA
MONUMENT DESCRIPTION AND HOW ESTABLISHED

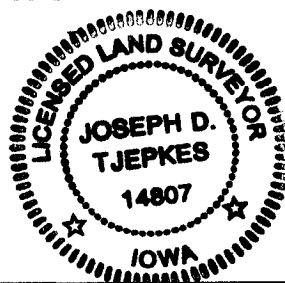
PER OLD TIES ON FILE AT JONES COUNTY ENGINEER'S OFFICE, FROM I.D.O.T.
PROJECT # F-64(8)--20-53, FOUND DOT MONUMENT BURIED 3" ON WEST
SIDE OF END POST. TIES AS INDICATED FOR E1/4 SECTION 19 T84N R1W.

I hereby declare that this plat, survey or report
was made by me or under my direct personal
supervision and that I am a duly registered Land
Surveyor under the laws of the State of Iowa.

Signed: *[Signature]* 6.28.05

Joseph D. Tjepkes L.S. Iowa Reg. No. 14807
My Registration Renewal Date is December 31, 2006

SEAL



J.D. Tjepkes LS 14807
JONES COUNTY
ENGINEER'S OFFICE

19501 HWY. 64,
ANAMOSA, IOWA,
52205 (319)462-3785