

Jones County Marie Krutzfield Recorder
 Fee Book 2013 1992
 07/31/2013 @1243PM # Pages 1
 ZSC SEC COR CERT
 Total Fees: \$7.00

Prepared by: SCHNEIDER Land Surveying and Planning, Inc. P.O. Box 128 Farley, Iowa 52046 563-744-3631

UNITED STATES PUBLIC LAND SURVEY CORNER CERTIFICATE OF

Land Survey Monuments situated in Section 1, Township 84 North, Range 1 West of the Fifth Principal Meridian, Jones County, Iowa.
 Previously recorded (NONE OF RECORD)

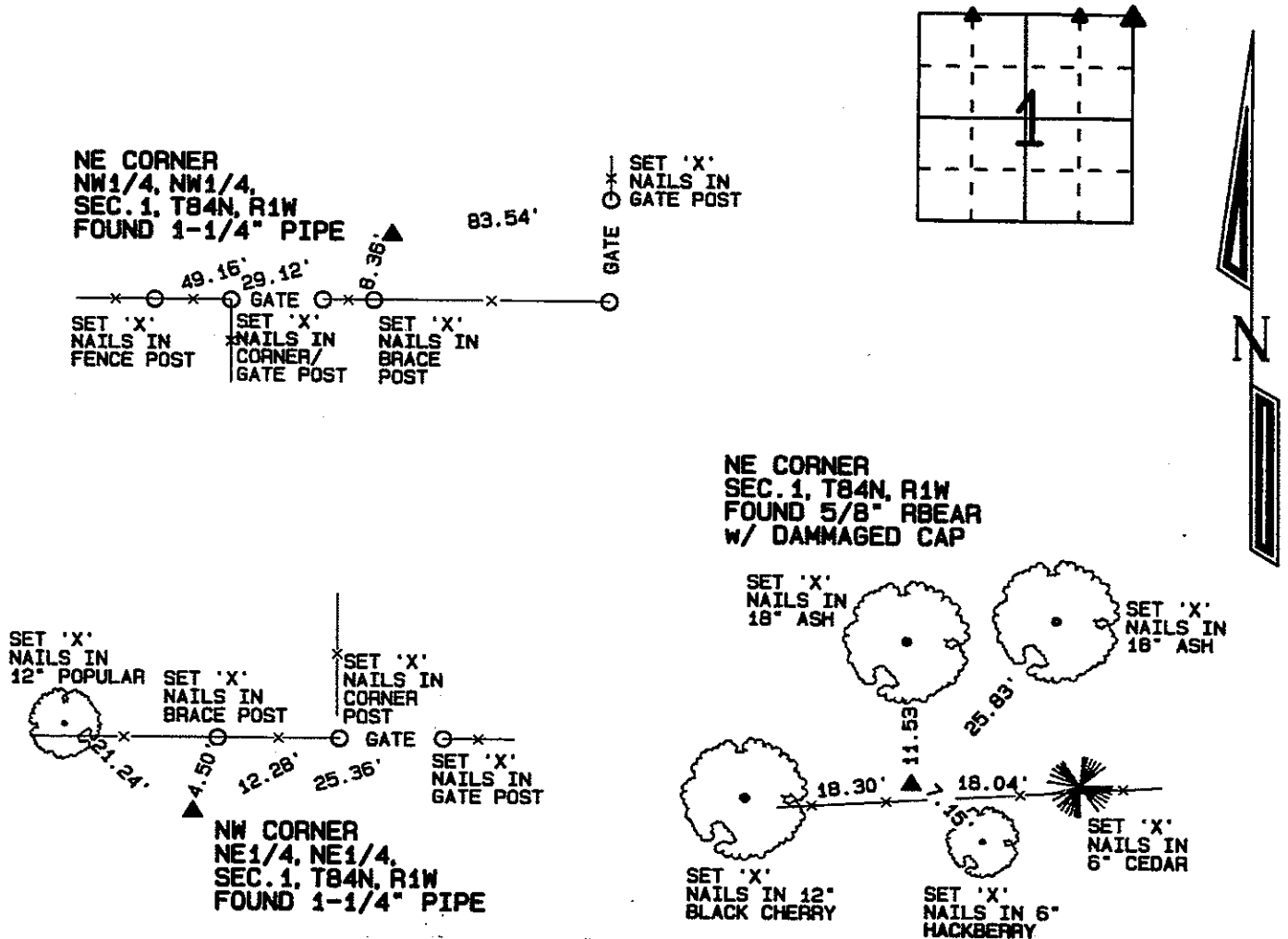
(BOOK, PAGE / INST. NO. / CABINET, SLIDE)

(Show reason for preparing this certificate, the evidence and detailed procedures used in establishing the corner positions and monumentation found or placed.)

Monument Description and Remarks: A 1-1/4" PIPE WAS FOUND AT THE NE CORNER OF THE NW1/4 OF THE NW1/4 OF SECTION 1, T84N, R1W AS ILLUSTRATED ON A PLAT OF SURVEY PREPARED BY T.R. WARRINER AND DATED MAY 1915.
 A 1-1/4" PIPE WAS FOUND AT THE NW CORNER OF THE NE1/4 OF THE NE1/4 OF SECTION 1, T84N, R1W AS ILLUSTRATED ON A PLAT OF SURVEY PREPARED BY T.R. WARRINER AND DATED MAY 1915. A 5/8" REBAR WITH A DAMAGED CAP WAS FOUND NEXT TO AN OLD POST AT THE NE CORNER OF SECTION 1, T84N, R1W.

PLAN - VIEW

(Show a minimum of three reference ties to durable physical objects, relevant monuments and physical conditions that will enable recovery of the corner.)

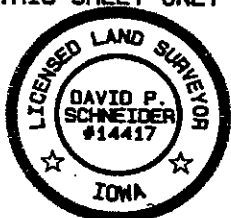


I hereby certify that this land surveying document was prepared and the related survey work was performed by me or under my direct personal supervision and that I am a duly licensed Land Surveyor under the laws of the State of Iowa.

David P. Schneider
 David P. Schneider P.L.S. #14417 Date: 7/30/2013
 My license renewal date is December 31, 2013.

Pages or sheets covered by this seal: THIS SHEET ONLY

SCHNEIDER
 Land Surveying & Planning, Inc.
 P.O. Box 128 Farley, Iowa 52046
 Ph. #563-744-3631 Fax#563-744-3629



List Corners to be Indexed

Corners	Section	Twp	Range
NE CORNER NW1/4, NW1/4	1	84N	1W
NW CORNER NE1/4, NE1/4	1	84N	1W
NE CORNER	1	84N	1W