

Jones County Marie Krutzfield Recorder  
 Fee Book 2013 1991  
 07/31/2013 @1242PM # Pages 1  
 ZSC SEC COR CERT  
 Total Fees: \$7.00

Prepared by: SCHNEIDER Land Surveying and Planning, Inc. P.O. Box 128 Farley, Iowa 52046 563-744-3631

**UNITED STATES PUBLIC LAND SURVEY CORNER CERTIFICATE OF**

Land Survey Monuments situated in Section 36, Township 85 North, Range 1 West of the Fifth Principal Meridian, Jones County, Iowa.  
 Previously recorded (NONE OF RECORD)

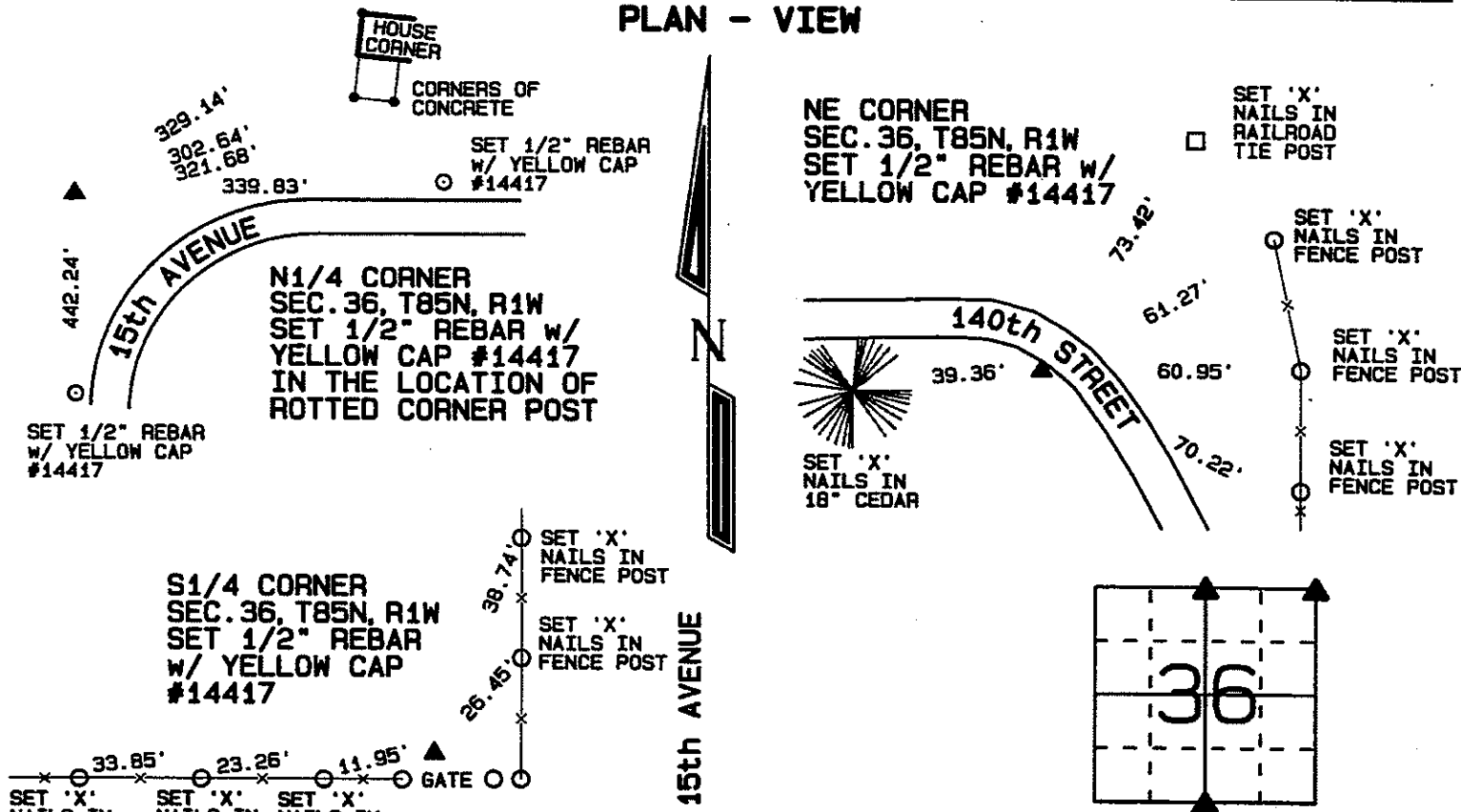
(BOOK, PAGE / DIST. NO. / CABINET, SLIDE)

(Show reason for preparing this certificate, the evidence and detailed procedures used in establishing the corner positions and monumentation found or placed.)

Monument Description and Remarks: THE N1/4 CORNER OF SECTION 36, T85N, R1W WAS ESTABLISHED AT THE LOCATION OF A ROTTED CORNER POST WITH REMNANTS OF BURIED WIRE NORTH, SOUTH AND EAST OF THE CORNER POST.

THE NE CORNER OF SECTION 36, T85N, R1W WAS ESTABLISHED AS DESCRIBED IN A QUIT CLAIM DEED FILED APRIL 6, 2009 AS INST. NO. 2009-1204. THE CORNER IS DESCRIBED AS BEING 210' NORTH OF THE SOUTH LINE AND 350' EAST OF THE NORTHWEST CORNER OF THE 2 ACRE PARCEL. THE POSITION IS WITHIN 4.5 FEET OF A LINE FROM THE MONUMENT AT THE SOUTHWEST CORNER OF SAID SECTION 36 TO THE OCCUPATION FENCE INTERSECTION AT THE E1/4 CORNER OF SECTION 35, T85N, R1W. THE S1/4 CORNER OF SECTION 36, T85N, R1W WAS ESTABLISHED BY EXTENDING A LINE AND DOUBLING THE DISTANCE FROM THE MONUMENT AT THE SOUTHWEST CORNER OF SAID SECTION 36 THROUGH THE MONUMENT AT THE QUARTER-QUARTER CORNER AT THE NW CORNER OF THE NORTHEAST QUARTER OF THE NORTHEAST QUARTER OF SECTION 1, T84N, R1W TO ESTABLISHED THE THEORETICAL N1/4 CORNER OF SAID SECTION 1. THE S1/4 CORNER WAS PLACED 18.48' EAST OF THE N1/4 CORNER OF SAID SECTION 1 AS ILLUSTRATED ON THE PLAT OF SURVEY OF SAID SECTION 1 PREPARED FOR THE DISTRICT COURT OF JONES COUNTY CASE OF LEWIS DOHL ET. vs. ELSPY STREET AND JONES COUNTY BY T.R. WARRINER AND DATED MAY 1915.

**PLAN - VIEW**



I hereby certify that this land surveying document was prepared and the related survey work was performed by me or under my direct personal supervision and that I am a duly licensed Land Surveyor under the laws of the State of Iowa.

*David P. Schneider* 7/30/2013  
 David P. Schneider P.L.S. #14417 Date:  
 My license renewal date is December 31, 2013.

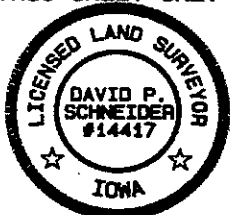
Pages or sheets covered by this seal: THIS SHEET ONLY

List Corners to be Indexed

Corners	Section	Twp	Range
N1/4 CORNER	36	85N	1W
NE CORNER	36	85N	1W
S1/4 CORNER	36	85N	1W

**SCHNEIDER**  
 Land Surveying & Planning, Inc.

P.O. Box 128 Farley, Iowa 52046  
 Ph. #563-744-3631 Fax#563-744-3629



JOB NO. 1741

# THIS IS NOT A CERTIFICATION

JONES COUNTY ENGINEER'S OFFICE, 19501 HWY. 64, ANAMOSA, IOWA, 52205 (319)462-3785

## UNITED STATES PUBLIC LAND SURVEY CORNER CERTIFICATE

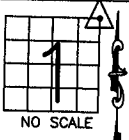
LAND SURVEY MONUMENTS SITUATED IN SECTION 1, TOWNSHIP 84 NORTH, RANGE 1 WEST OF THE 5TH P.M., JONES COUNTY, IOWA

### CORNERS TO BE INDEXED

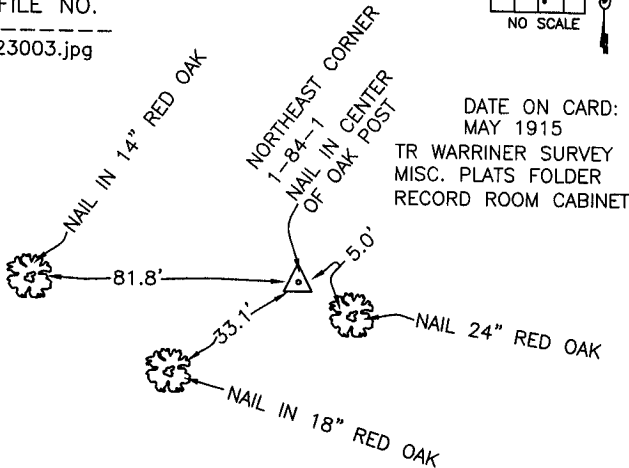
CORNER SECTION TOWNSHIP RANGE  
NORTHEAST 1 84N 1W

OFFICE FILE NO.

84101e\_123003.jpg



NO SCALE



DATE ON CARD:  
MAY 1915

TR WARRINER SURVEY  
MISC. PLATS FOLDER  
RECORD ROOM CABINET

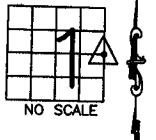
PREVIOUSLY RECORDED IN BOOK \_\_\_\_\_, PAGE \_\_\_\_\_  
MONUMENT DESCRIPTION AND HOW ESTABLISHED THIS  
SKETCH WAS CREATED FROM TIES SHOWN ON THE SMALL INDEX  
CARD. REF: TO SHIVE-HATTERY (EXHIBIT 1) NORTHEAST CORNER  
SECTION 1, TOWNSHIP 84 NORTH, RANGE 1 WEST OF THE 5TH  
PRINCIPAL MERIDIAN, JONES COUNTY, IOWA. NAIL IN CENTER OF OAK  
POST.

### CORNERS TO BE INDEXED

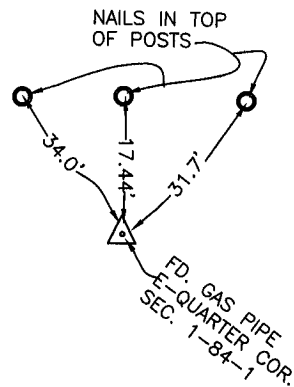
CORNER SECTION TOWNSHIP RANGE  
E-QUARTER 1 84N 1W

OFFICE FILE NO.

84101o\_123003.jpg



NO SCALE



DATE ON CARD:  
MAY 1915

TR WARRINER SURVEY  
MISC. PLATS FOLDER  
RECORD ROOM CABINET

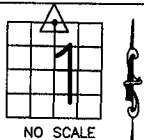
PREVIOUSLY RECORDED IN BOOK \_\_\_\_\_, PAGE \_\_\_\_\_  
MONUMENT DESCRIPTION AND HOW ESTABLISHED THIS  
SKETCH WAS CREATED FROM TIES SHOWN ON THE SMALL INDEX  
CARD. REF: TO SHIVE-HATTERY (EXHIBIT 1) EAST-QUARTER CORNER  
SECTION 1, TOWNSHIP 84 NORTH, RANGE 1 WEST OF THE 5TH  
PRINCIPAL MERIDIAN, JONES COUNTY, IOWA. FOUND GAS PIPE

### CORNERS TO BE INDEXED

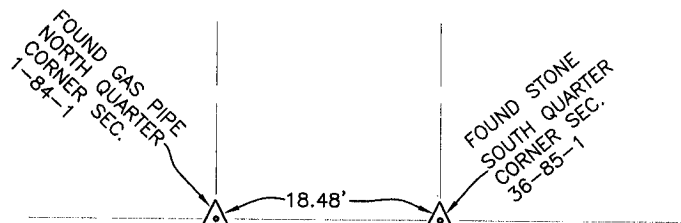
CORNER SECTION TOWNSHIP RANGE  
N-QUARTER 1 84N 1W

OFFICE FILE NO.

84101c\_123003.jpg



NO SCALE



DATE ON CARD:  
MAY 1915

TR WARRINER SURVEY  
MISC. PLATS FOLDER  
RECORD ROOM CABINET

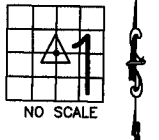
PREVIOUSLY RECORDED IN BOOK \_\_\_\_\_, PAGE \_\_\_\_\_  
MONUMENT DESCRIPTION AND HOW ESTABLISHED THIS  
SKETCH WAS CREATED FROM TIES SHOWN ON THE SMALL INDEX  
CARD. REF: TO SHIVE-HATTERY (EXHIBIT 1) N-QUARTER CORNER  
SECTION 1, TOWNSHIP 84 NORTH, RANGE 1 WEST OF THE 5TH  
PRINCIPAL MERIDIAN, JONES COUNTY, IOWA. (GAS PIPE)

### CORNERS TO BE INDEXED

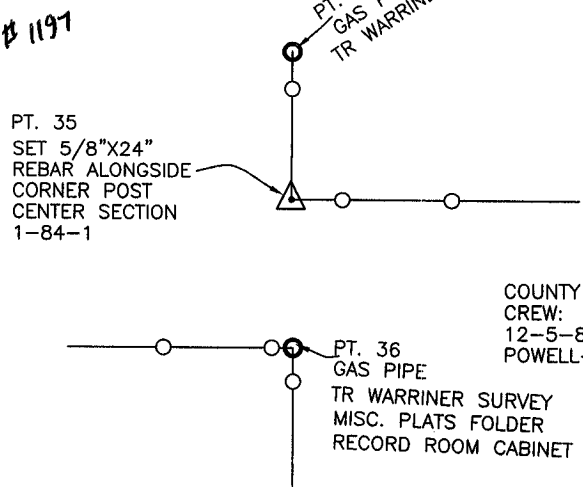
CORNER SECTION TOWNSHIP RANGE  
CENTER 1 84N 1W

OFFICE FILE NO.

84101m\_123003.jpg



NO SCALE



COUNTY SURVEY  
CREW:  
12-5-86  
POWELL-WOOD

PREVIOUSLY RECORDED IN BOOK \_\_\_\_\_, PAGE \_\_\_\_\_  
MONUMENT DESCRIPTION AND HOW ESTABLISHED USED POINT  
36-34 TO RE-ESTABLISH CENTER OF SECTION 1, TOWNSHIP 84 NORTH,  
RANGE 1 WEST OF THE 5TH PRINCIPAL MERIDIAN, JONES COUNTY,  
IOWA PER THE T.R. WARRINER SURVEY, DATED MAY 1915, DISTANCES  
CHECKED GOOD. PROJ. NO. RS-4785(2)

~~I hereby declare that this plat, survey or report was made by me or under my direct personal supervision and that I am a duly registered Land Surveyor under the laws of the State of Iowa.~~

Signed:

SEAL

JONES COUNTY  
ENGINEER'S OFFICE

19501 HWY. 64,  
ANAMOSA, IOWA,  
52205 (319)462-3785

# THIS IS NOT A CERTIFICATION

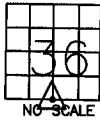
JONES COUNTY ENGINEER'S OFFICE, 19501 HWY. 64, ANAMOSA, IOWA, 52205 (319)462-3785

## UNITED STATES PUBLIC LAND SURVEY CORNER CERTIFICATE

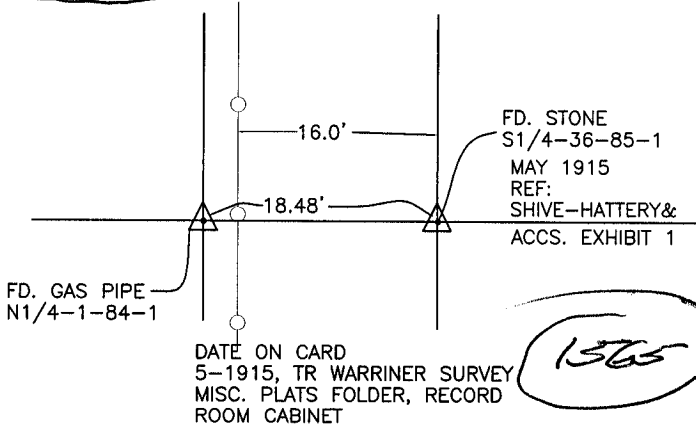
LAND SURVEY MONUMENTS SITUATED IN SECTION 36 TOWNSHIP 85  
NORTH, RANGE 1 WEST OF THE 5TH P.M., JONES COUNTY, IOWA

**CORNERS TO BE INDEXED**

CORNER SECTION TOWNSHIP RANGE  
S-QUARTER 36 85N 1W  
OFFICE FILE NO.



85136w\_110504.tif

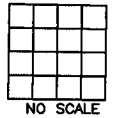


DATE ON CARD  
5-1915, TR WARRINER SURVEY  
MISC. PLATS FOLDER, RECORD  
ROOM CABINET

PREVIOUSLY RECORDED IN BOOK \_\_\_\_\_, PAGE \_\_\_\_\_  
MONUMENT DESCRIPTION AND HOW ESTABLISHED FOUND STONE  
SOUTH QUARTER CORNER SECTION 36, TOWNSHIP 85 NORTH, RANGE 1  
WEST OF THE 5TH PRINCIPAL MERIDIAN, JONES COUNTY, IOWA. THIS  
SKETCH WAS CREATED FROM TIES SHOWN ON THE SMALL INDEX CARDS  
REF: TO SHIVE HATTERY (EXHIBIT 1).

**CORNERS TO BE INDEXED**

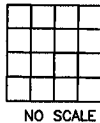
CORNER SECTION TOWNSHIP RANGE  
OFFICE FILE NO. \_\_\_\_\_



PREVIOUSLY RECORDED IN BOOK \_\_\_\_\_, PAGE \_\_\_\_\_  
MONUMENT DESCRIPTION AND HOW ESTABLISHED \_\_\_\_\_

**CORNERS TO BE INDEXED**

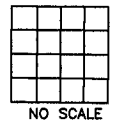
CORNER SECTION TOWNSHIP RANGE  
OFFICE FILE NO.



PREVIOUSLY RECORDED IN BOOK \_\_\_\_\_, PAGE \_\_\_\_\_  
MONUMENT DESCRIPTION AND HOW ESTABLISHED \_\_\_\_\_

**CORNERS TO BE INDEXED**

CORNER SECTION TOWNSHIP RANGE  
OFFICE FILE NO.



PREVIOUSLY RECORDED IN BOOK \_\_\_\_\_, PAGE \_\_\_\_\_  
MONUMENT DESCRIPTION AND HOW ESTABLISHED \_\_\_\_\_

~~I hereby declare that this plat, survey or report was made by me or under my direct personal supervision and that I am a duly registered Land Surveyor under the laws of the State of Iowa.~~

Signed: \_\_\_\_\_

SEAL

JONES COUNTY  
ENGINEER'S OFFICE

19501 HWY. 64,  
ANAMOSA, IOWA,  
52205 (319)462-3785

H